

LTRC

Louisiana Transportation Research Center

2008

Peer Exchange

May 13 – 15, 2008

Today's Discussion

- ◆ Louisiana Transportation Research Center
 - ◆ Research Budget
 - ◆ Research Program Development Process
- 
- A decorative graphic at the bottom right of the slide, consisting of a silhouette of a mountain range in various shades of teal.

Louisiana Transportation Research Center

Mark Morvant P.E.
Associate Director, Research
4101 Gourrier Avenue
Baton Rouge, LA 70808
Ph. 225-767-9124
markmorvant@dotd.la.gov

LTRC Main Office



- Office Space
 - 10,920 sq.ft.
- Laboratory Space
 - 11,760 sq.ft



LTRC

Transportation Training & Education Center

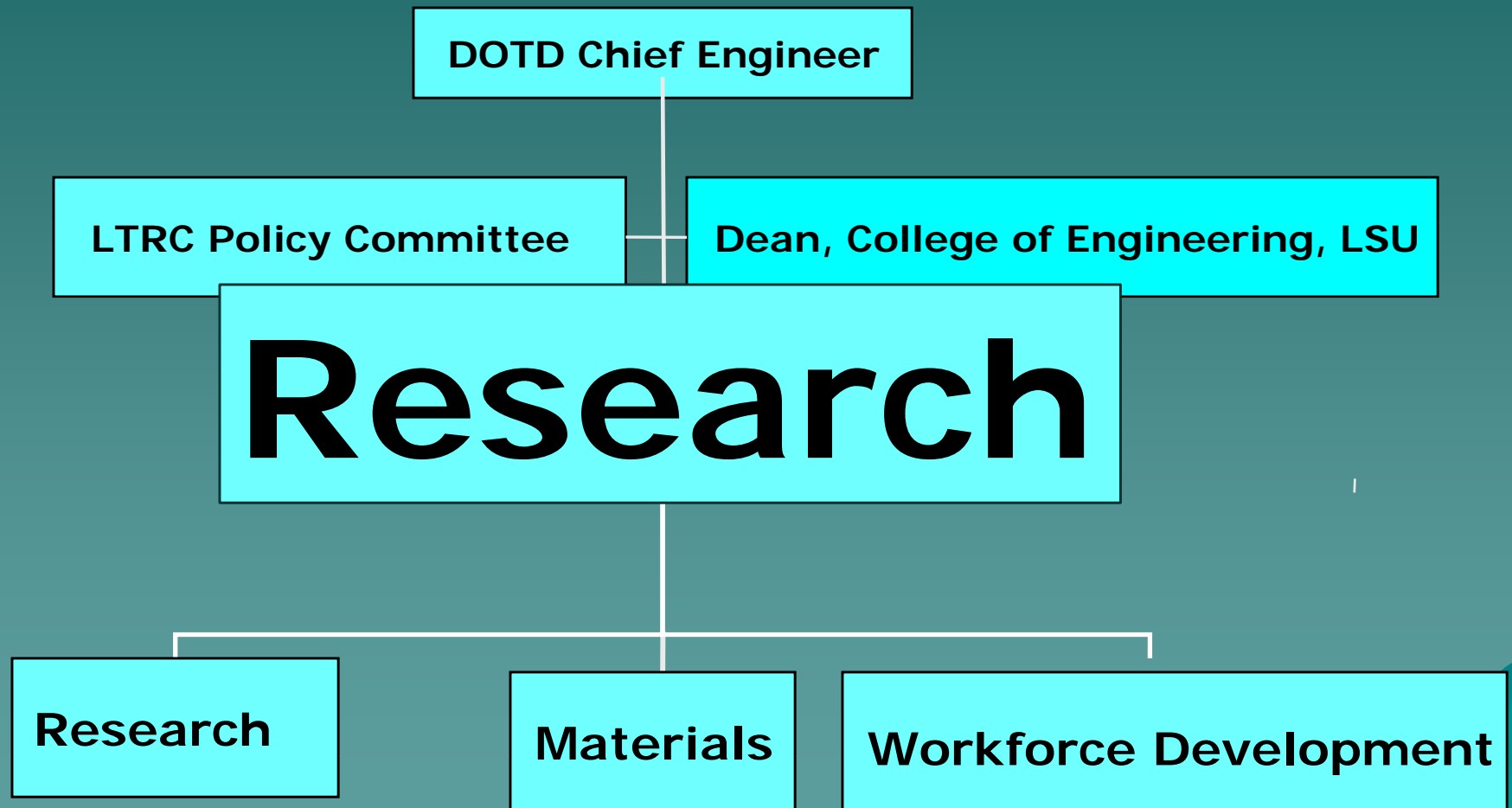


LTRC Pavement Research Facility



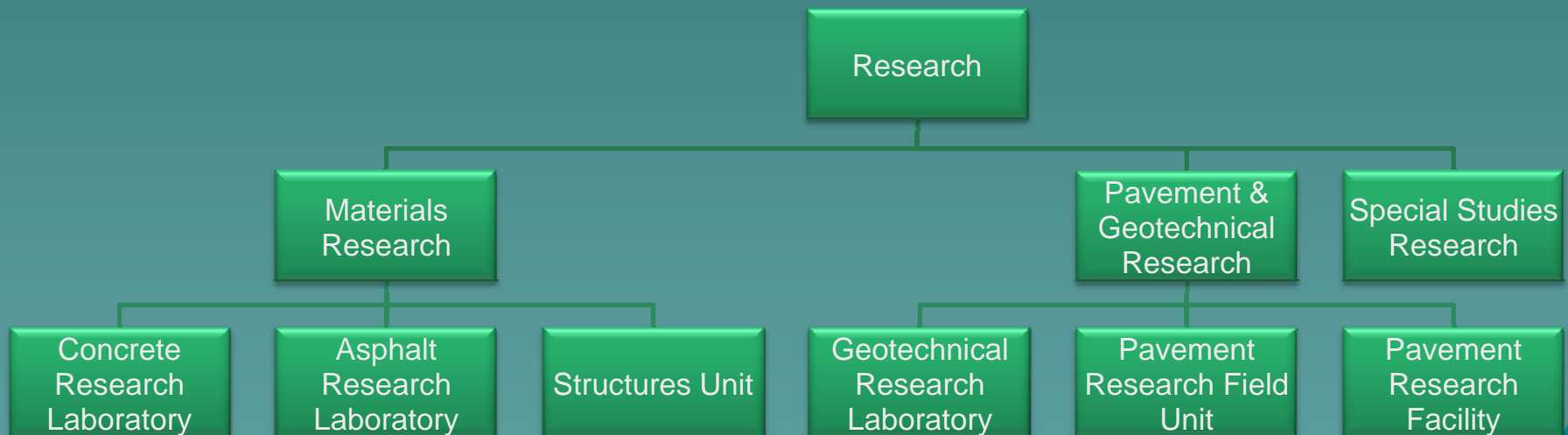
- 20 years of pavement loading can be compressed into months
- Simulates dual tires of single truck axle

LTRC: Reporting Relationships

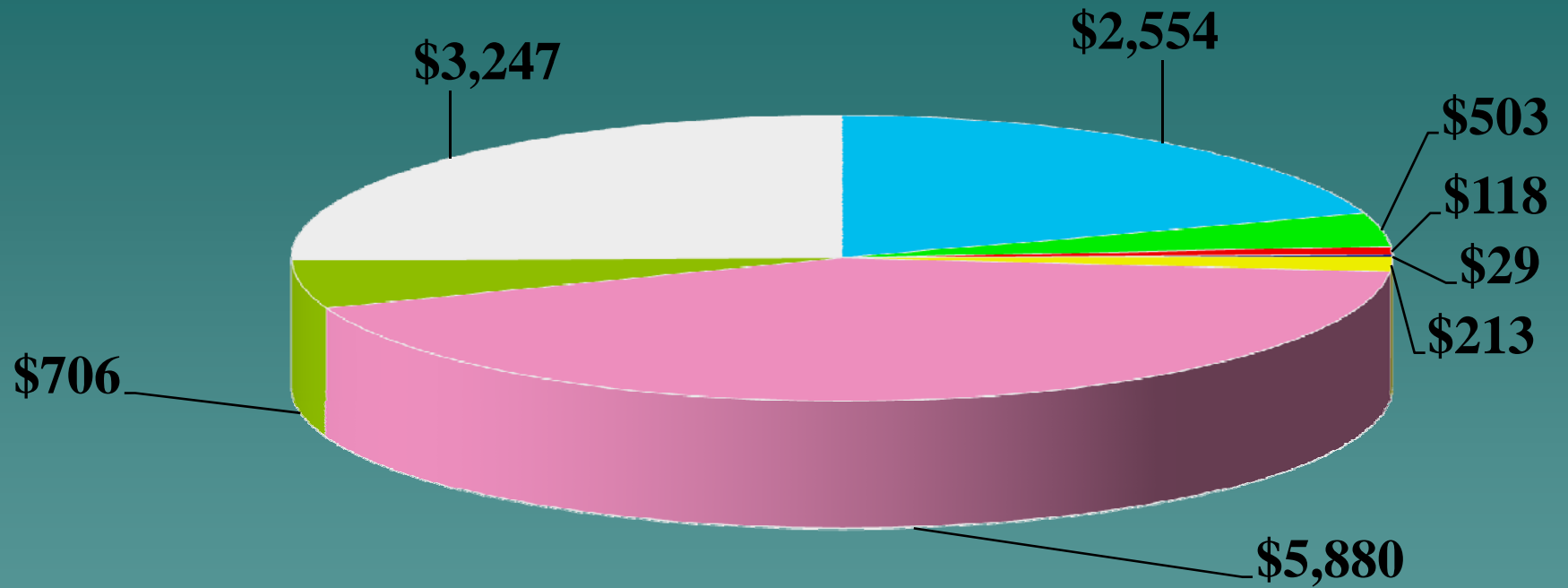


Research Section Organization

- Full-time classified DOTD employees 26
- Faculty and staff of LSU 18
- Total 44



LTRC 07-08 Budget (\$1000's)



- Salaries
- Travel
- Prof. Serv.
- Operating Services
- Equipment
- Training Contract
- Supply
- Research Contract

Total Budget: \$12,870 k

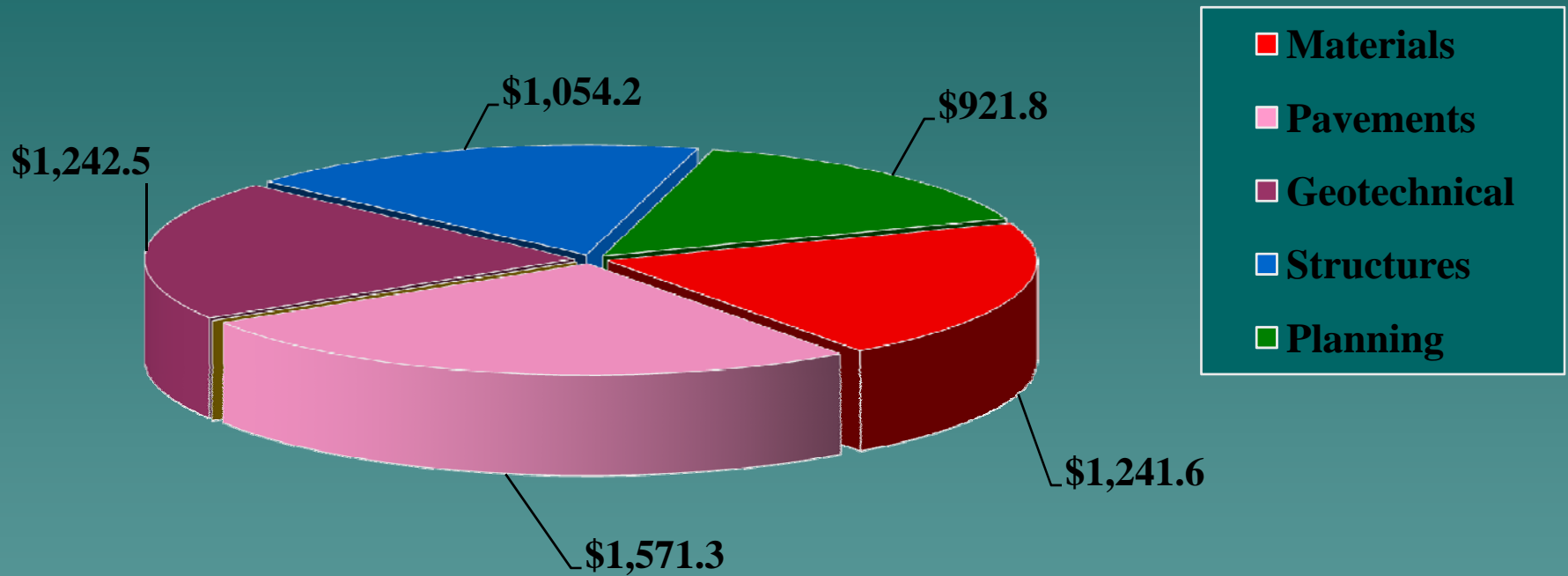
WORK PROGRAM FUNDING

- ◆ Federal SP&R Part II (Internal research program)
- ◆ State funding (External University contracts)
- ◆ Federal (IBRC, Corp of Engineers, etc)
- ◆ Federal STP (Technology Transfer, Workforce Development)
- ◆ Self Generated (NCHRP, Private)
- ◆ Other funding (non LTRC budgeted)

Active Projects

<u>Fiscal Year</u>	<u>04</u>	<u>05</u>	<u>06</u>	<u>07</u>	<u>08</u>
◆ SP&R	19	21	15	18	14
◆ State	20	17	17	8	23
◆ Self-Generated	2	1	2	4	8
◆ Other Funded			2	4	4
◆ Total	41	39	36	34	49

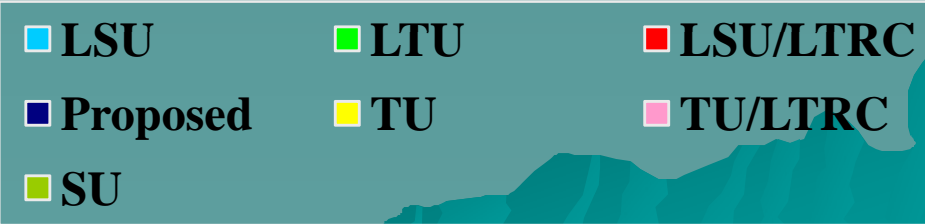
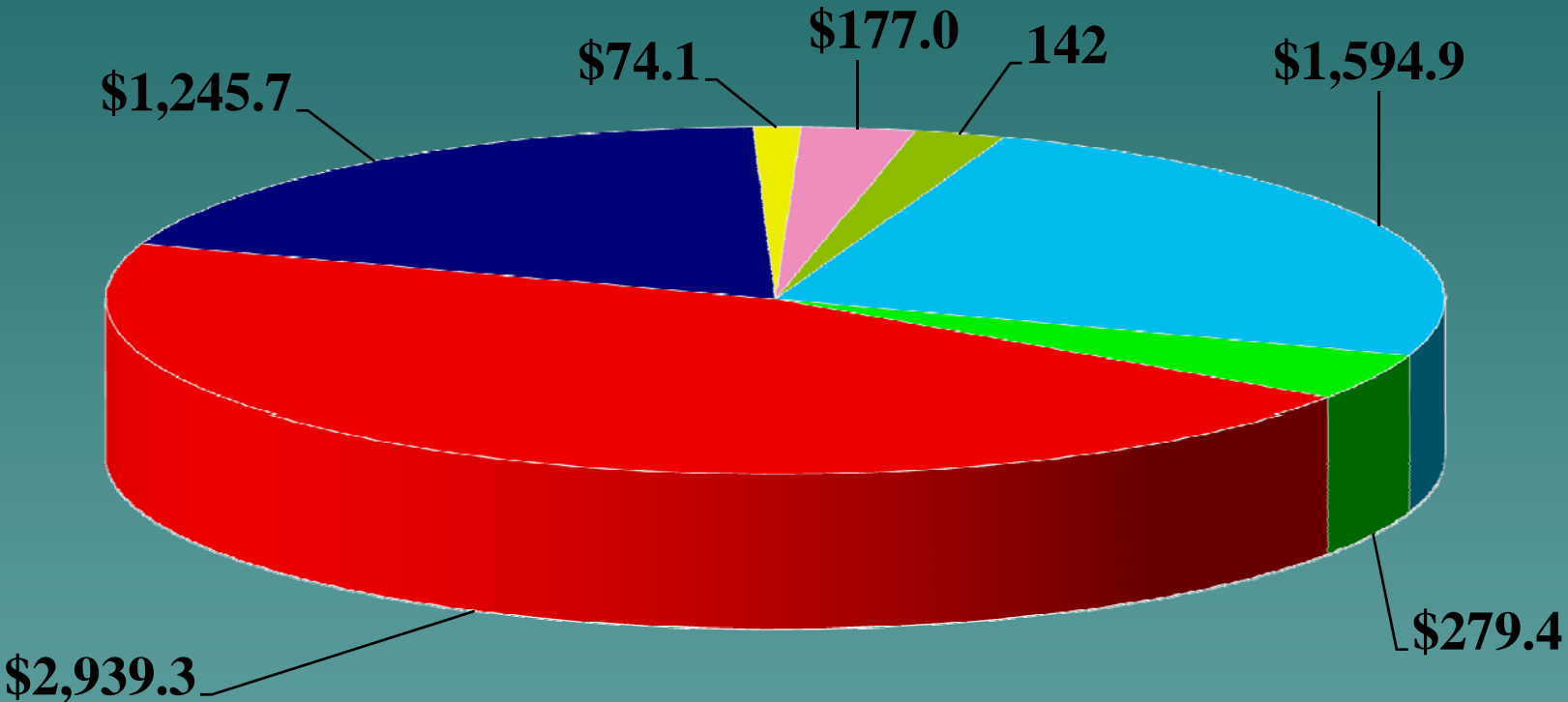
Research by Technical Area (\$1000's)



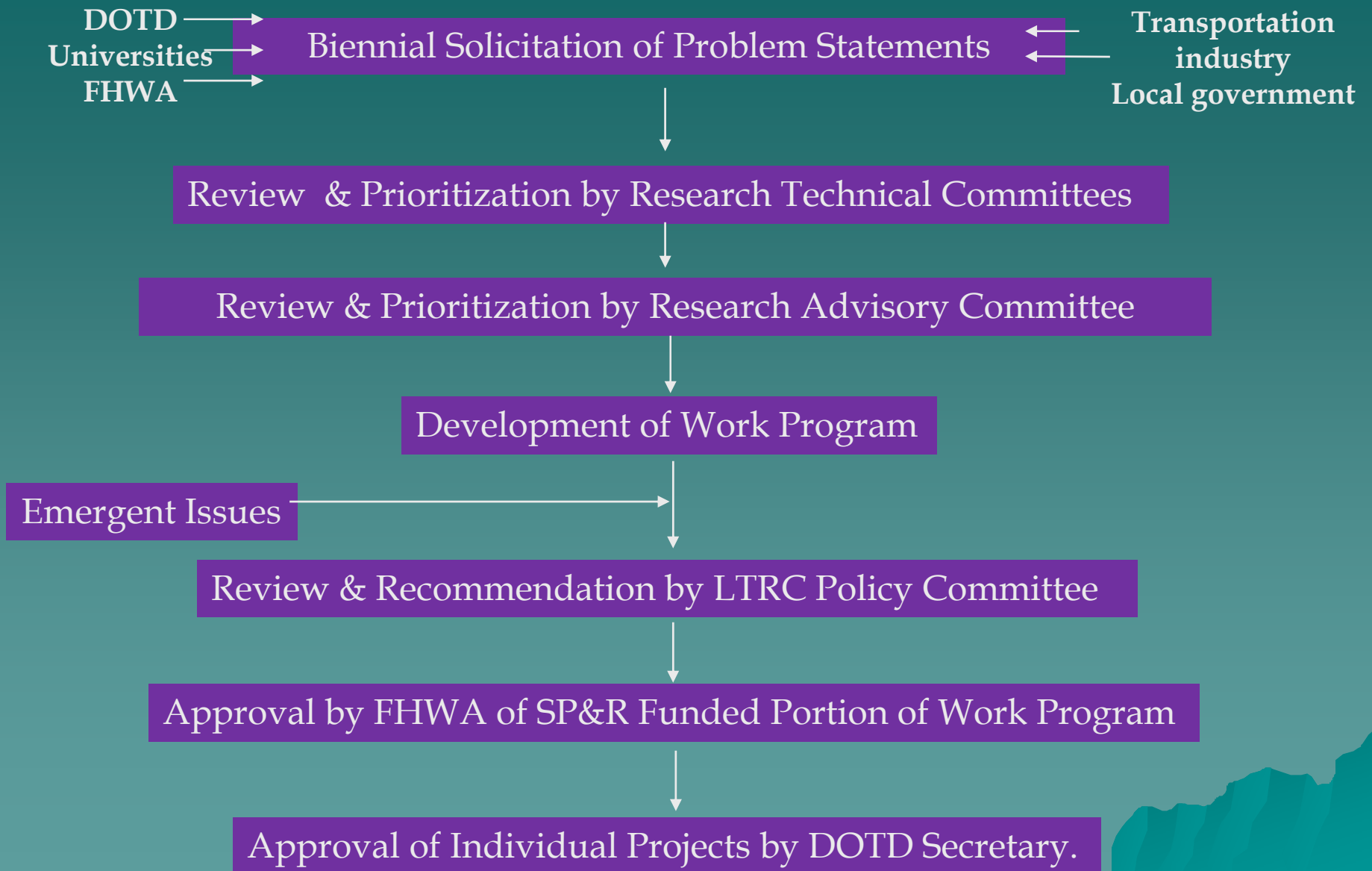
In-house budget:	\$2,312 k
Contract Research Budget:	\$5,880 k
Total Research Budget:	\$8,192 k

Contract Research (\$1000's)

Work Program Total: \$5,880 k



Development / Approval of Research Work Program



Challenges

- ◆ Manpower drain
- ◆ Unscheduled technical assistance work
- ◆ Timely delivery of projects
- ◆ Measuring and Documenting implementation
- ◆ Performance measurements

Questions?

Louisiana Transportation Research Center

www.ltrc.lsu.edu

Mark Morvant P.E.

Associate Director, Research

4101 Gourrier Avenue

Baton Rouge, LA 70808

Ph. 225-767-9124

markmorvant@dotd.la.gov