

ROBERT OVERALL, P.E.

FEBRUARY 20, 2008

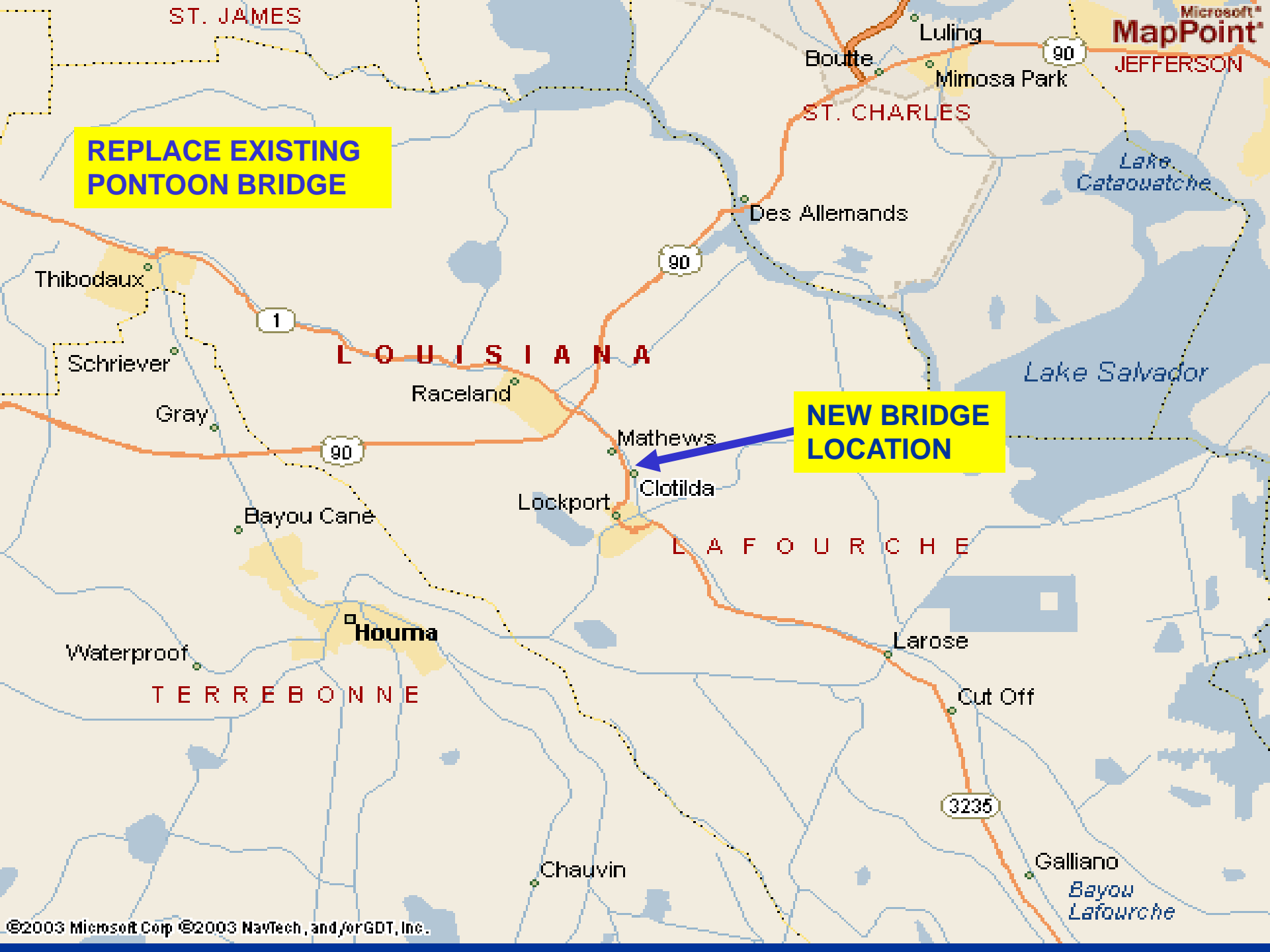
**2008 LTRC Bridge
Structures Conference-
New Orleans**

CONSTRUCTION ISSUES

**BAYOU LAFOURCHE BRIDGE
AT CLOTILDA**

LAFOURCHE PARISH





**REPLACE EXISTING
PONTOON BRIDGE**

**NEW BRIDGE
LOCATION**

LOUISIANA

LAFOURCHE

TERREBONNE

ST. JAMES

ST. CHARLES

Thibodaux

Luling

Boutte

Mimosa Park

90

Lake
Cataouatche

Des Allemands

90

Lake Salvador

Schriever

Gray

Raceland

Mathews

90

Lockport

Clotilda

Bayou Cane

LAFOURCHE

Waterproof

Houma

Larose

Cut Off

3235

Chauvin

Galliano

Bayou
Lafourche

NEW BRIDGE SITE

LA. 1

LA 308

BAYOU
LAFOURCHE





EXISTING PONTOON BRIDGE





STEEL TOWERS - BAYOU LAFOURCHE AT CUTOFF

CONCRETE TOWERS

CLOTILDA

MAIN SPAN = 105 ft.

CLEAR RDWY. = 60 ft.

HORIZ. CLR. = 80 ft.

VERT. CLR. = 47 ft.

LAROSE

122 ft.

80 ft.

80 ft.

73 ft.



CONSTRUCTION ISSUES

- 1. REINFORCEMENT PLACEMENT SPACING IS CRITICAL TO PREVENT VOIDS IN CONCRETE.**
- 2. TOLERANCES ON CONCRETE TOWERS ARE CRITICAL. SPAN AND COUNTERWEIGHT GUIDES HAVE VERY LITTLE PLAY.**
- 3. FINISH DECK GRADE AND ANCHOR BOLT SLEEVE ALIGNMENT ON TOWER DECK IS CRITICAL TO ALLOW PROPER ALIGNMENT**
- 4. MAINTAINING THE DESIGN CONCRETE DECK THICKNESS IS IMPORTANT FOR SPAN BALANCING AND MECH./ELEC. SYSTEMS. BEAM DEFLECTION HAS TO BE MONITORED DURING MAIN SPAN POUR.**











1/7/00 11:58am

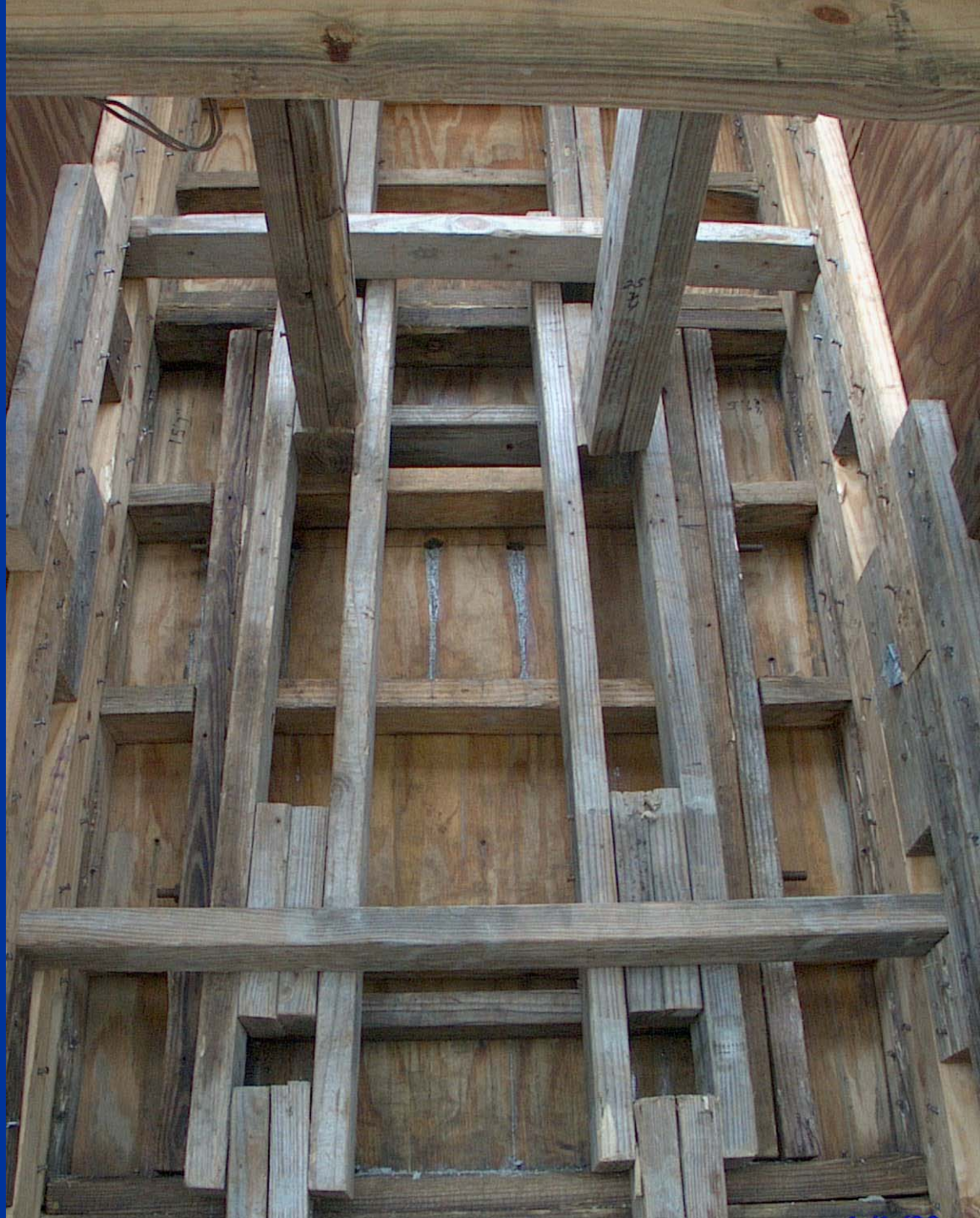


1/7/00 12:35pm



1/1/00









APR 3 2002



AMERICAN

ROAD
CLOSED

3/15/00



3/15/00



3/15/00























EARLE







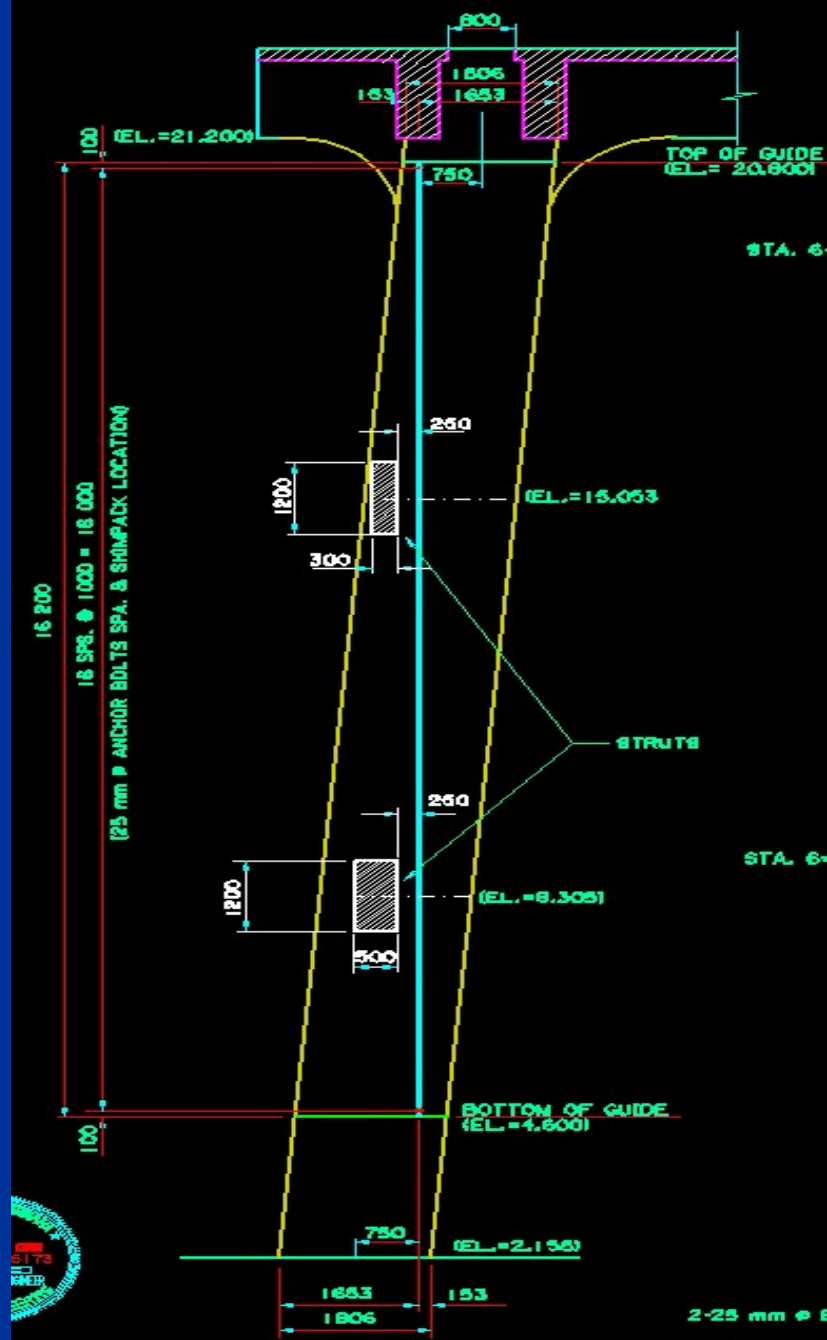
GROVE











SECTION B-B

(SHOWING LOCATION OF COUNTERWEIGHT ROLLER GUIDE ON COLUMN)

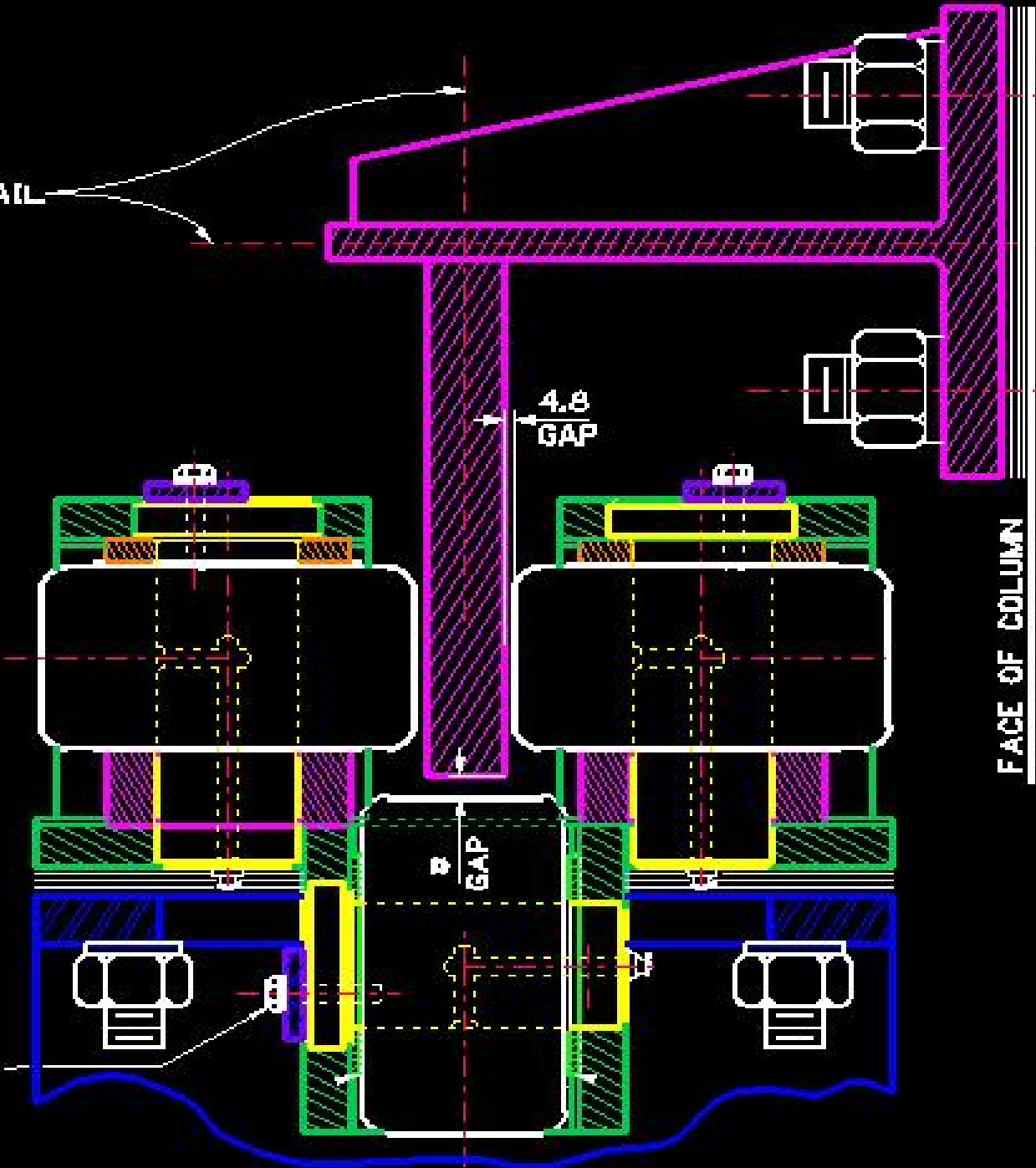
2-25 mm @ 8

STRUTS



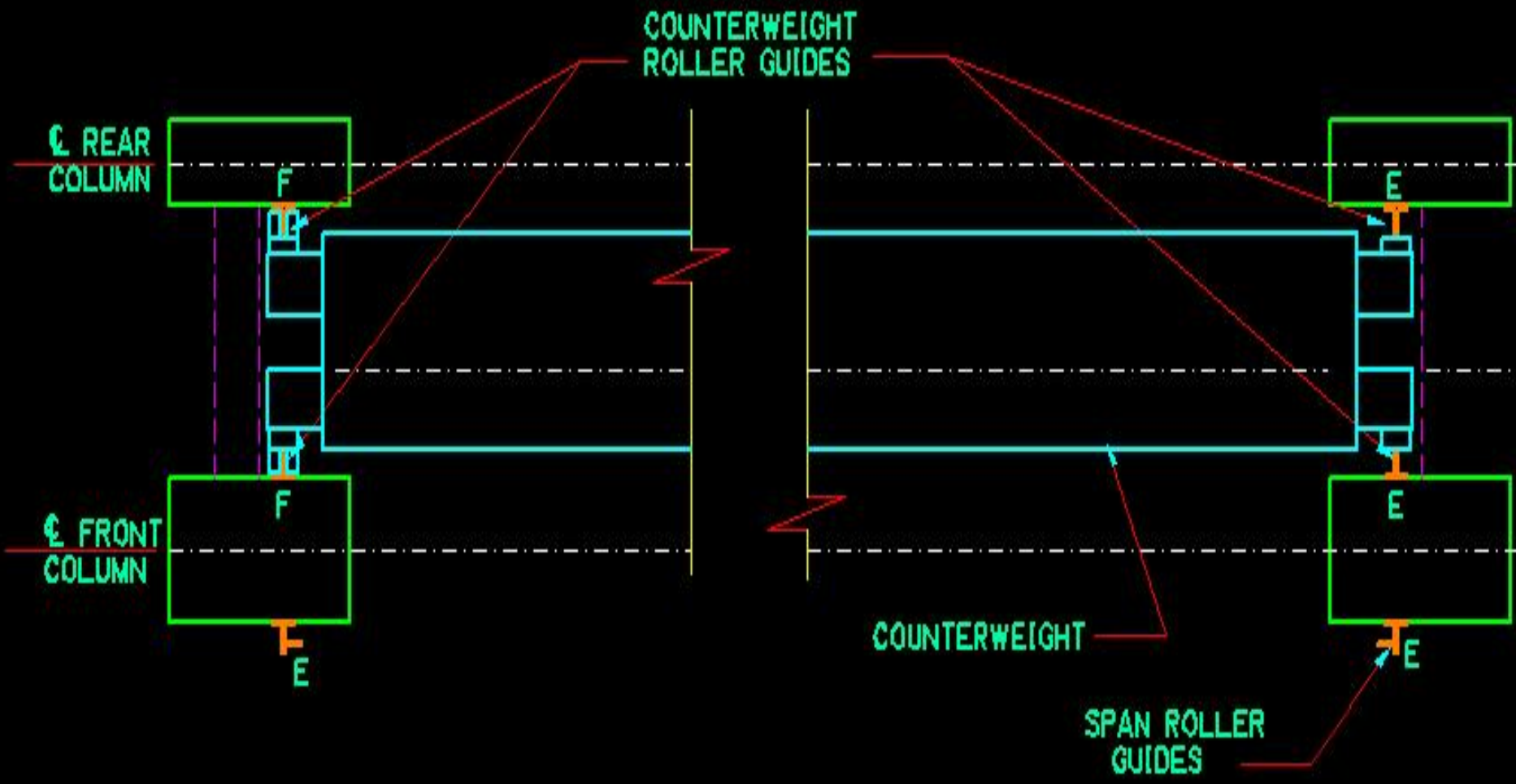
1/7/00 12:35pm

⊗ GUIDE RAIL



⊗ GUIDE RAIL

FACE OF COLUMN













BEGIN CONSTRUCTION: NOVEMBER, 2000

BRIDGE CONSTRUCTION COST: \$6.5 M

ROADWAY CONSTRUCTION COST: \$2.4 M

TOTAL CONST. COST: \$8.9 M

DOTD BRIDGE DESIGN TEAM

PROJECT MANAGER AND LEAD

STRUCTURAL ENGINEER: TRINH LE, P.E.

MECHANICAL: LEE HUPPERICH, P.E.

ELECTRICAL: CHRIS LEBOURGEOIS, P.E.

STRUCTURAL DETAILER: GARLAND GRASS



CONSTRUCTION PROJECT TEAM

CONSTRUCTION MANGEMENT:

DOTD DISTRICT 02

GENERAL CONTRACTOR:

COASTAL BRIDGE CO.

STEEL FABRICATOR:

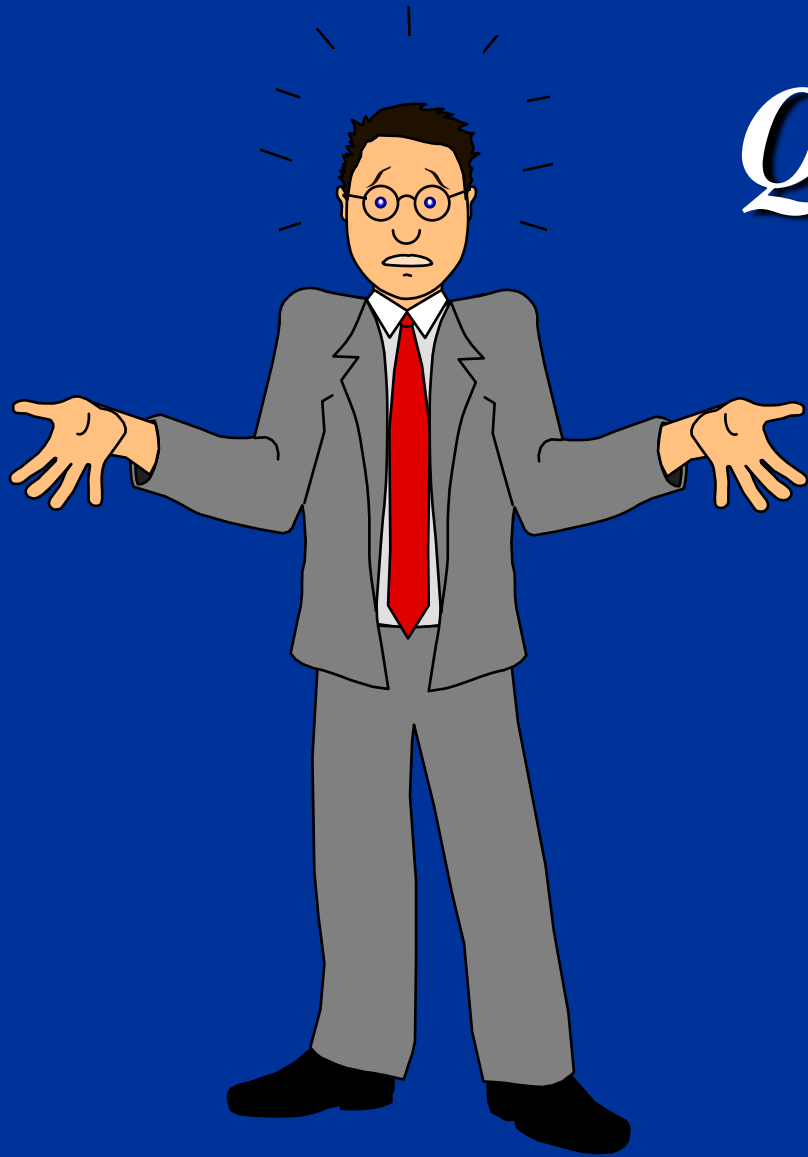
ORLEANS MATERIAL

MECHANICAL SYSTEMS:

HARDIE TYNES

ELECTRICAL SYSTEMS:

GENERAL ENGINEERING



QUESTIONS?