

Overview of Louisiana Transportation Research Center

Presented to

LTRC Peer Exchange Team

May 2008

LTRC

**Created by
R.S. 48:105
in 1986**

Cooperative research, technology transfer
and training center jointly administered
by
LADOTD and LSU

LTRC's Mission

Effectively merge the resources of DOTD/LTRC and universities to provide transportation related research, education and training in a manner that:

- Addresses DOTD problems/needs
- Addresses transportation industry problems/needs
- Supports local government
- Advances transportation technology
- Benefits Louisiana's universities
- Provides optimal return on taxpayers' dollars

Functions and Duties of LTRC

- To develop & conduct a nationally recognized research program in transportation systems
- **To offer educational & training programs**
- To develop & implement a technology transfer program
- **To establish cooperative relationships with universities, associations & agencies**
- To report & publish research findings

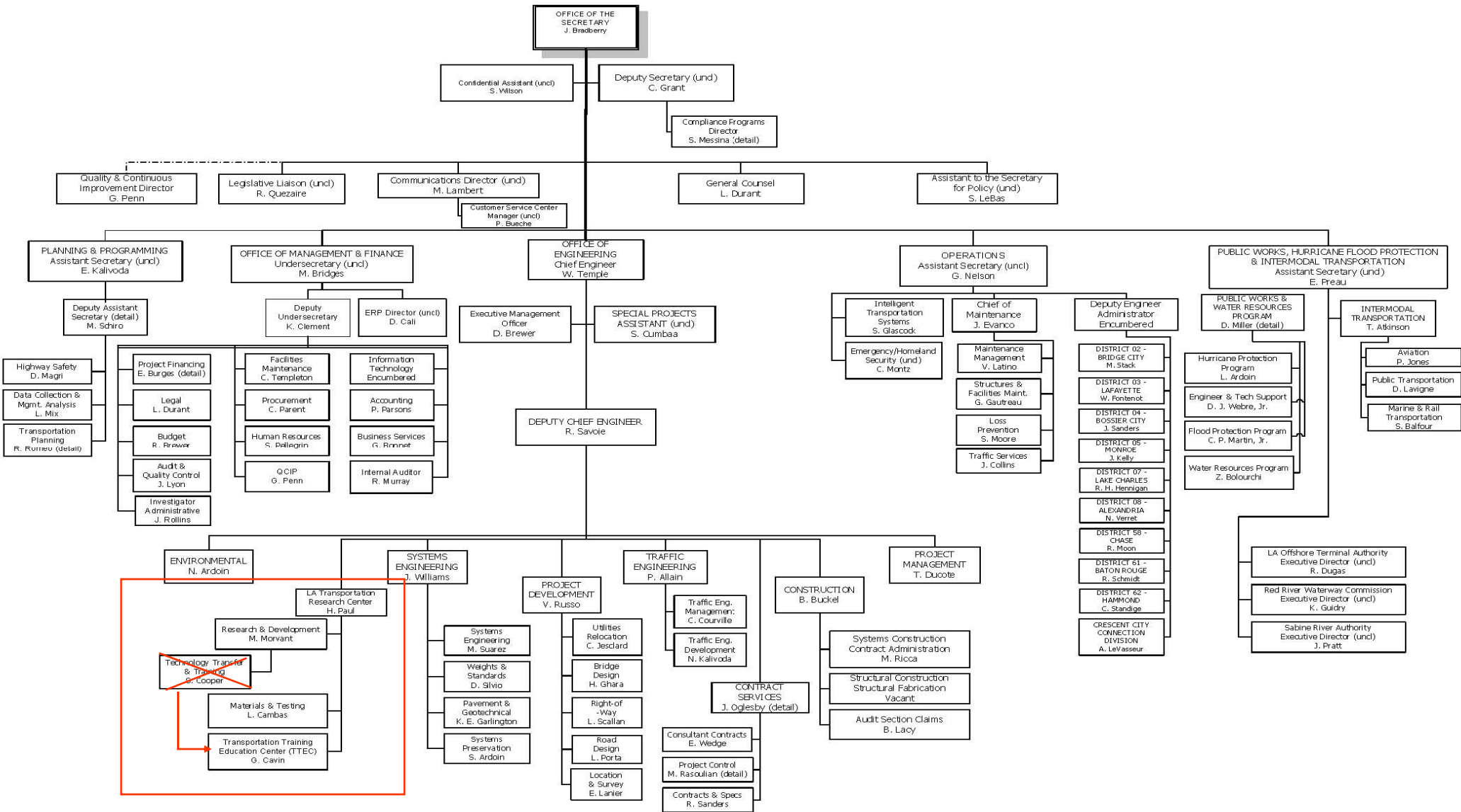
Policy Committee

Advises LTRC and makes recommendations concerning research and technology transfer programs, fiscal-year budgets, and reviews activities and progress of the center.

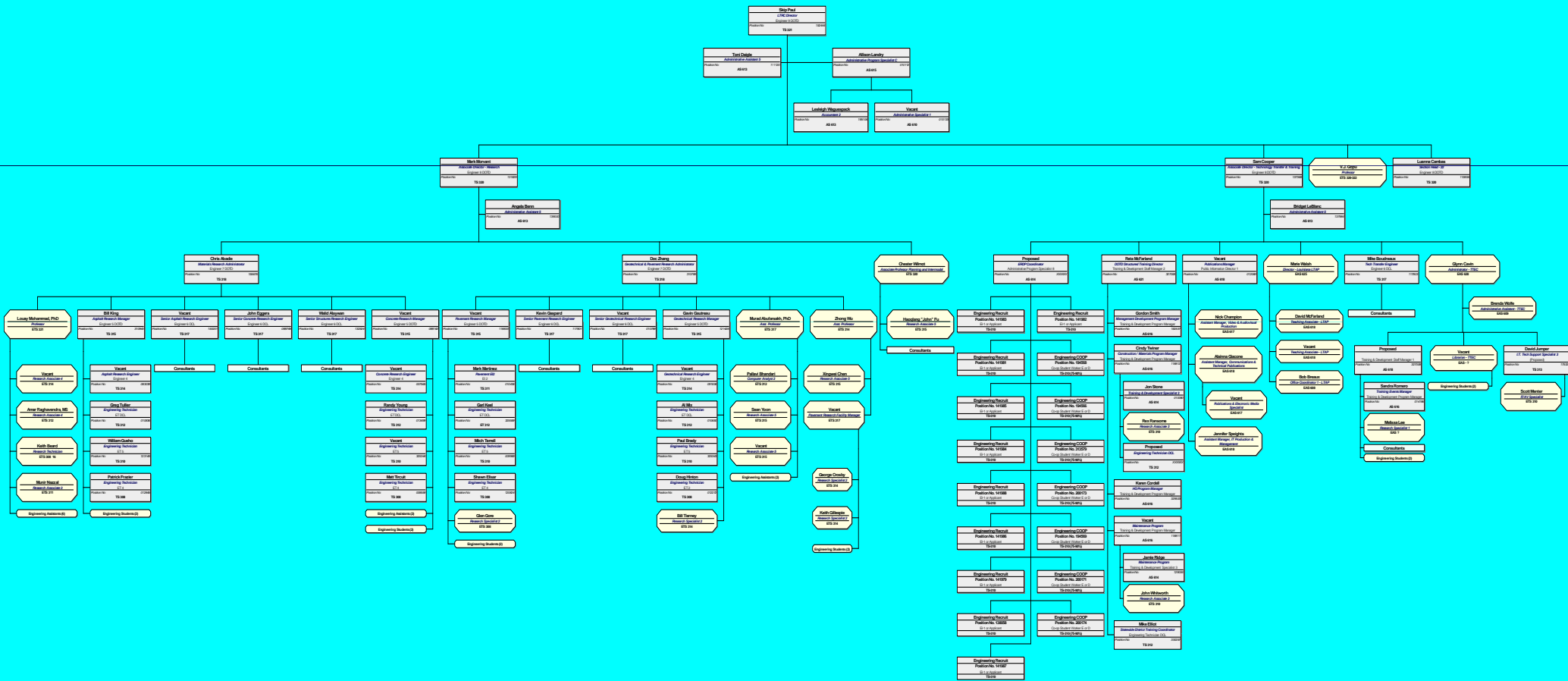
LTRC Policy Committee

- **DOTD - secretary appoints 3 members**
- **Universities - one member from each with civil department**
 - LSU
 - USL
 - Southern
 - LTU
 - UNO
 - Tulane
 - McNeese
- **LTRC director**
- **FHWA - invited observers**

LOUISIANA DEPARTMENT OF TRANSPORTATION & DEVELOPMENT



LTRC Organization Chart

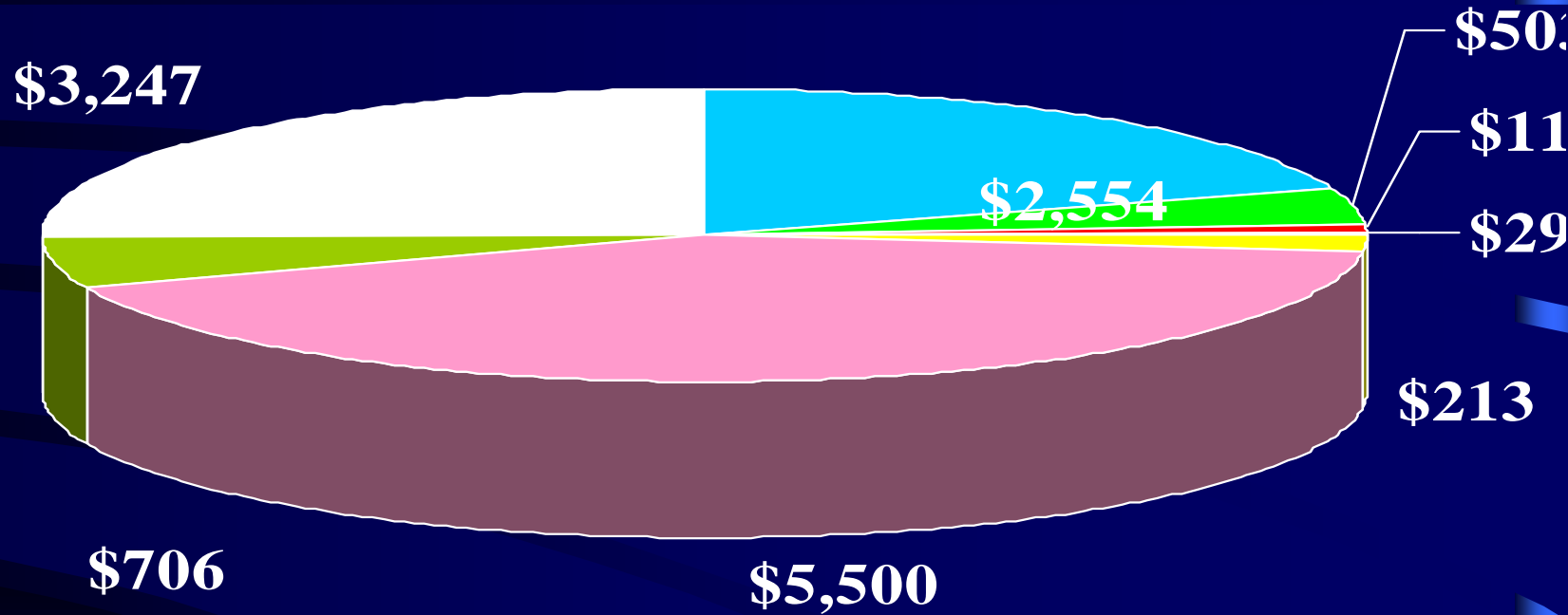


LTRC Staff

	Director	R & D	Training	Total
■ DOTD Personnel	2	27	15	44
■ LSU Personnel	1	18	12	31
TOTAL	3	45	27	75

- Full-time classified employees of department
- Faculty and staff of university
- Graduate and undergraduate students not shown

LTRC 07-08 Budget (\$1000's)



- | | | |
|-------------|--------------------|-------------------|
| Salaries | Operating Services | Supply |
| Travel | Equipment | Research Contract |
| Prof. Serv. | Training Contract | |

Total Budget: \$12,870 k

WORK PROGRAM FUNDING

- Federal SP&R Part II (Internal research program)
- State funding (External University contracts)
- Federal (IBRC, Corp of Engineers, etc)
- Federal STP (Technology Transfer, Workforce Development)
- Self Generated (NCHRP, Private)
- Other funding (non LTRC budgeted)

LTRC Support for Higher Education

- Research opportunities for faculty
- Theses, dissertations for grad students
- Education/training opportunities for faculty
- Student worker program (LSU)
- Co-op program (7 universities)
- Senior CE project support program
- Teaching by LTRC research & adjunct professors
- TIRE Program

LTRC Training / Education Role

- **Engineering continuing education**
 - *PDH requirements by board of registration*
 - *Transportation related topics*
 - *Conferences, seminars, workshops*
- **Job skills training for technicians**
 - *Construction*
 - *Design*
 - *Maintenance*
- **Management / professional development programs**
 - *CPTP*
 - *Management topics*
 - *Construction project management*
 - *TQM*
 - *Strategic planning*

LTRC Training and Education Role

■ Major customers

- *4800 DOTD personnel*
- *Consultants*
- *Contractors*
- *Local government personnel*

■ Major resources

- *LTRC tech transfer/training staff*
- *Technology transfer center*
- *National highway institute*
- *Universities*
- *Consultants*
- *LTRC research staff*

Technology Transfer Center (LTAP)

- One of 51 T² centers in USA
- Cooperative effort of DOTD, FHWA, and LSU
- Goal is to help improve local transportation agencies by providing:
 - Training
 - Technical materials
 - Assistance and information

LTRC Foundation, Inc.

Connecting Government, Industry, and Academia

Louisiana Transportation Research Center

What Is the LTRC Foundation?

- The Foundation is a nonprofit corporation formed to enhance and support LTRC
- LTRC is committed to establishing cooperation in the transportation community to improve transportation systems in Louisiana
- The Foundation represents a unique opportunity for government, industry, and academia to work together

Functions of the Foundation

- Can solicit and accept donations of funds and equipment to enhance and support LTRC
- Permits LTRC to partner with other transportation interests / customers in providing services
- Permits LTRC to purchase liability insurance necessary to receive research grants

Board of Directors

- **LTRC** - *Director, Assoc. Director for Research and Assoc. Director for Technology Transfer*
- **DOTD** - *Deputy Secretary, Chief Engineer, Assistant Secretary, Planning & Programming*
- **ACADEMIA** - *Civil Engineering Dept. Heads representing LSU, LTU, UNO, USL, Tulane, Southern and McNeese*
- **INDUSTRY** - *6 positions to be named*

What Are the Goals of the Foundation?

- Constructing an education and training facility for the transportation community
- Enhancing the research/equipment capabilities of LTRC
- Endowing LTRC research professorships