



2015 Specifications Materials Sampling Manual Section 502 – Asphalt Binder

Responsibilities of:

Contractor

Asphalt District Inspector

District Lab

November 20, 2015, TTEC

Jason Davis, P.E.

Field Quality Assurance Administrator



LOUISIANA DEPARTMENT OF
TRANSPORTATION & DEVELOPMENT

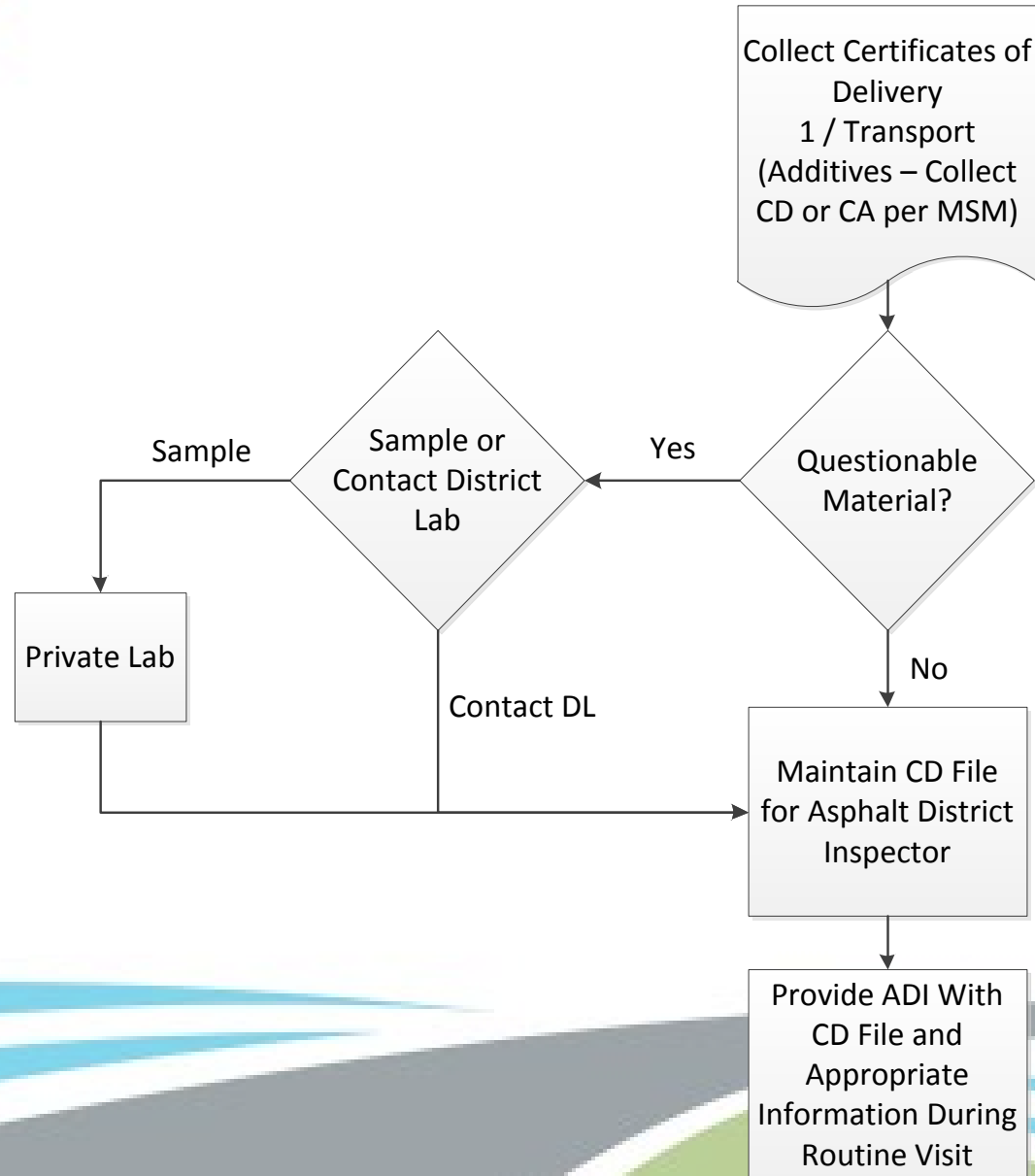
Refinery-Supplied Material

Asphalt Cement	Prelim. Source Approval	Refinery S 201	Mat. Lab	1/supplier tank	1 qt friction top can	CA	7	----	5 days	(AML) Non Self Certified. Must have tank approved by Mat. Lab prior to shipping whenever asphalt cement is added or modified. DOTD results use for approval.
	Prelim. Source Approval	Refinery S 201	Refinery	1/supplier tank or as directed by the Mat. Lab	1 qt friction top can	CA	7	----	2 hrs during working hours	(AML) Self Certified. Supplier, shall sample and test each tank in accordance with quality control plan whenever asphalt cement is added or modified, and supply CA to Mat. Lab along with 1 qt sample for verification testing, or as directed by the Mat. Lab. Supplier results used for approval.
	Quality Control	Contractor	Contractor / Mat. Lab.	1 / Transport	1 qt. friction top can				----	(AML) Contractor collects CD for each transport to maintain log of material received and provides to inspector during monthly visit. Contractor to sample if questionable and send sample to private lab or Materials Lab.
	Monitor	Dist. Lab	Dist. Lab	Sum of Transport quantities/ source / JMF / month		CD 8 & 9				(AML) Inspector collects CDs from contractor during monthly visit. Quantity for each JMF entered into SiteManager as a single Monitor sample per month for each source.
	Monitor	Dist. Lab S 201	Mat. Lab	1/plant working tank and transport /grade / visit *	2 - 1 qt friction top cans	----	----	----		Identify samples and send to Materials Lab for system monitoring (not part of project verification). Sample transport also if available during plant visit *Minimum 1 visit / month. Sample for project verification if questionable.
	Monitor	Dist. Lab S 201	Mat. Lab	1 roadway core / JMF / project *	6 in. core	----	----	----		*Send one core per JMF from 1st lot roadway acceptance or verification cores from District Lab to Materials Lab for liquid monitoring using GPC analysis (not part of project verification).

Refinery-Supplied Material

Asphalt Cement	Prelim. Source Approval	Refinery S 201	Mat. Lab	1/supplier tank	1 qt friction top can	CA	7	----	5 days	(AML) Non Self Certified. Must have tank approved by Mat. Lab prior to shipping whenever asphalt cement is added or modified. DOTD results use for approval.
	Prelim. Source Approval	Refinery S 201	Refinery	1/supplier tank or as directed by the Mat. Lab	1 qt friction top can	CA	7	----	2 hrs during working hours	(AML) Self Certified. Supplier, shall sample and test each tank in accordance with quality control plan whenever asphalt cement is added or modified, and supply CA to Mat. Lab along with 1 qt sample for verification testing, or as directed by the Mat. Lab. Supplier results used for approval.
	Quality Control	Contractor	Contractor / Mat. Lab.	1 / Transport	1 qt. friction top can				----	(AML) Contractor collects CD for each transport to maintain log of material received and provides to inspector during monthly visit. Contractor to sample if questionable and send sample to private lab or Materials Lab.
	Monitor	Dist. Lab	Dist. Lab	Sum of Transport quantities/ source / JMF / month		CD 8 & 9				(AML) Inspector collects CDs from contractor during monthly visit. Quantity for each JMF entered into SiteManager as a single Monitor sample per month for each source.
	Monitor	Dist. Lab S 201	Mat. Lab	1/plant working tank and transport /grade / visit *	2 - 1 qt friction top cans	----	----	----		Identify samples and send to Materials Lab for system monitoring (not part of project verification). Sample transport also if available during plant visit *Minimum 1 visit / month. Sample for project verification if questionable.
	Monitor	Dist. Lab S 201	Mat. Lab	1 roadway core / JMF / project *	6 in. core	----	----	----		*Send one core per JMF from 1st lot roadway acceptance or verification cores from District Lab to Materials Lab for liquid monitoring using GPC analysis (not part of project verification).

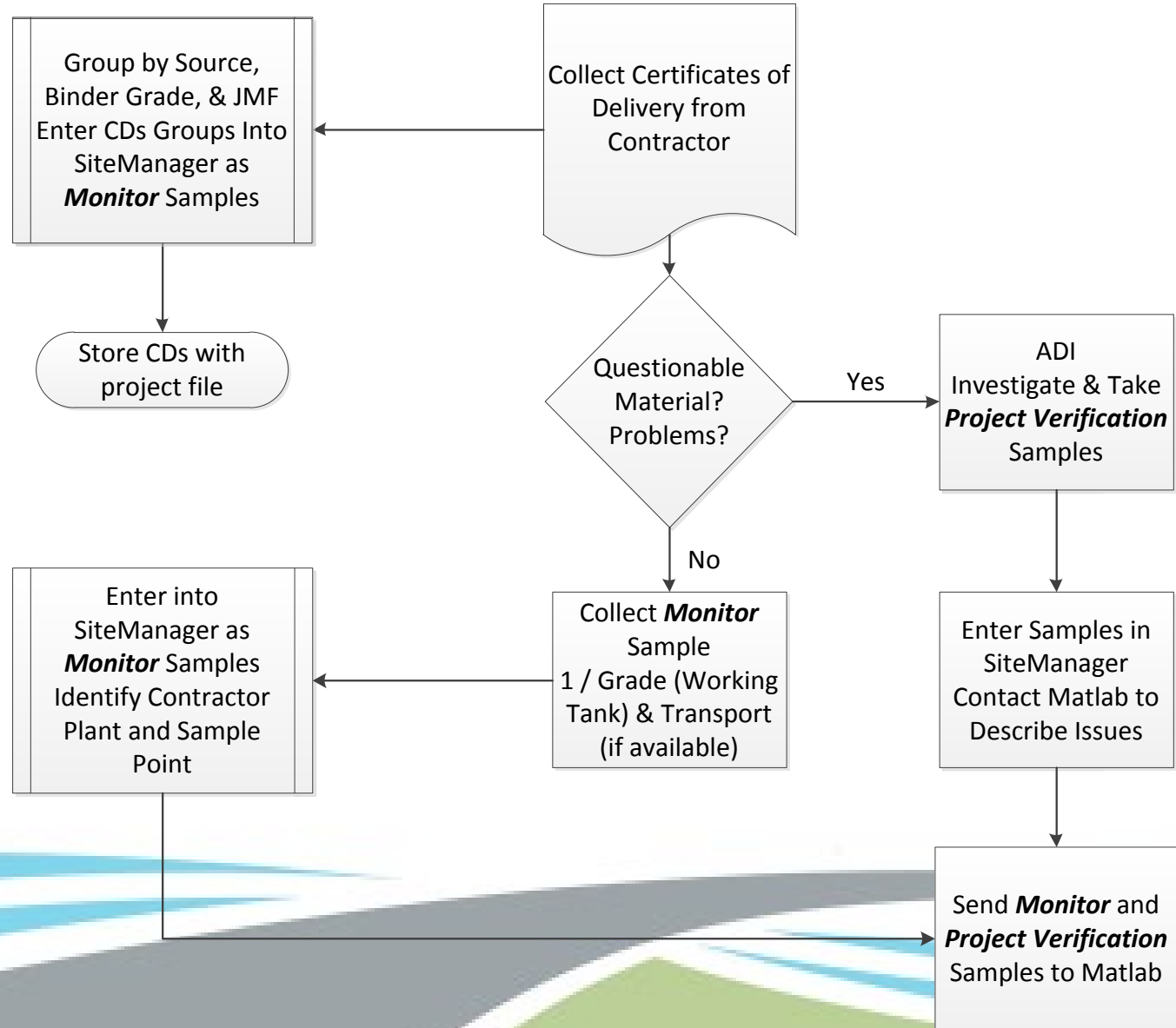
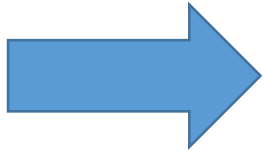
Contractor Responsibilities for Asphalt Binder



Refinery-Supplied Material

Asphalt Cement	Prelim. Source Approval	Refinery S 201	Mat. Lab	1/supplier tank	1 qt friction top can	CA	7	----	5 days	(AML) Non Self Certified. Must have tank approved by Mat. Lab prior to shipping whenever asphalt cement is added or modified. DOTD results use for approval.
	Prelim. Source Approval	Refinery S 201	Refinery	1/supplier tank or as directed by the Mat. Lab	1 qt friction top can	CA	7	----	2 hrs during working hours	(AML) Self Certified. Supplier, shall sample and test each tank in accordance with quality control plan whenever asphalt cement is added or modified, and supply CA to Mat. Lab along with 1 qt sample for verification testing, or as directed by the Mat. Lab. Supplier results used for approval.
	Quality Control	Contractor	Contractor / Mat. Lab.	1 / Transport	1 qt. friction top can				----	(AML) Contractor collects CD for each transport to maintain log of material received and provides to inspector during monthly visit. Contractor to sample if questionable and send sample to private lab or Materials Lab.
	Monitor	Dist. Lab	Dist. Lab	Sum of Transport quantities/ source / JMF / month		CD 8 & 9				(AML) Inspector collects CDs from contractor during monthly visit. Quantity for each JMF entered into SiteManager as a single Monitor sample per month for each source.
	Monitor	Dist. Lab S 201	Mat. Lab	1/plant working tank and transport /grade / visit *	2 - 1 qt friction top cans	----	----	----		Identify samples and send to Materials Lab for system monitoring (not part of project verification). Sample transport also if available during plant visit *Minimum 1 visit / month. Sample for project verification if questionable.
	Monitor	Dist. Lab S 201	Mat. Lab	1 roadway core / JMF / project *	6 in. core	----	----	----		*Send one core per JMF from 1st lot roadway acceptance or verification cores from District Lab to Materials Lab for liquid monitoring using GPC analysis (not part of project verification).

Asphalt District Inspector Responsibilities Minimum 1/Month Visit



Basic Sample Data

Addtl Sample Data

Contract

Other

Tests

Smpl ID: d222615B2144829

Status: Pending

Revised By:

Revising:

Sample Date: 11/02/15

Link To:

Link From:

Date Entered: 11/02/15

Smpl Type: Monitor

Acpt Meth: Test Results

Material: 1002M00050

Binder PG 76-22m

Sampler:

P/S: Marathon Petroleum Company - Garyville, LA

APS00000400

Type: Approved Manufacturer

City: Garyville

Prod Nm: Binder PG 76-22m Marathon - Garyville

Mnfctr: Marathon Petroleum Company - Garyville, LA

APS00000400

Town: JMF 1234567890123

Geog Area: N/A

Intd Use: 10 CDs collected from Barriere, Boutte

Repr Qty: 30,000.000 Gallon

Lab Control Number: CNd222615B2144829

Auth By:

Auth Date: 00/00/00

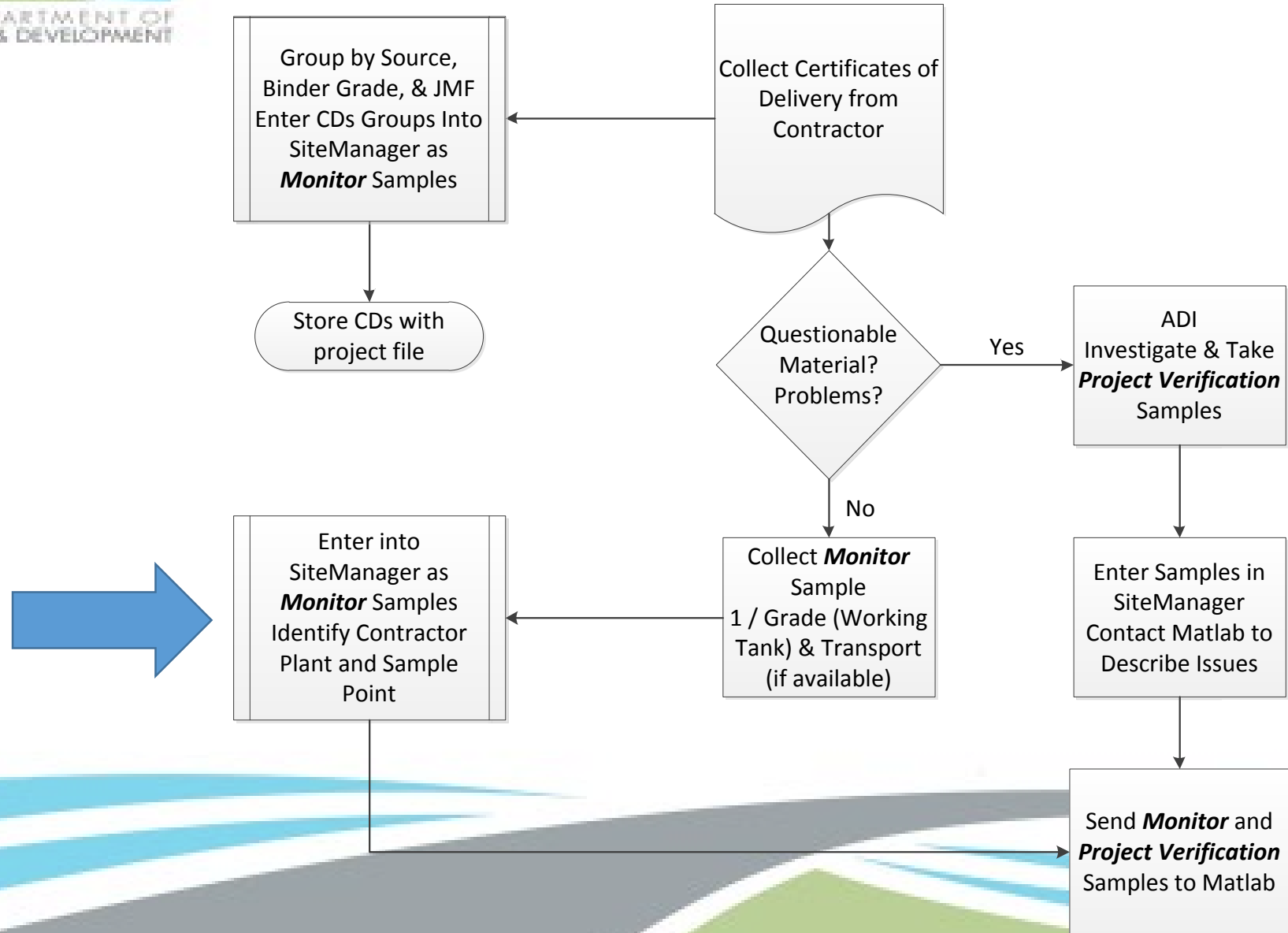
Lab Reference Number:

Lock Type: No Lock

Locked By:

Lock Date:

Asphalt District Inspector Responsibilities Minimum 1/Month Visit



Basic Sample Data

Addtl Sample Data

Contract

Other

Smpl ID: d222615B2150152

Status: Pending

Revised By:

Revising:

Sample Date: 11/02/15

Link To:

Link From:

Date Entered: 11/02/15

Smpl Type: Monitor

Acpt Meth: Test Results

Material: 1002M00050

Binder PG 76-22m

Sampler:

P/S: Marathon Petroleum Company - Garyville, LA

APS00000400

Type: Approved Manufacturer

City: Garyville

Prod Nm:

Mnfctr:

Town:

Geog Area: N/A

Intd Use: Monitor - Barriere, Boutte - Work tank

Repr Qty: 1.000 Gallon

Lab Control Number: CNd222615B2150152

Auth By:

Auth Date: 00/00/00

Lab Reference Number:

Lock Type: No Lock

Locked By:

Lock Date:

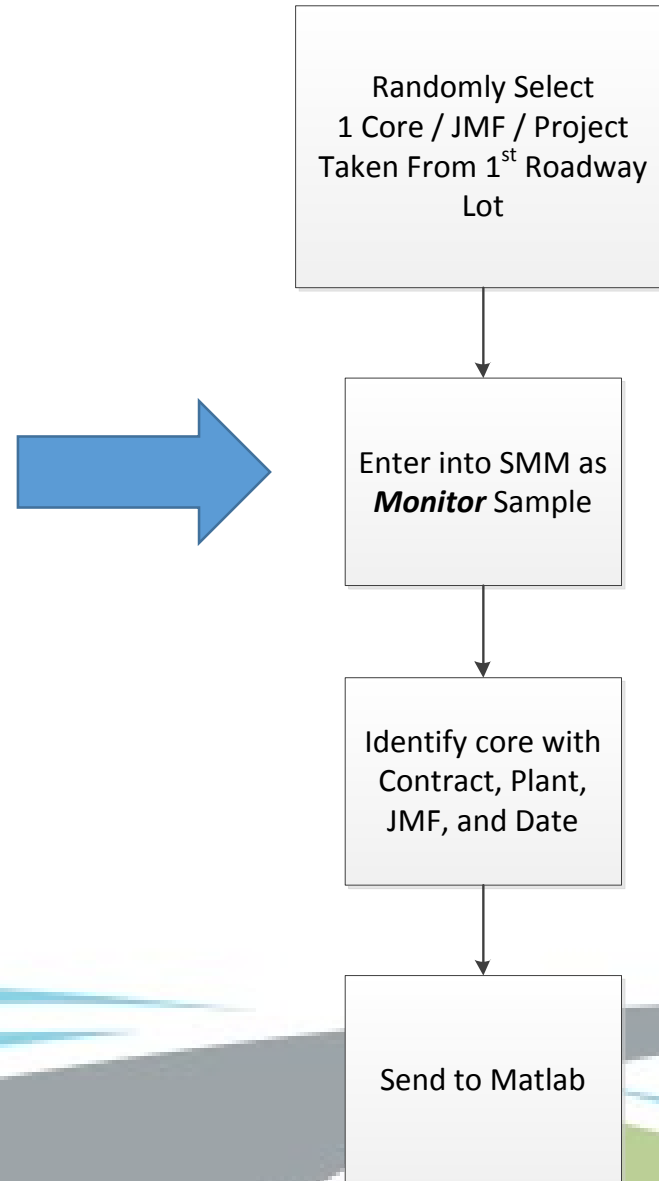


LOUISIANA DEPARTMENT OF
TRANSPORTATION & DEVELOPMENT

Refinery-Supplied Material

Asphalt Cement	Prelim. Source Approval	Refinery S 201	Mat. Lab	1/supplier tank	1 qt friction top can	CA	7	----	5 days	(AML) Non Self Certified. Must have tank approved by Mat. Lab prior to shipping whenever asphalt cement is added or modified. DOTD results use for approval.
	Prelim. Source Approval	Refinery S 201	Refinery	1/supplier tank or as directed by the Mat. Lab	1 qt friction top can	CA	7	----	2 hrs during working hours	(AML) Self Certified. Supplier, shall sample and test each tank in accordance with quality control plan whenever asphalt cement is added or modified, and supply CA to Mat. Lab along with 1 qt sample for verification testing, or as directed by the Mat. Lab. Supplier results used for approval.
	Quality Control	Contractor	Contractor / Mat. Lab.	1 / Transport	1 qt. friction top can				----	(AML) Contractor collects CD for each transport to maintain log of material received and provides to inspector during monthly visit. Contractor to sample if questionable and send sample to private lab or Materials Lab.
	Monitor	Dist. Lab	Dist. Lab	Sum of Transport quantities/ source / JMF / month		CD 8 & 9				(AML) Inspector collects CDs from contractor during monthly visit. Quantity for each JMF entered into SiteManager as a single Monitor sample per month for each source.
	Monitor	Dist. Lab S 201	Mat. Lab	1/plant working tank and transport /grade / visit *	2 - 1 qt friction top cans	----	----	----	----	Identify samples and send to Materials Lab for system monitoring (not part of project verification). Sample transport also if available during plant visit *Minimum 1 visit / month. Sample for project verification if questionable.
	Monitor	Dist. Lab S 201	Mat. Lab	1 roadway core / JMF / project *	6 in. core	----	----	----	----	*Send one core per JMF from 1st lot roadway acceptance or verification cores from District Lab to Materials Lab for liquid monitoring using GPC analysis (not part of project verification).

District Lab Responsibilities



Basic Sample Data

Addtl Sample Data

Contract

Other

Tests

Smpl ID: d222615B2150952

Status: Pending

Revised By:

Revising:

Sample Date: 11/02/15

Link To:

Link From:

Date Entered: 11/02/15

Smpl Type: Monitor

Acpt Meth: Test Results

Material: 0502M00010

Asphalt Concrete

Sampler:

P/S: Barriere Construction Company, LLC - Boutte PS00000560

Type: HMA Drum

City: Boutte

Prod Nm:

Mnfctr:

Info : H.001370.6

Geog Area: N/A

Intd Use: Barriere, Boutte - JMF 1234567890123

Repr Qty: .000

Lab Control Number: CNd222615B2150952

Auth By:

Auth Date: 00/00/00

Lab Reference Number:

Lock Type: No Lock

Locked By:

Lock Date:

Basic Sample Data	Addtl Sample Data	Contract	Other	Tests
Smpl ID: <input type="text" value="d222615B2150952"/>	Buy American: <input type="checkbox"/>			
Reqst By: <input type="text"/>				Witnessed By: <input type="text"/>
Smpl Size: <input type="text" value="N/A"/>				<input type="text" value="N/A"/>
Depth: <input type="text" value="N/A"/>				<input type="text" value="N/A"/>
Station: <input type="text"/>	Offset: <input type="text"/>			CS Log Mile: <input type="text"/>
Smpld From: <input type="text"/>				
Lift: <input type="text"/>	Zone: <input type="text"/>			
Design Type: <input type="text" value="SUPERPAVE"/>	Mix ID: <input type="text" value="123456789"/>			
Plant ID: <input type="text"/>			Plant Type: <input type="text" value="N/A"/>	
Creator User ID: <input type="text" value="d2226"/>	Sample Created from DWR <input type="checkbox"/>			
Last Modified User ID: <input type="text" value="d2226"/>	Last Modified Date: <input type="text" value="20/15/11"/>	DWR Date: <input type="text" value="00/00/00"/>		
			DWR Inspector: <input type="text"/>	

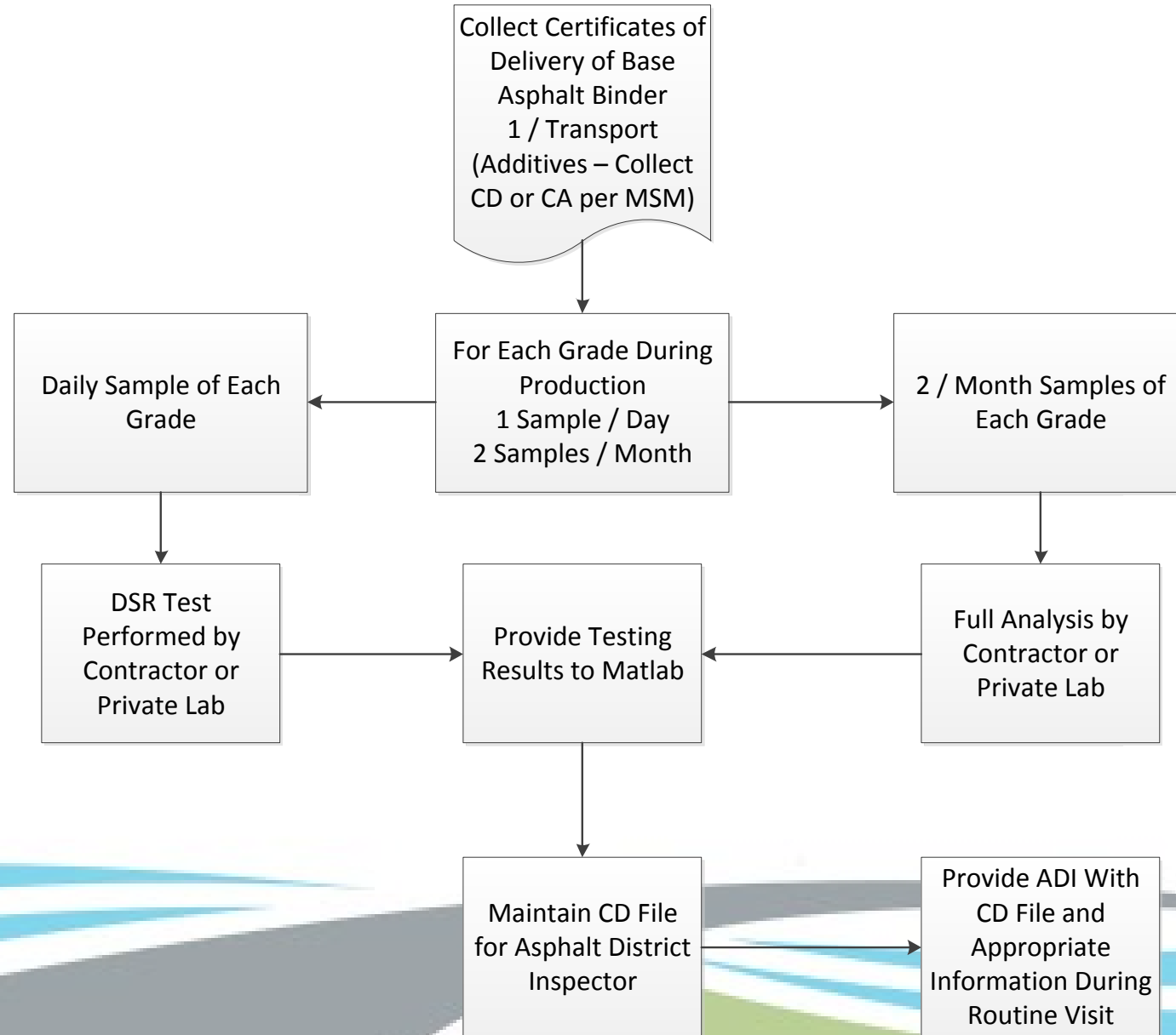
Plant-Blended Material

Asphalt Cement (Plant Blended)	Prelim. Source Approval / Valid.	Contractor / Dist. Lab	Mat. Lab						District Lab to approve blending facility and mix (validation), Materials Lab to approve blended liquid production material prior to proceeding.
	Quality Control	Contractor	Contractor / Mat. Lab.	1 / Transport	1 qt. friction top can				(AML) Contractor collects CD for each transport of base asphalt grade to maintain log of material received and provides to inspector during monthly visit. Contractor to sample if questionable and send sample to private lab or Materials Lab.
	Quality Control	Contractor	Contractor	1 / day 2 / month *	1 qt. friction top can				* Contractor to run DSR daily, and full analysis twice per month, and send results to Materials Lab.
	Monitor	Dist. Lab / Proj. Engr.	Dist. Lab	1 / Transport (base asphalt)		CD 8 & 9			(AML) Inspector collects CDs representing the base asphalt used for the blend from contractor during routine visit. Quantity for each project entered into SiteManager as a single sample.
	Monitor	Dist. Lab / Proj. Engr.	Mat. Lab	1 / week / type + base asphalt *	2 - 1 qt friction top cans				Collect sample of blended binder and base asphalt used for blend. Send sample directly to Materials Lab for system monitoring (not part of project verification). * Sample for project verification if questionable.
	Monitor	Dist. Lab S 201	Mat. Lab	1 roadway core / JMF / project *	6 in. core	----	----	----	*Send one core per JMF from 1st lot roadway acceptance or verification cores from District Lab to Materials Lab for analysis (not part of project verification).

Plant-Blended Material

Asphalt Cement (Plant Blended)	Prelim. Source Approval / Valid.	Contractor / Dist. Lab	Mat. Lab						District Lab to approve blending facility and mix (validation), Materials Lab to approve blended liquid production material prior to proceeding.
	Quality Control	Contractor	Contractor / Mat. Lab.	1 / Transport	1 qt. friction top can				(AML) Contractor collects CD for each transport of base asphalt grade to maintain log of material received and provides to inspector during monthly visit. Contractor to sample if questionable and send sample to private lab or Materials Lab.
	Quality Control	Contractor	Contractor	1 / day 2 / month *	1 qt. friction top can				* Contractor to run DSR daily, and full analysis twice per month, and send results to Materials Lab.
	Monitor	Dist. Lab / Proj. Engr.	Dist. Lab	1 / Transport (base asphalt)		CD 8 & 9			(AML) Inspector collects CDs representing the base asphalt used for the blend from contractor during routine visit. Quantity for each project entered into SiteManager as a single sample.
	Monitor	Dist. Lab / Proj. Engr.	Mat. Lab	1 / week / type + base asphalt *	2 - 1 qt friction top cans				Collect sample of blended binder and base asphalt used for blend. Send sample directly to Materials Lab for system monitoring (not part of project verification). * Sample for project verification if questionable.
	Monitor	Dist. Lab 201 S	Mat. Lab	1 roadway core / JMF / project *	6 in. core	----	----	----	*Send one core per JMF from 1st lot roadway acceptance or verification cores from District Lab to Materials Lab for analysis (not part of project verification).

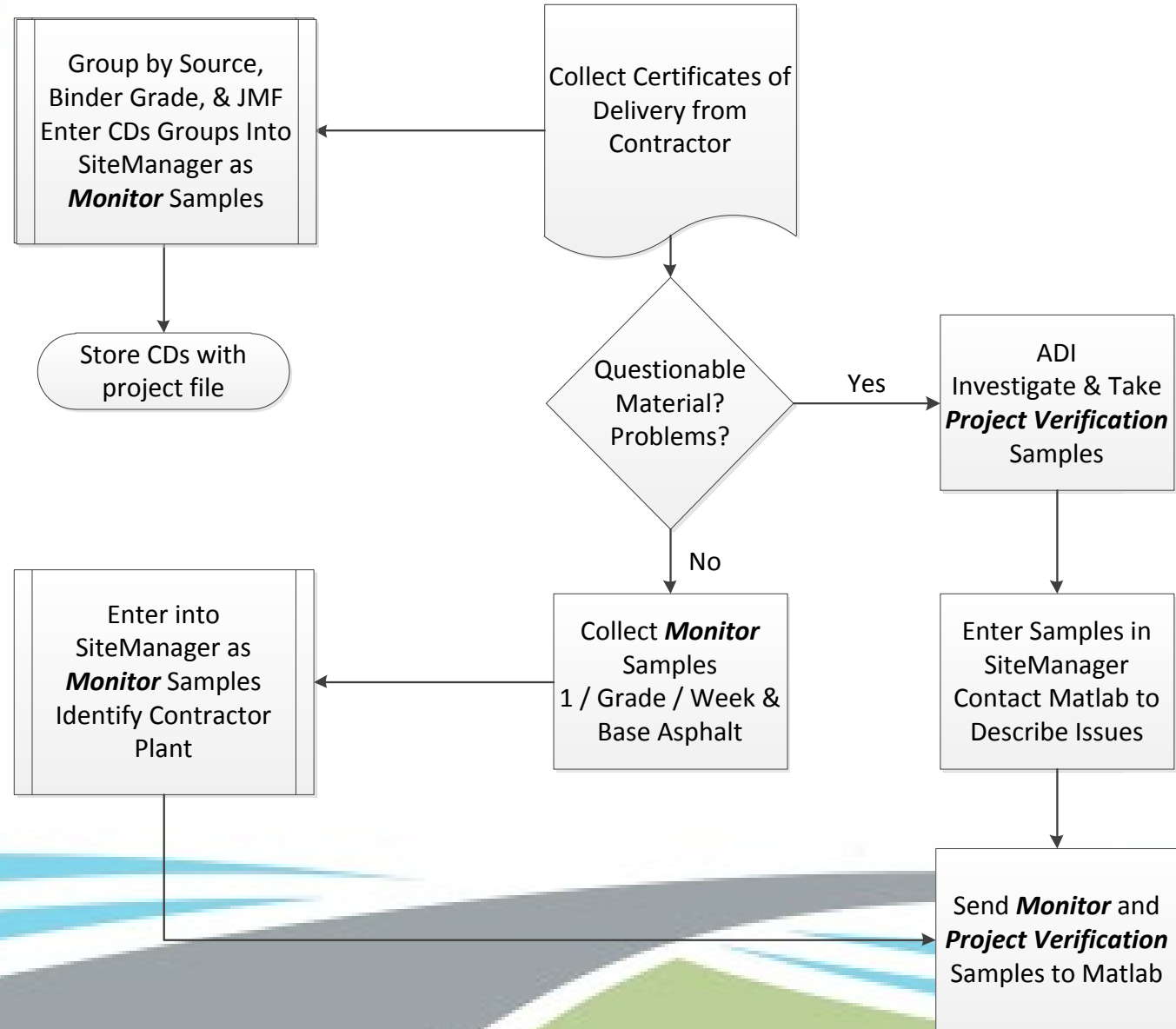
Contractor Responsibilities for Asphalt Binder (Plant Blended)



Plant-Blended Material

Asphalt Cement (Plant Blended)	Prelim. Source Approval / Valid.	Contractor / Dist. Lab	Mat. Lab						District Lab to approve blending facility and mix (validation), Materials Lab to approve blended liquid production material prior to proceeding.
	Quality Control	Contractor	Contractor / Mat. Lab.	1 / Transport	1 qt. friction top can				(AML) Contractor collects CD for each transport of base asphalt grade to maintain log of material received and provides to inspector during monthly visit. Contractor to sample if questionable and send sample to private lab or Materials Lab.
	Quality Control	Contractor	Contractor	1 / day 2 / month *	1 qt. friction top can				* Contractor to run DSR daily, and full analysis twice per month, and send results to Materials Lab.
	Monitor	Dist. Lab / Proj. Engr.	Dist. Lab	1 / Transport (base asphalt)		CD 8 & 9			(AML) Inspector collects CDs representing the base asphalt used for the blend from contractor during routine visit. Quantity for each project entered into SiteManager as a single sample.
	Monitor	Dist. Lab / Proj. Engr.	Mat. Lab	1 / week / type + base asphalt *	2 - 1 qt friction top cans				Collect sample of blended binder and base asphalt used for blend. Send sample directly to Materials Lab for system monitoring (not part of project verification). * Sample for project verification if questionable.
	Monitor	Dist. Lab S 201	Mat. Lab	1 roadway core / JMF / project *	6 in. core	----	----	----	*Send one core per JMF from 1st lot roadway acceptance or verification cores from District Lab to Materials Lab for analysis (not part of project verification).

Asphalt District Inspector Responsibilities (Plant Blended)

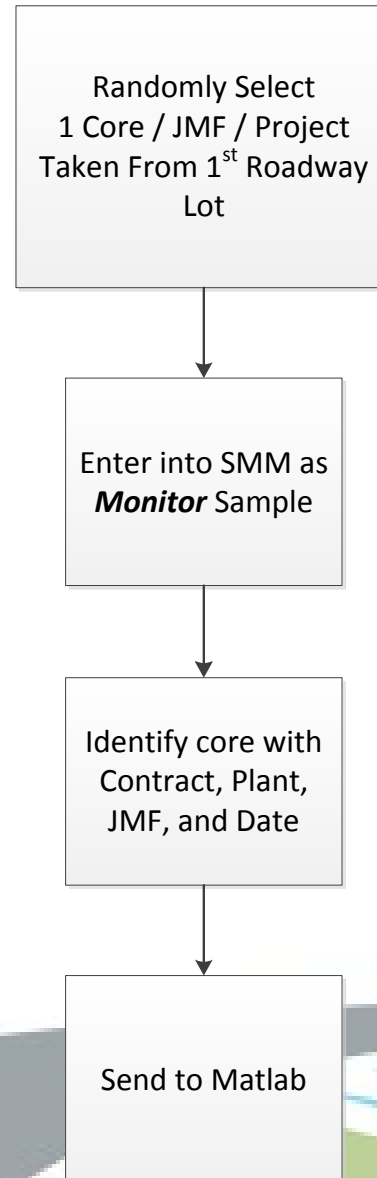


Material Code	Material Full Name	Material Category
1002M00220	Anti-Strip Additive	Additive-Asphalt
1002M00230	Cellulose Fibers	Additive-Asphalt
1002M00240	Mineral Fibers	Additive-Asphalt
1002M00250	Binder PG 70-22m Plant-Blended	Asphalt: Binder
1002M00260	Binder PG 82-22m Plant-Blended	Asphalt: Binder
1002M00270	Warm Mix Asphalt Chemical Additive	Additive-Asphalt
1002M00280	Binder PG 76-22m Plant-Blended	Asphalt: Binder

Plant-Blended Material

Asphalt Cement (Plant Blended)	Prelim. Source Approval / Valid.	Contractor / Dist. Lab	Mat. Lab						District Lab to approve blending facility and mix (validation), Materials Lab to approve blended liquid production material prior to proceeding.
	Quality Control	Contractor	Contractor / Mat. Lab.	1 / Transport	1 qt. friction top can				(AML) Contractor collects CD for each transport of base asphalt grade to maintain log of material received and provides to inspector during monthly visit. Contractor to sample if questionable and send sample to private lab or Materials Lab.
	Quality Control	Contractor	Contractor	1 / day 2 / month *	1 qt. friction top can				* Contractor to run DSR daily, and full analysis twice per month, and send results to Materials Lab.
	Monitor	Dist. Lab / Proj. Engr.	Dist. Lab	1 / Transport (base asphalt)		CD 8 & 9			(AML) Inspector collects CDs representing the base asphalt used for the blend from contractor during routine visit. Quantity for each project entered into SiteManager as a single sample.
	Monitor	Dist. Lab / Proj. Engr.	Mat. Lab	1 / week / type + base asphalt *	2 - 1 qt friction top cans				Collect sample of blended binder and base asphalt used for blend. Send sample directly to Materials Lab for system monitoring (not part of project verification). * Sample for project verification if questionable.
	Monitor	Dist. Lab S 201	Mat. Lab	1 roadway core / JMF / project *	6 in. core	----	----	----	*Send one core per JMF from 1st lot roadway acceptance or verification cores from District Lab to Materials Lab for analysis (not part of project verification).

District Lab Responsibilities (Plant Blended)

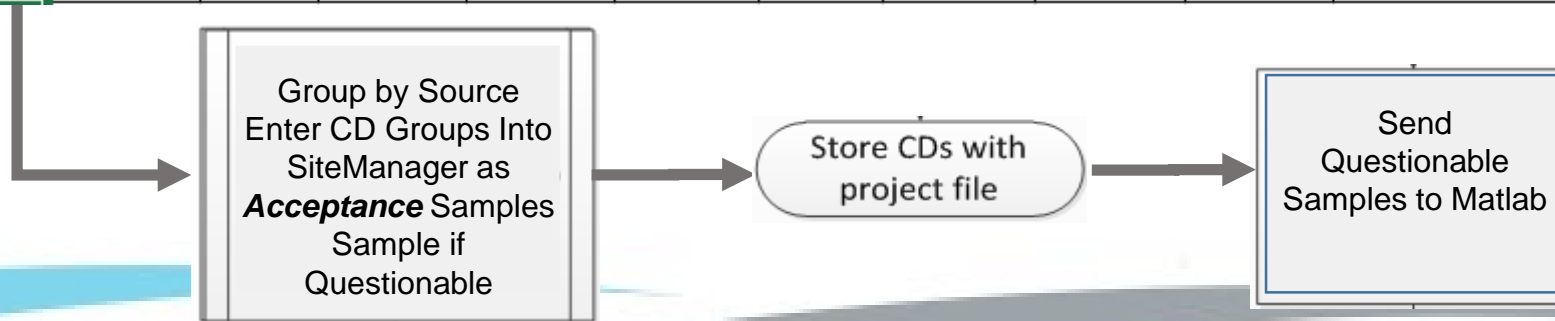


Emulsified Asphalt Tack Coat

ASPHALT TACK COAT	Emulsified Asphalt	Accept.	----	Proj. Engr.	1/shipment*	1 gal plastic bottle	CD 1 & 7	No CD required if less than 250 gal.	----	(AML) *Visual inspection by Proj. Engr. Sample only if questionable.
		Verif.	Proj. Engr.	Dist. Lab	1 / 15,000 gallons	1 gal plastic bottle	----	----	----	District to test for residue % or viscosity.
		Monitor	Proj. Engr.	Mat. Lab	1 / type / project	1 gal plastic bottle	----	----	----	Send sample directly to Materials Lab for system monitoring (not part of project verification).
	Tack Coat Rate of Application	Accept.	Proj. Engr.	Proj. Engr.	2/day	-----	----	----	----	*Undiluted emulsion gallons, based on meter readings on distributor or spray paver by proj. Engr., divided by sq. yd covered. Compare to specified rate. Pay for gallons applied.

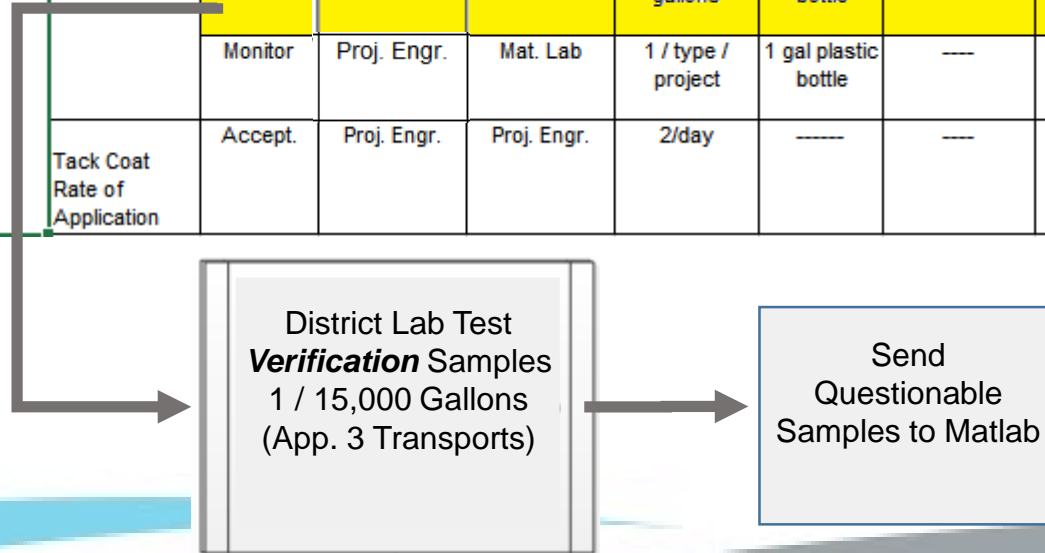
Emulsified Asphalt Tack Coat

ASPHALT TACK COAT	Emulsified Asphalt	Accept.	-----	Proj. Engr.	1/shipment*	1 gal plastic bottle	CD 1 & 7	No CD required if less than 250 gal.	-----	(AML) *Visual inspection by Proj. Engr. Sample only if questionable.
		Verif.	Proj. Engr.	Dist. Lab	1 / 15,000 gallons	1 gal plastic bottle	---	---	---	District to test for residue % or viscosity.
		Monitor	Proj. Engr.	Mat. Lab	1 / type / project	1 gal plastic bottle	---	---	---	Send sample directly to Materials Lab for system monitoring (not part of project verification).
	Tack Coat Rate of Application	Accept.	Proj. Engr.	Proj. Engr.	2/day	-----	---	---	-----	*Undiluted emulsion gallons, based on meter readings on distributor or spray paver by proj. Engr., divided by sq. yd covered. Compare to specified rate. Pay for gallons applied.



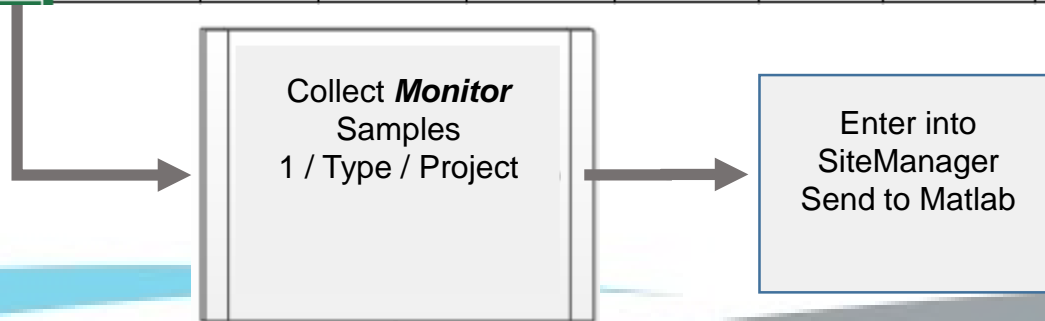
Emulsified Asphalt Tack Coat

ASPHALT TACK COAT	Emulsified Asphalt	Accept.	----	Proj. Engr.	1/shipment*	1 gal plastic bottle	CD 1 & 7	No CD required if less than 250 gal.	----	(AML) *Visual inspection by Proj. Engr. Sample only if questionable.
		Verif.	Proj. Engr.	Dist. Lab	1 / 15,000 gallons	1 gal plastic bottle	----	----	----	District to test for residue % or viscosity.
		Monitor	Proj. Engr.	Mat. Lab	1 / type / project	1 gal plastic bottle	---	---	---	Send sample directly to Materials Lab for system monitoring (not part of project verification).
	Tack Coat Rate of Application	Accept.	Proj. Engr.	Proj. Engr.	2/day	-----	---	---	----	*Undiluted emulsion gallons, based on meter readings on distributor or spray paver by proj. Engr., divided by sq. yd covered. Compare to specified rate. Pay for gallons applied.



Emulsified Asphalt Tack Coat

ASPHALT TACK COAT	Emulsified Asphalt	Accept.	----	Proj. Engr.	1/shipment*	1 gal plastic bottle	CD 1 & 7	No CD required if less than 250 gal.	----	(AML) *Visual inspection by Proj. Engr. Sample only if questionable.
		Verif.	Proj. Engr.	Dist. Lab	1 / 15,000 gallons	1 gal plastic bottle	---	---	---	District to test for residue % or viscosity.
		Monitor	Proj. Engr.	Mat. Lab	1 / type / project	1 gal plastic bottle	---	---	---	Send sample directly to Materials Lab for system monitoring (not part of project verification).
	Tack Coat Rate of Application	Accept.	Proj. Engr.	Proj. Engr.	2/day	-----	---	---	---	*Undiluted emulsion gallons, based on meter readings on distributor or spray paver by proj. Engr., divided by sq. yd covered. Compare to specified rate. Pay for gallons applied.





Thank you!

Questions?