

# Attributes of Successful State Research Programs

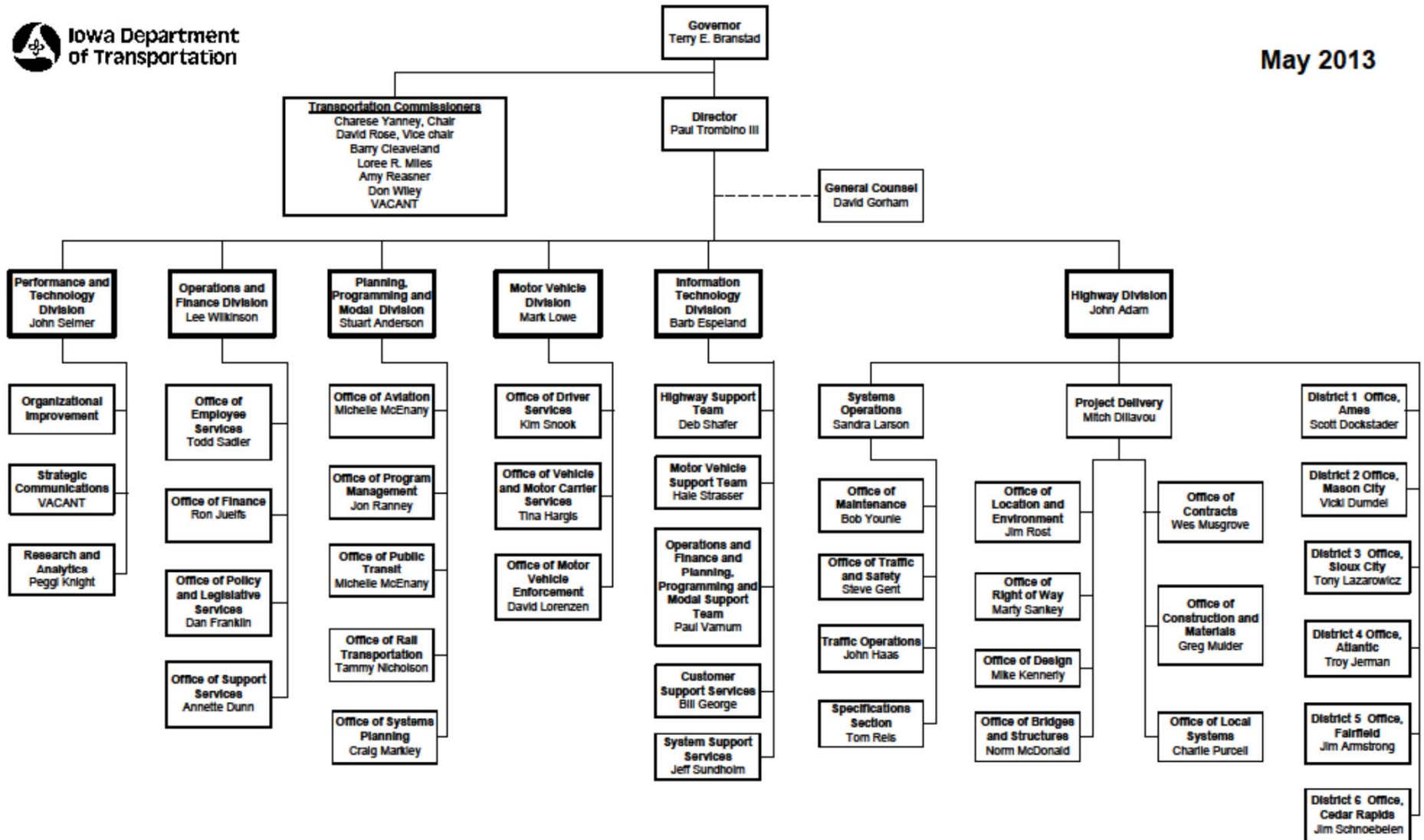
Peggi Knight, Director  
Office of Research and Analytics  
Iowa Department of Transportation



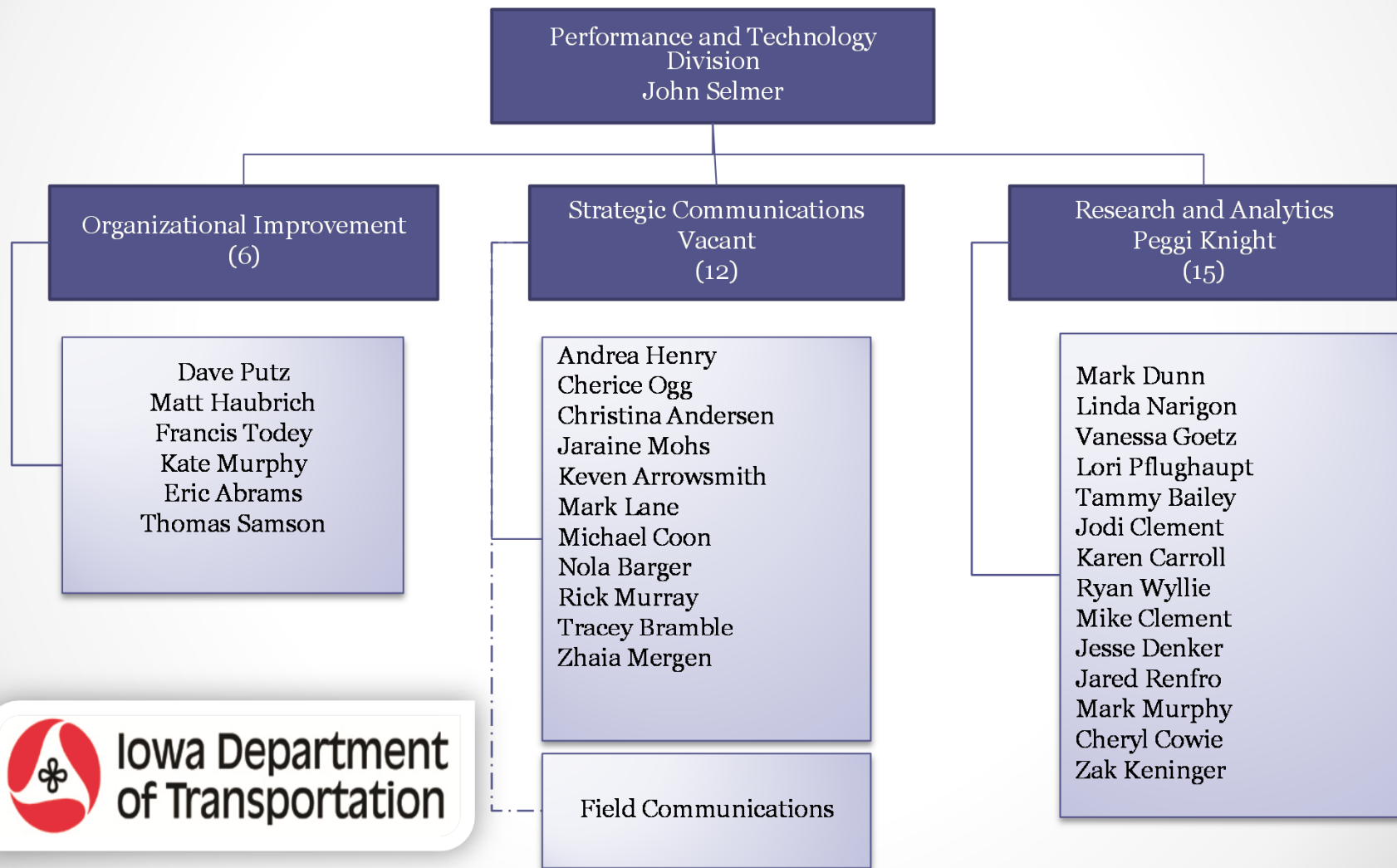
# Iowa's Research Program

- Iowa Highway Research Board (State) - ~\$2.2 M
  - State - \$750,000
  - City Annual Street Research Funding - \$200,000
  - County Secondary Road Research Fund - \$1,263,550
- State - \$750,000
- Traffic Safety Improvement Program (State) - ~\$0.5 M
- State Planning and Research (Federal) - \$2.1 M
  - Annual programs (NCHRP, TRB, SHRPII, InTrans Admin, Training, etc.) – \$1.3 M
  - Committed Funds for ongoing projects (FY14) - ~\$280,000
  - Funds reserved for later programming - \$300,000





# Performance and Technology Division



Iowa Department  
of Transportation

# Research Direction

- Iowa Highway Research Board
  - DOT Structures
  - DOT Materials
  - DOT District
  - DOT Maintenance
  - 2 City Representatives
  - 7 County Representatives
  - Iowa State University Institute for Transportation (InTrans)
  - University of Iowa
- Iowa Research Advisory Committee
  - Information Technology
  - Motor Vehicle Division
  - 2 Operations and Finance Division
  - 2 Performance and Technology Division
  - 2 Planning and Programming Division
  - 3 Highway Division



# Iowa Highway Research Board

- Established in 1949 by Iowa Highway Commission
  - City street funds and county funds allocated by Iowa Code
  - DOT funds allocated by Transportation Commission
- Goals:
  - Improve the efficiency and effectiveness of highway transportation and engineering in Iowa
  - Identify needed research and engineering development activity
  - Encourage collaborative involvement
  - Support research implementation
- Annual call for problem statements
  - Approximately 60 projects considered
  - Projects ranked by the board
  - 10-12 projects developed annually



# Iowa Research Advisory Committee

## Mission:

- To provide guidance and advise on prioritization of new research ideas submitted to the Office of Research and Analytics and to encourage collaborative involvement and support of implementation that aligns with the Iowa DOT strategic plan and goals and supports the Department's business functions.
- To improve awareness of research activities and initiatives.



# Research Projects

- SPR
  - 19 New
  - 45 Ongoing
- Pooled Funds
  - 1 New
  - 15 Ongoing that Iowa leads
    - Aurora (6 active subprojects)
    - Smart Work Zone (11 active subprojects)
  - 52 Ongoing that we participate in
- Highway Research Board
  - 10 New
  - 39 Ongoing
- Training and Conference Planning
  - ~15 courses per year





# Personnel

- 4 DOT Research Staff
  - Iowa Highway Research Board
  - SPR
  - County
  - Contract Administration
- Agreement with Iowa State University (ISU) Institute for Transportation (InTrans)
  - Administrative support , program management and conduct of research for Iowa DOT projects and programs
  - Shared resources
    - Transportation Materials Engineer
    - Bridge Engineer
    - National Concrete Pavement Technology Center
    - Pavement Systems Research Engineer
    - Center for Earthworks Engineering Research
    - Statewide Urban Design and Specification program
    - Transportation Operations Engineer and Center



# Basic Agreement with ISU

- Reduced overhead
- Work order contracts via addendum
- No overhead on subcontracts with University of Iowa
- Strong partnerships



# Agency Involvement

- Mid-Continent Transportation Symposium
- Ideas for research projects can be submitted by any Iowa DOT employee through DOT intranet
- Technical Advisory Committee required for all research projects which include DOT representatives as well as others
- Technical training initiatives funded through SPR include cross agency participation



•

# Agency Involvement

- Lunch and Learn
- Newsletter
- Videos and YouTube
- Dissemination of research information
- Annual TRB visit
- Peer Exchange every 2 years
- Focus Groups (County, Structures, Traffic and Safety, Pavements and Materials, Environmental, Winter Maintenance)
- Technology Transfer Documents
- 



# Strengths

- Adequate funding
- Flexibility
- Reduced bureaucracy
- Fosters inclusion and implementation
- Transparent
- Collaboration facilitates competing for additional resources from outside sources
- Partnerships
  - Universities
  - Counties
  - Cities
  - Industry



•



IOWA STATE UNIVERSITY  
Institute for Transportation



**2013 Mid-Continent Transportation Research Symposium**  
**Gateway Hotel and Conference Center, Ames, IA**  
**August 15-16, 2013**

<http://www.intrans.iastate.edu/events/midcon2013/registration/>

