

# How to Conduct a Tailgate Talk

*A Tailgate Talk is a brief training session on a single safety topic, typically held around the tailgate of a truck or another convenient spot. It should last 10-15 minutes with a small group of workers.*

## KEY POINTS

- Choose one safety topic per session.
- Keep it short and concise.
- Hold sessions with 6-10 workers.
- Ensure the location is comfortable and safe.
- Allow time for questions and answers.
- Document the training.

## CHOOSE SAFETY TOPICS

- Focus on recent events or ask employees for suggestions.
- Use newsletters and local news for additional ideas.

## PLAN LOGISTICS

- Limit sessions to 6-10 workers.
- Hold sessions earlier in the week (avoid Monday mornings).
- Conduct sessions weekly, dedicating specific time for training.
- Keep sessions under 15 minutes.

## PREPARE AND CONDUCT THE SESSION

- Include visual aids and handouts.
- Familiarize yourself with the materials beforehand.
- Keep the presentation informal and avoid technical jargon.
- Involve workers in the discussion.
- Allow time for questions and have workers sign a training acknowledgment sheet.



## Contact Us

### Local Technical Assistance Program (LTAP)

Louisiana Transportation Research Center at LSU  
4099 Gourrier Avenue  
Baton Rouge, LA 70808-4443

225-767-9717

[www.louisianaltap.org](http://www.louisianaltap.org)  
[LTAP@la.gov](mailto:LTAP@la.gov)



Subscribe with us!

  @LouisianaLTAPCenter

# Louisiana's Tailgate Talk Series

## Chainsaw Personal Protection Equipment



The Louisiana Local Technical Assistance Program (LTAP) Center serves training needs of local transportation agencies.

We are part of the Louisiana Transportation Research Center (LTRC), which is a cooperative effort between the Louisiana Department of Transportation and Development (DOTD), the Federal Highway Administration (FHWA), and Louisiana State University (LSU).

## Timely Safety Briefings

# Chainsaw PPE

## TWO FORMS OF FALL PROTECTION WHEN IN A TREE

Using fall protection equipment like body belts, harnesses, and lanyards is essential for preventing serious injury when working at heights or on unstable surfaces. Prioritizing fall protection helps maintain a secure working environment and reduces the risk of falls.

## EYE PROTECTION

Eye protection such as side shields, safety goggles, and face shields is essential to protect against flying debris and fast-moving sticks when using a chainsaw. To avoid interruptions and keep lenses clear, consider using defogging gel or spray.

## HELMET

A well-fitting helmet with a snug chinstrap is essential for chainsaw use. Helmets come with various accessories such as communication systems, ear muffs, and face shields. In some situations, a face shield may be necessary for added protection.

## GLOVES

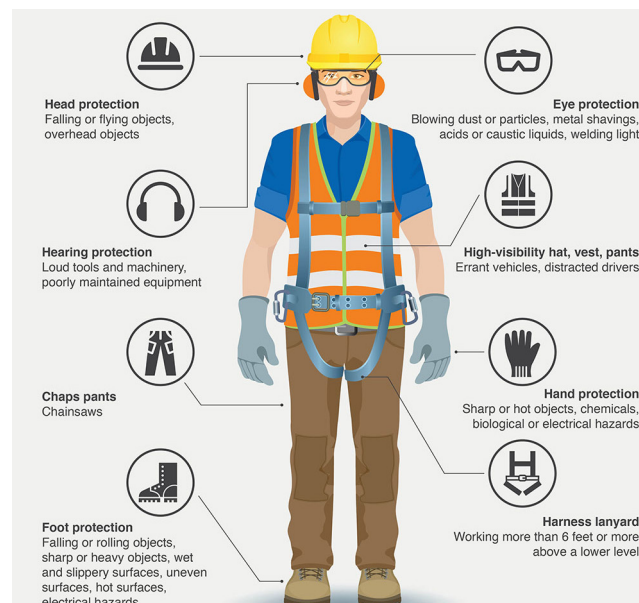
Leather gloves reinforced with ballistic nylon on the back provide a secure grip on the chainsaw and help absorb vibration, offering hand protection. They also reduce the risk of cuts when sharpening the saw. Any gloves are better than none, as the most common chainsaw injuries occur from the shoulder down to the hand.

## EAR PROTECTION

Hearing protection is crucial when operating a chainsaw as they produce noise levels ranging from 95 to 115 dBA. Prolonged exposure to such high noise can lead to temporary or even permanent hearing loss. Wearing proper ear protection such as earmuffs or earplugs helps prevent this risk, and ensures your long-term auditory health while working.

## CLOTHING

Trousers or chaps with sewn-in ballistic nylon pads offer better protection, especially those that cover the belt line rather than just the upper thigh. These garments are designed to stop the chainsaw before it cuts you. If chainsaw-specific clothing isn't available, wear close-fitting, cuff-free clothing made of tightly woven fabrics. Always wear well-fitted safety boots with rubber soles for slip resistance, easy navigation of debris, and extra cut protection.



# Resources

## Working Safely With Chainsaws

<https://www.osha.gov/sites/default/files/publications/chainsaws.pdf>

## CDC Natural Disaster and Severe Weather - Chainsaw Safety

<https://www.cdc.gov/natural-disasters/safety/chain-saw-safety.html>

## OSHA Quick Card

<https://www.osha.gov/Publications/3269-10N-05-english-06-27-2007.html>

## Chainsaw Safety Training

<https://www.ltrc.lsu.edu/ltap/training.htm>

## Chainsaws - Personal Protective Equipment and Clothing

[https://www.ccohs.ca/oshanswers/safety\\_haz/chainsaws/ppe.html](https://www.ccohs.ca/oshanswers/safety_haz/chainsaws/ppe.html)

## ArborMaster

<https://www.arbormaster.com/types-of-training>

# Tailgate Talk Resources

## Louisiana LTAP

<https://www.ltrc.lsu.edu/ltap/tailgate-talks.html>

## NLTAPA

<https://nltapa.org/informationexchange/nltapa-tailgate-talks/>

## T2 Tailgate Talks

[https://www.cti.uconn.edu/cti/T2\\_Tailgate\\_Talks.asp](https://www.cti.uconn.edu/cti/T2_Tailgate_Talks.asp)