

Louisiana LTAP

The Louisiana Local Technical Assistance Program (LTAP) Center serves training needs of local transportation agencies.

We are part of the Louisiana Transportation Research Center (LTRC), which is a cooperative effort between the Louisiana Department of Transportation and Development (DOTD), the Federal Highway Administration (FHWA), and Louisiana State University (LSU).



Contact Us

Local Technical Assistance Program (LTAP)

Louisiana Transportation
Research Center at LSU
4099 Gourrier Avenue
Baton Rouge, LA 70808-4443

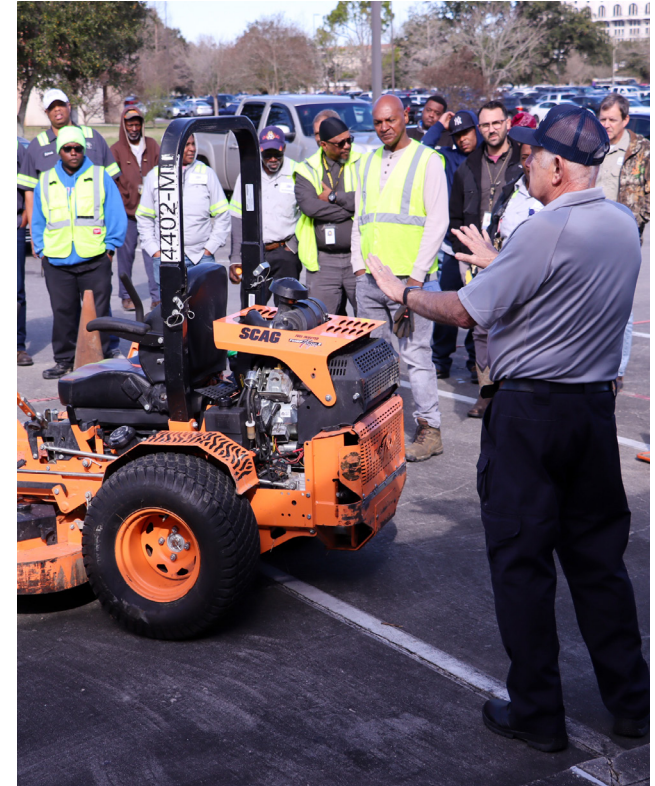
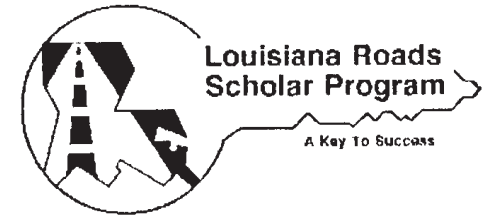
225-767-9717

www.louisianaltap.org
LTAP@la.gov



Subscribe with us!

  @LouisianaLTAPCenter



This program provides cost-effective training to local transportation and public works agencies on road and bridge maintenance as well as roadway and worker safety topics. All courses offer Professional Development Hours (PDHs).

www.louisianaltap.org

About the Roads Scholar Program

Louisiana has a total of 61,300 public road miles of state highways and local roads. Local governments are responsible for the maintenance of 73% or 44,700 of these road miles in addition to nearly 5,000 bridges (38% of the total public bridges in the state).

The Roads Scholar (RS) Program gives local transportation personnel the opportunity to improve their road and bridge maintenance skills. It consists of 16 courses that are six hours long. They are offered over a three-year period in convenient locations across the state.

Participants who complete the program will have acquired a basic knowledge of road maintenance, work zone safety and worker safety. A certificate is awarded upon completion of the program.

Program Requirements

To become a Roads Scholar graduate, a participant must complete all six (6) required courses and a minimum of four (4) elective courses. You have the option to attend all ten (10) elective courses.

Upcoming classes can be found on LTAP website:

<https://www.ltrc.lsu.edu/ltap/roads-scholar.html>

We offer our classes at convenient locations across the state so that they are easily accessible to most local agencies.



Required Courses

Here are the required courses that must be taken by a Roads Scholar graduate candidate:

RS #1: Basics of A Good Road

RS #2: Asphalt Roads: Common Maintenance Problems

RS #3: Drainage: Key to Roads That Last

RS #4: Temporary Traffic Control for Local Agencies

RS #5: Safety: A Common Sense Approach for Public Works Employees

RS #6: Heavy Equipment Safety and Maintenance for Local Agencies

Elective Courses

A Roads Scholar graduate must attend at least four elective courses from the list below. Participants are welcomed to attend additional courses as desired.

RS #7: Pavement Preservation and Road Surface Management

RS #8: Successful Supervision for Local Road Supervisors

RS #9: The Road To Better Signing

RS #10: Unpaved and Gravel Roads

RS #11: Road Safety Topic

RS #12: Trenching and Excavation

RS #13: Inspection of Local Bridges

RS #14: Bridge Maintenance and Repair

RS #15: Safety for Public Works First Responders

RS #16: Roadway Construction Focus Four and Heat Hazards

All classes provide 6 PDHs unless advertised otherwise

Roads Scholar Graduation

Depending on the number of Roads Scholar graduates, LTAP will hold a Graduation Ceremony at any of the following events:

- Louisiana Parish Engineers & Supervisors Association (LPESA) Conference
- LTAP Class in your area
- DOTD District or Parish event
- Council meetings