

# Winter Weather 2019





# DOTD OPERATIONS

- **Centralized Coordination**
- **De-Centralized Operations**



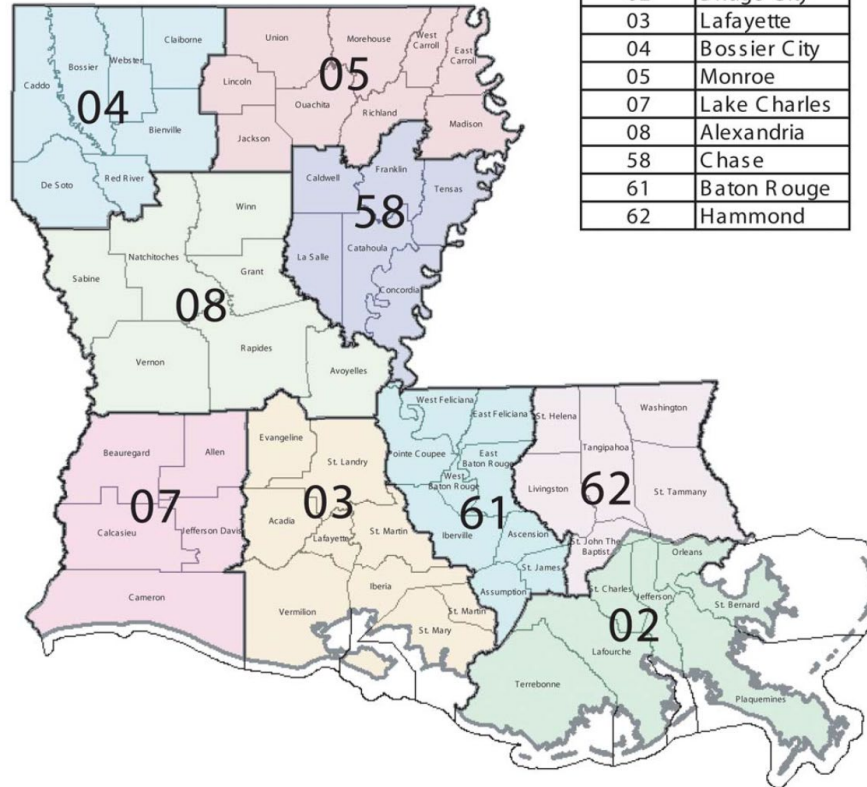


LOUISIANA DEPARTMENT OF TRANSPORTATION & DEVELOPMENT

# DOTD DISTRICTS

DOTD Districts

Number	District Name
02	Bridge City
03	Lafayette
04	Bossier City
05	Monroe
07	Lake Charles
08	Alexandria
58	Chase
61	Baton Rouge
62	Hammond



# DOTD DISTRICTS

- **ESF-1** (Evacuation Transportation)
  - Has Contract for Coach Bus Resources
  - Operates Vehicle Staging Areas (VSA) for Transportation Resources
  - Transports Evacuees
- **ESF-3** (Public Works and Engineering)
  - Roads
  - Bridges
  - FHWA Roads and Bridges
  - Flood Fight
  - Debris
  - Engineering SME



# ESF-1 & ESF-3 Support

- DOTD is a resource to other State agencies in time of need
- DOTD is a resource for Parishes and Municipalities
  - We can assist with Transportation, Public Works and Engineering assistance
    - If we have to buy the resource - you can probably get it faster if you buy it direct (some State contracts are available)



# WINTER WEATHER PREPREATION

- Equipment Readiness
- Supplies and Materials
- Manpower
- SA Systems
- Communications
- New Position Holder Orientation/Training



# DOTD ITS

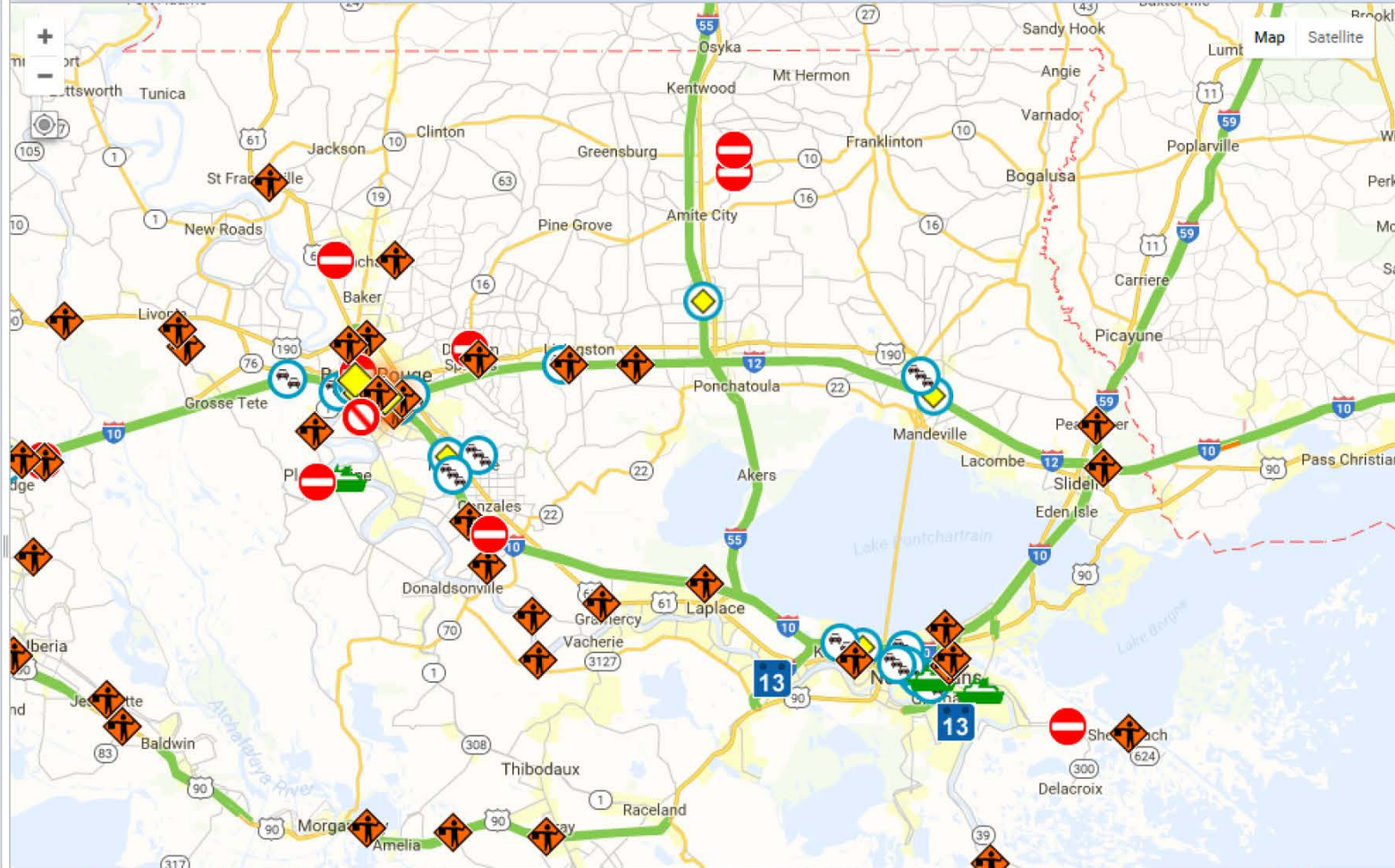
- For the latest in Traffic status:
  - 511La.org
  - Facebook
  - Twitter



Text Size A A A Text Only Future Info: 31

Road Reports, Construction, Waze Reports, Weather Warnings, Ferry Status, Flooding/Ice, Google Traffic

- Menu
- Personalize your 511
- All Reports
- Flooding/Ice
- Road Reports
- Cameras
- Google Speeds and Incidents
- Ferry Status





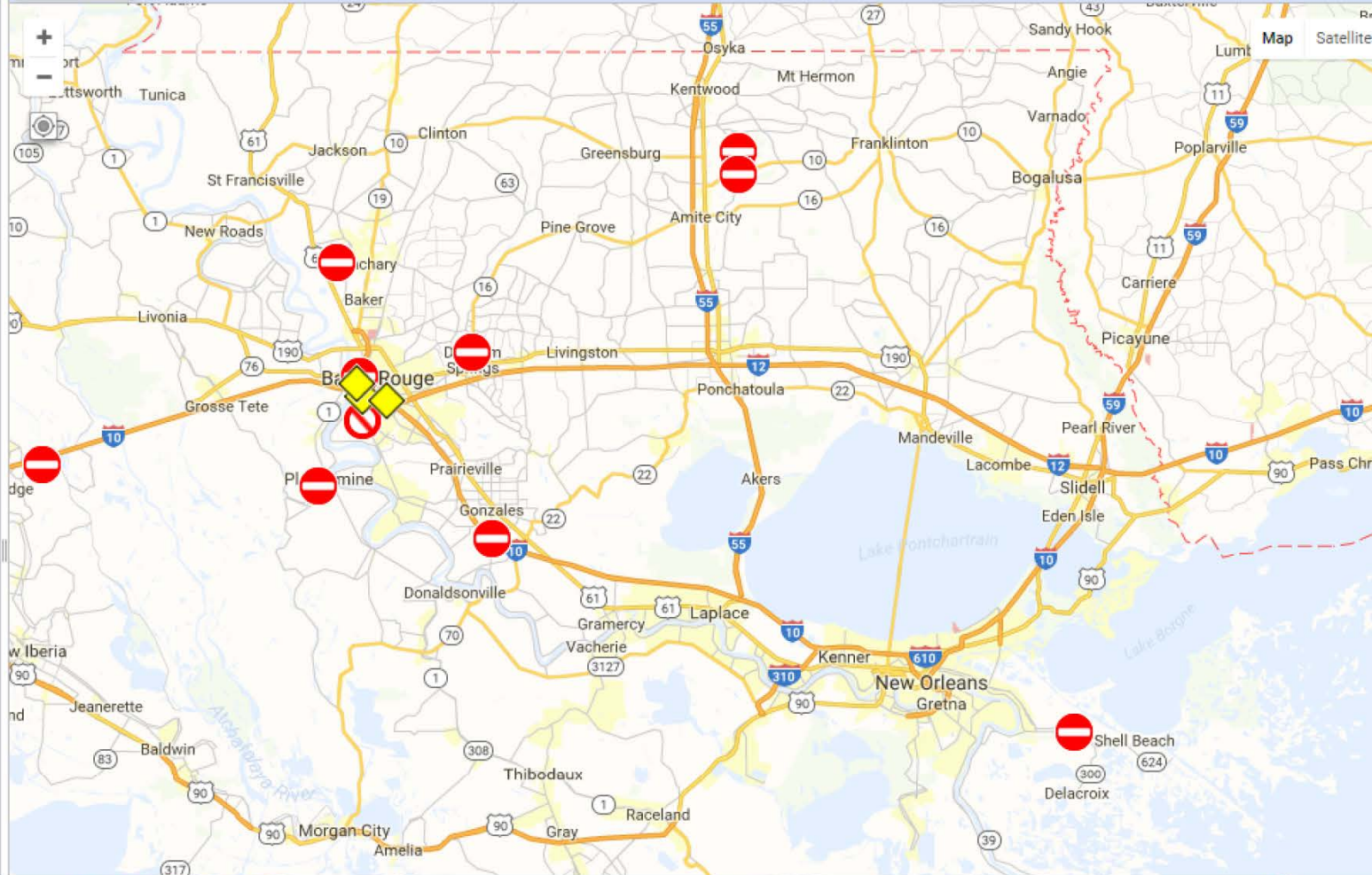
Text Size A A A Text Only Future Info: 31



Layers

### Road Reports

- Menu
- Personalize your 511
- All Reports
- Flooding/Ice
- Road Reports**
- Cameras
- Google Speeds and Incidents
- Ferry Status



Text Size A A A Text Only Future Info: 31



Layers

Menu

Personalize your 511

All Reports

Flooding/Ice

Road Reports

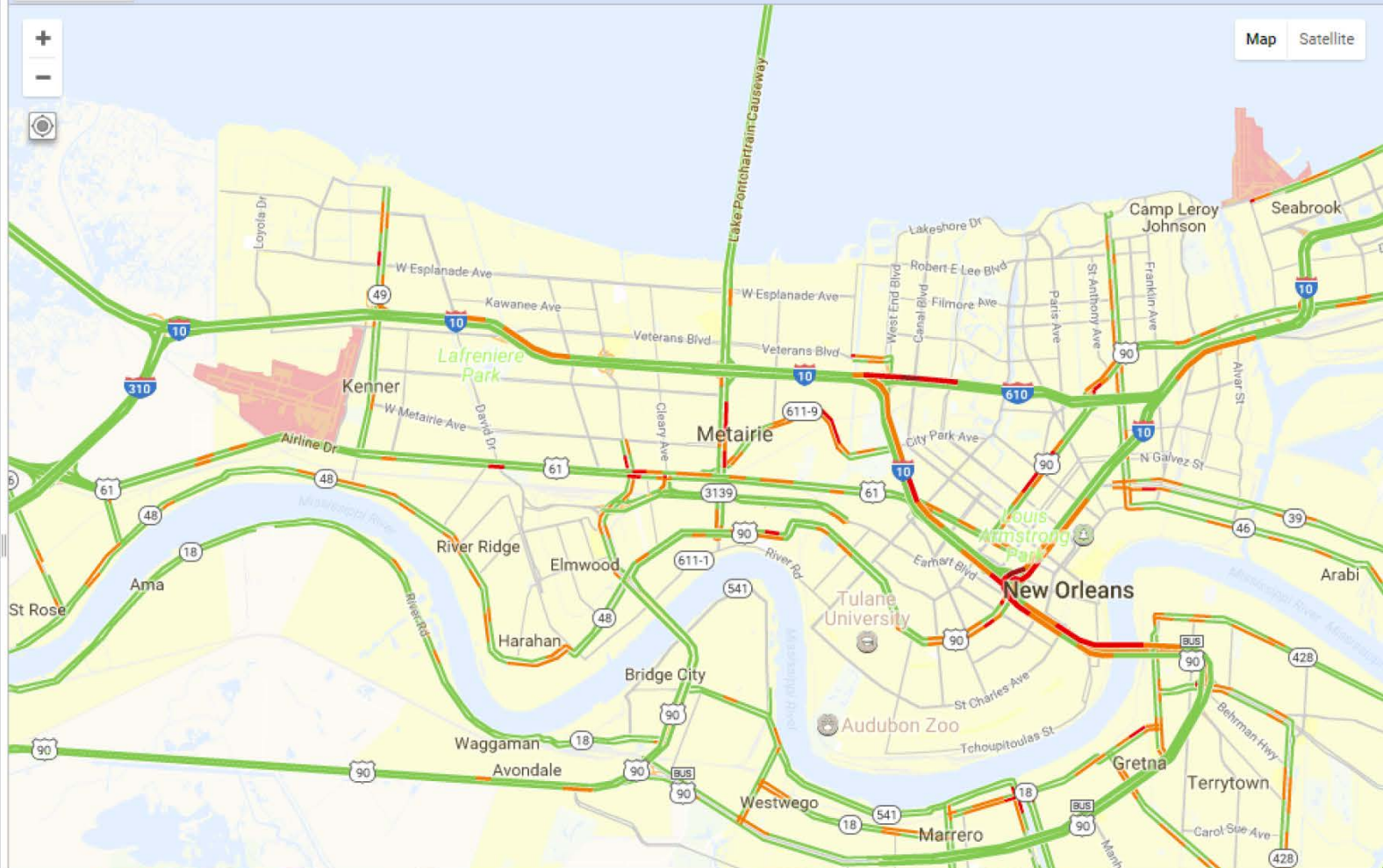
Cameras

Google Speeds and Incidents

Ferry Status

### Google Traffic Speeds

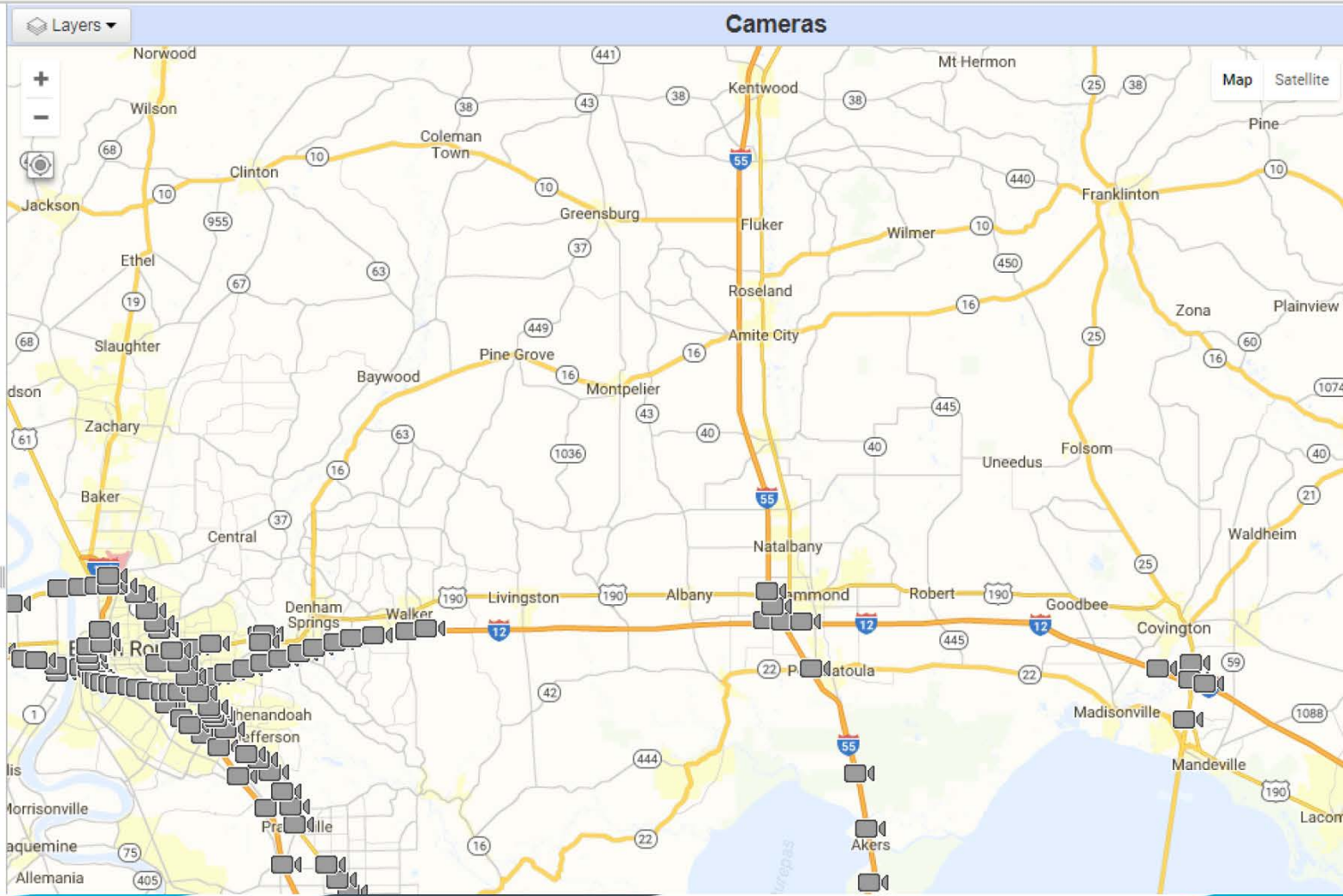
Map Satellite





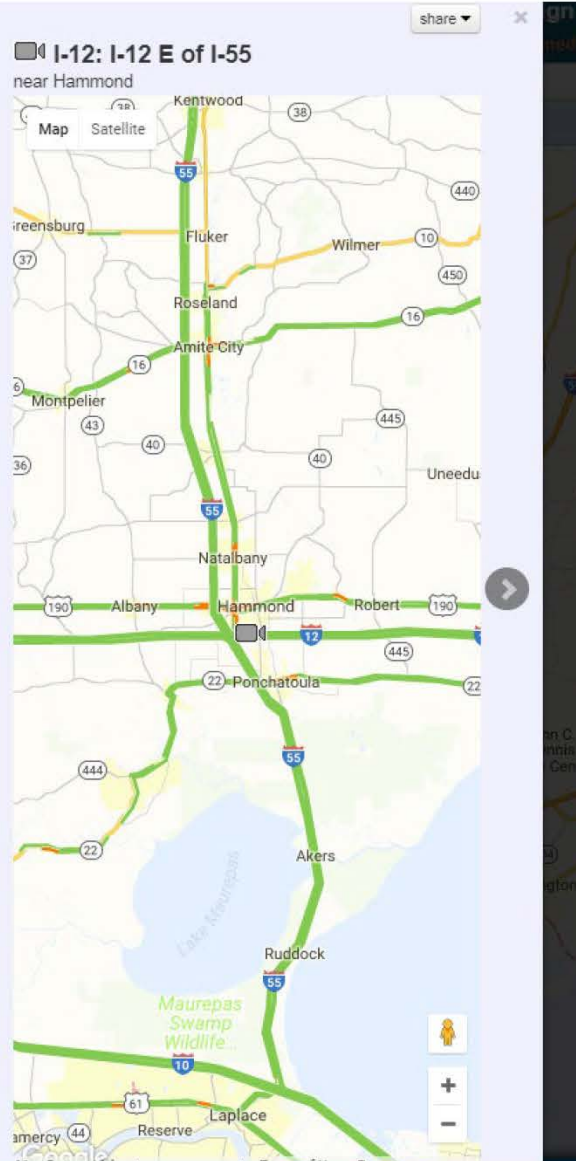
Text Size A A A Text Only Future Info: 31

- Menu
  - Personalize your 511
  - All Reports
  - Flooding/Ice
  - Road Reports
  - Cameras**
  - Google Speeds and Incidents
  - Ferry Status





LOUISIANA DEPARTMENT OF  
TRANSPORTATION & DEVELOPMENT





LOUISIANA DEPARTMENT OF  
TRANSPORTATION & DEVELOPMENT

# PRIORITY ROUTES

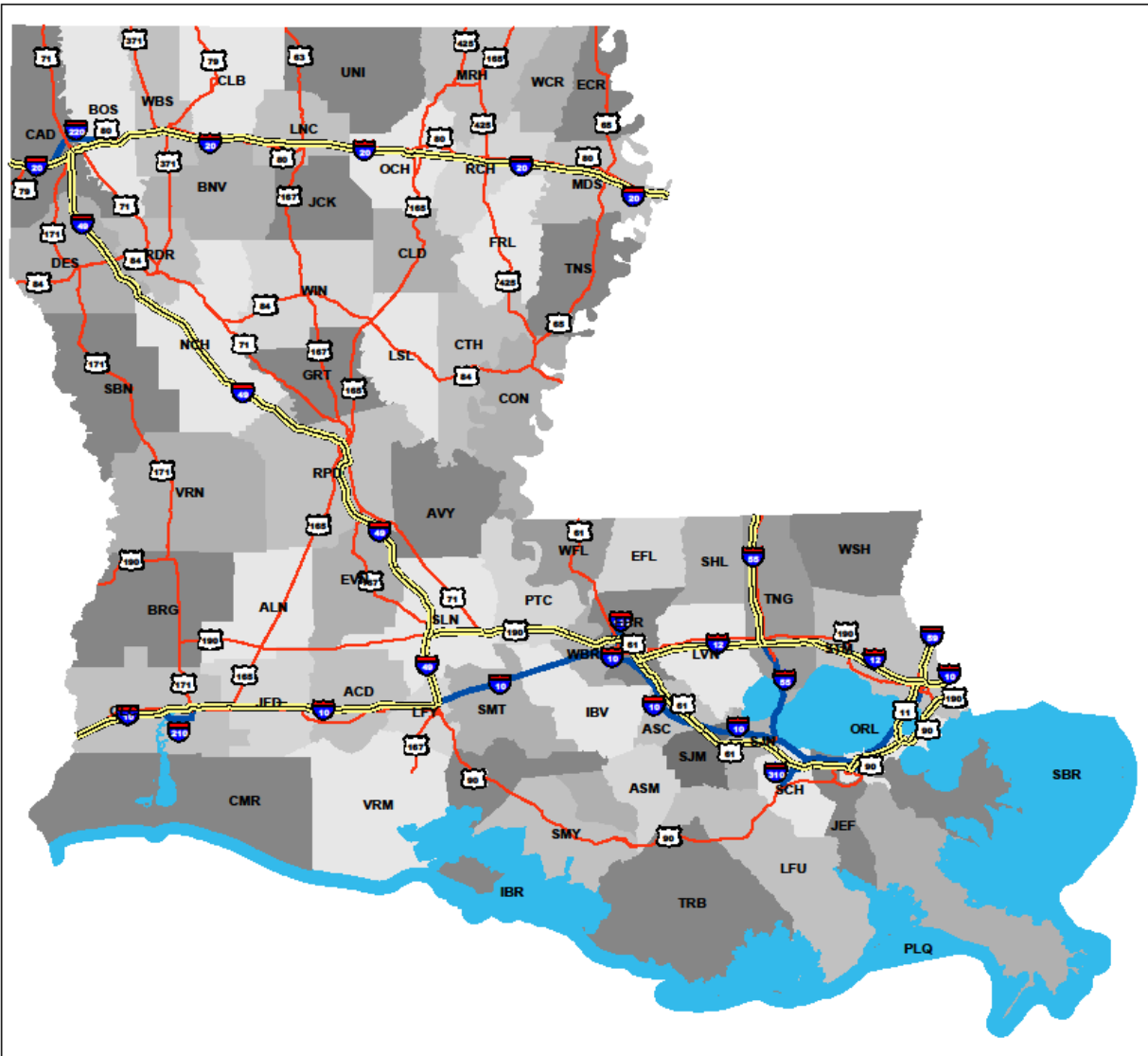
Louisiana  
Department of Transportation  
and Development

## Priority Winter Weather Routes

FOR UP TO DATE TRAFFIC AND ROAD CONDITIONS

1-888-ROAD-511 (1-888-762-3511)

<http://www.511LA.org>



### Legend

#### Priority Winter Weather Routes

— Designated Route†

#### LA Hwy System

##### Category

— Interstate

— US

† These highways are the primary routes kept open by LADOTD when severe winter weather operations are in effect. Other highways will be kept open as available materials, personnel, and weather conditions permit.

These routes may be closed due to vehicle crashes or other incidents, or when hazardous conditions arise. In that case, alternate routes will be designated and traffic will be rerouted by state and local officials.



# General

The Louisiana Department of Transportation and Development shall provide appropriate and timely response to winter weather conditions or incidents that have the potential to impact the state's transportation infrastructure.

Leave no doubt, regarding the plan!





# District

On call, or as dictated by local conditions, District XX personnel will respond to severe winter weather incidents. The response may be at the request of the Assistant District Administrator of Operations, District Administrator, Secretary of DOTD, or the Governor of Louisiana through the Governor's Office of Homeland Security and Emergency Preparedness.



# Districts Helping Other Districts

District XX shall be prepared to provide assistance to fellow DOTD Districts by collapsing of resources in response to District incidents including personnel, equipment, and/or materials.



# Other Emergency Response Partners

1. Louisiana State Police - (Contact, Phone #)
2. Parish OHSEP Region XX - (Contact, Phone #)
3. Parish LWIN radio channels (4 per parish)



# District Personnel

A. Personnel Reporting for Duty

B. General Safety Procedures for Personnel



# Communication and Documentation

A. Mobile Radios

B. Telephone and Electronic Communications

C. Route Inspections

D. Field Reports

E. District EOC Updates



# Mobile Radios

Mobile radios are the primary method of communication and cellular communications are the secondary means of communication between field personnel and the District EOC.







# Telephone & Electronic Communications

Landline and/or cellular communications are considered the primary methods used in support of mission tasking coordination efforts between outlying Parishes and the District EOC and between the District EOC and the DOTD HQ EOC. If the District should experience landline and/or cellular outages, the secondary means of communication will be push-to-talk portable radios.



# Route Inspections

1. Scouts should be deployed in advance of and during the event. Scouts shall document road and bridge conditions on assigned routes and report road and bridge conditions to the District EOC.

# Route Inspections

*continued*

2. Personnel should be deployed in advance of and during the event to monitor and record road and bridge temperatures throughout the District. This data can be used to correlate falling air and bridge deck temperatures and assist with determining the ideal time to begin salt applications.

# Field Reports

1. Each DOTD Parish will keep a record of all communications from scouts, law enforcement, and citizens regarding ice accumulation on bridges and roadways and/or downed trees. The date, time, and location of when a bridge or roadway has been salted, a roadway has been closed or opened, trees have been removed from roadways, etc. will be recorded.

# Field Reports

*continued*

2. The District EOC shall be notified each time salting operations have been completed on any bridge located on the mainline of the interstate.
3. Each Parish will keep a record of personnel strength, equipment availability, salt usage, and remaining salt inventory.
4. Additional information that should be provided to the District EOC consists of major power, water, or communications outages, support requests from GOHSEP or local authorities, and circumstances that negatively impact District response capabilities.



# District EOC Updates

1. A District EOC will be established. The personnel assigned to the EOC will monitor operations throughout the District. The District EOC will compile records regarding accomplishments throughout the District.





# District EOC Updates

*continued*

2. A summary of the records from the field reports above will be forwarded to the individual compiling the SITREP at the end of each shift, or more frequently if necessary, so District accomplishments can be submitted through the SITREP to the DOTD HQ EOC.



# Priority Routes, Roads and Bridges

A. Priority Routes

B. Roads

C. Bridges



# Priority Routes

1. Maintaining District XX priority routes will be the focus of District XX personnel. However, if environmental conditions make keeping a priority route open unrealistic, the District may close a priority route, evaluate and determine an alternate route, and re-focus resources to the alternate route.

# Priority Routes

*CONTINUED*

2. District XX personnel will attempt to conduct salting operations on as many routes as possible. However, the priority of effort is the interstate system, followed by US highways, followed by state highways.

# Roads

District personnel will concentrate their efforts on treating bridges. However, priority roadway sections have been identified for salt application as conditions warrant.



# Bridges

Some Districts has identified ramps and bridges that will be preemptively closed and ramps and bridges that should not be closed.





# Equipment, Resources and Manpower

- A. Equipment
- B. Resources
- C. Manpower (Teams)
- D. Route Maps

# Equipment

1. The District will maintain a listing of all salt spreaders in the District. This listing will include an up to date location of all spreaders as well as documentation regarding the availability of all spreaders.
2. Each salt spreader should have the spreader settings and vehicle speed to be maintained during salting operations noted on the spreader to optimize salt application rate.



# Resources

The District will maintain an inventory of all salt in the District. This inventory will include an up to date location of all salt as well as an up to date total regarding the amount of salt used during an event.

# Manpower (teams)

1. Each shift shall have employees preassigned to operate each salt spreader vehicle, operate each radio equipped follow vehicle, load salt, answer the radio and phones, maintain records of all phone and radio communications, monitor road and bridge conditions and temperatures, perform traffic control, maintain records for SITREP, and document and report road closures. For winter storms with downed trees, personnel shall be assigned to remove trees and debris from the roadway.

# Manpower (teams)

2. Each specific salt spreader route shall have personnel and equipment assigned to each shift.
3. Each employee is responsible for coordinating with their replacement during shift changes to ensure the employee reporting for duty is provided an update regarding current conditions and a status of equipment and material resources.

## Actions to date...

- **WINTER READINESS RESPONSE PLAN, 19-01 (Update based on “Best Practices”) In effect: 15 December 2019 – 31 March 2020**
- **WINTER RESPONSE LADOTD EQUIPMENT/MATERIALS INVENTORY AND ASSESSMENT**
- **Conduct, Promote and Attend key meetings**
  - **GOHSEP-LADOTD**
  - **LANG-LADOTD**
  - **Joint GOHSEP/LADOTD initiative (OEP’s-DOTD Directors)**

# Winter Readiness OPLAN In Summary...

- ***Establishes four Phases for all (9) DOTD Districts & HQ***
  - **Phase I Pre-mobilization (Assessment, Planning, Preparation, Alert)**
  - **Phase II Mobilization (movement and staging)**
  - **Phase III Operations (arrival and mission execution)**
  - **Phase IV Reconstitution (equipment & personnel recovery to home district and follow up maintenance)**
  - **Phase V Recovery (Reimbursement, as applicable and authorized)**

# Best Practices

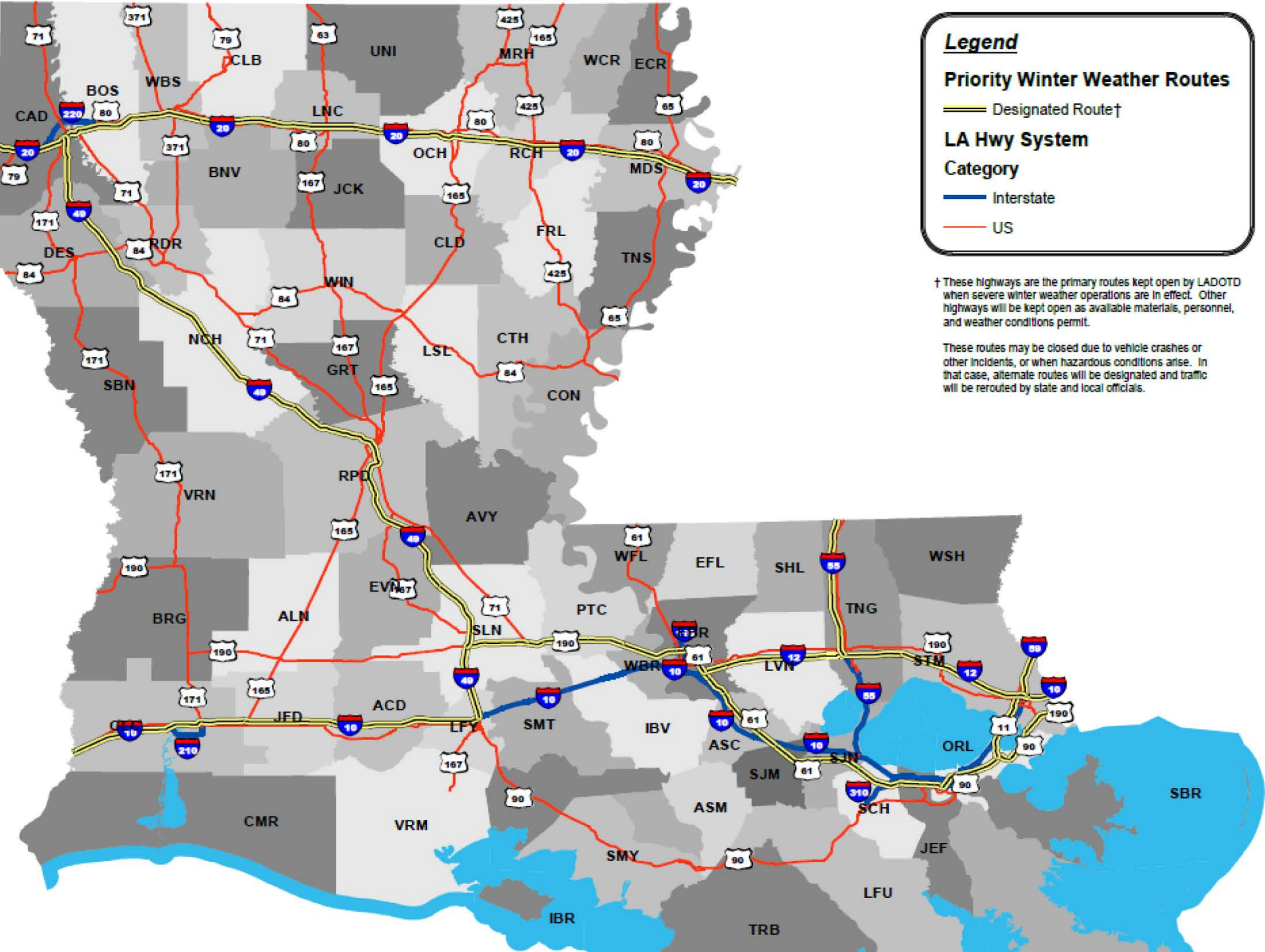
## “Resource flexibility/mobilization”

- ❖ **DOTD ESF-3 EOC became “center-point” for the coordination and mobilization of critical resources with all (9) DOTD Districts throughout all (5) winter weather events**
- ❖ **Mobilization of critical resources from unaffected DOTD Districts to majorly effected districts became priority. (Personnel, equipment & de-icing materials) \*Road conditions, weather forecasts are factors in mobilization.**

# **Best Practices “Route Prioritization”**











# Best Practices

## “Communication/Coordination”

***With...***

- ❖ **GOHSEP & DOTD ESF-3 EOC**
- ❖ **DOTD ESF-3 EOC and (9) DOTD District Operational staffs**
- ❖ **DOTD ESF-3 EOC & DOTD HQ Traffic Management Center/s**  
**\*Very dynamic road status environment!**
- ❖ **DOTD ESF-3 & ESF-13 (LSP) for route status de-confliction**



# Best Practices “Public Information”

***Message....STAY OFF OF THE ROADS!***

- ❖ **Use of Social Media (Facebook, Twitter etc.)**
- ❖ **Use of [www.511la.org](http://www.511la.org) (Road/Route closure information-LA DOT Traveler)**
- ❖ **Press releases in concert with, GOHSEP, Governor’s Staff (One message being sent to the public)**

# Lessons Learned

- ❖ **Refine and adjust current winter weather plans**
- ❖ **Bolster critical resources inventories at (9) DOTD Districts**
- ❖ **Promote and conduct DOTD-Parish OEP meetings in addition to meetings with state agency partners.**
- ❖ **Developed new DOTD Databased SITREP program towards maintaining situational awareness & ease of reporting for all involved. *\*Combats the 800 lb. "Information Monster" that surfaces.***

# ENGINEERING FLOWCHART

DOES IT MOVE?

NO

YES

SHOULD IT?

SHOULD IT?

NO

YES

YES

NO

NO

NO

PROBLEM

PROBLEM





# QUESTIONS

**SKIP BREEDEN**

**DIRECTOR OF EMERGENCY OPERATIONS**

**LaDOTD**

**[SKIP.BREEDEN@LA.GOV](mailto:SKIP.BREEDEN@LA.GOV)**

**(225) 379-1898**