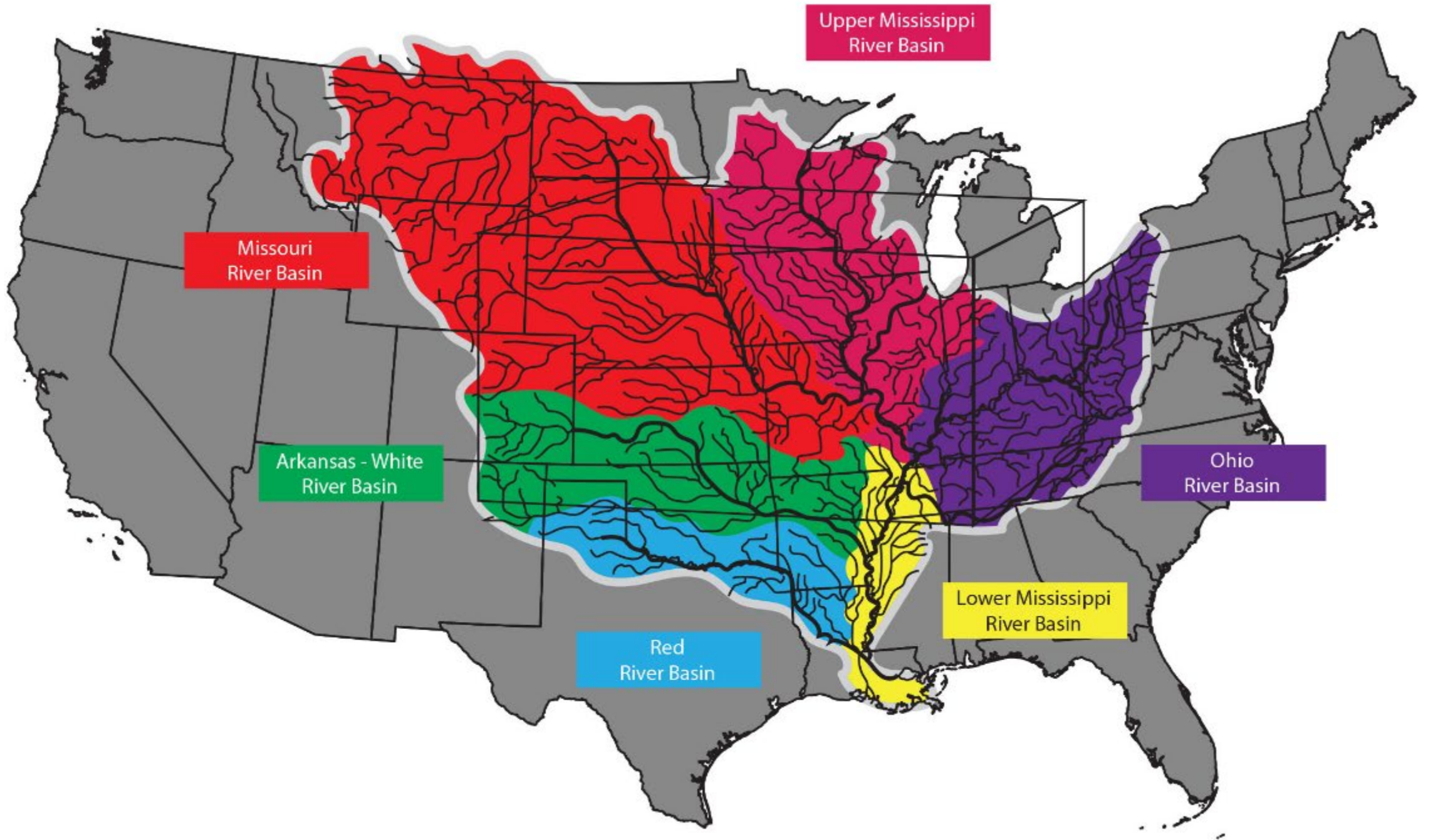


2019 Historic Flood Fight

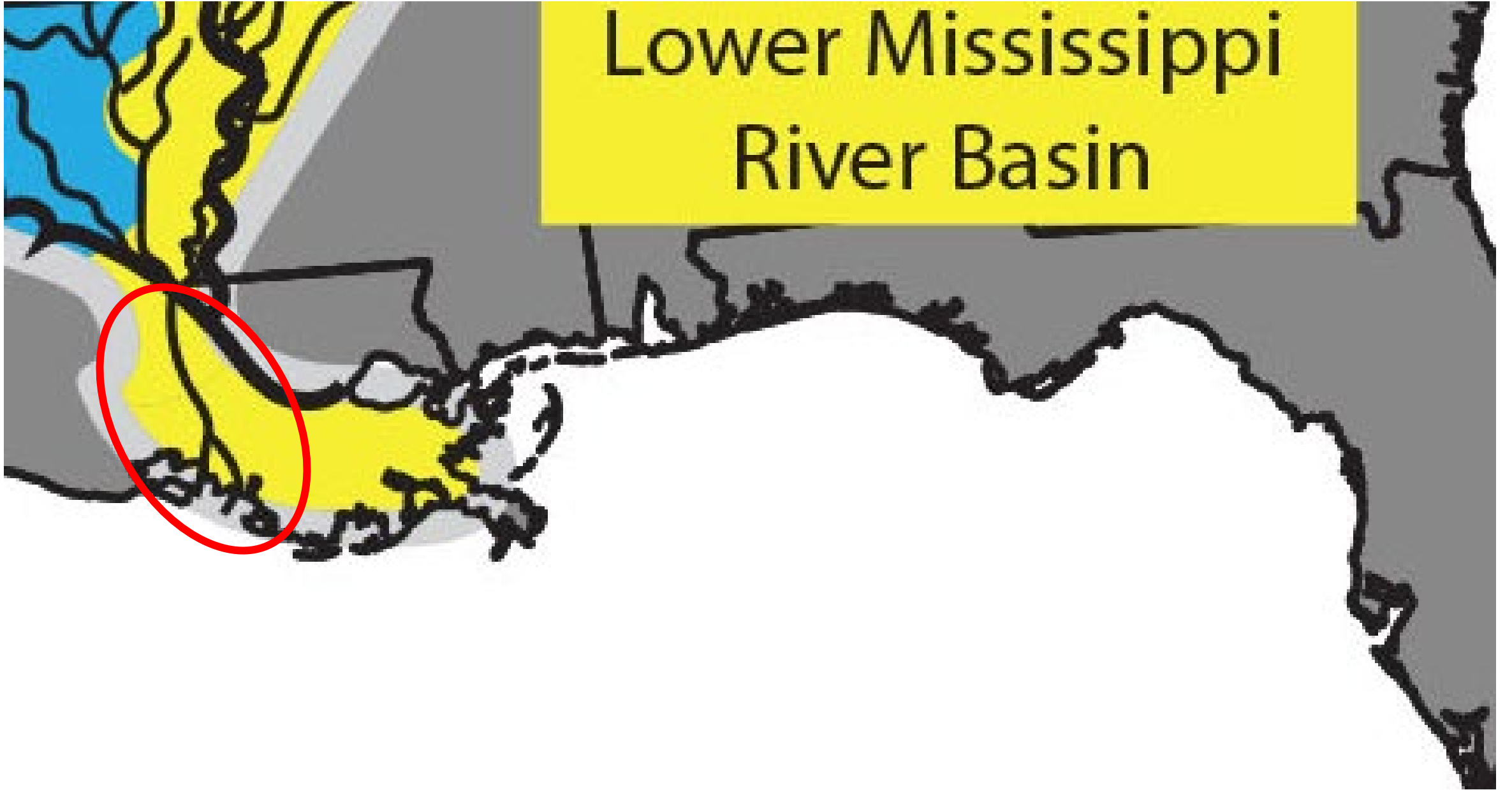


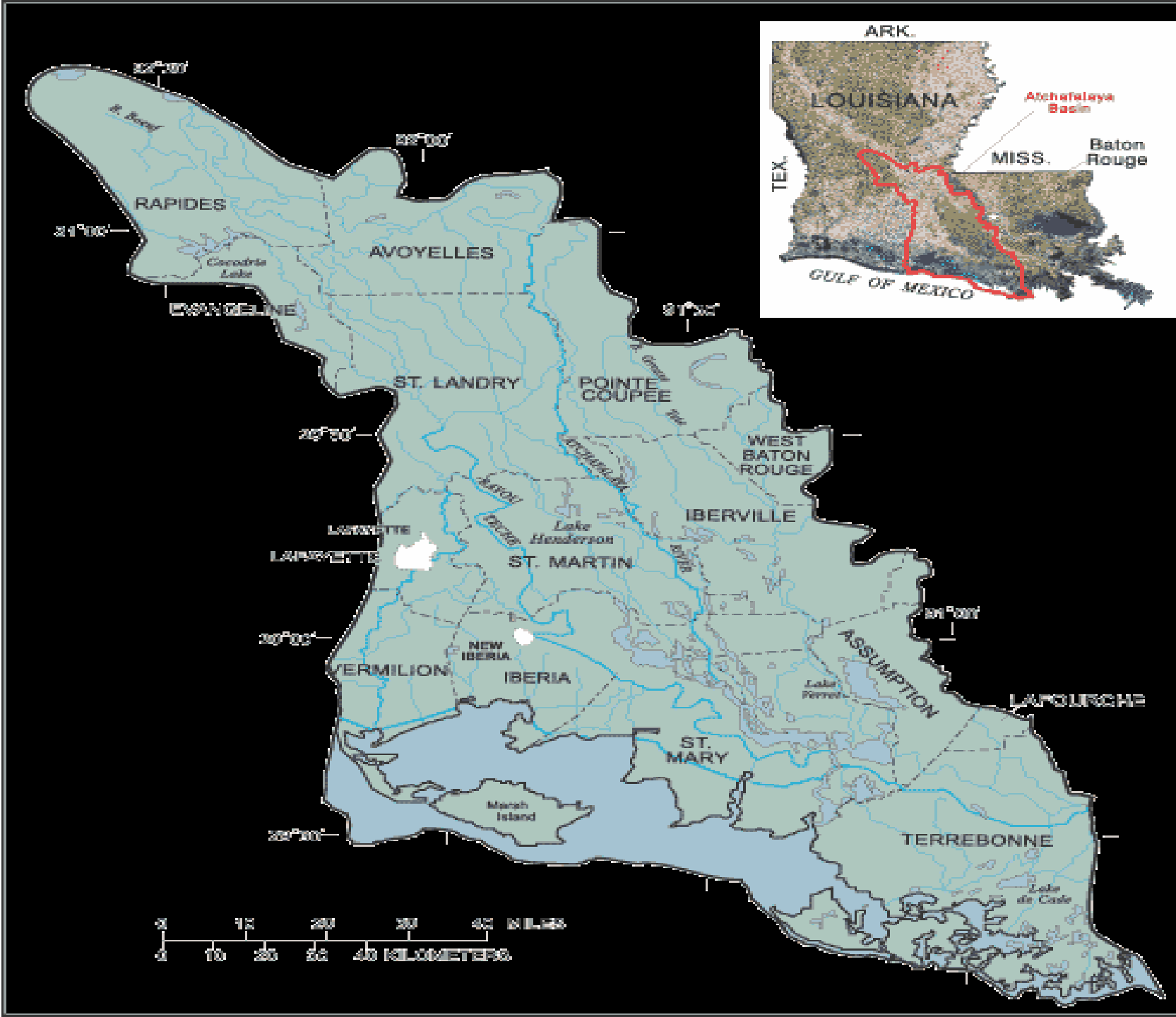
Gordon E. Dove
Parish President

David V. Rome, Jr.
Director of Public Works



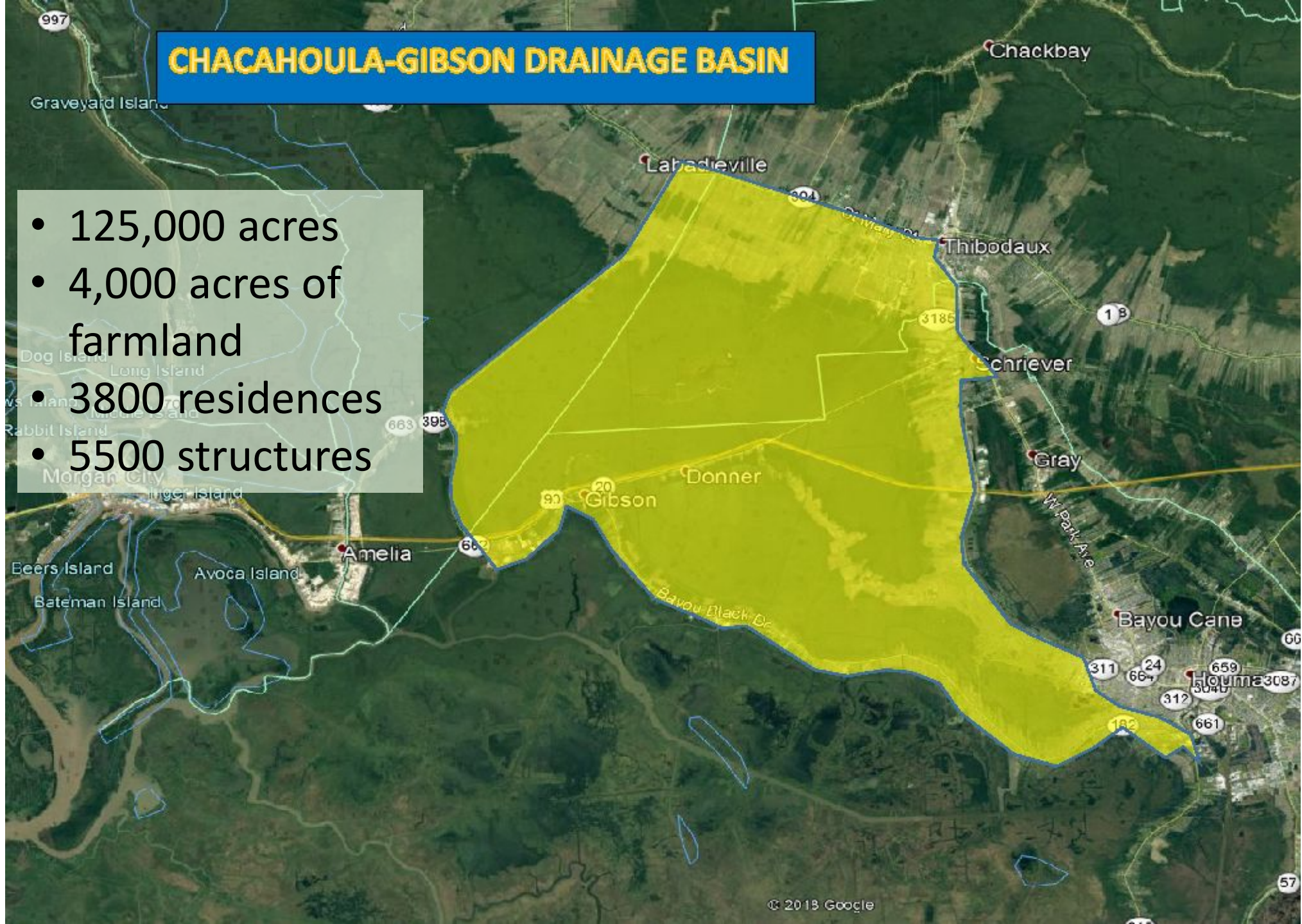
Lower Mississippi River Basin





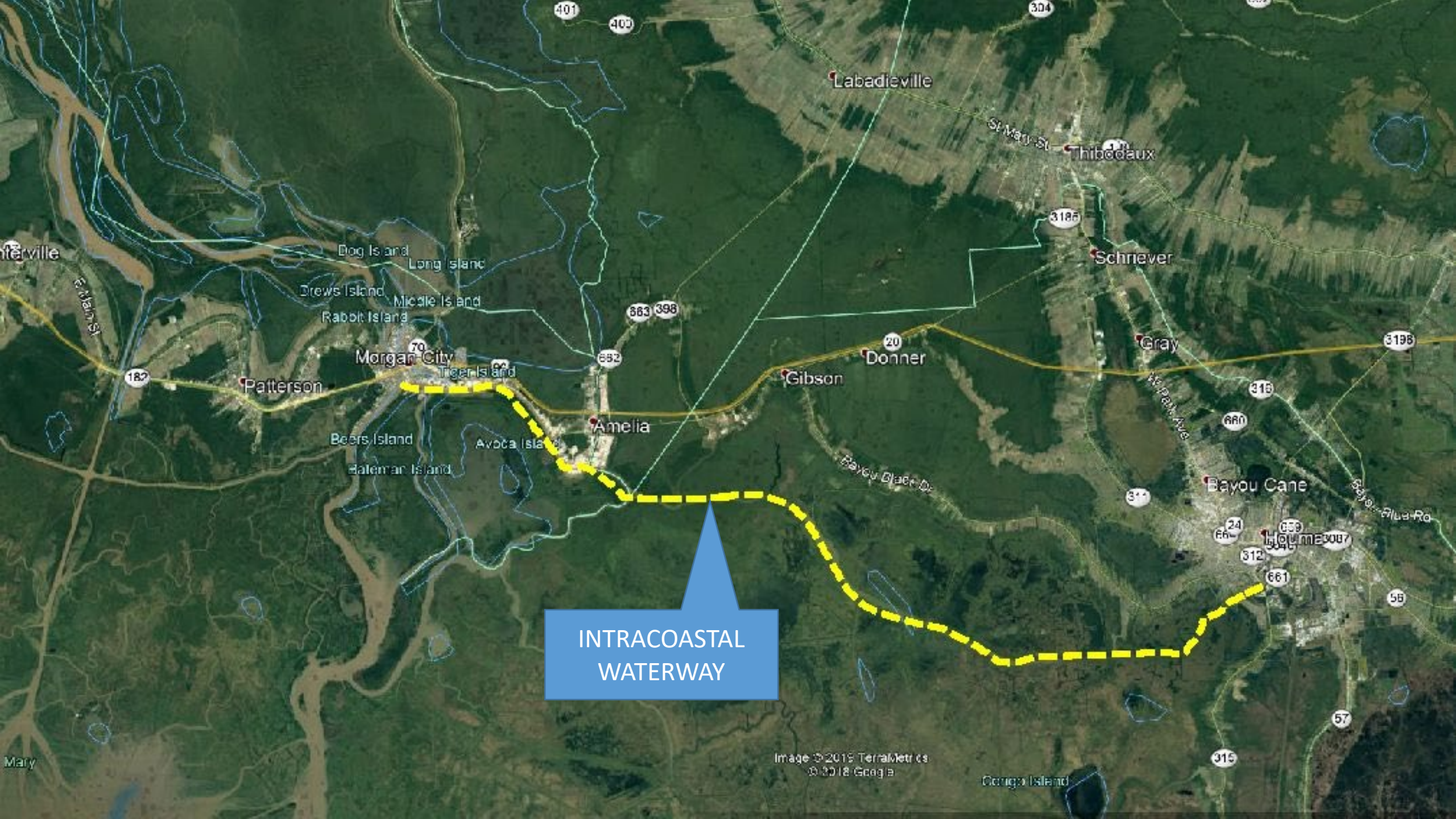
CHACAHOULA-GIBSON DRAINAGE BASIN

- 125,000 acres
- 4,000 acres of farmland
- 3800 residences
- 5500 structures

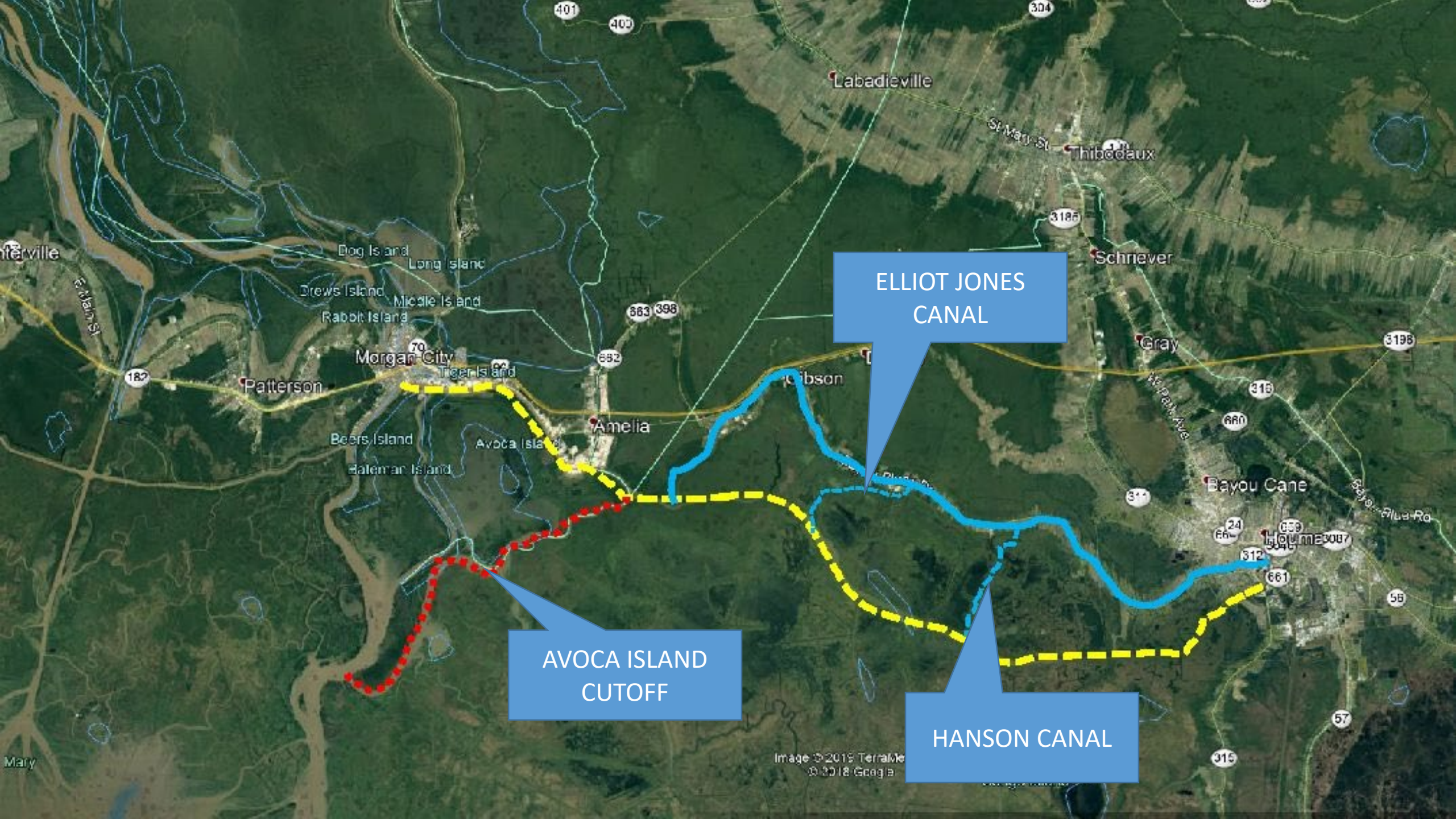




BAYOU BLACK



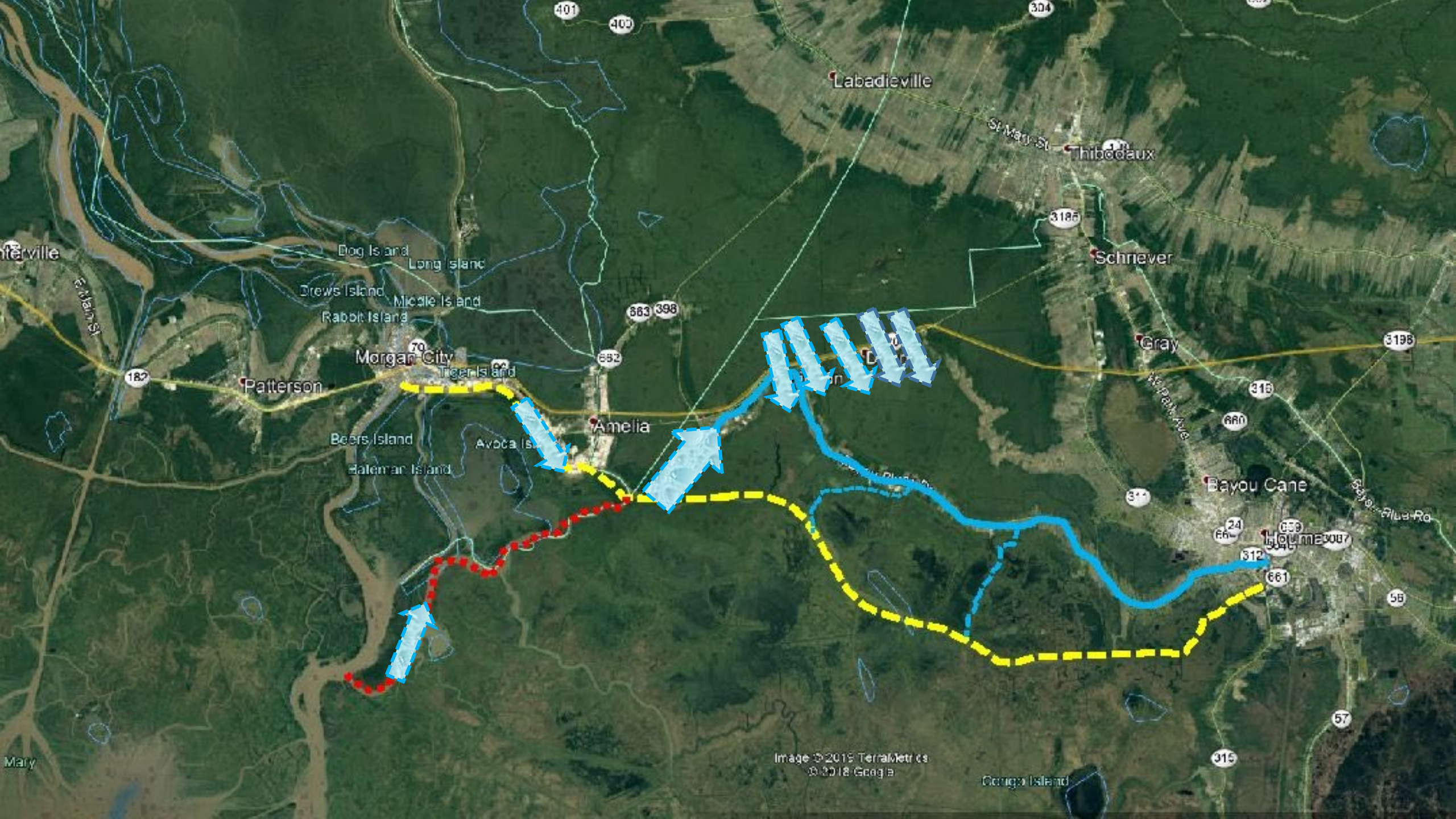
INTRACOASTAL
WATERWAY



ELLIOT JONES CANAL

AVOCA ISLAND CUTOFF

HANSON CANAL



Orange Island

CHACAHOULA-GIBSON DRAINAGE BASIN

**Average
water level
0.8'**

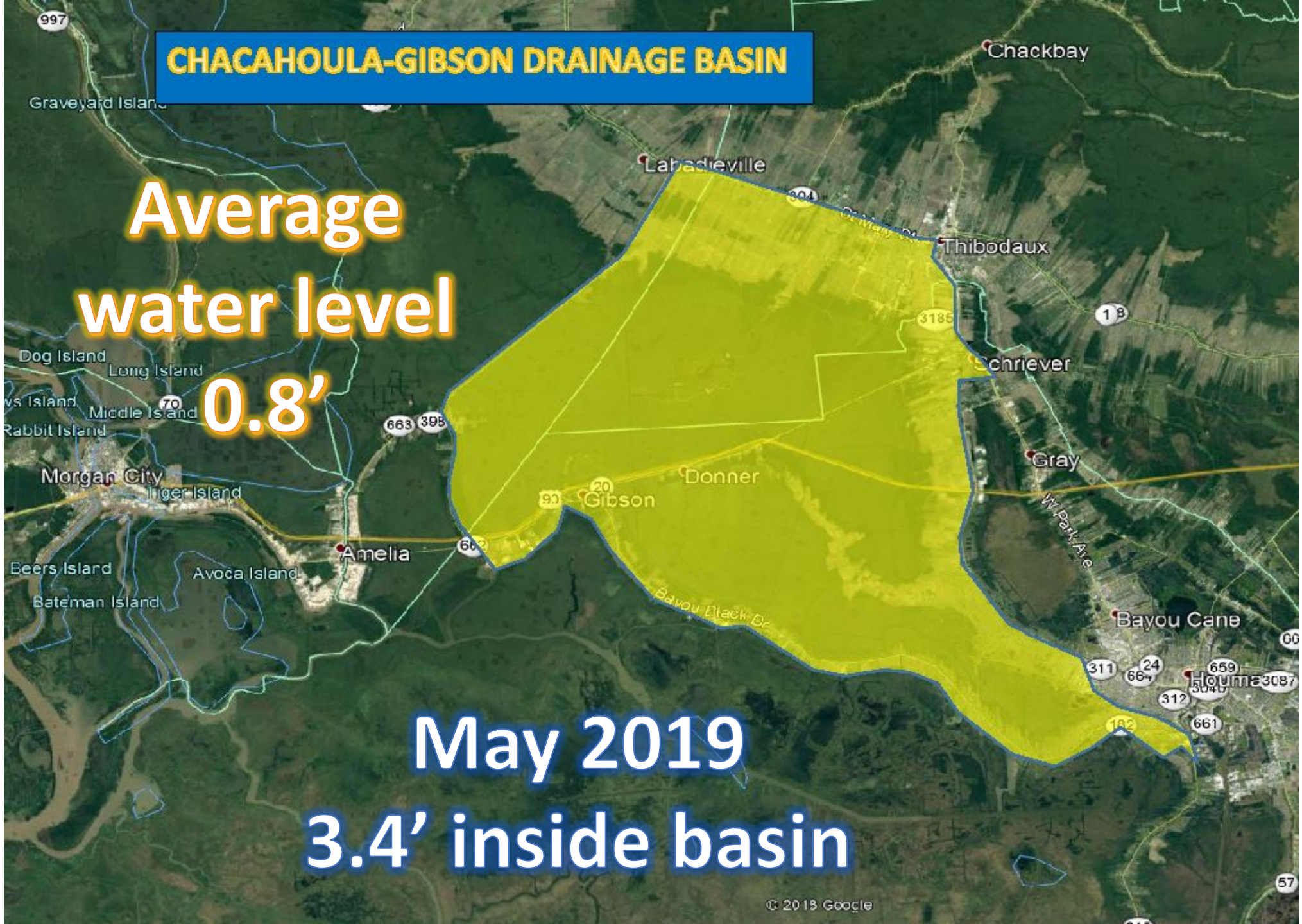
January 2019 = 1.4'

Parish emergency declared

CHACAHOULA-GIBSON DRAINAGE BASIN

Average
water level
0.8'

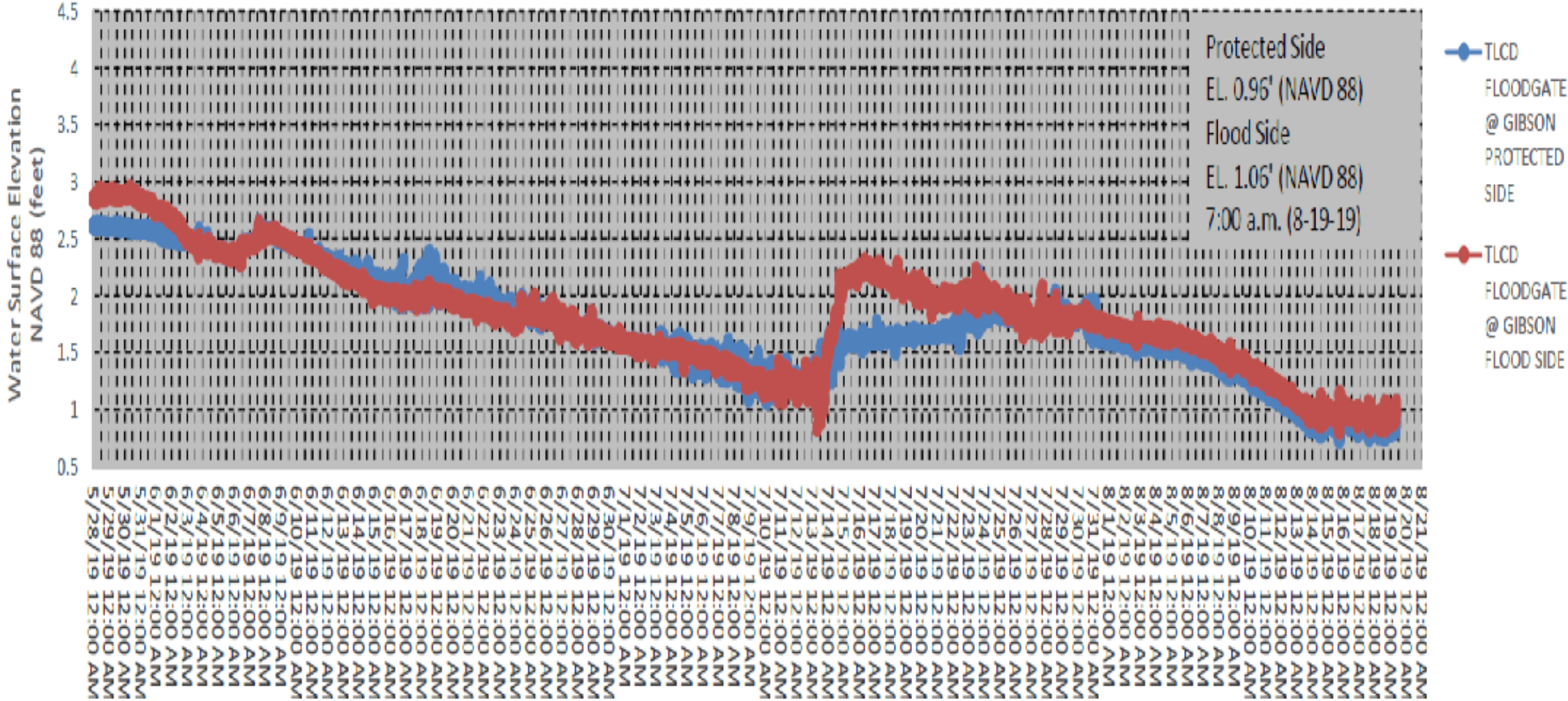
May 2019
3.4' inside basin



+60" of rain
Dec - July

3 rain events totaling +2" an hour

TLCD FLOODGATE @ GIBSON



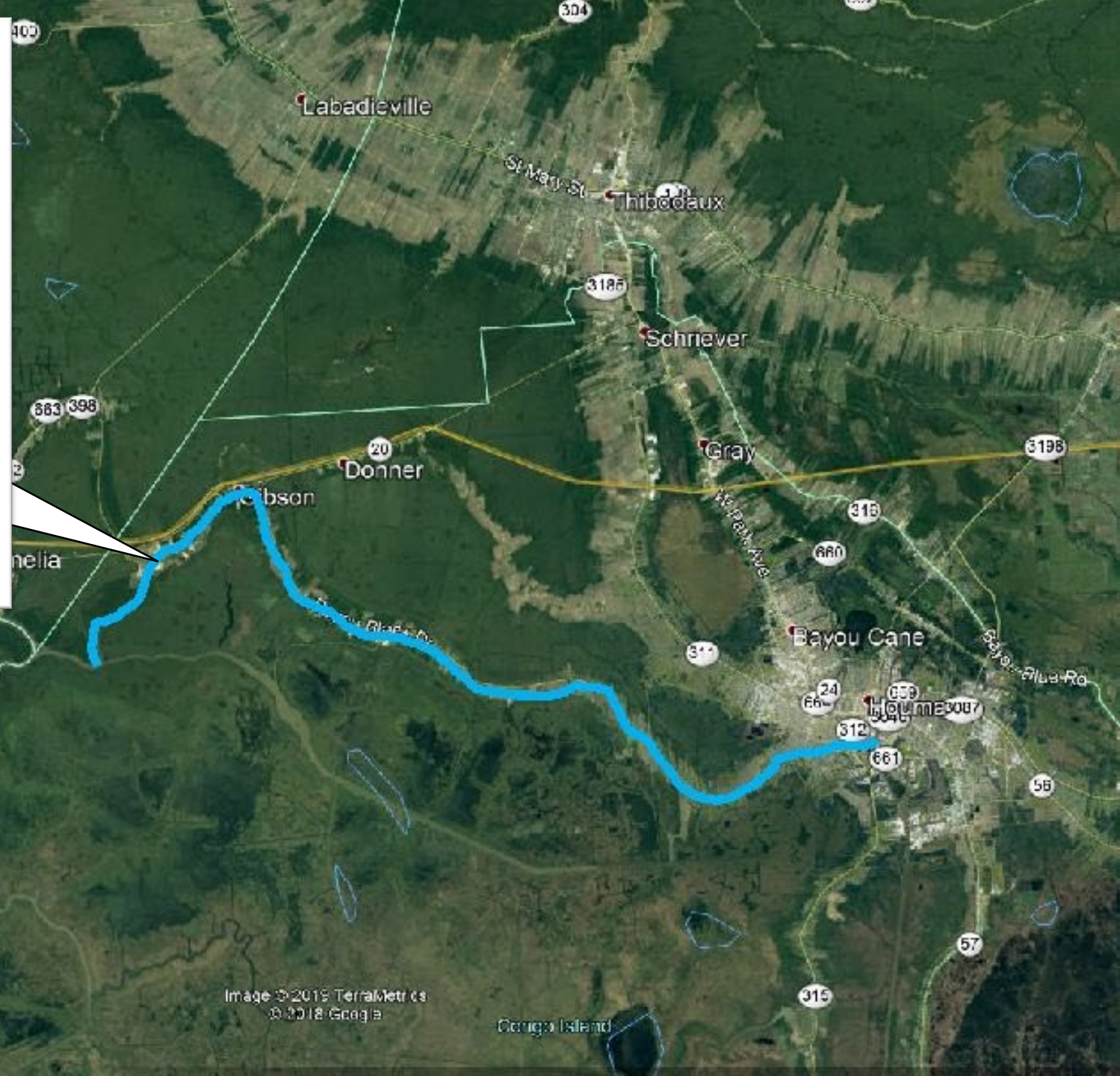
0'

+3'

+8'

+2'

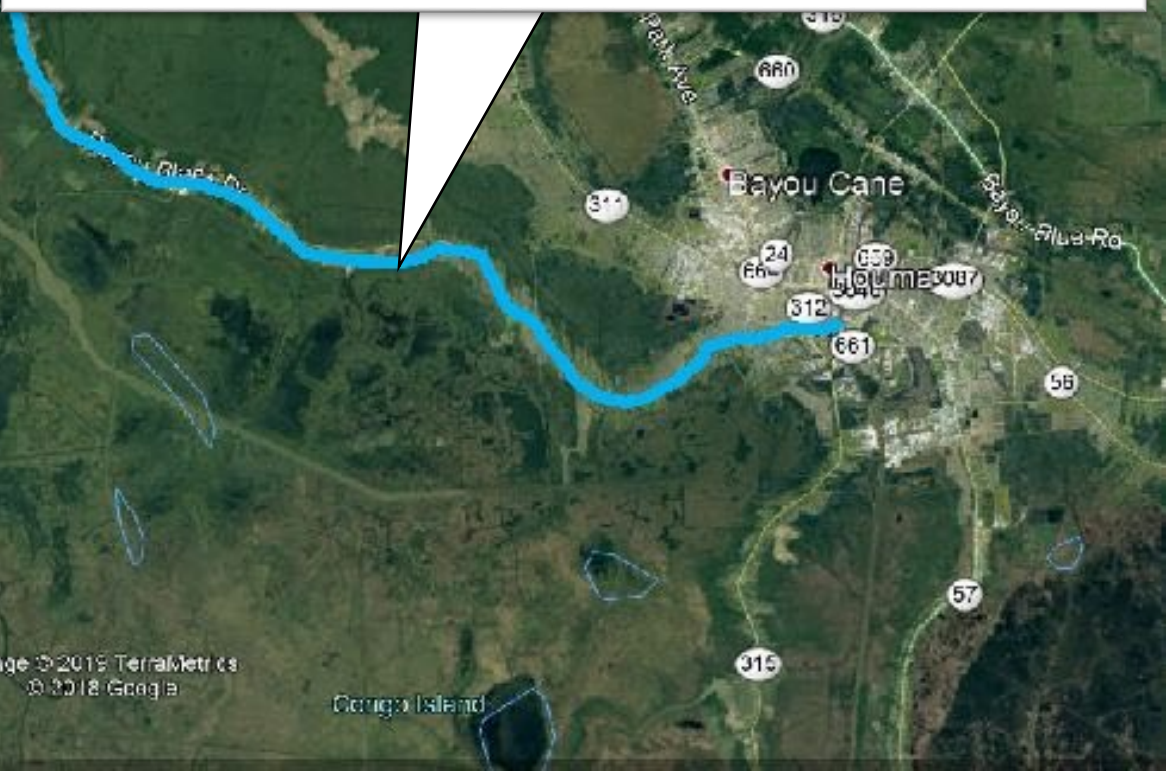




1.5 MILE INTERIM FLOOD PROTECTION LEVEE









6 Pumps:
(4) 24" Pumps
(2) 30" Pumps





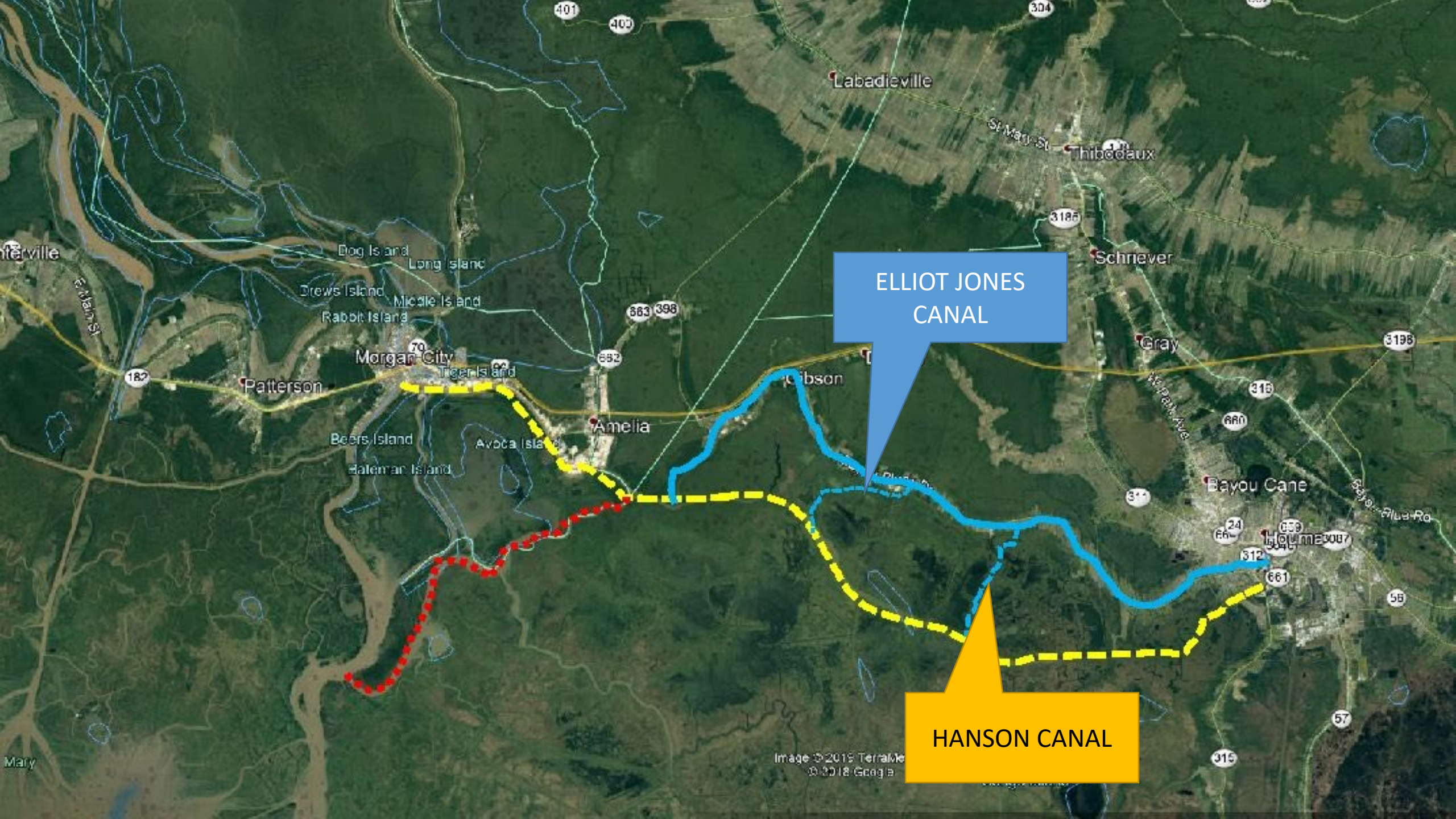




CHACAHOULA-GIBSON DRAINAGE BASIN

- 125,000 acres
- 4,000 acres of farmland
- 3800 residences
- 5500 structures

0 RESIDENCES
17 STRCUTURES



ELLIOT JONES
CANAL

HANSON CANAL



UNDER CONSTRUCTION

ESTIMATED COMPLETION: 2019

**TOTALLY
FUNDED BY:**



**Parish President
Gordon E. Dove**

**Steve Trosclair
Council Chairman**

**Arlanda Williams
District 2**

**Darrin Guidry Al Marmande
District 6 District 7**

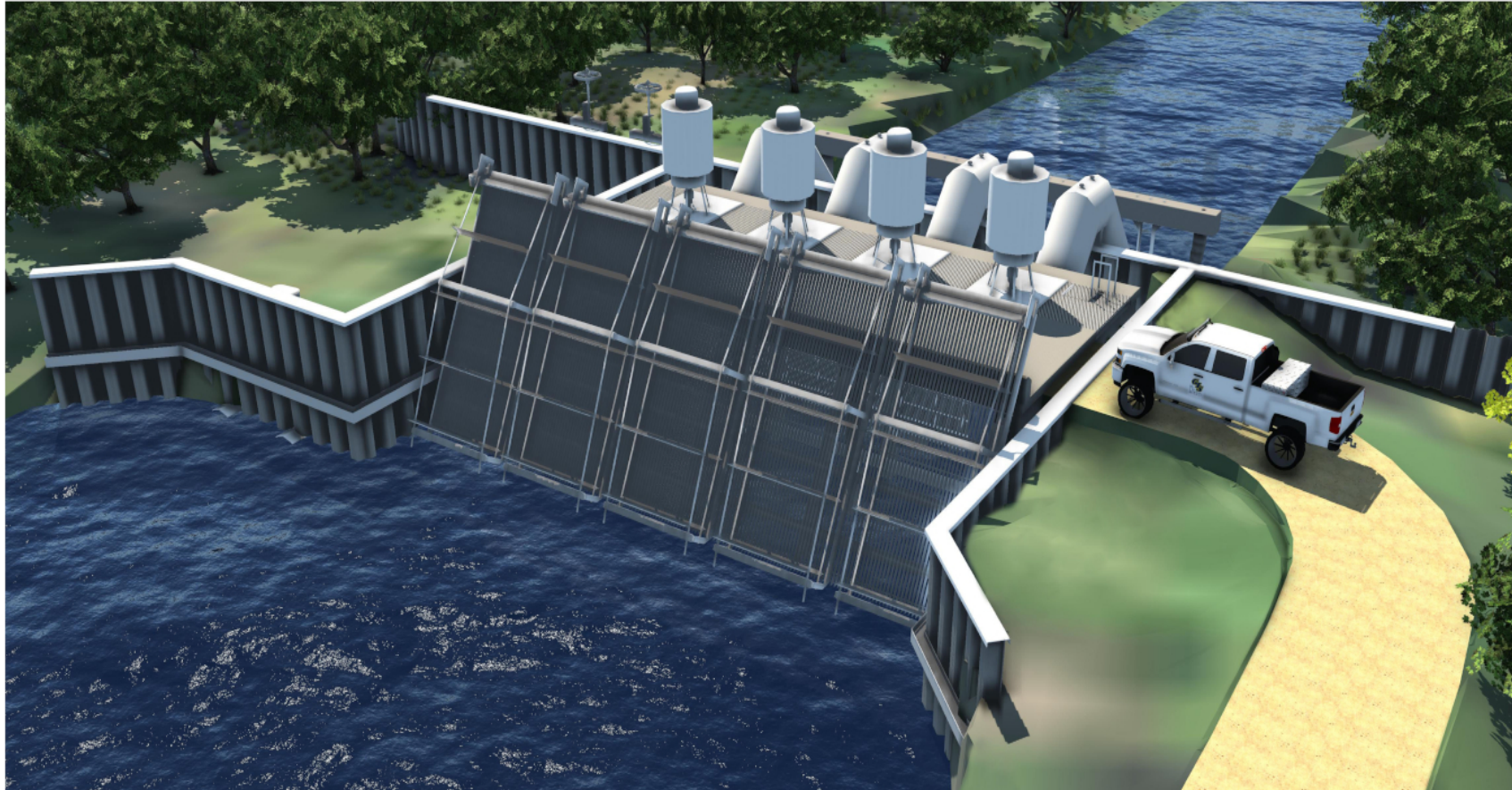
**John Navy
District 1**

**Gerald Michel
District 3**

**Scotty Dryden
District 4**

**Christa Duplantis-Prather
District 5**

**Dirk Guidry
District 8**



ENGINEERING LLC

**1,000 CFS
PUMP STATION**

4 - 60" PUMPS

**900 H.P.
ELECTRIC MOTORS**

**4000 KW
BACKUP GENERATORS**

**1,000,000 GALLONS
EVERY 2 MINUTES
15 SECONDS**

HANSON CANAL PUMP STATION

"Chacahoula Basin"

Cost: \$14,690,615.00



04/05/2019 09:49



LIFT HERE

DO NOT LIFT

ATTENTION

TYPE 4 - 3000000
FACTORY ORDER NO. 101
DUGGINS-J-CORPORATION
P.O. BOX 10000, JAL

HANDLE

JNTAINE

04/25/2019 08:09

ELLIOT JONES PUMP STATION

Will Pump Chacahoula Basin
Governor Publically Announced
(CPRA - \$13 Million)

Gibson – Bayou Black Area
Pump Station Capacity
1,000 CFS

4 – 60” Electric Pumps

Construction Start Date 2019

Construction Cost
Approx. \$14 M

1 Million Gallons every
2 Minutes, 15 Seconds

Identical to Hanson

Engineering & Permitting
Started 2017



ENGINEERING LLC



BAYOU BLACK PUMP STATION



Permitting Phase
Geraldine Road - Gibson



CHACAHOULA-GIBSON DRAINAGE BASIN

80,000,000
gallons an hour