



# A PRESENTATION TO LPESA MAY 27, 2021

Will Smith — Southeast Region Manager — Acrow Bridge

**ACROW**



# OVERVIEW

---

- About Acrow
- About Acrow Bridges
- Installation
- Acrow 700XS®
- Applications
- Questions



# ABOUT ACROW

---

- Established in 1951
- World leader in design, engineering and manufacture of prefabricated modular steel bridges
- Headquartered in Parsippany, NJ
- Offices across USA, Canada, Italy and UK
- Manufacturing Facilities in Milton, PA, and Lydney, Gloucestershire, UK
- Staging yards in Lafayette, NJ, Eden NC and Centralia, WA
- Proprietary steel technology derived from the Bailey Bridge
- 300+ employees

**ACROW**



## ACROW FACILITY

- Milton Steel Co.
- 21 acres
- Milton, PA
- Capacity: 25,000 tons of bridging per year
- 95 team members operating over 3 shifts

## EQUIPMENT

- 8 robot cells - 26 robots
- Automated vertical and horizontal drill tables
- CNC Plasma cutting and drilling table
- CNC Drill and robotic plasma beam line





# QUALITY ASSURANCE

---

**ISO 9001**  
CERTIFIED



**ACROW**



# FEATURES + BENEFITS

---

- Made in the USA from high-quality, high-strength, 100% American steel
- Easily customizable solutions to desired length, width and strength
- Precision-engineered and full-scale tested for safety and durability
- Hot-dip galvanized to eliminate corrosion and minimize maintenance
- Rapid installation with minimal labor and equipment
- Installed with support from an experienced onsite technician

**ACROW**



# **BRIDGE SPECIFICATIONS & DESIGN CRITERIA**

## **BRIDGE**

- Designed to meet AASHTO ASD, LRFD, ASD, HS-20, HS-25, HL-93 for temporary bridges or applicable State (including LADV11) and permit loads
- Bridge roadway widths (12' through 42')
- Simple span bridges (10' through 300')
- Pedestrian bridges (5', 8', 12' wide - lengths to 200')
- Single or multiple span (Length unlimited)

## **BRIDGE DECK**

- Steel orthotropic roadway deck units
- Driving surface options (asphalt and epoxy aggregate anti-skid)

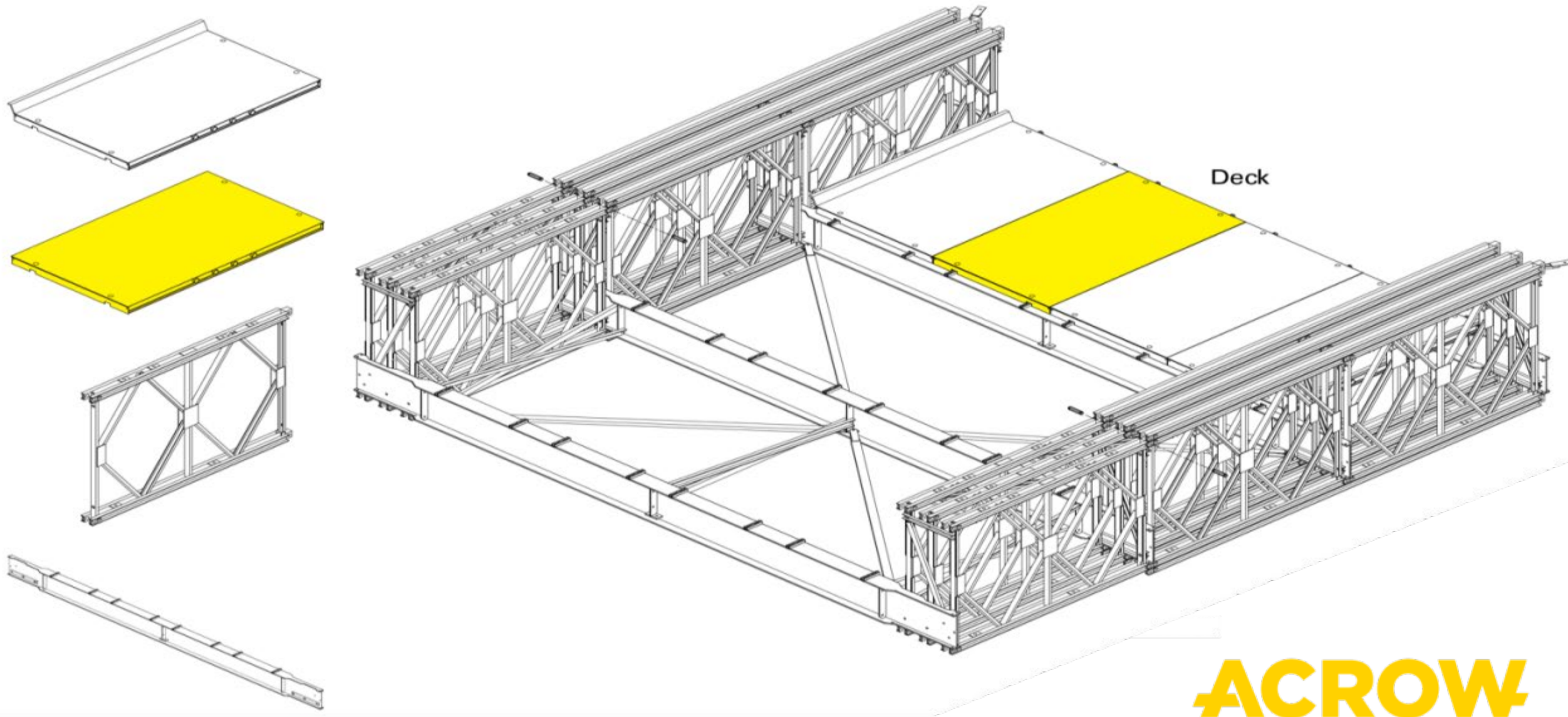


# ACROW 700XS<sup>®</sup>

---



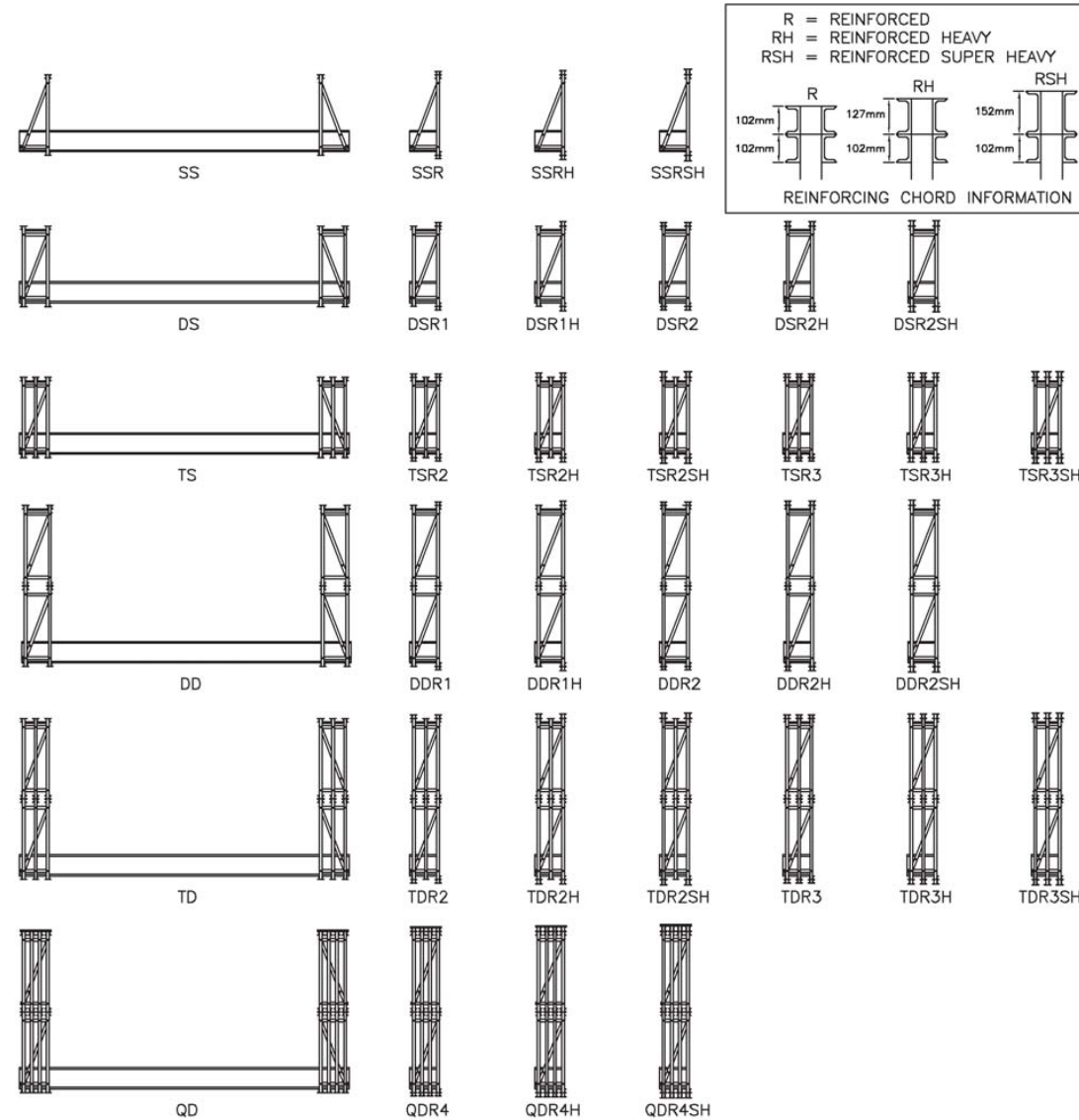
# ACROW 700XS<sup>®</sup>



**ACROW**



## TRUSS CONFIGURATIONS



# INSTALLATION

---

- Cantilevered
- Crane-Assisted Cantilevered
- Crane Lift-in





# CANTILEVERED

---



# ACROW



**CRANE-ASSISTED**

---

**ACROW**





# CRANE LIFT-IN

---



**ACROW**



**VEHICULAR**



**BEAM**



**PEDESTRIAN**



**DETOUR RENTAL**



**MOVABLE**



**SHORING**



**EMERGENCY**



**OTHER APPLICATIONS**



**ACROW**



# VEHICULAR BRIDGES

---

- Pre-engineered modular solutions
- Length, width and strength are easily customizable
- Conveniently transported
- Fast assembly and installation
- Safe, reliable, durable



**ACROW**



## PERMANENT VEHICULAR BRIDGE

Terrebonne Parish LA  
Buquet Street, Houma, LA

- Length: 90'
- Width: 24'
- 5' cantilevered sidewalk
- Design Load: HL-93
- Epoxy aggregate non-skid





## PERMANENT VEHICULAR BRIDGE

Terrebonne Parish LA

Bayou Black Drive, Gibson, LA

- Length: 70'
- Width: 24'
- Design Load: HL-93
- Epoxy aggregate non-skid





## PERMANENT VEHICULAR BRIDGE

Folsom, NJ

Hospitality Road

- Length: 60'
- Width: 13' 7"
- Design Load: HL-93





## **CAMBERED VEHICULAR BRIDGE**

Division St., Chicago, IL

Cambered main span  
required to match original  
profile and provide clearance  
for water traffic

Decorative pedestrian railing

Expected use is 15 + Years

- Length: 3 spans (50', 140', 50')
- Width: 36'
- Design Load: HL-93





# BEAM BRIDGES

---

- Designed for short-span applications
- No field welding, cutting or fabrication
- Spans: 25', 35', 45'
- Width: 6' to unlimited
- Design Loads: HS-20, HS-25, HL-93, Construction Access
- Decks ship with factory-applied non-skid
- Multiple bridge rail options
- Installed within hours using minimal equipment and labor
- Can be delivered complete on site, and lifted directly onto bridge abutments



**ACROW**







## BEAM BRIDGE

Hawaii

- Length: 45'
- Width: 36'
- Loading: HL-93





# PEDESTRIAN BRIDGES

---

- Quick and easy installation
- Available in weathering steel for improved aesthetics
- Supplied with a choice of timber, steel or reinforced concrete deck
- Hot-dip galvanized with minimal maintenance requirements



**ACROW**

## PEDESTRIAN BRIDGE

Honolulu, HI

Halona Street

- Length: 110'
- Width: 6' Panel Bridge
- Design Load: 95 PSF





## PEDESTRIAN BRIDGE HAMILTON

Ideal application for modular bridges due to limited site access in remote location

1 mile walk into the site

- Length: 260' single span
- Width: 8'
- Design Load: Pedestrian and pick-up trucks





## **PERMANENT PEDESTRIAN BRIDGE**

West Penn Rail Trail in  
Blairsville, PA

Ideal application for modular  
bridges due to limited site  
access in remote location

- Length: 4 x 150'  
continuous spans
- Width: 8'
- Design Load: Pedestrian





# DETOUR RENTAL

---

- LADOTd a big user of Acrow detour bridging
- Accelerated Bridge Construction
- Economical rental solutions
- Safe detours around construction sites
- Supplied direct from inventory strategically staged across North America
- Compliant with AASHTO and state design codes
- Increased safety for motorists & construction crews
- Rapidly installed in days
- Expert site support services as required



**ACROW**



## DETOUR BRIDGE SARASOTA, FL

I-75 NB/SB

Heavily-travelled interstate traffic

In place for 2 years

2% crown, Asphalt with paving fabric to help asphalt adhere to deck.

- Length: 280' two-span
- Width: 42' (widest yet in US)
- Design Load: HL-93





## DETOUR BRIDGE

LA-66 West Feliciana Parish,  
Louisiana

Epoxy aggregate non-skid

- Length: 720' multi-span bridge
- Width: 24'
- Design Load: HL-93
- Longest launch of an Acrow bridge to date





## ARSENAL ROAD WATERTOWN, NY

Epoxy/aggregate non-skid  
decks

In place for 2 winters

- Length: Twin 180' bridges
- Width: 24' wide each
- Design Load: HL-93





## **I-10 SOUTH OF TWIN SPANS LOUISIANA**

USACE Hurricane/Levee  
Improvement Project

Epoxy/aggregate non-skid  
decks

- Length: 4 x 100' spans
- Width: 36' (3 x 12' lanes)
- Design Load: HL-93
- TL-4 Guard Rail





# MOVABLE BRIDGES

---

- Innovative solutions to maintain vehicular and vessel traffic
- Deep expertise in structural, mechanical and electrical engineering
- Expert in complex bascule and vertical lift bridge solutions
- Modular, interchangeable components
- Full highway load-carrying capability to support both standard and heavy-duty applications
- On-site Acrow technicians to support installation, start-up and commissioning



**ACROW**



## **MOVABLE BRIDGE WEST PALM BEACH, FL**

Bridge Opening: Every 30 minutes

Included design and supply of bridge, mechanical, electrical and control systems

- Towers: 75'
- 170' cambered lift span
- 30' 2-lane roadway
- 5' cantilevered sidewalk
- Live Load: AASHTO HL-93





## MOVABLE BRIDGE

Martha's Vineyard, MA

“Brute Force” Bascule/draw bridge

Acrow provided the approaches and the bascule

Full package, including mechanical, electrical and control systems

- Spans: 80' / 60' / 90'
- Width: 2 Lane – 24'
- Design Load: HS-20





# SHORING

---

- Towers and Superprop® shoring systems for a wide range of vertical, horizontal or knee-bracing applications
- Pre-engineered using standard modular components - installed within hours
- Made of high-strength steel, offering versatility and safety
- Expertly designed to suit specific project requirements
- Supplied direct from inventory
- Delivered with expert site support
- Cost-effective rental options available



**ACROW**



## TOWER SYSTEM

Acrow towers are designed using Acrow Bridge Panels with structural steel crib tops to provide a system of simplistic design.

Can support up to 400+ Kips





## SHORING SYSTEMS

A single Superprop® Shore, assembled from Acrow bridge components can support up to 200 tons per prop at a shoring height of 25'

Configured for infinite height options utilizing adjustable screw assemblies





## SHORING SYSTEMS

RT 70 Denver, CO

Single Superprop® Shores





# EMERGENCY

---

- Rapid Response Team to deliver restored infrastructure
- Proven in humanitarian aid and disaster-relief applications
- Bridging in-stock, ready to deliver anywhere in the world
- Length, width and load design as required
- Rapidly assembled and installed
- Easily uninstalled to facilitate safe, rapid re-deployment
- Suitable for use in seismic areas



**ACROW**



## EMERGENCY

US 85. Lusk, WY

3 weeks before the 75<sup>th</sup>  
Anniversary of the Sturgis, SD  
motorcycle rally this major  
artery from I-25 and I-80 to  
Sturgis was shut down





## EMERGENCY FIXED IN TIME

US 85. Lusk, WY

Built with WYDOT owned Acrow bridging, WYDOT crews and Contractor + Acrow support

- Length: 200' clear span
- Width: 2 Lane – 24'
- Design Load: HL-93





## **EMERGENCY I-95 BRIDGEPORT, CT**

Tanker truck fire shut down I-95

Triple Single Reinforced  
(TSR3)

- Length: 80'
- Width: 36'





## EMERGENCY

Wantagh State Parkway

Long Island, NY

Material is now in NY State DOT inventory for emergencies

- Length: Twin multi-span bridges
- Width: 2 Lane – 24'
- Design Load: HS-25





## **EMERGENCY SKAGIT RIVER, WA**

### I-5 Bridge Collapse

Acrow provided 2x 2-lane bridges within a week

Start to finish and opened in 15 days

- Length: 2 spans, each 160'
- Width: 2 Lane – 24'
- Design Load: HL-93





## **EMERGENCY HURRICANE IVAN FLORIDA**

I-10 bridge over Pensacola Bay  
(built using FDOT-owned Acrow  
bridging inventory)

- Almost 1 mile of Acrow 300  
series used





## **EMERGENCY HURRICANE KATRINA**

New Orleans, LA

Most aggressive bridge project at the time (2005) – supplied in 3 months!

Existing spans were 65ft.

Water damaged piers and we filled in with Acrow Bridge

- Length: 4,220'
- Width: 2 Lane – 24'
- Design Load: HS-25





## **EMERGENCY HURRICANE IRENE ROCHESTER, VT**

As a result of Hurricane Irene,  
in addition to VT, Acrow  
assisted in projects in Eastern  
NY and New Hampshire







**BEFORE**



**AFTER**





**BEFORE**



**AFTER**





**BEFORE**



**AFTER**





**BEFORE**



**AFTER**



## EMERGENCY WORLD TRADE CENTER 9/11

Worker access sidewalk and  
five support piers.

Epoxy deck.

Cantilevered walkway.

Was utilized for several years.

- Length: 460' long
- Width: 30' wide

Photo shows final 80 ton  
column transported between  
honor guard.





# OTHER APPLICATIONS

---

- Gantry & straddle bent systems
- Pile & utility bridges
- Barge bridges
- Bridge rehabilitation
- Jetties
- Ramps
- Also....Super-elevated roadways



**ACROW**



## OTHER APPLICATIONS

Straddle Bents & gantry





## PIPE & UTILITY BRIDGE

Utilized a bridge to carry gas pipes

- Length: 140'
- Width: 8'
- Design Load: Pipe loading





## INDUSTRIAL PIPE BRIDGING AND RACKS

Utilized footwalk bearers  
cantilevered off side of bridge  
to carry water line.





## INDUSTRIAL PIPE RACKING AND BRIDGING

Acrow 700XS specially designed to bridge to carry two levels of pipes for bulk liquids from tankers to storage tank farm.

- Length: 780' multi-span
- Width: 24'
- Design Load: Special loading
- 6' wide footwalk included





## **GEORGE TRYON BRIDGE REHABILITATION**

Northern CA, South of  
Oregon Border (over the  
South Fork of the Smith  
River)

Constructed in 1948

2 Lane 206' Steel Arch Bridge  
with 140' mid-span

Eliminated LDs and traffic  
problems





## ROLL-ON/ROLL-OFF RAMPS, LAKE CHAMPLAIN, NY

Land bearings - bridge is  
pinned to the abutment

Ramps for temporary ferry  
terminal

- Length: 2 x 130' spans
- Width: 24' each
- Design Load: HS-25



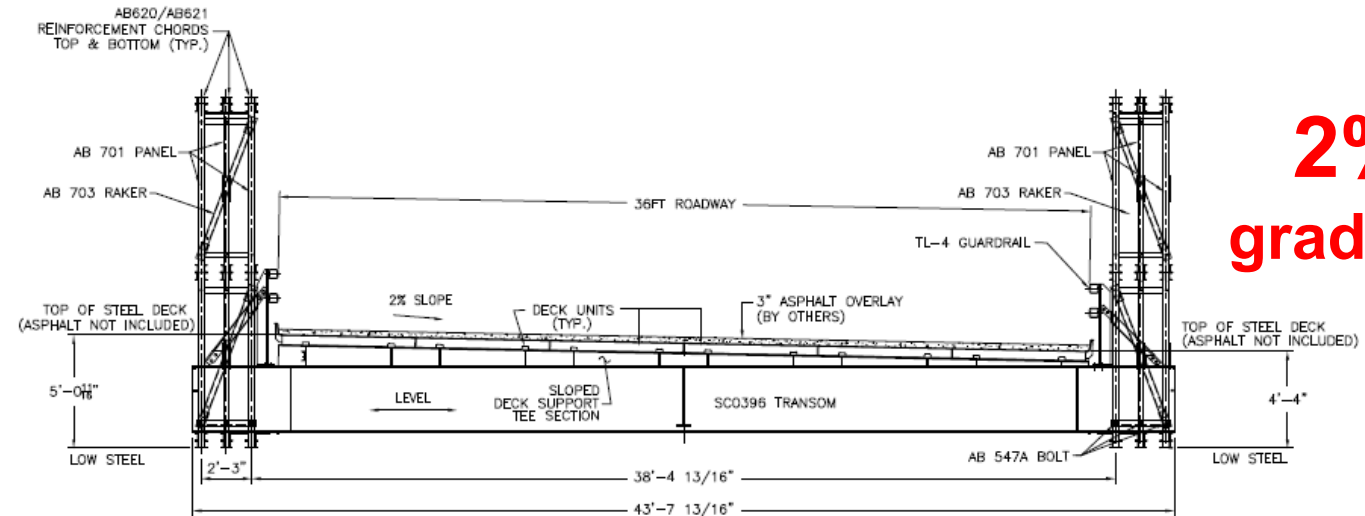


## **SUPER ELEVATED ROADWAYS**



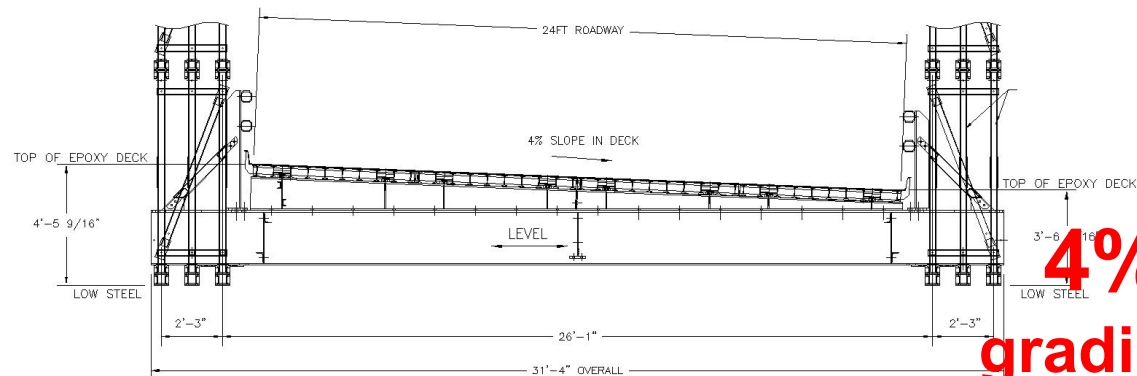


## SUPER ELEVATED ROADWAYS

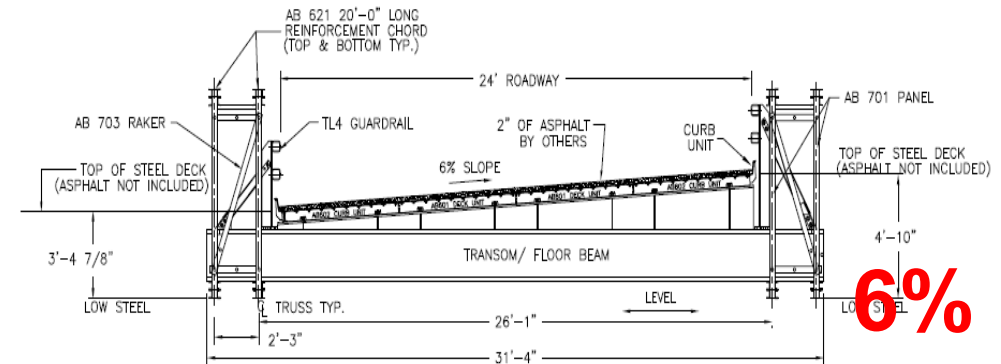


ACROW BRIDGE SECTION  
3LANE 36FT AT 2% SLOPE

**2%**  
**gradient**



**4%**  
**gradient**

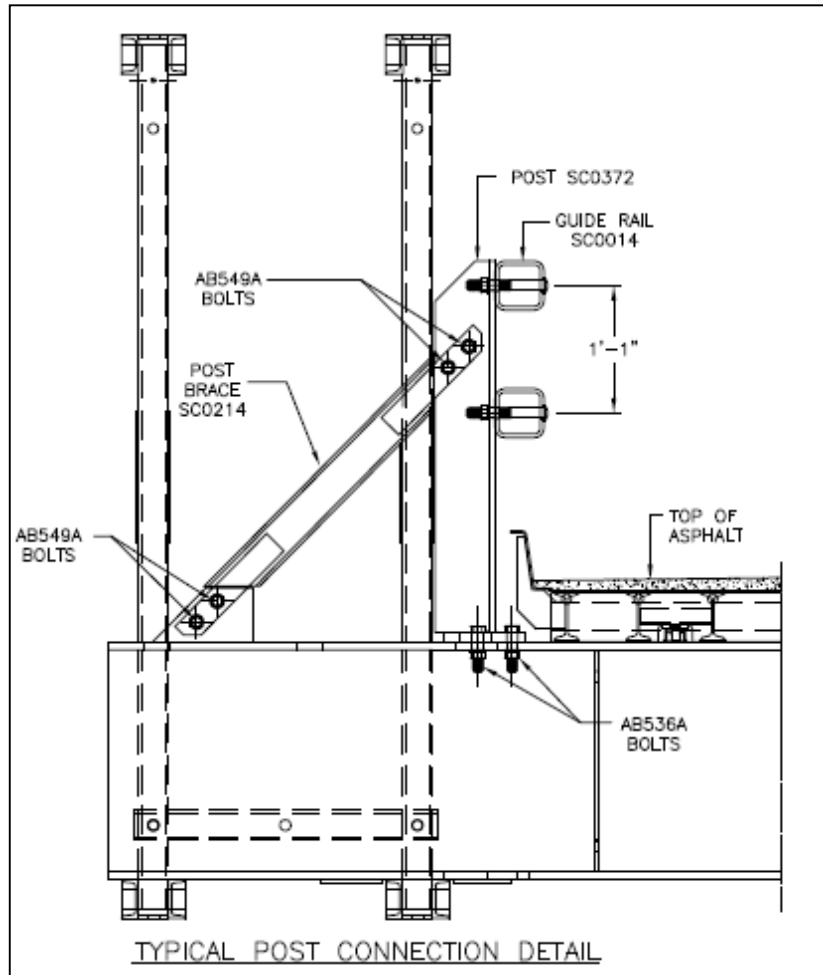


ACROW BRIDGE SECTION  
2LANE 24FT AT 6% SLOPE

**6%**  
**gradient**

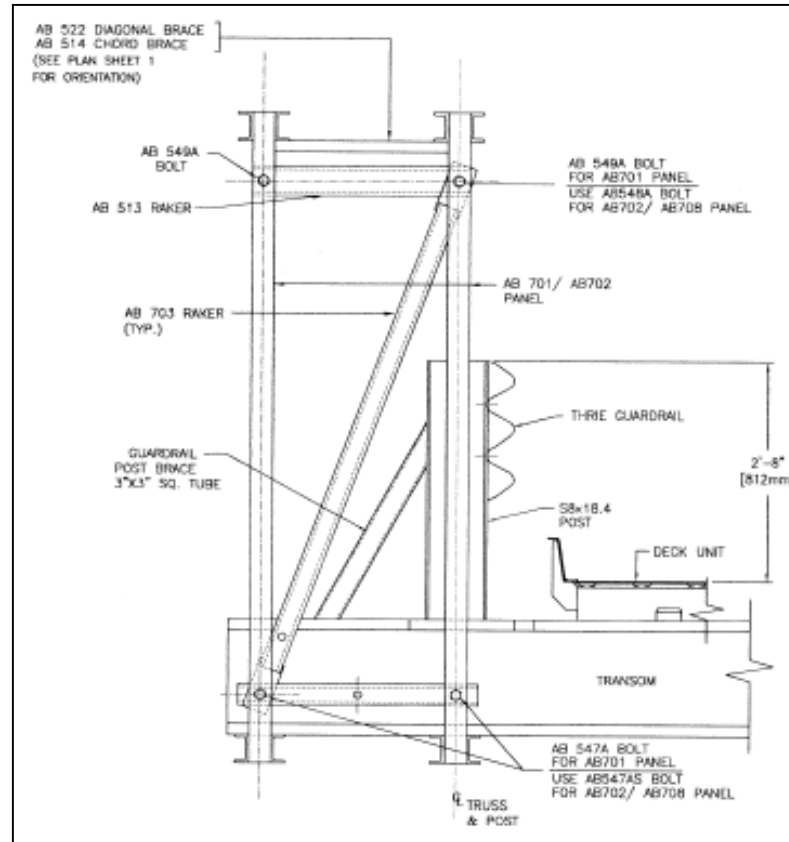


## 2 TUBE BRIDGE RAIL





## THRIE-BEAM BRIDGE RAIL





## **BENEFITS OF STEEL VS. CONCRETE**

- Significantly less time on site due to prefabrication
- No forms to build, and strip
- Better quality control
- No negative impact caused by weather, lighting, etc.
- Fabrication in precision jigs and robotic welding
- Lighter in weight, therefore less expensive substructure required
- Steel is almost 100% recyclable
- Easier to modify
- Historically proven that steel bridges outlive concrete bridges
- Easier maintenance and inspection
- Achieve longer spans, so less expensive if you can eliminate piers
- Rehabilitate to extend life span
- Quicker installation times



# PHASING VS ACCELERATED BRIDGE CONSTRUCTION

---

## PHASING ADDS 30-40% to PROJECT COSTS

- Phasing costs are dependent on many factors but 30 to 50% is the figure designers use to estimate costs
- Safety is compromised when vehicles are next to workers
- Night-work is less efficient and more dangerous
- Contractors mobilize equipment twice to compensate for road use during construction
- Detour Bridges:
  - ✓ Cost-effective in many applications
  - ✓ Faster project completion
  - ✓ Safer work areas
- Read more: [www.shortspansteelbridges.org](http://www.shortspansteelbridges.org)



# WHY ACROW?

---

- Proprietary, proven, advanced modular steel technology
- Expertly manufactured in the USA using high-quality, high-strength steel
- Easily customizable solutions to desired length, width and strength
- Precision-engineered and designed for safety and durability
- Hot-dip galvanized to eliminate corrosion and minimize maintenance
- Rapid installation with minimal labor and equipment
- Engineering support from start to finish
- Delivered in partnership with key stakeholders

**ACROW**



<https://www.youtube.com/watch?v=333333333333&feature=youtu.be>

# ACROW

C O N N E C T S

[acrow.com](https://www.acrow.com)

Will Smith – SE Regional Manager

251-408-1340

[wsmith@acrow.com](mailto:wsmith@acrow.com)





# ACROW

C O N N E C T S

[acrow.com](https://www.acrow.com)

Will Smith – SE Regional Manager

251-408-1340

[wsmith@acrow.com](mailto:wsmith@acrow.com)