

Louisiana Department of Transportation and Development

Training Requirements Catalog

Technology Transfer and Training (Revised February 2025)





Table of Contents

General Requirements	4
Introduction to DOTD Training	4
State and Agency Mandated Training	5
Employee Requirements – all employees.....	5
Supervisor Requirements - Classified Supervisors	5
Supervisor Requirements - Unclassified Supervisors	6
Non-State Persons with “P” Numbers	6
DOTD LP Hazardous Materials – all employees – course(s) depend on work location	6
Civil Service (CPTP) Requirements for Supervisors	7
SCS CPTP Supervisory Group Programs.....	7
SCS CPTP Continuing Education for Supervisors	8
DOTD Leadership Development – PPM 59, Appendix A	9
<i>DOTD Leadership Development Program Level 1 - Entry</i>	9
<i>DOTD Leadership Development Program Level 2 - Staff</i>	9
<i>DOTD Leadership Development Program Level 3 - Manager</i>	9
<i>DOTD Leadership Development Program Level 4 - Administrator</i>	10
<i>DOTD Leadership Development Program - Technicians</i>	10
Computer Training at DOTD	11
CADD, GIS, and PC Courses	11
<i>DOTD PC Computer Program – Admin Coordinators/Admin Assistants</i>	11
<i>DOTD PC Computer Program – Technicians</i>	11
Loss Prevention	12
Equipment Operator Certification Program (EOCP)	13
ATSSA Traffic Control Technician (TCT) and Supervisor (TCS)	15
Structured Training Introduction and Overview	16
Engineering Technicians – PPM 59, Appendix B.....	16
Maintenance Jobs - PPM 59, Appendix C	18
Engineering Interns – PPM 59, Appendix D.....	18
Specialty Areas, Authorizations, and Certifications – PPM 59, Appendix E.....	18
Administrative Assistants and Administrative Coordinators – PPM 59, Appendix F.....	18
DOTD Enforcement Jobs – PPM 59, Appendix I	19
Job Titles and DOTD Training Requirements as of January 1, 2025	20



Structured Training for Engineering Technicians	28
Section Engineering Technicians.....	28
Office of Engineering - Section 19.....	29
Office of Engineering - Section 22.....	30
Office of Engineering - Section 23.....	31
Office of Engineering - Section 24.....	32
Office of Engineering - Section 25.....	33
Office of Engineering - Section 27.....	34
Office of Engineering - Section 28.....	35
Office of Engineering - Section 30.....	36
Office of Engineering - Section 33.....	38
Office of Engineering - Section 35.....	39
Office of Engineering - Section 36.....	39
Office of Engineering - Section 40.....	40
Office of Engineering - Section 64.....	41
Office of Engineering - Section 67.....	42
Office of Engineering - Section 80.....	42
Office of Operations - Section 42	43
Office of Operations - Section 45	44
Office of Operations - Section 51	45
Office of Planning - Section 21.....	46
Office of Planning - Section 82	47
Office of Planning - Section 85	47
District Engineering Technicians	48
District Utility Permits (A-UTPR).....	49
District Design – Contracts and Specs (D-CNSP)	50
District Design – Road Design (D-ROAD)	51
District Design - Survey (D-SURV)	52
District Traffic Engineering (T-TRAF).....	54
District Rail Coordinator (A-RAIL).....	55
District Area Engineer Assistant (DIAEAS).....	56
District Construction Inspection, Lab and Training – General Information	57
District Construction Inspectors	58
District Laboratory	59

DOTD Training Requirements Catalog



District Office Technicians - Construction Inspection and Lab	61
District Training Technicians.....	62
District Construction Inspection, Lab and Training - Specialty Areas.....	63
District Construction Inspection, Lab and Training – Miscellaneous.....	65
District Construction Inspection, Lab and Training - Authorizations	66
District Construction Inspection and Training - Certifications	68
Structured Training for Maintenance Jobs.....	69
Introduction to Maintenance Jobs.....	69
Mobile Equipment Operators.....	71
Highway Foreman 1 and Parish Highway Maintenance Superintendent.....	73
Roadside Development.....	75
District Sign Specialists.....	76
Bridge Operators and Navigational Lock Operators.....	78
Highway Foreman 2.....	79
Highway Sign/Pavement Marking Supervisor	80
Transportation Operations Manager	81
Maintenance Trades	84
Sheet Metal Workers.....	86
Equipment Inspectors and Superintendents.....	87
Mechanics.....	88
Bridge Inspectors.....	89
Ferryboat Jobs and Personnel at Plaquemine Fleet Landing	93
ITS Technicians.....	94

General Requirements

Introduction to DOTD Training

DOTD Policy and Procedures Manual (PPM) No 59, subject Workforce Development, is the base document for training requirements at DOTD. Its appendices address details of various types of general training requirements and also requirements for certain groups of jobs. The current policy may be viewed at: http://wwwsp.dotd.la.gov/Inside_LaDOTD/Divisions/Mgmt_Finance/HR/Employee/PPMs/59%20Workforce%20Development.pdf

In January 2023, the state migrated to a new Learning Management System (LMS) called Success Factors (SF). The new system required DOTD to restructure existing training requirements based on what the LMS supports. Requirements may be general in nature; ex: all employees, all supervisors; or specific to job titles and/or work locations (organizational units).

This document, DOTD Training Requirements Catalog, provides an explanation of training requirements as defined in the LMS and gives additional details and guidance on required training. Access it from the LTRC Internet or Intranet site at https://www.ltrc.lsu.edu/pdf/Training_Requirements.pdf

A companion document to this catalog is the DOTD Course Catalog which provides details on all courses offered by DOTD/LTRC and courses provided by others that are included in required training. It can be accessed from the LTRC Internet or Intranet site at https://www.ltrc.lsu.edu/pdf/DOTD_Course_Catalog.pdf

The LMS contains “Items” (courses) and supports “Programs” and “Curricula”, both of which can consist of one or more courses. Programs may have multiple sections containing courses and each program section may have a different due date. The LMS does not provide for expiration dates on courses. Courses which must be repeated on a recurring basis are required in a Curriculum and course names will indicate if they “expire”. Throughout this catalog, program and curriculum names will be in ***bold italics***, followed by a table of the required courses. Required Programs and Curricula are usually automatically assigned to learners by the LMS.

Employees use SF–My Learning to view and take their assigned training or register for courses.

Supervisors use My Team to view the status of their employees and can assign additional training to them.

Each DOTD District has a Training Office, and each DOTD Section has a Training Liaison for assistance.

The Technology Transfer and Training section, which is part of the Louisiana Transportation Research Center (LTRC), produces or secures from outside sources, the majority of the training provided at DOTD. Within this section, the Internal Training Unit oversees how DOTD uses the LMS and defines the Programs, Curricula, and assignment profiles in the LMS.

Questions about training requirements may be emailed to DOTD-LTRC-Training-Help@la.gov

DISCLAIMER: This document is provided as a reference catalog for Training Requirements for DOTD employees. If in conflict, the existing LMS definitions and assignments are the official requirements.



State and Agency Mandated Training

DOTD has obtained the course materials for state mandated training and created a “DOTD” version. Employees should take the DOTD version. If the state version was taken, the employee may request credit for the DOTD version. DOTD requirements only check for the DOTD version.

Employee Requirements – all employees

DOTD Basic Curriculum for Employees

Initially due in the number of days shown below. If the course “expires”, it must be repeated on or before the date it would be expired. If an employee does not drive, a waiver credit may be given.

Courses Required	Days	Reason for Requirement
DOTD HR EEO 2024-25 Biennial Meeting	60	DOTD and FHWA
DOTD HR Cybersecurity Awareness	60	RS 42:1267
DOTD HR New Employee Orientation	30	DOTD policy
DOTD HR Substance Abuse All Employees - Expires 3 years	30	DOTD policy
DOTD HR Workplace Violence All Employees - Expires 3 years	30	DOTD policy
DOTD LP Defensive Driving WBT - Expires 3 years	30	Office of Risk Management
DOTD LP Bloodborne Pathogens WBT - Expires 5 years	30	Office of Risk Management
DOTD LP Office Safety WBT	60	DOTD policy – new Jan 2025
SCS CPTP CPM Basics	90	Civil Service policy

DOTD Basic Yearly Curriculum for Employees

The curriculum is not assigned to employees hired after October 1st of a calendar year. A new curriculum is created each calendar year. *Employees should attempt to complete courses earlier in the year.*

Courses Required	Due	Reason for Requirement
DOTD 2025 Ethics - La Board of Ethics	10/31	RS 42:1170
DOTD 2025 Prevent Sexual Harassment for Employees	10/31	RS 42:343

Supervisor Requirements - Classified Supervisors

“Supervisor” for purposes of these programs is determined by if the employee has any direct reports.

DOTD Basic Curriculum for Supervisors

Due 90 days from becoming a supervisor. Courses that expire must be repeated on or before the expiration.

Courses Required	Days	Reason for Requirement
DOTD HR ADA Compliance for Supervisors - Expires 3 years	90	RS 46:2595
DOTD HR Substance Abuse Supervisors - Expires 3 years	90	DOTD policy
DOTD HR Workplace Violence Supervisors - Expires 3 years	90	DOTD policy
DOTD HR Selecting the Best	90	DOTD policy
DOTD HR New Supervisor Orientation	90	DOTD policy

DOTD Basic Yearly Curriculum for Supervisors

Does not apply to new Supervisors after October 1st of a calendar year. New curriculum each calendar year.

DOTD 2025 Prevent Sexual Harassment for Supervisors	10/31	RS 42:343
---	-------	-----------



Supervisor Requirements - Unclassified Supervisors

DOTD Basic Curriculum for Unclassified Supervisors

Courses Required	Days	Reason for Requirement
DOTD 2025 Prevent Sexual Harassment for Supervisors	10/31	RS 42:343
DOTD HR ADA Compliance for Supervisors - Expires 3 years	90	RS 46:2595
DOTD HR Substance Abuse Supervisors - Expires 3 years	90	DOTD policy
SCS CPTP Performance Management for Executives	90	RS 42:1266 (one time)

Non-State Persons with “P” Numbers

Contractors and other non-state employees who obtain a Personnel Number for purposes of working within the ERP system for DOTD are required to take specific training in the LMS. Their job code is 00800010.

DOTD Basic Curriculum for Non-State Employees

Due when individual has been in the system for 90 days.

DOTD HR Cybersecurity Awareness
DOTD 2025 Ethics - La Board of Ethics
DOTD 2025 Prevent Sexual Harassment for Employees

DOTD LP Hazardous Materials – all employees – course(s) depend on work location

Required of all employees in the Districts and all employees in Sections 19, 22, and 28.

DOTD Basic LP Curriculum - Hazardous Materials Full Course

DOTD LP Hazardous Materials Full Course WBT

The Annual Refresher is required for all employees in the District Labs and Sections 19, 22, and 28. Maintenance employees in the Districts and Operations Sections who need the refresher will see it in the Training Curricula for their job.

DOTD Curriculum LP Hazardous Materials Refresher

DOTD LP Hazardous Materials Annual Refresher WBT - Expires 1 year

OR

Required of all other employees not in the Districts or the Sections requiring Full Course. The Full course can substitute for the Labels-Symbols version.

DOTD Basic LP Curriculum - Hazardous Materials Labels-Symbols

DOTD LP Hazardous Materials Labels-Symbols WBT
--

Other Loss Prevention courses may be required on a Job specific basis OR Individually.

These include Blood borne Pathogens Hi-Risk, Boating Safety and Refresher, Confined Spaces, and Lockout-Tagout. Other courses may be added and required within the LMS without a specific revision to this manual.



Civil Service (CPTP) Requirements for Supervisors

SCS CPTP Supervisory Group Programs

Employees in *classified* job titles that are assigned to a Supervisory Group by Civil Service will be auto-assigned to the appropriate program. (See Job Titles, column CS for the group assignment, if any.) Programs and Due Dates are defined by CPTP. **PPM 59, Appendix H** addresses these requirements.

The LMS is used by employees to take the **web-based (WBT) courses** and schedule required **classroom (ILT) courses**. Web-based courses should be taken as soon as possible as they must be completed before the classroom course may be taken. The “classroom” training is delivered as a single day in-person course or can be completed by scheduling and completing in sequence, three separate two hour zoom sessions.

A supervisor will only be in one of the Supervisory programs at a time. It will consist of all sections required for the program. The Due Date is set as determined by CPTP for each section in the program.

- **SCS CPTP Group 1 Supervisory Program** consists of the CORE and Group 1 sections.
- **SCS CPTP Group 2 Supervisory Program** consists of CORE, Group 1 and Group 2 sections.
- **SCS CPTP Group 3 – SCS CPTP Supervisory Online Core**, consists *only* of CORE Web-Based Courses. CPTP is not assigning training to Group 3 people as of the date of this publication.

<https://civilservice.louisiana.gov/images/pictures/TrainingPhotos/2023%20MTR%20Graphic.png>

CORE Sections: Due 6 months after assignment to program	
CORE Web-Based Courses	
SCS CPTP Civil Service Essentials for Supervisors	
SCS CPTP Common Myths that Affect Good Supervision	
SCS CPTP Hiring and Retaining Top Talent	
SCS CPTP Leave Management	
SCS CPTP Validating Employee Performance	
CORE Capstone	
SCS CPTP 2015 Core Capstone Workshop	Classroom: in-person or via zoom

Group 1 Sections: Due 2 years after assignment to program	
Group 1 Web-Based Courses	
SCS CPTP Building Trust	
SCS CPTP Work Processes	
SCS CPTP Change Management	
SCS CPTP Top Down Communication	
SCS CPTP Emotional Intelligence 1	
SCS CPTP Inspirational Leadership	
SCS CPTP Situational Leadership 1	
SCS CPTP Conflict Management	
SCS CPTP Delegating Effectively	
Group 1 Capstone	
SCS CPTP 2015 Group 1 Capstone Workshop	Classroom: in-person or via zoom

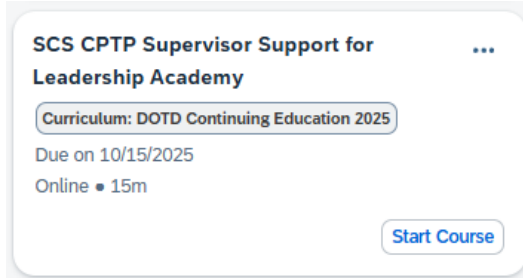


Group 2 Sections: Due 4 years after assignment to program	
Group 2 Web-Based Courses	
SCS CPTP Organizational Dynamics	
SCS CPTP Emotional Intelligence 2	
SCS CPTP Ethical Leadership	
SCS CPTP Prioritizing Mission Critical Tasks	
SCS CPTP Situational Leadership 2	
SCS CPTP Strategic Thinking	
SCS CPTP Work Life Balance	
SCS CPTP Critical Thinking	
Group 2 Capstone	
SCS CPTP 2015 Group 2 Capstone Workshop	Classroom: in-person or via zoom

SCS CPTP Continuing Education for Supervisors

Supervisors who are in Groups 1 or 2 and who have completed their Group Supervisory Program by the end of the last calendar year are required to complete Continuing Education in all subsequent years. CPTP designates the course(s) that qualify as Continuing Education each calendar year.

People who need to complete Continuing Education in 2025 have been assigned to a DOTD curriculum that contains the course. It is listed in an employee's Required Learning section as shown below.



This course is about the OPTIONAL CPTP Leadership academy. This is not to be confused with the DOTD Leadership Development Program.

Upon completion of the course, two credits will be shown on the employee transcript:

SCS CPTP Continuing Education 2025

SCS CPTP Supervisor Support for Leadership Academy



DOTD Leadership Development – PPM 59, Appendix A

The Leadership Development category of training is defined in **PPM 59, Appendix A**. Employees are auto-subscribed to a Leadership Program based on their job title. (See Job Titles, column LD.)

A person will be in only one Leadership program at a time. Programs levels build, so higher levels may contain courses required at lower levels. All courses are instructor-led and only need to be taken once.

Courses in the “Fundamentals” section of a program must be complete to be eligible for permanent status.

DOTD Leadership Development Program Level 1 - Entry

Courses in the program are due within 2 years of assignment to the program.

1.	Fundamentals	Due Date: 2 years
1.01	DOTD LD Foundations of Leadership Development	
1.02	DOTD LD Emotional Intelligence	

DOTD Leadership Development Program Level 2 - Staff

All courses in the program are due within 3 years of assignment to the program.

1.	Fundamentals	Due Date: 2 years
1.01	DOTD LD Foundations of Leadership Development	
1.02	DOTD LD Emotional Intelligence	
2.	Staff Level Courses	Due Date: 3 years
2.01	DOTD LD Conflict Management	
2.02	DOTD LD Professional Writing	
2.03	DOTD LD Organizational Culture	

DOTD Leadership Development Program Level 3 - Manager

All courses in the program are due within 3 years of assignment to the program.

1.	Fundamentals	Due Date: 2 years
1.01	DOTD LD Foundations of Leadership Development	
1.02	DOTD LD Emotional Intelligence	
2.	Staff and Manager Level Courses	Due Date: 3 years
2.01	DOTD LD Conflict Management	
2.02	DOTD LD Professional Writing	
2.03	DOTD LD Organizational Culture	
2.04	DOTD LD Facilitation Skills for Managers	
2.05	DOTD LD Managing Across Generations/Transformational Leadership	



DOTD Leadership Development Program Level 4 - Administrator

Courses in the program are due within 3 years of assignment to the program.

1.	Leadership Core Courses
1.01	DOTD LD Foundations of Leadership Development
1.02	DOTD LD Emotional Intelligence
1.03	DOTD LD Organizational Culture
1.04	DOTD LD Managing Across Generations/Transformational Leadership

DOTD Leadership Development Program - Technicians

Most Technicians have Structured Training requirements that are usually required within the lower job levels. This Leadership Development program is assigned to technicians at the more senior levels which include Engineering Technician 5, Engineering Technician DCL and Engineering Technician 7.

Courses in the program are due within 3 years of assignment to the program.

1.	Leadership Development for Technicians
1.01	DOTD LD Foundations of Leadership Development
1.02	DOTD LD Emotional Intelligence
1.03	DOTD LD Professional Writing

Technicians may choose to take additional Leadership courses, or their supervisors may assign additional courses to them.

Questions about the Leadership programs may be sent to dotd-ltrc-training-help@la.gov .



Computer Training at DOTD

DOTD offers a large number of computer courses to employees to assist them in their jobs. Training is delivered by contractors. SuccessFactors is used to request or schedule courses.

Scheduling is coordinated through Melissa Lee Boyd – melissa.lee@la.gov.

CADD, GIS, and PC Courses

DOTD CADD – Computer Aided Drafting and Design
 DOTD GIS – Geographic Information Systems and ARCGIS
 DOTD PC – Personal Computers and Microsoft Software

CADD and GIS courses are not in “programs” in the LMS. Employees may assign courses to themselves or supervisors may require their employees to complete courses needed for their jobs.

DOTD PC courses. Windows Level 1 is now only taught on request and is not required. Employees may try to test out of some courses for credit and eligibility to take higher level courses. Follow instructions on the web... DOTD Intranet > LTRC Training Opportunities > Online Training.

Programs for basic PC training are auto assigned to employees in certain job titles.

(See Job Titles, column PC: A or T.) Supervisors may require other courses and employees are encouraged to take additional PC courses that may be useful in their jobs.

DOTD PC Computer Program – Admin Coordinators/Admin Assistants

See Job Titles at DOTD..., column PC = A for jobs required to complete this program.

The program is due within 3 years of assignment when first employed in a job title in the series.

DOTD PC MS One Note
DOTD PC MS Outlook Level 1
DOTD PC MS Outlook Level 2
DOTD PC MS Word Level 1
DOTD PC MS Word Level 2
DOTD PC MS Excel Level 1

DOTD PC Computer Program – Technicians

See Job Titles at DOTD..., column PC = T for jobs required to complete this program.

The program is due within 3 years of assignment when first employed in a job title in the series.

DOTD PC MS Outlook Level 1
DOTD PC MS Word Level 1
DOTD PC MS Excel Level 1

The program above is also assigned to all Bridge Inspectors, Section 45 Transportation Operations Managers, and Section 51 MEO Heavy 1 & 2 and Highway Foreman 2.



Loss Prevention

Loss Prevention courses required of all employees are addressed under State and Agency Mandated Training. These include: Bloodborne Pathogens, Defensive Driving, and Hazardous Materials. Other Loss Prevention courses are required by job title, work location, or manually assigned to individuals.

Loss Prevention courses that are required to be taken once will be assigned to employees in a Structured Training program in a section labeled “Safety”. These courses are usually required within 90 days of assignment to the STP.

Commonly required are:	DOTD LP Electrocution Prevention WBT
DOTD LP Safe Driving WBT	DOTD LP Poisonous Plant Safety WBT
DOTD LP Heat Stress WBT	DOTD LP Power/Hand Tool Safety WBT
	DOTD LP Asbestos Awareness WBT

Loss Prevention courses that expire and must be retaken periodically will be assigned to employees in a Structured Training curriculum based on their job title or work location. A current record is always required.

Courses often required are:

- DOTD LP Hazardous Materials Annual Refresher - Expires 1 year
- DOTD LP Lockout/Tagout WBT - Expires 1 year
- DOTD LP Confined Spaces WBT - Expires 3 years
- DOTD LP Boating Safety Refresher WBT - Expires 3 years

Confined Spaces in-person course

Some employees may be required to attend in-person training by the name of:

DOTD LP Confined Spaces Class ILT

After completing the in-person course, employees will be assigned to complete the web-based course three years after the in-person training and every three years thereafter.

DOTD Curriculum LP Confined Spaces WBT after ILT course

DOTD LP Confined Spaces WBT – Expires 3 years

Boating Safety and Refresher

The initial Boating Safety course is taken in person from a recognized training entity or on the U.S. Boat external website. It is required in the STP for some jobs and may be individually required for other employees. Upon proof of completion, the training coordinator or LTRC will give credit for:

DOTD LP Boating Safety Course WBT-External

When Boating Safety is required for a job or work location, a curriculum will require the Refresher course:

DOTD LP Boating Safety Refresher WBT - Expires 3 years

Curricula available for individual assignment of expiring courses to employees.

DOTD Curriculum LP Hi-Risk Bloodborne Pathogens

DOTD LP Bloodborne Pathogens Hi-risk - Expires 1 year

DOTD Curriculum LP First Aid and CPR

DOTD LP First Aid and CPR Class - Expires 2 years



Equipment Operator Certification Program (EOCP)

The EOCP program established training for 75 categories of equipment, Training must be received and documented before a person can operate one of these specific pieces of equipment.

Guidelines for the EOCP Program are on the DOTD Intranet at

<http://apps2/operations/equs/docs/eocp/EOCP%20Guidelines%20Manual%202023%20v3.0.pdf>

Types of Training and Record Names

Prerequisite Training – Videos, job aids and web-based training that is usually safety related.

Names: DOTD STEq...

ESAs –30 types of equipment require completion of an ESA to operate. ESAs do not expire.

Names: DOTD-ESA...

Trainee/Operator - 45 types of equipment require Trainee or Certified Operator status to operate.

Part 1 –Trainee - Completion allows operating the type of equipment under supervision.

Names: DOTD-EOCP... Part-1

Part 2 - Certified Operator – Completion allows operation of the type of equipment.

Part 1 must have been completed and the employee must have completed a required number of hours operating the equipment as specified by the EOCP program.

Names: DOTD-EOCP... Part-2 - expires every 4 years

Instructor – approved instructors may train others to use a type of equipment.

Names: DOTD-EOC INSTR...

Curriculums exist for ESAs and for each Equipment that has a Part-1 and Part-2

The requirement to operate a specific type of equipment is made on an individual basis.

Curriculum Name: DOTD-EOCP...Certified Operator

Example: ***DOTD-EOCP Dump Truck Certified Operator***

DOTD STEq Dump Truck Safety
DOTD-EOCP Dump Truck Part-1
DOTD-EOCP Dump Truck Part-2 - expires 4 years

Requiring Employee to Complete Equipment Training

- Supervisor specifies which equipment training will be required of their employees.
- District Trainers or the Supervisor can assign curricula to the person.
- ESAs or DOTD STEq courses may be assigned in STPs in specific circumstances.



Checklist of all Equipment included in the EOCP program

DOTD EQUIPMENT OPERATOR CHECKLIST		Trainee	Certified	Tier 1 – Recertify Part 2 every 4 years
Employee P number _____				Asphalt Distributor
Name _____				Chipper Mulcher Grinder
Dist _____ Unit _____				Concrete Saw-Joint Cutter
Supervisor _____				Line Remover Grinder
INSTRUCTIONS				Overhead Trimmer-Cutter
ESAs – Check box if required.				Power Attach-Grader Drum
Tier 1, Tier 2, and Tier 3 equipment – check box for Part 1 only or Part 1 and 2.				Powered Sweeper
Part 1 – Trainee status				Roller-Compactor
Part 2 – Certified Operator				Skid Steer
Equipment Safety Analysis (ESA)				Small Work-Utility Truck
	Chain Saw			Tractor Mower Basic
	Fork Lift			Tractor-Attach-Cutter Mower
	Lawn Mowers			Tractor-Attach-Slope Mower
	Outboard Motors			Walk Behind Striper
	Power and Hand Tools			
	Power Attach Auger			Tier 2 – Recertify Part 2 every 4 years
	Power Attach Breaker			Core-Drill Unit
	Power Attach Grapple Bucket			Dozers
	Power Attach Grinder Planar			Dump Truck
	Power Attach Post Driver			Excavator-Gradall
	Power Attach Rock Wheel			FrontEnd Loader
	Power Attach Towed Sweeper			Heavy Work Truck-CDL
	Salt Aggregate Spreader			Herbicide Spray System
	Spec Trailer-Asphalt Distrib			Lowboy-Flatbed
	Spec Trailer-Attenuator			Mixer-Stabilizer
	Spec Trailer-Crack Sealer			Motor Grader
	Spec Trailer-Culvert Cleaner			Sewer Jet Truck
	Spec Trailer-Dump Trailer			Shoulder Spreader
	Spec Trailer-Light Tower			Specialty Trailer-Mud Jack
	Spec Trailer-Message Board			Street Sweeper Truck
	Spec Trailer-Pole Trailer			Striping Machine Large
	Spec Trailer-Pothole Patcher			Tracked Excavator-Large
	Spec Trailer-Power Broom			Tracked Excavator-Small
	Spec Trailer-Traffic Control			Tractor Mounted Backhoe
	Spec Trailer-Traffic Monitor			Tractor-Loader
	Spec Trailer-Vacuum Evacuator			Trencher
	Tractor Attach-Disc Harrow			
	Tractor Attach-Grading Blade			Tier 3 – Recertify Part 2 every 4 years
	Trailers			Aerial-Platform Lift
	Utility Vehicles			Asphalt Paver Spreader
				Bridge Inspection Trailer
				Bridge Inspection Truck
				Bucket Truck
				Cranes
				Digger Derrick
				Directional Boring Machine
				Milling Machine
				Pile Driving System
				Pile Extracting Machine

Rev. 3/23/2023



ATSSA Traffic Control Technician (TCT) and Supervisor (TCS)

The TCT and TCS courses are required for multiple jobs, so are introduced here. These courses are typically required in Structured Training programs for Engineering Technicians, and may be individually assigned to Engineers. Other ATSSA courses are available and may be required in Structured Training Programs.

Scheduling for all ATSSA courses is coordinated through Melissa Lee Boyd – melissa.lee@la.gov.

Rules regarding eligibility for TCT and TCS courses:

- Traffic Control Technician (TCT) is required prior to taking Traffic Control Supervisor (TCS).
- All jobs that require TCT may not require completing the TCS course.
- After completing TCT:
 - TCT course must be repeated every 4 years,
 - OR, the TCS course can be taken.
- After completing TCS:
 - TCT is no longer repeated,
 - TCS Refresher course must be taken every 4 years.

A. Refer to Structured Training Program (STP) for a job for the TCT/TCS requirements.

B. Employees who have completed TCT and not TCS will be placed in the following Curriculum.

DOTD Curriculum ATSSA Traffic Control Technician

DOTD ATSSA Traffic Control Technician (TCT) Louisiana Specific - Expires 4 years

C. Employees who have completed TCS will be placed in the following Curriculum.

DOTD Curriculum ATSSA Traffic Control Supervisor Refresher

DOTD ATSSA Traffic Control Supervisor Refresher (TCSR) Louisiana Specific - Expires 4 years

D. Employees, usually Engineers, who are not in a program requiring TCT or TCS, but are assigned to or choose to take it, may be manually assigned to the appropriate curriculum as described above.

E. Employees completing the main TCS course will be given credit for the TCSR course simultaneously. This allows the Curriculum for the Refresher to be applied to the employee who will take the Refresher in 4 years and every 4 years after unless removed from the Curriculum.



Structured Training Introduction and Overview

Structured Training Programs (STPs) address more specific training requirements of certain populations of employees at DOTD. These are usually automatically assigned to employees based on their job title or their location of work. There may also be Curricula for populations who are required to retake courses that expire.

Appendices B, C, D, E, F, and I in the Workforce Development PPM 59, further define training policy for certain groups of job titles and set additional policy for personnel actions for employees in the group. For example, any program with a section name that includes the word “Fundamental” will require that program-section’s training to be complete for a Probationary employee to be eligible for Permanent Status.

The **Job Titles and DOTD Training Requirements** listing that follows indicates if a job has Structured Training and which group the title is covered under.

Training in SuccessFactors

Structured Training Programs or Curricula may be added or modified and become effective without modifications to this document. If any requirements in this catalog are in conflict with the Program or Curricula in the LMS (SuccessFactors), the SuccessFactors assignments should be followed. Any questions about training assignments should be addressed to the district training office or the section training liaison.

Substitution Credit for Required Courses

Employees with college level credit for Math and/or English may request credit for required DOTD Math and English courses. Complete the Course Substitution Request Form on the DOTD Intranet in the LTRC section.

Certain DOTD Math courses required will allow other DOTD Math courses to substitute as shown below.

Course Required	DOTD Courses that can Substitute for the Course required
DOTD STP Location & Design: Basic Math	DOTD STP Math Construction Part 1
DOTD STP Math Construction Part 1	DOTD STP Location and Design: 1 Algebra
DOTD STP Math Construction Part 2	DOTD STP Location and Design: 2 Geometry and Trig
DOTD STP Math Maintenance	DOTD STP Math Construction Part 1 OR DOTD STP Location and Design - Basic Math

Engineering Technicians – PPM 59, Appendix B

A detailed chapter on Engineering Technicians and their structured training follows the Job Titles list in this document. Listed below is information that pertains to all Engineering Technicians. These jobs titles are used in a multitude of settings at DOTD and so there are many structured training programs which are assigned not just on job title, but also based on organizational units or even directly to individuals.

All Engineering Techs are assigned to a Structured Training program.

All Engineering Techs are required to complete [DOTD PC Computer Program – Technicians](#).

Engineering Techs 5, DCL and 7 must complete [DOTD Leadership Development Program – Technician](#).

When used in the District Construction Inspection Units (2xx), the Project Analyst 1, 2, and Manager jobs will require the same Structured Training as the Engineering Technicians.



Engineering Technicians in District Construction Inspection, District Laboratory or District Training require Specialty Areas, or Authorizations or Certifications which are covered in Appendix E.

Personnel Actions and Due Date Requirements for Engineering Technicians

Eligibility for Permanent Status

See chart below for title at hiring and the program sections required within the first year, regardless of due date in the LMS, to be eligible for Permanent Status.

Job Title at Employment in Probation Status	Program – Sections Required		
	Fundamentals	ET 1	ET 2
Engineering Technician 1	for perm status		
Engineering Technician 2	for perm status		
Engineering Technician 3	for perm status	for perm status	
Engineering Technician 4 & up	for perm status	for perm status	for perm status

Job Title when Hired: Due Dates for Program-Sections

In addition to the Fundamentals section that is always due in 1 year, ETs must complete the other program sections in the time period shown below. The schedule is accelerated if the ET was first employed in an ET job title above ET 1. Failure to complete required training on this schedule may result in demotion to the job title of the highest level of training completed.

Job Title at Employment	Program-Section	Due Date
Engineering Technician 1	ET 1	2 years
Engineering Technician 2	ET 1	2 years
	ET 2	3 years
Engineering Technician 3	ET 1	1 year
	ET 2	2 years
	ET 3	3 years
Engineering Technician 4	ET 1	1 year
	ET 2	1 year
	ET 3	2 years
	ET 4	3 years
Engineering Technician 5 and above	ET 1	1 year
	ET 2	1 year
	ET 3	2 years
	ET 4	3 years
	ET 5	4 years

To be eligible to advance through Reallocation in Career Progression Group or Promotion

Engineering Technicians must have an overall training status of “In Compliance” and must have completed all courses in the assigned STP for their current job title.



Maintenance Jobs - PPM 59, Appendix C

Maintenance jobs are those in the WS pay schedule. The only exception is Bridge Inspectors who are in the TS pay schedule but work within the maintenance organization of DOTD. A chapter on Maintenance Jobs and their structured training is located later in this document. Standard safety training and courses for maintenance supervisors are assigned to jobs. Other requirements are job title and work location based.

Engineering Interns – PPM 59, Appendix D

This program is required department-wide for new Engineer Intern Applicants and Engineer Intern 1 or 2. These jobs also require the program DOTD Leadership Development Program Level 1 – Entry.

DOTD Program - Engineer Interns

Due date : 1 year. *Program must be complete to be eligible for Permanent Status.*

1.	Fundamental Training
1.01	DOTD STW Safety Made Simple: The ABCs of Work Zone Safety WBT
1.02	DOTD STW Work Zone TTC Safety WBT
1.03	DOTD STW Basic Flagging Procedures
1.04	DOTD STP Standard Specifications
1.05	DOTD STP Highway Plan Reading Vol 1
1.06	DOTD STP Highway Plan Reading Vol 2

Specialty Areas, Authorizations, and Certifications – PPM 59, Appendix E

Engineering Technicians in District Construction Inspection, District Laboratory or District Training are subject to Appendix B for Engineering Technicians and also require Specialty Areas, or Authorizations or Certifications which are covered in Appendix E.

Administrative Assistants and Administrative Coordinators – PPM 59, Appendix F

In addition to one of the two programs below, these jobs also require their *DOTD PC Computer Program*.

DOTD Program - Admin Coordinators in Districts and HQ Sects 42 and 45

ADCOOR: Required for all Admin Coordinators who are in the Districts or HQ Operations sections 42 and 45.

Due Date: 3 years

1.	Required Courses
1.01	SCS CPTP Phone Etiquette
1.02	SCS CPTP Email Etiquette
1.03	DOTD STP Math Maintenance
1.04	DOTD STP English Grammar



DOTD Program - Admin Assistants and HQ Admin Coordinators

ADASST: Required for all Administrative Assistants through Administrative Assistant 5 and for all section Administrative Coordinators except those in the Operations sections 42 and 45.

Due Date: 3 years

1.	Required Courses
1.01	SCS CPTP Phone Etiquette
1.02	SCS CPTP Email Etiquette
1.03	SCS CPTP Customer Service Overview
1.04	SCS CPTP Communicating in the Command Chain
1.05	SCS CPTP Time Management
1.06	DOTD PC MS Administrative Assistant Topics for MS Word Users
1.07	DOTD LD Conflict Management
1.08	DOTD STP English Grammar

DOTD Enforcement Jobs – PPM 59, Appendix I

The DOTD Enforcement job titles are in the PS pay schedule. Their training requirements are specified in the DOTD Police General Order #320 and are tracked in a separate LMS used only by Section 52. These job titles are also required to meet any training identified in the Job Titles list.



Job Titles and DOTD Training Requirements as of January 1, 2025

- CS Job – job code for the title.
- Job Title – abbreviated job title.
- Grade – pay grade
- CS – Civil Service Supervisory Group. Groups are 1, 2, 3 or blank if not a supervisor.
- LD – DOTD Leadership level if any. TE=Technician, P1=Entry, P2=Staff, P3=Manager, P4=Administrator
- PC – DOTD PC Computer program if any. A=Admin Coor/Asst, T=Technicians
- Structured Training – section where additional training requirements for the job title can be found.

CS Job	Job Title	GRADE	CS	LD	PC	Structured Training
160180	ACCOUNTANT 1	AS612		P1		
139350	ACCOUNTANT 2	AS613		P1		
139370	ACCOUNTANT 3	AS615		P2		
171400	ACCOUNTANT 4	AS617		P2		
159790	ACCOUNTANT ADMIN 5	AS624	3	P4		
159710	ACCOUNTANT MANAGER 1	AS618	1	P3		
159720	ACCOUNTANT MANAGER 2	AS619	2	P3		
159730	ACCOUNTANT MANAGER 3	AS621	2	P3		
159740	ACCOUNTANT MANAGER 4	AS622	2	P3		
159590	ACCOUNTING SPEC SUPV	AS613	1			
136950	ACCOUNTING SPECIALIST 1	AS608				
140470	ACCOUNTING SPECIALIST 2	AS610				
139340	ACCOUNTING TECHNICIAN	AS611				
170640	ADM PROG DIR 1	AS616	1	P3		
170650	ADM PROG DIR 2	AS618	2	P3		
170660	ADM PROG DIR 3	AS620	2	P3		
170670	ADM PROG DIR 4	AS622	3	P3		
170680	ADM PROG MGR 1	AS614	1	P3		
170690	ADM PROG MGR 2	AS615	1	P3		
170700	ADM PROG MGR 3	AS617	1	P3		
168090	ADM PROG SPECIALIST-A	AS613		P1		
168100	ADM PROG SPECIALIST-B	AS614		P2		
168110	ADM PROG SPECIALIST-C	AS615		P2		
168000	ADMIN ASSISTANT 1	AS605			A	Admin Assistant/Coordinator
168010	ADMIN ASSISTANT 2	AS607			A	Admin Assistant/Coordinator
168020	ADMIN ASSISTANT 3	AS609			A	Admin Assistant/Coordinator
168030	ADMIN ASSISTANT 4	AS611			A	Admin Assistant/Coordinator
168080	ADMIN ASSISTANT 5	AS613			A	Admin Assistant/Coordinator
171200	ADMIN ASSISTANT 6	AS614			A	none
168040	ADMIN COORDINATOR 1	AS605			A	Admin Assistant/Coordinator
168050	ADMIN COORDINATOR 2	AS607			A	Admin Assistant/Coordinator
168060	ADMIN COORDINATOR 3	AS609			A	Admin Assistant/Coordinator

DOTD Training Requirements Catalog



CS Job	Job Title	GRADE	CS	LD	PC	Structured Training
168070	ADMIN COORDINATOR 4	AS611			A	Admin Assistant/Coordinator
167340	ADMIN SUPERVISOR 1	AS609	1		A	
167350	ADMIN SUPERVISOR 2	AS611	1		A	
159930	AIRCRAFT FLEET CHF PILOT	WS221				
159940	AIRCRAFT FLEET COMD PILOT	WS222				
159920	AIRCRAFT PILOT 2	WS219				
501510	ASSIST SECRETARY (UNCL)	UN				
501730	ASST TO SEC FOR POLICY	UN				
160580	ATTORNEY 1	AS617		P1		
160590	ATTORNEY 2	AS618		P1		
160600	ATTORNEY 3	AS620		P2		
171470	ATTORNEY 4	AS621		P2		
160610	ATTORNEY SUPERVISOR	AS622	1	P3		
171480	ATTY--DEP GEN COUNSEL 1	AS623	1	P3		
171490	ATTY--DEP GEN COUNSEL 2	AS624	1	P3		
171520	ATTY--GENERAL COUNSEL 3	AS626	3	P4		
168300	AUDIT DIRECTOR 2	AS623	2	P4		
171410	AUDIT DIRECTOR 3	AS624	2	P4		
158560	AUDIT MANAGER	AS621	2	P3		
158520	AUDITOR 1	AS614		P1		
158530	AUDITOR 2	AS615		P1		
158540	AUDITOR 3	AS617		P2		
171420	AUDITOR 4	AS618		P2		
158550	AUDITOR SUPERVISOR	AS619	1	P3		
161750	AUDITOR-INTERNAL	AS621		P2		
173760	BRIDGE INSPECTOR 1	TS305			T	Maintenance-Bridge Inspection
173770	BRIDGE INSPECTOR 2	TS307			T	Maintenance-Bridge Inspection
173780	BRIDGE INSPECTOR 3	TS308			T	Maintenance-Bridge Inspection
173790	BRIDGE INSPECTOR 4	TS311			T	Maintenance-Bridge Inspection
173800	BRIDGE INSPECTOR 5	TS314			T	Maintenance-Bridge Inspection
128760	BRIDGE-LOCK OPERATOR 1	WS209				Maintenance-Bridge-Lock
128680	BRIDGE-LOCK OPERATOR 2	WS210				Maintenance-Bridge-Lock
139790	BUDGET ADMINISTRATOR 1	AS620	1	P3		
150880	BUDGET ADMINISTRATOR 2	AS622	2	P3		
165690	BUDGET ADMINISTRATOR 3	AS624	2	P4		
139690	BUDGET ANALYST 1	AS612		P1		
139700	BUDGET ANALYST 2	AS613		P2		
139730	BUDGET ANALYST 3	AS615		P2		
171430	BUDGET ANALYST 4	AS618		P2		
139770	BUDGET MANAGER	AS618	1	P3		
173480	BUSINESS ANALYTICS SPEC	AS620		P2		
175420	BUSINESS TECH SPEC 1	TS314		P2		

DOTD Training Requirements Catalog



CS Job	Job Title	GRADE	CS	LD	PC	Structured Training
175430	BUSINESS TECH SPEC 2	TS315		P2		
175440	BUSINESS TECH SUPERVISOR	TS316	1	P3		
128700	CARPENTER	WS212				Maintenance-Trades
128710	CARPENTER FOREMAN	WS215	1			Maintenance-Trades
128740	CARPENTER MASTER	WS213				Maintenance-Trades
502260	CHIEF OF STAFF	UN				
503850	CHIEF/EMERGENCY OPER	UN				
170980	COMPLIANCE INSPECTOR 1	AS609				
170990	COMPLIANCE INSPECTOR 2	AS611				
171000	COMPLIANCE INSPECTOR 3	AS613				
171010	COMPLIANCE INVESTIGATOR 1	AS612				
171020	COMPLIANCE INVESTIGATOR 2	AS614				
171030	COMPLIANCE INVESTIGATOR 3	AS615				
172060	COMPLIANCE INVESTIGATOR 4	AS618				
158590	COMPLIANCE PROG SPEC 1	AS611		P1		
158600	COMPLIANCE PROG SPEC 2	AS612		P1		
158610	COMPLIANCE PROG SPEC 3	AS614		P2		
158620	COMPLIANCE PROG SPEC 4	AS616		P3		
502530	CONFIDENTIAL ASST (UNC)	UN				
160200	CONTRACT/GRANT REVIEW 1	AS611		P1		
160210	CONTRACT/GRANT REVIEW 2	AS612		P1		
166140	CONTRACT/GRANT REVIEW 3	AS614		P2		
166150	CONTRACT/GRANT REVIEW 4	AS619		P2		
160230	CONTRACT/GRANT REVIEW MGR	AS617	1	P3		
160220	CONTRACT/GRANT REVIEW SUP	AS615	1	P3		
509400	COORDINATOR	UN				
100300	CUSTODIAN 1	WS202				
100270	CUSTODIAN 2	WS203				
175910	CUSTODIAN 3	WS205				
175920	CUSTODIAN SUPERVISOR A	WS207	1			
119660	DEPUTY ASST SECRETARY 3	AS626	3	P4		
503040	DEPUTY SECRETARY (UNCL)	UN				
119690	DEPUTY UNDERSECRETARY 3	AS627	3	P4		
151980	DISTRICT SIGN SPEC 1	WS210				Maintenance-District Sign Spec
151990	DISTRICT SIGN SPEC 2	WS212				Maintenance-District Sign Spec
173370	DISTRICT SIGN SPEC LEADER	WS214				Maintenance-District Sign Spec
175900	DOTD ENFORCE ADMIN	PS121	3			DOTD Police General Order #320
175880	DOTD ENFORCE CAPTAIN	PS117	2			DOTD Police General Order #320
175870	DOTD ENFORCE LIEUTENANT	PS115	1			DOTD Police General Order #320
175890	DOTD ENFORCE MAJOR	PS119	2			DOTD Police General Order #320
175860	DOTD ENFORCE SERGEANT	PS113	1			DOTD Police General Order #320
175830	DOTD ENFORCEMENT AGENT 1	PS109				DOTD Police General Order #320

DOTD Training Requirements Catalog



CS Job	Job Title	GRADE	CS	LD	PC	Structured Training
175840	DOTD ENFORCEMENT AGENT 2	PS110				DOTD Police General Order #320
175850	DOTD ENFORCEMENT AGENT 3	PS111				DOTD Police General Order #320
172520	DOTD PROGRAM DIRECTOR	AS622	3	P4		
172510	DOTD PROGRAM MANAGER	AS620	2	P3		
172450	DOTD PROGRAM SPECIALIST 1	AS612		P1		
172460	DOTD PROGRAM SPECIALIST 2	AS613		P1		
172470	DOTD PROGRAM SPECIALIST 3	AS615		P2		
172480	DOTD PROGRAM SPECIALIST 4	AS617		P2		
172490	DOTD PROGRAM SPECIALIST 5	AS619		P2		
172500	DOTD PROGRAM SUPERVISOR	AS619	1	P3		
506600	DOTD SECRETARY (UNCL)	UN				
128770	ELECTRICIAN	WS212				Maintenance-Trades
155130	ELECTRICIAN SPEC FOREMAN	WS216	1			Maintenance-Trades
155140	ELECTRICIAN SPEC LEADER	WS215				Maintenance-Trades
155150	ELECTRICIAN SPECIALIST	WS213				Maintenance-Trades
131740	ELECTRONIC TECH	WS215				Maintenance-Trades
156750	ELECTRONIC TECH ADV	WS216				Maintenance-Trades
131750	ELECTRONIC TECH SUPV	WS218	1			Maintenance-Trades
132990	ELECTRONIC TECH TRAINEE	WS213				Maintenance-Trades
506980	EMERGENCY SERV COORD	UN				
109160	ENGINEER INTERN APPL	TS312		P1		Engineer Interns
107680	ENGINEER INTERN 1	TS312		P1		Engineer Interns
107690	ENGINEER INTERN 2	TS313		P1		Engineer Interns
109140	ENGINEER 3	TS314		P2		
109150	ENGINEER 4	TS316		P2		
165520	ENGINEER 5	TS317		P2		
165530	ENGINEER 6	TS319	1	P3		
165490	ENGINEER 6 DCL	TS319		P2		
109340	ENGINEER 7	TS320	2	P3		
109100	ENGINEER 8	TS322	3	P4		
171280	ENGINEER 9	TS323	3	P4		
109260	ENGINEER CHIEF ADM-DOTD	TS325	3	P4		
162790	ENGINEER DEPUTY ADM-DOTD	TS324	3	P4		
161000	ENGR TECHNICIAN 1	TS302			T	Engineering Technicians
161010	ENGR TECHNICIAN 2	TS304			T	Engineering Technicians
161240	ENGR TECHNICIAN 3	TS306			T	Engineering Technicians
161250	ENGR TECHNICIAN 4	TS308			T	Engineering Technicians
166230	ENGR TECHNICIAN 5	TS310		TE	T	Engineering Technicians
166250	ENGR TECHNICIAN 7	TS312	1	TE	T	Engineering Technicians
166260	ENGR TECHNICIAN DCL	TS312		TE	T	Engineering Technicians
141030	ENV IMPACT MANAGER 1	TS314	1	P3		
141750	ENV IMPACT MANAGER 2	TS316	1	P3		

DOTD Training Requirements Catalog



CS Job	Job Title	GRADE	CS	LD	PC	Structured Training
167000	ENV IMPACT SPEC - DCL	TS314		P2		
141060	ENV IMPACT SPEC 1	TS308		P1		
141050	ENV IMPACT SPEC 2	TS309		P2		
141740	ENV IMPACT SPEC 3	TS311		P2		
128810	EQUIP SUPERINTENDENT	WS218	2			Maintenance-Equipment
128800	EQUIPMENT INSPECTOR	WS214				Maintenance-Equipment
504180	EXEC DIRECTOR/SRA (UNC)	UN				
504160	EXEC SECRETARY (UNCL)	UN				
504170	EXECUTIVE COUNSEL	UN				
170000	FACIL PROJ ADMINISTRATOR	TS318	2	P3		
169850	FACIL PROJ PLAN 2	TS312		P1		
169860	FACIL PROJ PLAN 3	TS314		P2		
169870	FACIL PROJ SUPERVISOR	TS316	1	P3		
172280	FACILITY ASST MAINT MGR B	WS218	1			
172240	FACILITY MAINT MGR A	WS219	2			
172250	FACILITY MAINT MGR B	WS220	2			
174200	FERRYBOAT DECKHAND 1	WS209				Maintenance-Ferryboat
174210	FERRYBOAT DECKHAND 2	WS210				Maintenance-Ferryboat
174220	FERRYBOAT DECKHAND 3	WS212				Maintenance-Ferryboat
174280	FERRYBOAT OPERATION MGR A	WS221	2			Maintenance-Ferryboat
174290	FERRYBOAT OPERATION MGR B	WS222	2			Maintenance-Ferryboat
174270	FERRYBOAT OPERATION SUPER	WS220	1			Maintenance-Ferryboat
174230	FERRYBOAT OPERATOR 1	WS213				Maintenance-Ferryboat
174240	FERRYBOAT OPERATOR 2	WS215				Maintenance-Ferryboat
174250	FERRYBOAT OPERATOR 3	WS217				Maintenance-Ferryboat
174260	FERRYBOAT OPERATOR SENIOR	WS219				Maintenance-Ferryboat
173530	GIS ANALYST 1	TS308		P1		
173540	GIS ANALYST 2	TS309		P2		
173550	GIS ANALYST 3	TS312		P2		
173580	GIS MANAGER	TS316	2	P3		
173560	GIS SPECIALIST	TS314		P2		
173570	GIS SUPERVISOR	TS315	1	P3		
131930	GUARD	PS103				Maintenance-Trades
128940	HIGHWAY FOREMAN 1	WS215	1			Maintenance-Hwy Foreman 1
128950	HIGHWAY FOREMAN 2	WS216	1			Maintenance-Hwy Foreman 2
170800	HUMAN RES ANALYST A	AS612		P1		
170810	HUMAN RES ANALYST B	AS613		P1		
170820	HUMAN RES ANALYST C	AS615		P2		
170920	HUMAN RES DIRECTOR D	AS623	3	P4		
170940	HUMAN RES MANAGER A	AS619	2	P3		
170950	HUMAN RES MANAGER B	AS620	2	P3		
170960	HUMAN RES SPECIALIST	AS617		P2		

DOTD Training Requirements Catalog



CS Job	Job Title	GRADE	CS	LD	PC	Structured Training
170970	HUMAN RES SUPERVISOR	AS618	1	P3		
160670	HWY SIGN/PAVE MARK SUPV	WS217	1			Maintenance-Hwy Sign/Pave Mark
175590	IT SUPERVISOR	TS316	1	P3		
175480	IT TECH SPECIALIST 1	TS314		P2		
175490	IT TECH SPECIALIST 2	TS315		P2		
175470	IT TECH SUPPORT ANALYST 3	TS313		P2		
173680	ITS TECHNICIAN 1	WS215				Maintenance-ITS Techs
173690	ITS TECHNICIAN 2	WS216				Maintenance-ITS Techs
173700	ITS TECHNICIAN 3	WS218				Maintenance-ITS Techs
173730	ITS TECHNICIAN MANAGER	WS221	2			Maintenance-ITS Techs
173710	ITS TECHNICIAN SPECIALIST	WS219				Maintenance-ITS Techs
173720	ITS TECHNICIAN SUPERVISOR	WS220	1			Maintenance-ITS Techs
505080	LIAISON OFFICER	UN				
129230	MAINTENANCE FOREMAN	WS215	1			Maintenance-Trades
128650	MAINTENANCE REPAIRER 1	WS210				Maintenance-Trades
128640	MAINTENANCE REPAIRER 2	WS212				Maintenance-Trades
128630	MAINTENANCE REPR MASTER	WS213				Maintenance-Trades
172300	MAINTENANCE SUPERINTENDENT	WS217	1			Maintenance-Trades
125850	MANAGEMENT ANALYST 1	AS612		P1		
125860	MANAGEMENT ANALYST 2	AS614		P2		
103360	MECHANIC 1	WS210				Maintenance-Mechanics
103390	MECHANIC 2	WS212				Maintenance-Mechanics
103370	MECHANIC 3	WS213				Maintenance-Mechanics
103380	MECHANIC 4	WS214				Maintenance-Mechanics
103400	MECHANIC SUPERVISOR A	WS215	1			Maintenance-Mechanics
103410	MECHANIC SUPERVISOR B	WS217	1			Maintenance-Mechanics
103420	MECHANIC-BODY REPAIRER 1	WS212				Maintenance-Mechanics
103430	MECHANIC-BODY REPAIRER 2	WS214				Maintenance-Mechanics
103460	MOB EQUIP OPER 1	WS209				Maintenance-Mobile Equip Operator
103440	MOB EQUIP OPER 2	WS210				Maintenance-Mobile Equip Operator
102860	MOB EQUIP OPER HEAVY 1	WS213				Maintenance-Mobile Equip Operator
102890	MOB EQUIP OPER HEAVY 2	WS214				Maintenance-Mobile Equip Operator
800010	NON-STATE EMPLOYEE-ERP	none				
129410	OPERATING ENG FORE 2	WS215	1			
129420	OPERATING ENG MASTER	WS213				
129430	OPERATING ENGINEER 1	WS211				
129440	OPERATING ENGINEER 2	WS212				
130200	PAINTER	WS212				Maintenance-Trades
129450	PAINTER FOREMAN	WS215	1			Maintenance-Trades
130210	PAINTER MASTER	WS213				Maintenance-Trades
165640	PARALEGAL 1	AS612				
113470	PARALEGAL 2	AS614				

DOTD Training Requirements Catalog



CS Job	Job Title	GRADE	CS	LD	PC	Structured Training
134120	PARISH HWY MAIN SUPT	WS217	1			Maintenance-Parish Hwy Maint
505960	PLANNER	UN				
146330	PLUMBER/PIPEFIT MASTER	WS213				Maintenance-Trades
129500	PLUMBER/PIPEFITTER	WS212				Maintenance-Trades
126260	POLICY PLANNER 1	AS613		P1		
126270	POLICY PLANNER 2	AS615		P2		
126280	POLICY PLANNER 3	AS617		P2		
126250	POLICY PLANNER 4	AS619		P3		
171180	PRINTING MASTER OPERATOR	WS213				
171160	PRINTING OPERATOR 1	WS210				
171170	PRINTING OPERATOR 2	WS212				
103810	PRINTING SUPERINTENDENT	WS219	1			
171190	PRINTING SUPERVISOR	WS215	1			
174120	PROCUREMENT ANALYST 1	AS612		P1		
174130	PROCUREMENT ANALYST 2	AS613		P2		
174140	PROCUREMENT ANALYST 3	AS615		P2		
174190	PROCUREMENT DIRECTOR	AS622	3	P4		
174180	PROCUREMENT MANAGER	AS620	2	P3		
174170	PROCUREMENT PGM MANAGER	AS618	1	P3		
174150	PROCUREMENT SPECIALIST	AS616		P2		
174160	PROCUREMENT SUPERVISOR	AS617	1	P3		
116690	PROFESSIONAL CHEMIST 1	TS308		P1		
116700	PROFESSIONAL CHEMIST 2	TS309		P1		
116710	PROFESSIONAL CHEMIST 3	TS311		P2		
171870	PROJECT ANALYST 1	TS310		P1		Dist-Units 2xx see District ETs.
171880	PROJECT ANALYST 2	TS311		P2		Dist-Units 2xx see District ETs.
171890	PROJECT MANAGER	TS313		P2		Dist-Units 2xx see District ETs.
164850	PUBLIC INFO DIRECTOR 1	AS618	1	P3		
164860	PUBLIC INFO DIRECTOR 2	AS619	1	P3		
164870	PUBLIC INFO DIRECTOR 3	AS621	1	P3		
164820	PUBLIC INFO OFFICER 1	AS611		P1		
164830	PUBLIC INFO OFFICER 2	AS613		P1		
164840	PUBLIC INFO OFFICER 3	AS615		P2		
167180	R/W ADMINISTRATOR	AS624	3	P4		
167110	R/W AGENT 1	AS612		P1		
167120	R/W AGENT 2	AS613		P1		
167130	R/W AGENT 3	AS615		P2		
167140	R/W AGENT 4	AS617		P2		
168780	R/W APPRAISER 1	AS613		P1		
168790	R/W APPRAISER 2	AS614		P1		
168800	R/W APPRAISER 3	AS616		P2		
168810	R/W APPRAISER 4	AS617		P2		

DOTD Training Requirements Catalog



CS Job	Job Title	GRADE	CS	LD	PC	Structured Training
167170	R/W MANAGER	AS622	2	P3		
167150	R/W PROGRAM SPECIALIST	AS619	1	P3		
167160	R/W SUPERVISOR	AS620	1	P3		
155460	ROADSIDE DEV HERB APP	WS214				Maintenance-Roadside Devel
152580	ROADSIDE DEV DIST COOR TR	WS217		P1		Maintenance-Roadside Devel
108620	ROADSIDE DEV DIST COORD	WS218	1	P2		Maintenance-Roadside Devel
108610	ROADSIDE DEV MANAGER	WS219	1	P3		
129730	SHEET METAL FOREMAN	WS215	1			Maintenance-Sheet Metal
146840	SHEET METAL MASTER	WS213				Maintenance-Sheet Metal
129740	SHEET METAL WORKER	WS212				Maintenance-Sheet Metal
506710	SPECIAL ASSISTANT	UN				
507680	SPECIAL PROJ OFF	UN				
173460	STATEWIDE PROGRAM MGR 1	AS622	1	P3		
173470	STATEWIDE PROGRAM MGR 2	AS624	2	P3		
151960	SURVEYOR 1 - INTERN	TS312		P1		
158190	SURVEYOR 2 - INTERN	TS313		P1		
141370	SURVEYOR 3	TS314		P2		
166220	SURVEYOR 4	TS316		P2		
173990	SURVEYOR 5	TS317		P2		
165750	SURVEYOR ADMINISTR-DOTD	TS322	3	P4		
165760	SURVEYOR MANAGER	TS320	2	P3		
107920	SURVEYOR SUPERVISOR	TS318	1	P3		
129810	TRADE APPRENTICE	WS209				Maintenance-Trades
133350	TRANS PERMITS MANAGER	AS617	2	P3		
164700	TRANS PERMITS SPEC 1	AS607				
164690	TRANS PERMITS SPEC 2	AS609				
164710	TRANS PERMITS SPEC 3	AS610				
133550	TRANS PERMITS SUPV 1	AS613	1	P3		
133560	TRANS PERMITS SUPV 2	AS615	1	P3		
160680	TRANSPORTATION OPS MGR	WS219	2			Maintenance-Transport Ops Mgr
507540	UNDERSECRETARY (UNCL)	UN				
129830	WELDER	WS212				Maintenance-Trades
129840	WELDER FOREMAN	WS215	1			Maintenance-Trades
129850	WELDER MASTER	WS213				Maintenance-Trades



Structured Training for Engineering Technicians

All Engineering Technicians require the following basic training in their STP.

Basic Courses in all Engineering Technician Programs

Fundamental Training
DOTD STP Standard Specifications
DOTD STP Math Location and Design - Basic Math OR DOTD STP Math Construction Part 1
Other Required Training
DOTD STP Highway Plan Reading Vol 1
DOTD STP Highway Plan Reading Vol 2
DOTD STP English Grammar
DOTD STP Math Location and Design 1 - Algebra OR DOTD STP Math Construction Part 2
DOTD STP Math Location and Design 2 - Geometry and Trig OR no additional math

Section Engineering Technicians

All information contained in the main part of this Catalog also applies.

This catalog component is organized by Office and then Section.

Office of Engineering – Sections 19, 22, 23, 24, 25, 27, 28, 30, 33, 35, 36, 40, 64, 67, 80

Office of Operations – Sections 42, 45, 51

Office of Planning – Sections 21, 82, 85

New Sections, or sections not listed above who have Engineering Technician positions, should contact LTRC about developing a program for their section's Engineering Technicians.

Requirements

- Each Section will have their own program or programs.
- Each program will include the basic program required courses for Engineering Technicians, with either Construction Math or Location and Design Math.
- Each program will include a “Fundamental Training” section with at least Standard Specifications and the first Math in the math series for the program.
- Fundamental Training must be completed for an employee to be eligible for permanent status.
- See Structured Training Introduction and Overview earlier in the catalog for other information regarding eligibility for permanent status and training needed for advancement for Engineering Technicians. Some required by dates may be earlier than indicated in the programs.



Office of Engineering - Section 19

All of Section 19 is required to have:

- DOTD LP Hazardous Materials Full Course
- DOTD LP Hazardous Materials Annual Refresher WBT - Expires 1 year.

All Engineering Technician Job titles in Organization Units in Section 19.

19LABS: 50018527, 50020127, 50020128, 50020129, 50020131, 50020132, 50020133, 50020135, 50020136

DOTD Program ET-STP Section 19 - LTRC Labs

1.	Safety Training	Due Date: 13 weeks
1.01	DOTD STM Handling Hazardous Chemicals WBT	
1.02	DOTD STL Lab Safety Guidelines Section 19	
1.03	DOTD LP Power/Hand Tool Safety WBT	
1.04	DOTD LP Safe Driving WBT	
1.05	DOTD STEq Fork Lift Safety WBT	
2.	Fundamental Training	Due Date: 39 weeks
2.01	DOTD STP Math Construction Part 1	
2.02	DOTD STP Standard Specifications	
2.03	DOTD STW Basic Flagging Procedures	
3.	Engineering Technician 1	Due Date: 52 weeks
3.01	DOTD STL PE - Engr Tech 1 : 8 Perf Evals	
3.02	DOTD STP Highway Plan Reading Vol 1	
3.03	DOTD STP Highway Plan Reading Vol 2	
3.04	DOTD STW Traffic Control Through Maintenance Work Area	
4.	Engineering Technician 2	Due Date: 52 weeks
4.01	DOTD STL PE - Engr Tech 2 : 8 Perf Evals	
4.02	DOTD STP Math Construction Part 2	
5.	Engineering Technician 3	Due Date: 52 weeks
5.01	DOTD STL PE - Engr Tech 3 : 8 Perf Evals	
5.02	DOTD STP English Grammar	
6.	Engineering Technician 4	Due Date: 52 weeks
6.01	DOTD STL PE - Engr Tech 4 : 8 Perf Evals	

DOTD Curriculum STW Flagging Refresher

DOTD STW Basic Flagging Refresher WBT - Expires 4 years



Office of Engineering - Section 22

All of Section 22 is required to have:

DOTD LP Hazardous Materials Full Course

DOTD LP Hazardous Materials Annual Refresher WBT - Expires 1 year.

All Engineering Technician Job titles in Organization Units in Section 22, except unit 22-014.

22MATT: 50018824, 50018561, 50021851, 50021863, 50384551, 50021862, 50021859, 50021864, 50021865, 50021855, 50021870 and 22FOUN: 50021860

DOTD Program ET-STP Section 22 - Materials Lab

1.	Fundamental Training	Due Date: 52 weeks
1.01	DOTD STP Math Construction Part 1	
1.02	DOTD STP Standard Specifications	
2.	Engineering Technician 1	Due Date: 52 weeks
2.01	DOTD STL PE - Engr Tech 1 : 8 Perf Evals	
2.02	DOTD STP Highway Plan Reading Vol 1	
2.03	DOTD STP English Grammar	
3.	Engineering Technician 2	Due Date: 52 weeks
3.01	DOTD STL PE - Engr Tech 2 : 8 Perf Evals	
3.02	DOTD STP Highway Plan Reading Vol 2	
3.03	DOTD STP Math Construction Part 2	
3.04	DOTD STP Metric Measures	
4.	Engineering Technician 3	Due Date: 52 weeks
4.01	DOTD STL PE - Engr Tech 3 : 8 Perf Evals	
5.	Engineering Technician 4	Due Date: 52 weeks
5.01	DOTD STL PE - Engr Tech 4 : 8 Perf Evals	

All Engineering Technician Job Titles in Section 22 in Unit 22-024.

22FOUN: 50021860

DOTD Program ET-STP Section 22 - Materials Lab Field Operations

1.	Required Courses	Due Date: 208 weeks
1.01	DOTD STM Electrical 201 - Basic Electricity	
1.02	DOTD STC Density Testing for Embankment and Base Course WBT	
1.03	DOTD NU Radiation Safety	



All Engineering Technicians in Section 22 in Unit 22-014.

22MTSU: 50021861

DOTD Program ET-STP Section 22 - Materials Lab Standards Unit

1.	Fundamental Training	Due Date: 52 weeks
1.01	DOTD STP Standard Specifications	
1.02	DOTD STP Math Construction Part 1	
2.	Engineering Technician 1	Due Date: 52 weeks
2.01	DOTD STP English Grammar	
2.02	DOTD STP Highway Plan Reading Vol 1	
3.	Engineering Technician 2	Due Date: 52 weeks
3.01	DOTD STP Highway Plan Reading Vol 2	
3.02	DOTD STP Math Construction Part 2	
3.03	DOTD STP Metric Measures	
4.	Engineering Technician 3	Due Date: 52 weeks
4.01	DOTD LD Conflict Management	

Assign any CPTP courses to employees as desired.

Office of Engineering - Section 23

All Engineering Technician Job Titles in Section 23, Utilities

23UTIL: 50020156

DOTD Program ET-STP Section 23 – Right-of-Way

1.	Fundamental Training	Due Date: 52 weeks
1.01	DOTD STP Standard Specifications	
1.02	DOTD STP Math Construction Part 1	
2.	Engineering Technician 1	Due Date: 52 weeks
2.01	DOTD STP Highway Plan Reading Vol 1	
2.03	DOTD STC Surveying Introduction WBT	
3.	Engineering Technician 2	Due Date: 52 weeks
3.01	DOTD STP Math Construction Part 2	
3.02	DOTD STP English Grammar	
3.03	DOTD STP Highway Plan Reading Vol 2	



Office of Engineering - Section 24

All Engineering Technician Job Titles in Section 24

24ROAD: 50018534, 50024711, 50024712, 50024726, 50398201, 50398202, 50024713, 50024714, 50024715, 50402993, 50354659, 50488337, 50024716, 50024719, 50539934, 50024718, 50024717, 50317386, 50024720, 50024721, 50024722, 50024723, 50488388

DOTD Program ET-STP Section 24 – Road Design

1.	Fundamental Training	Due Date: 52 weeks
1.01	DOTD STP Standard Specifications	
1.02	DOTD STP Math Location and Design - Basic Math	
2.	Engineering Technician 1	Due Date: 52 weeks
2.01	DOTD STP Highway Plan Reading Vol 1	
2.02	DOTD STP Highway Plan Reading Vol 2	
2.03	DOTD STC Surveying Introduction WBT	
3.	Engineering Technician 2	Due Date: 52 weeks
3.01	DOTD STP Math Location and Design 1 - Algebra	
3.02	DOTD STD Highway Location and Design Part 1	
3.03	DOTD STD Highway Curves Part 1	
4.	Engineering Technician 3	Due Date: 104 weeks
4.01	DOTD STP Math Location and Design 2 - Geometry and Trig	
4.02	DOTD STP English Grammar	
4.03	DOTD STD Highway Location and Design Part 2	
4.04	DOTD STD Highway Location and Design Part 3	
4.05	DOTD STD Highway Curves Part 2	

GIS and CADD training can be assigned to employees by their supervisor.



Office of Engineering - Section 25

All Engineering Technician Job Titles in Section 25

25BRDG: 50018535, 50019547, 50019575, 50019579, 50024941, 50019576, 50019581, 50024940, 50019577, 50019584, 50019582, 50024939, 50019583, 50019580, 50019585, 50385189, 50385190

DOTD Program ET-STP Section 25 – Bridge Design

1.	Fundamental Training	Due Date: 52 weeks
1.01	DOTD STP Standard Specifications	
1.02	DOTD STP Math Location and Design - Basic Math	
2.	Engineering Technician 1	Due Date: 52 weeks
2.01	DOTD STP Highway Plan Reading Vol 1	
2.02	DOTD STP Highway Plan Reading Vol 2	
2.03	DOTD STC Surveying Introduction WBT	
3.	Engineering Technician 2	Due Date: 52 weeks
3.01	DOTD STP Math Location and Design 1 - Algebra	
3.02	DOTD STD Highway Curves Part 1	
4.	Engineering Technician 3	Due Date: 104 weeks
4.01	DOTD STP Math Location and Design 2 - Geometry and Trig	
4.02	DOTD STP English Grammar	
4.03	DOTD STD Highway Curves Part 2	

GIS and CADD training can be assigned to employees by their supervisor.



Office of Engineering - Section 27

All Engineering Technicians Job Titles in Section 27

27TRAF: 50336254, 50336228, 50336230, 50406283, 50336229, 50406278, 50406280

DOTD Program ET-STP Section 27 – Traffic Engineering

1.	Fundamental Training	Due Date: 52 weeks
1.01	DOTD STP Standard Specifications	
1.02	DOTD STP Math Location and Design - Basic Math	
1.03	DOTD LP Work Zone Safety WBT	
2.	Engineering Technician 1	Due Date: 52 weeks
2.01	DOTD STP Highway Plan Reading Vol 1	
2.02	DOTD STP Highway Plan Reading Vol 2	
2.03	DOTD STC Surveying Introduction WBT	
3.	Engineering Technician 2	Due Date: 52 weeks
3.01	DOTD STP Math Location and Design 1 - Algebra	
3.02	DOTD STP English Grammar	
3.03	DOTD ATSSA Traffic Control Technician (TCT) Louisiana Specific - Expires 4 years	
4.	Engineering Technician 3	Due Date: 104 weeks
4.01	DOTD STP Math Location and Design 2 - Geometry and Trig	
4.02	DOTD BP Tort Liability: Depositions and Employee as a Witness WBT	
4.03	DOTD ATSSA Traffic Control Design Specialist (TCDS)	

DOTD Curriculum ATSSA Traffic Control Technician

DOTD ATSSA Traffic Control Technician (TCT) Louisiana Specific - Expires 4 years
--



Office of Engineering - Section 28

All Engineering Technicians in Section 28.

28ENVI: 50018515, 50018782, 50356684, 50018783, 50018784, 50383258, 50616255

DOTD Program ET-STP Section 28 – Environmental

1.	Fundamental Training	Due Date: 52 weeks
1.01	DOTD STP Standard Specifications	
1.02	DOTD STP Math Construction Part 1	
2.	Engineering Technician 1	Due Date: 52 weeks
2.01	DOTD STP Highway Plan Reading Vol 1	
2.02	DOTD STP Highway Plan Reading Vol 2	
2.03	DOTD STC Surveying Introduction WBT	
3.	Engineering Technician 2	Due Date: 52 weeks
3.01	DOTD STP Math Construction Part 2	
3.02	DOTD STP English Grammar	
3.03	DOTD STD Highway Curves Part 1	



Office of Engineering - Section 30

GIS and CADD training can be assigned to employees by their supervisor.

All Engineering Technicians Job Titles in Section 30 – Units 003 and 004.

30BOCH: 50020660, 50024176, 50398209, 50020725

DOTD Program ET-STP Section 30 – Survey Boundary Checking

1.	Fundamental Training	Due Date: 52 weeks
1.01	DOTD STP Standard Specifications	
1.02	DOTD STP Math Location and Design - Basic Math	
1.03	DOTD STC Surveying Introduction WBT	
1.04	DOTD LP Boating Safety Course WBT-External	
2.	Engineering Technician 1	Due Date: 52 weeks
2.01	DOTD STP Highway Plan Reading Vol 1	
2.02	DOTD STP Highway Plan Reading Vol 2	
3.	Engineering Technician 2	Due Date: 52 weeks
3.01	DOTD STP Math Location and Design 1 - Algebra	
3.02	DOTD STP English Grammar	
3.03	DOTD ATSSA Traffic Control Technician (TCT) Louisiana Specific - Expires 4 years	
4.	Engineering Technician 3	Due Date: 52 weeks
4.01	DOTD STP Math Location and Design 2 - Geometry and Trig	
5.	Engineering Technician 4	Due Date: 104 weeks
5.01	DOTD STD US Land Surveys Part 1	
5.02	DOTD STD US Land Surveys Part 2	
5.03	DOTD STD Fundamentals of Law for Surveyors	
5.04	DOTD STD Highway Curves Part 1	

DOTD Curriculum ATSSA Traffic Control Technician

DOTD ATSSA Traffic Control Technician (TCT) Louisiana Specific - Expires 4 years
--

DOTD Safety- Boating Safety Refresher

DOTD LP Boating Safety Refresher WBT - Expires 3 years
--



All Engineering Technicians in Section 30 – Units 005 and 006.

30LSFC: 50496764, 50020726

DOTD Program ET-STP Section 30 – Survey Field Crew

1.	Fundamental Training	Due Date: 52 weeks
1.01	DOTD STP Standard Specifications	
1.02	DOTD STP Math Location and Design - Basic Math	
1.03	DOTD STC Surveying Introduction WBT	
1.04	DOTD LP Boating Safety Course WBT-External	
2.	Engineering Technician 1	Due Date: 52 weeks
2.01	DOTD STP Highway Plan Reading Vol 1	
2.02	DOTD STP Highway Plan Reading Vol 2	
3.	Engineering Technician 2	Due Date: 52 weeks
3.01	DOTD STP Math Location and Design 1 - Algebra	
3.02	DOTD STP English Grammar	
3.03	DOTD ATSSA Traffic Control Technician (TCT) Louisiana Specific - Expires 4 years	
4.	Engineering Technician 3	Due Date: 52 weeks
4.01	DOTD STP Math Location and Design 2 - Geometry and Trig	
4.02	DOTD STC Construction Leveling	
5.	Engineering Technician 4	Due Date: 104 weeks
5.01	DOTD STD Fundamentals of Law for Surveyors	
5.02	DOTD STD Highway Curves Part 1	

DOTD Curriculum ATSSA Traffic Control Technician

DOTD ATSSA Traffic Control Technician (TCT) Louisiana Specific - Expires 4 years
--

DOTD Safety- Boating Safety Refresher

DOTD LP Boating Safety Refresher WBT - Expires 3 years
--



Office of Engineering - Section 33

All Engineering Technicians in Section 33.

33TECH: 50018528, 50020140, 50020144, 50020145, 50020146, 50397188

The jobs in Section 33 are filled at the DCL level.

DOTD Program ET-STP Section 33 – Concrete and Asphalt DCLs

1.	Fundamental Training	Due Date: 52 weeks
1.01	DOTD STP Standard Specifications	
1.02	DOTD STP Math Construction Part 1	
1.03	DOTD STP Math Construction Part 2	
1.04	DOTD STP Highway Plan Reading Vol 1	
1.05	DOTD STP Highway Plan Reading Vol 2	
1.06	DOTD STP English Grammar	
1.07	DOTD STW Basic Flagging	
1.08	DOTD ATSSA Traffic Control Technician (TCT) Louisiana Specific - Expires 4 years	
2.	Specialty Areas and Certifications – Based on job	
2.01	Two Specialty areas and two Certifications from the list below are required. The supervisor will assign the appropriate ones based on the employee's job duties.	

DOTD Curriculum STW Flagging Refresher

DOTD STW Basic Flagging Refresher WBT - Expires 4 years

DOTD Curriculum ATSSA Traffic Control Technician

DOTD ATSSA Traffic Control Technician (TCT) Louisiana Specific - Expires 4 years
--

Assignments to Specialty Areas and Certifications are made individually based on job duties.

Specialty Areas	Certifications
DOTD-AREA Embankment and Base Course	DOTD-CERT Embankment and Base Course - expires 5 years
DOTD-AREA ACM Paving	DOTD-CERT ACM Paving - expires 5 years
DOTD-AREA ACM Plant Technician	DOTD-AUTH ACM Plant Technician
DOTD-AREA ACM Plant Inspection	DOTD-CERT ACM Plant - expires 5 years
DOTD-AREA PCC Paving	DOTD-CERT PCC Paving - expires 5 years
DOTD-AREA PCC Plant	DOTD-CERT PCC Plant - expires 5 years
DOTD-AREA Structural Concrete	DOTD-CERT Structural Concrete - expires 5 years

Lab Performance Evaluations can be assigned if needed.

DOTD STL PE - Engr Tech 1 : Perf Evals
 DOTD STL PE - Engr Tech 2 : Perf Evals
 DOTD STL PE - Engr Tech 3 : Perf Evals
 DOTD STL PE - Engr Tech 4 : Perf Evals



Office of Engineering - Section 35

All Engineering Technicians in Section 35.

35CRTP: 50607759, 50337849, 50020148, 50020142, 50020141

DOTD Program ET-STP Section 35 – Critical Projects

1.	Fundamental Training	Due Date: 52 weeks
1.01	DOTD STP Standard Specifications	
1.02	DOTD STP Math Location and Design - Basic Math	
2.	Engineering Technician 1	Due Date: 52 weeks
2.01	DOTD STP Math Location and Design 1 - Algebra	
2.02	DOTD STP English Grammar	
2.03	DOTD STP Highway Plan Reading Vol 1	
3.	Engineering Technician 2	Due Date: 52 weeks
3.01	DOTD STP Math Location and Design 2 - Geometry and Trig	
3.02	DOTD STP Highway Plan Reading Vol 2	

Office of Engineering - Section 36

All Engineering Technicians in Section 36

50647276, 50647277, 50647278

DOTD Program ET-STP Section 36 – Plan Quality and Publications

1.	Fundamental Training	Due Date: 52 weeks
1.01	DOTD STP Standard Specifications	
1.02	DOTD STP Math Construction Part 1	
2.	Engineering Technician 1	Due Date: 52 weeks
2.01	DOTD STP Highway Plan Reading Vol 1	
2.02	DOTD STP English Grammar	
3.	Engineering Technician 2	Due Date: 52 weeks
3.01	DOTD STP Highway Plan Reading Vol 2	
3.02	DOTD STP Math Construction Part 2	



Office of Engineering - Section 40

All Engineering Technicians in Section 40 except units 004 and 005.

40ESTI-Units 001, 002, and 003: 50021837, 50021843, 50021840, 50021845

DOTD Program ET-STP Section 40 – Construction

1.	Fundamental Training	Due Date: 52 weeks
1.01	DOTD STP Standard Specifications	
1.02	DOTD STP Math Construction Part 1	
2.	Engineering Technician 1	Due Date: 52 weeks
2.01	DOTD STP Highway Plan Reading Vol 1	
2.02	DOTD STP English Grammar	
3.	Engineering Technician 2	Due Date: 52 weeks
3.01	DOTD STP Highway Plan Reading Vol 2	
3.02	DOTD STP Math Construction Part 2	

All Engineering Technicians Job Titles in Section 40 – Unit 004.

40CEST: Units 004: 50021841, 50021846, 50021847, 50021848

DOTD Program ET-STP Section 40 – Construction Estimates

1.	Fundamental Training	Due Date: 52 weeks
1.01	DOTD STP Standard Specifications	
1.02	DOTD STP Math Construction Part 1	
2.	Engineering Technician 1	Due Date: 52 weeks
2.01	DOTD STP Highway Plan Reading Vol 1	
2.02	DOTD STP English Grammar	
3.	Engineering Technician 2	Due Date: 52 weeks
3.01	DOTD STP Highway Plan Reading Vol 2	
3.02	DOTD STP Math Construction Part 2	
4.	Engineering Technician 3	Due Date: 52 weeks
4.01	DOTD STC ACM Paving Inspection Vol 1	
4.02	DOTD STC ACM Paving Inspection Vol 2	
5.	Engineering Technician 4	Due Date: 52 weeks
5.01	DOTD STC PCC Paving Introduction WBT	
5.02	DOTD STC Structural Concrete Inspection Vol 1	
5.03	DOTD STC Structural Concrete Inspection Vol 2	



All Engineering Technicians in Section 40 – Unit 005.

40CFAB-Units 005: 50021842, 50025013, 50025015

DOTD Program ET-STP Section 40 – Construction Fabrication

1.	Fundamental Training	Due Date: 52 weeks
1.01	DOTD STP Standard Specifications	
1.02	DOTD STP Math Construction Part 1	
2.	Engineering Technician 1	Due Date: 52 weeks
2.01	DOTD STP Highway Plan Reading Vol 1	
2.02	DOTD STP English Grammar	
3.	Engineering Technician 2	Due Date: 52 weeks
3.01	DOTD STP Highway Plan Reading Vol 2	
3.02	DOTD STP Math Construction Part 2	
4.	Engineering Technician 3	Due Date: 52 weeks
4.01	DOTD STC Structural Concrete Inspection Vol 1	
4.02	DOTD STC Structural Concrete Inspection Vol 2	
5.	Engineering Technician 4	Due Date: 52 weeks
5.01	DOTD STC Welding Inspection Quality Control	
5.02	DOTD STC PCC Plant Inspection	

Office of Engineering - Section 64

All Engineering Technicians in Section 64.

64DLRD: 50018599, 50018601, 50322354, 50382985, 50382987, 50382988

DOTD Program ET-STP Section 64 – Dams and Levees

1.	Fundamental Training	Due Date: 52 weeks
1.01	DOTD STP Standard Specifications	
1.02	DOTD STP Math Location and Design - Basic Math	
2.	Engineering Technician 1	Due Date: 52 weeks
2.01	DOTD STP Highway Plan Reading Vol 1	
2.02	DOTD STP Highway Plan Reading Vol 2	
3.	Engineering Technician 2	Due Date: 52 weeks
3.01	DOTD STP Math Location and Design 1 - Algebra	
3.02	DOTD STP English Grammar	
4.	Engineering Technician 3	Due Date: 52 weeks
4.01	DOTD STP Math Location and Design 2 - Geometry and Trig	



Office of Engineering - Section 67

Office of Engineering - Section 67

All Engineering Technicians in Section 67.

67BRDG: 50349627, 50349629, 50349630, 50382166, 50361174

DOTD Program ET-STP Section 67 – Pavement/Geotechnical

1.	Fundamental Training	Due Date: 52 weeks
1.01	DOTD STP Standard Specifications	
1.02	DOTD STP Math Location and Design - Basic Math	
2.	Engineering Technician 1	Due Date: 52 weeks
2.01	DOTD STP Highway Plan Reading Vol 1	
2.02	DOTD STP Highway Plan Reading Vol 2	
3.	Engineering Technician 2	Due Date: 52 weeks
3.01	DOTD STP Math Location and Design 1 - Algebra	
3.02	DOTD STP English Grammar	
4.	Engineering Technician 3	Due Date: 52 weeks
4.01	DOTD STP Math Location and Design 2 - Geometry and Trig	

Office of Engineering - Section 80

All Engineering Technicians in Section 80.

80PROJ- 50018536, 50024942, 50018550, 50018895, 50018897, 50398080, 50398081, 50018549, 50018893, 50398082

DOTD Program ET-STP Section 80 – Contract Services

1.	Fundamental Training	Due Date: 52 weeks
1.01	DOTD STP Standard Specifications	
1.02	DOTD STP Math Location and Design - Basic Math	
2.	Engineering Technician 1	Due Date: 52 weeks
2.01	DOTD STP Highway Plan Reading Vol 1	
2.02	DOTD STP Highway Plan Reading Vol 2	
3.	Engineering Technician 2	Due Date: 52 weeks
3.01	DOTD STP Math Location and Design 1 - Algebra	
3.02	DOTD STP English Grammar	

Assign to individuals as desired.

DOTD NHI 134037A - Managing Highway Contract Claims



Office of Operations - Section 42

All Engineering Technicians Jobs in Section 42, Units 001-069.

42RDMU – 50018565, 50397972, 50451028, 50406580, 50018571, 50398388, 50569937, 50018574, 50400147, 50613947, 50408877

DOTD Program ET-STP Section 42 – Road Maintenance

1.	Fundamental Training	Due Date: 52 weeks
1.01	DOTD STP Standard Specifications	
1.02	DOTD STP Math Construction Part 1	
2.	Engineering Technician 1	Due Date: 52 weeks
2.01	DOTD STP English Grammar	
2.02	DOTD STP Highway Plan Reading Vol 1	
3.	Engineering Technician 2	Due Date: 52 weeks
3.01	DOTD STP Highway Plan Reading Vol 2	
3.02	DOTD STP Math Construction Part 2	
3.03	DOTD STM Maintenance Activity Guide and Manual Study Guide	
3.04	DOTD BP Tort Liability: Depositions and Employee as a Witness WBT	



Office of Operations - Section 45

All Engineering Technicians in Section 45 – Units 00x.

45TRES – 50374045, 50399401, 50400085, 50400087, 50020486, 50496304, 50496305, 50399403, 50400118, 50400119, 50400120, 50673155

DOTD Program ET-STP Section 45 – Traffic Services

1.	Fundamental Training	Due Date: 52 weeks
1.01	DOTD STP Standard Specifications	
1.02	DOTD STP Math Construction Part 1	
1.03	DOTD STW Basic Flagging Procedures	
1.04	DOTD STM Handling Hazardous Chemicals WBT	
2.	Engineering Technician 1	Due Date: 52 weeks
2.01	DOTD STP Highway Plan Reading Vol 1	
2.02	DOTD STP English Grammar	
3.	Engineering Technician 2	Due Date: 52 weeks
3.01	DOTD STP Math Construction Part 2	
3.02	DOTD STP Highway Plan Reading Vol 2	
3.03	DOTD STM Maintenance Activity Guide and Manual Study Guide	
3.04	DOTD STM Tort Liability for Maintenance WBT	
3.05	DOTD BP Tort Liability: Depositions and Employee as a Witness WBT	

DOTD Curriculum STW Flagging Refresher

DOTD STW Basic Flagging Refresher WBT - Expires 4 years



Office of Operations - Section 51

All Engineering Technicians in Section 51, Unit 002.

51BIQA ET DCLs in – 50018566, 50397975, 50400092, 50400097, 5040098

DOTD Program ET-STP Section 51 – Bridge Maintenance

1.	Fundamental Training	Due Date: 52 weeks
1.01	DOTD STP Standard Specifications	
1.02	DOTD STP Math Location and Design - Basic Math	
2.	Engineering Technician 1	Due Date: 52 weeks
2.01	DOTD STP Highway Plan Reading Vol 1	
2.02	DOTD STP Highway Plan Reading Vol 2	
2.03	DOTD STC Surveying Introduction WBT	
3.	Engineering Technician 2	Due Date: 52 weeks
3.01	DOTD STP Math Location and Design 1 - Algebra	
3.02	DOTD STD Highway Curves Part 1	
4.	Engineering Technician 3	Due Date: 52 weeks
4.01	DOTD STP Math Location and Design 2 - Geometry and Trig	
4.02	DOTD STP English Grammar	
4.03	DOTD STD Highway Curves Part 2	

Follow same training requirements as the Bridge Inspectors found under Maintenance Jobs.

161000	ENGR TECHNICIAN 1	Same as Bridge Inspector 1
161010	ENGR TECHNICIAN 2	Same as Bridge Inspector 2
161240	ENGR TECHNICIAN 3	Same as Bridge Inspector 3
161250	ENGR TECHNICIAN 4	Same as Bridge Inspector 4



Office of Planning - Section 21

All Engineering Technicians in Section 21 except Unit 003.

21INVT – 50018513, 50418014, 50018822, 50018824

DOTD Program ET-STP Section 21 – Data Collection

1.	Fundamental Training	Due Date: 52 weeks
1.01	DOTD STP Standard Specifications	
1.02	DOTD STP Math Construction Part 1	
2.	Engineering Technician 1	Due Date: 52 weeks
2.01	DOTD STP English Grammar	
2.02	DOTD STP Highway Plan Reading Vol 1	
2.03	DOTD STC Surveying Introduction WBT	
3.	Engineering Technician 2	Due Date: 52 weeks
3.01	DOTD STP Highway Plan Reading Vol 2	
3.02	DOTD STP Math Construction Part 2	

Engineering Technicians in Section 21 Unit 003.

21xxxx – 50018823, 50382953, 50382954

DOTD Program ET-STP Section 21 – Data Collection Unit 003

1.	Fundamental Training	Due Date: 52 weeks
1.01	DOTD STP Standard Specifications	
1.02	DOTD STP Math Construction Part 1	
1.03	DOTD STW Basic Flagging Procedures	
2.	Engineering Technician 1	Due Date: 52 weeks
2.01	DOTD STP English Grammar	
2.02	DOTD STP Highway Plan Reading Vol 1	
2.03	DOTD STC Surveying Introduction WBT	
2.04	DOTD STW Traffic Control Through Maintenance Work Area	
3.	Engineering Technician 2	Due Date: 52 weeks
3.01	DOTD STP Highway Plan Reading Vol 2	
3.02	DOTD STP Math Construction Part 2	

DOTD Curriculum STW Flagging Refresher

DOTD STW Basic Flagging Refresher WBT - Expires 4 years



Office of Planning - Section 82

All Engineering Technicians in Section 82.

82HWSA – 50332938, 50382950, 50653701

DOTD Program ET-STP Section 82 – Highway Safety

1.	Fundamental Training	Due Date: 52 weeks
1.01	DOTD STP Standard Specifications	
1.02	DOTD STP Math Construction Part 1	
1.03	DOTD STW Work Zone TTC Safety WBT	
2.	Engineering Technician 1	Due Date: 52 weeks
2.01	DOTD STP English Grammar	
2.02	DOTD STP Highway Plan Reading Vol 1	
2.03	DOTD STC Surveying Introduction WBT	
3.	Engineering Technician 2	Due Date: 52 weeks
3.01	DOTD STP Highway Plan Reading Vol 2	
3.02	DOTD STP Math Construction Part 2	
3.03	DOTD STM Tort Liability for Maintenance WBT	
3.04	DOTD BP Tort Liability: Depositions and Employee as a Witness WBT	

Office of Planning - Section 85

All Engineering Technicians in Section 85.

85GISC – 50333811, 50023807, 50324891, 50020961, 50020962

DOTD Program ET-STP Section 85 – GIS-Cartography

1.	Fundamental Training	Due Date: 52 weeks
1.01	DOTD STP Standard Specifications	
1.02	DOTD STP Math Location and Design - Basic Math	
2.	Engineering Technician 1	Due Date: 52 weeks
2.01	DOTD STP Highway Plan Reading Vol 1	
2.02	DOTD STP Highway Plan Reading Vol 2	
3.	Engineering Technician 2	Due Date: 52 weeks
3.01	DOTD STP Math Location and Design 1 - Algebra	
3.02	DOTD STP English Grammar	
4.	Engineering Technician 3	Due Date: 52 weeks
4.01	DOTD STP Math Location and Design 2 - Geometry and Trig	

GIS and CADD training can be assigned to employees by their supervisor.



District Engineering Technicians

All information contained in the main part of this Catalog also applies.

Technicians requiring the Location and Design Math track (Units 002, 003, and 170)

- DISTRICT DESIGN - CONTRACTS AND SPECS (D-CNSP)
- DISTRICT DESIGN - ROAD DESIGN (D-ROAD)
- DISTRICT DESIGN - SURVEY (D-SURV)
- DISTRICT TRAFFIC ENGINEERING (T-TRAF)

Technicians requiring the Construction Math with Specialty Areas track (Units 15x, 2xx and Trainers)

Separate Section following this one details the programs, Specialty Areas, Authorizations and Certifications.

- DISTRICT CONSTRUCTION INSPECTORS (C-INSP)
- DISTRICT LABORATORY (L-DLAB)
- DISTRICT OFFICE TECHNICIANS (C-INSO or L-LABO)
- DISTRICT TRAINING TECHNICIANS (A-TRNG)

Technicians not in either above require Construction Math track. (Does not fit either criteria above)

- DISTRICT UTILITY PERMITS (A-UTPR)
- DISTRICT RAIL COORDINATOR (A-RAIL)
- AREA ENGINEER ASSISTANTS (Districts 03 and 61)



Districts-Location Specific Training Requirements

District Utility Permits (A-UTPR)

Org Units: as specified by districts. Predominately in units 500.

DOTD Program ET-STP District Utility Permits

1.	Safety Training	Due Date: 13 weeks
1.01	DOTD LP Electrocution Prevention WBT	
1.02	DOTD LP Heat Stress WBT	
1.03	DOTD LP Poisonous Plant Safety WBT	
1.04	DOTD LP Safe Driving WBT	
1.05	DOTD STW Work Zone TTC Safety WBT	
1.06	DOTD STW Basic Flagging Procedures	
2.	Fundamental Training	Due Date: 39 weeks
2.01	DOTD STP Standard Specifications	
2.02	DOTD STP Math Construction Part 1	
3.	Engineering Technician 1	Due Date: 52 weeks
3.01	DOTD STP English Grammar	
3.02	DOTD STP Highway Plan Reading Vol 1	
4.	Engineering Technician 2	Due Date: 52 weeks
4.01	DOTD STP Highway Plan Reading Vol 2	
4.02	DOTD STP Math Construction Part 2	
4.03	DOTD BP Tort Liability: Depositions and Employee as a Witness WBT	
4.04	DOTD STC Surveying Introduction WBT	
4.05	DOTD STC Basic Pipe Installation	
4.06	DOTD STC Construction Leveling	
5.	Engineering Technician 3	Due Date: 52 weeks
5.01	DOTD ATSSA Traffic Control Technician (TCT) Louisiana Specific - Expires 4 years	

DOTD Curriculum STW Flagging Refresher

DOTD STW Basic Flagging Refresher WBT - Expires 4 years

ATSSA TCT and TCS:

At ET 3: DOTD ATSSA Traffic Control Technician (TCT) Louisiana Specific - Expires 4 years

At ET 5: DOTD ATSSA Traffic Control Supervisor (TCS) Louisiana Specific - Expires 4 years

Will be in appropriate curriculum:

DOTD Curriculum ATSSA Traffic Control Technician

OR **DOTD Curriculum ATSSA Traffic Control Supervisor Refresher**



District Design – Contracts and Specs (D-CNSP)

Assigned to specific organizational units in District Units 170.

DOTD Program ET-STP District Design Contracts and Specs

1.	Safety Training	Due Date: 13 weeks
1.01	DOTD LP Electrocution Prevention WBT	
1.02	DOTD LP Heat Stress WBT	
1.03	DOTD LP Poisonous Plant Safety WBT	
1.04	DOTD LP Safe Driving WBT	
1.05	DOTD STW Work Zone TTC Safety WBT	
2.	Fundamental Training	Due Date: 39 weeks
2.01	DOTD STP Standard Specifications	
2.02	DOTD STP Math Location and Design - Basic Math	
3.	Engineering Technician 1	Due Date: 52 weeks
3.01	DOTD STP Math Location and Design 1 - Algebra	
3.02	DOTD STP English Grammar	
3.03	DOTD STP Highway Plan Reading Vol 1	
4.	Engineering Technician 2	Due Date: 52 weeks
4.01	DOTD STP Math Location and Design 2 - Geometry and Trig	
4.02	DOTD STP Highway Plan Reading Vol 2	
5.	Engineering Technician 3	Due Date: 52 weeks
5.01	DOTD LD Professional Writing	
5.02	DOTD STC Surveying Introduction WBT	
6.	Engineering Technician 4	Due Date: 52 weeks
6.01	DOTD STD Highway Location and Design Part 1	
6.02	DOTD STD Highway Location and Design Part 2	



District Design – Road Design (D-ROAD)

Assigned to specific organizational units in District Units 170.

DOTD Program - District Design Road Design

1.	Safety Training	Due Date: 13 weeks
1.01	DOTD LP Electrocutation Prevention WBT	
1.02	DOTD LP Heat Stress WBT	
1.03	DOTD LP Poisonous Plant Safety WBT	
1.04	DOTD LP Safe Driving WBT	
1.05	DOTD STW Work Zone TTC Safety WBT	
1.06	DOTD STW Basic Flagging Procedures	
2.	Fundamental Training	Due Date: 39 weeks
2.01	DOTD STP Standard Specifications	
2.02	DOTD STP Math Location and Design - Basic Math	
2.03	DOTD STC Surveying Introduction WBT	
3.	Engineering Technician 1	Due Date: 52 weeks
3.01	DOTD STP Math Location and Design 1 - Algebra	
3.02	DOTD STP English Grammar	
3.03	DOTD STP Highway Plan Reading Vol 1	
4.	Engineering Technician 2	Due Date: 52 weeks
4.01	DOTD STP Math Location and Design 2 - Geometry and Trig	
4.02	DOTD STP Highway Plan Reading Vol 2	
4.03	DOTD STD Highway Location and Design Part 1	
4.04	DOTD STD Highway Curves Part 1	
5.	Engineering Technician 3	Due Date: 52 weeks
3.01	DOTD STD Highway Location and Design Part 2	
3.02	DOTD STD Highway Curves Part 2	
3.03	DOTD ATSSA Traffic Control Technician (TCT) Louisiana Specific - Expires 4 years	
3.04	DOTD ATSSA Traffic Control Design Specialist (TCDS)	
6.	Engineering Technician 4	Due Date: 52 weeks
6.01	DOTD STD Highway Location and Design Part 3	
6.02	DOTD NHI 380032A Roadside Safety Design Course	

DOTD Curriculum STW Flagging Refresher

DOTD STW Basic Flagging Refresher WBT - Expires 4 years

ATSSA TCT and TCS:

At ET 3: DOTD ATSSA Traffic Control Technician (TCT) Louisiana Specific - Expires 4 years

DOTD Curriculum ATSSA Traffic Control Technician



District Design - Survey (D-SURV)

Assigned to specific organizational units in District Units 170.

DOTD Program ET-STP District Design Survey

1.	Safety Training	Due Date: 13 weeks
1.01	DOTD LP Electrocutation Prevention WBT	
1.02	DOTD LP Heat Stress WBT	
1.03	DOTD LP Poisonous Plant Safety WBT	
1.04	DOTD LP Safe Driving WBT	
1.05	DOTD STW Work Zone TTC Safety WBT	
1.06	DOTD STW Basic Flagging Procedures	
2.	Fundamental Training	Due Date: 39 weeks
2.01	DOTD STP Standard Specifications	
2.02	DOTD STP Math Location and Design - Basic Math	
2.03	DOTD STC Surveying Introduction WBT	
3.	Engineering Technician 1	Due Date: 52 weeks
3.01	DOTD STP Math Location and Design 1 - Algebra	
3.02	DOTD STP English Grammar	
3.03	DOTD STP Highway Plan Reading Vol 1	
3.04	DOTD LP Boating Safety Course WBT-External	
4.	Engineering Technician 2	Due Date: 52 weeks
4.01	DOTD STP Math Location and Design 2 - Geometry and Trig	
4.02	DOTD STP Highway Plan Reading Vol 2	
4.03	DOTD STC Construction Leveling	
5.	Engineering Technician 3	Due Date: 52 weeks
5.01	DOTD STD Highway Curves Part 1	
5.02	DOTD STV US Land Surveys Part 1	
5.03	DOTD ATSSA Traffic Control Technician (TCT) Louisiana Specific - Expires 4 years	
6.	Engineering Technician 4	Due Date: 52 weeks
6.01	DOTD STV Fundamentals of Law for Surveyors	
6.02	DOTD STV US Land Surveys Part 2	
6.03	DOTD STD Highway Curves Part 2	



DOTD Curriculum STW Flagging Refresher

DOTD STW Basic Flagging Refresher WBT - Expires 4 years

DOTD Safety- Boating Safety Refresher

DOTD LP Boating Safety Refresher WBT - Expires 3 years
--

ATSSA TCT and TCS:

At ET 3: *DOTD ATSSA Traffic Control Technician (TCT) Louisiana Specific - Expires 4 years*

At ET 5: *DOTD ATSSA Traffic Control Supervisor (TCS) Louisiana Specific - Expires 4 years*

Will be in appropriate curriculum:

DOTD Curriculum ATSSA Traffic Control Technician

OR ***DOTD Curriculum ATSSA Traffic Control Supervisor Refresher***

Old program D-WWDM people were placed in the DISTRICT DESIGN – SURVEY program.



District Traffic Engineering (T-TRAF)

All districts, units 002 and 003 - Based on Organizational Units

DOTD Program ET-STP District Traffic Engineering

1.	Safety Training	Due Date: 13 weeks
1.01	DOTD LP Electrocution Prevention WBT	
1.02	DOTD LP Heat Stress WBT	
1.03	DOTD LP Poisonous Plant Safety WBT	
1.04	DOTD LP Safe Driving WBT	
1.05	DOTD STW Work Zone TTC Safety WBT	
1.06	DOTD STW Basic Flagging Procedures	
1.07	DOTD STM Handling Hazardous Chemicals WBT	
2.	Fundamental Training	Due Date: 39 weeks
2.01	DOTD STP Standard Specifications	
2.02	DOTD STP Math Location and Design - Basic Math	
3.	Engineering Technician 1	Due Date: 52 weeks
3.01	DOTD STP Math Location and Design 1 - Algebra	
3.02	DOTD STP English Grammar	
3.03	DOTD STP Highway Plan Reading Vol 1	
4.	Engineering Technician 2	Due Date: 52 weeks
4.01	DOTD STP Math Location and Design 2 - Geometry and Trig	
4.02	DOTD STP Highway Plan Reading Vol 2	
4.03	DOTD ATSSA Traffic Control Technician (TCT) Louisiana Specific - Expires 4 years	
5.	Engineering Technician 3	Due Date: 52 weeks
5.01	DOTD ATSSA Traffic Control Design Specialist (TCDS)	
5.02	DOTD BP Tort Liability: Depositions and Employee as a Witness WBT	
5.03	DOTD STM Tort Liability for Maintenance	

DOTD Curriculum STW Flagging Refresher

DOTD STW Basic Flagging Refresher WBT - Expires 4 years

ATSSA TCT and TCS:

At ET 3: DOTD ATSSA Traffic Control Technician (TCT) Louisiana Specific - Expires 4 years

At ET 5: DOTD ATSSA Traffic Control Supervisor (TCS) Louisiana Specific - Expires 4 years

Will be in appropriate curriculum:

DOTD Curriculum ATSSA Traffic Control Technician

OR **DOTD Curriculum ATSSA Traffic Control Supervisor Refresher**



District Rail Coordinator (A-RAIL)

Manually assign.

DOTD Program ET-STP District Rail Coordinator

Due Date: 3 years

1.	Safety Training	Due Date: 13 weeks
1.01	DOTD LP Electrocutation Prevention WBT	
1.02	DOTD LP Heat Stress WBT	
1.03	DOTD LP Poisonous Plant Safety WBT	
1.04	DOTD LP Safe Driving WBT	
1.05	DOTD STW Work Zone TTC Safety WBT	
1.06	DOTD STW Basic Flagging Procedures	
1.07	DOTD STM Handling Hazardous Chemicals WBT	
2.	Fundamental Training	Due Date: 39 weeks
2.01	DOTD STP Standard Specifications	
2.02	DOTD STP Math Construction Part 1	
3.	Engineering Technician 1	Due Date: 52 weeks
3.01	DOTD STP English Grammar	
3.02	DOTD STP Highway Plan Reading Vol 1	
4.	Engineering Technician 2	Due Date: 52 weeks
4.01	DOTD STP Highway Plan Reading Vol 2	
4.02	DOTD STP Math Construction Part 2	
4.03	DOTD STM Tort Liability for Maintenance WBT	
4.04	DOTD BP Tort Liability: Depositions and Employee as a Witness WBT	
4.05	DOTD STW Traffic Control Through Maintenance Work Area	
5.	Engineering Technician 3	Due Date: 52 weeks
5.01	DOTD ATSSA Traffic Control Technician (TCT) Louisiana Specific - Expires 4 years	

DOTD Curriculum STW Flagging Refresher

DOTD STW Basic Flagging Refresher WBT - Expires 4 years

ATSSA TCT and TCS:

At ET 3: DOTD ATSSA Traffic Control Technician (TCT) Louisiana Specific - Expires 4 years

At ET 5: DOTD ATSSA Traffic Control Supervisor (TCS) Louisiana Specific - Expires 4 years

Will be in appropriate curriculum.



District Area Engineer Assistant (DIAEAS)

Manually assign.

DOTD Program - District Area Engineer Assistant Due Date: 5 years

1.	Safety Training	Due Date: 13 weeks
1.01	DOTD LP Electrocution Prevention WBT	
1.02	DOTD LP Heat Stress WBT	
1.03	DOTD LP Poisonous Plant Safety WBT	
1.04	DOTD LP Safe Driving WBT	
1.05	DOTD STW Work Zone TTC Safety WBT	
1.06	DOTD STW Basic Flagging Procedures	
1.07	DOTD STM Handling Hazardous Chemicals WBT	
2.	Fundamental Training	Due Date: 39 weeks
2.01	DOTD STP Standard Specifications	
2.02	DOTD STP Math Construction Part 1	
3.	Engineering Technician 1	Due Date: 52 weeks
3.01	DOTD STP English Grammar	
3.02	DOTD STP Highway Plan Reading Vol 1	
4.	Engineering Technician 2	Due Date: 52 weeks
4.01	DOTD STP Highway Plan Reading Vol 2	
4.02	DOTD STP Math Construction Part 2	
5.	Additional Training	Due Date: 104 weeks
5.01	DOTD STM Maintenance Activity Guide and Manual Study Guide	
5.02	DOTD STM Tort Liability for Maintenance WBT	
5.03	DOTD BP Tort Liability: Depositions and Employee as a Witness WBT	
5.04	DOTD STC Surveying Introduction WBT	
5.05	DOTD STM Basic Maintenance Leveling	
5.06	DOTD LD Professional Writing	
5.07	DOTD LD Conflict Management	

Other training may be individually assigned as desired.



District Construction Inspection, Lab and Training – General Information

District Construction Inspectors are located in the Districts in Units 2xx. The last digit of the Unit number indicates the district, while the center digit is a sequential number within each district. District digits are 0 (62), 1 (58), 2, 3, 4, 5, 6 (61), 7, 8. These Units also have an office Engineering Technician who will have slightly different training requirements. The inspectors must complete Specialty Areas and Certifications depending on their job title. The office person must complete Specialty Areas but is not required to obtain Certifications.

District Laboratory employees are located in the District Labs in Units 15x where the last digit indicates the district as it does with Construction Inspectors. These Units also have an office Engineering Technician who will have slightly different training requirements. Lab personnel must complete Specialty Areas and at a certain level obtain a District Lab Authorization.

District Training offices are located in every district and are predominately in Unit 001. They are responsible for delivering all specialty training to personnel in their district ranging from Maintenance employees to Construction and Laboratory employees who require Specialty Areas and Certifications. District Trainers are required to have Specialty Areas and Certifications themselves in order to be approved to train and test other employees in these areas.

Specialty Area and/or Certification requirements

All Engineering Technicians in the groups above have training that is required to be current in their current job title, and training that must be complete before advancing through reallocation or promotion to a higher job title.

The Specialty Area Program(s) to complete are determined by the supervisor. Employees may work on the training requirements for a Specialty Area without actually being subscribed to it, but ultimately should be subscribed to it before taking the Specialty Area exam. Exams are administered by the District Trainers. Results are entered by LTRC.

After completion of a Specialty Area, the employee should obtain 6 months of field experience before doing a Performance Evaluation administered by a District Trainer who has the Certification. Successful completion of the Performance Evaluation will result in a Certification being issued by LTRC.

Certifications are good for 5 years. The number of required Certifications must be maintained for the job level the person is in.



District Construction Inspectors

Employees are assigned to this program if they are an Engineering Technician in organizational units encompassing the Districts and Units 2xx and are not designated as an “office” technician.

DOTD Program ET-STP District Construction Inspection

1.	Safety Training	Due Date: 13 weeks
1.01	DOTD LP Electrocutation Prevention WBT	
1.02	DOTD LP Heat Stress WBT	
1.03	DOTD LP Poisonous Plant Safety WBT	
1.04	DOTD LP Safe Driving WBT	
1.05	DOTD STW Work Zone TTC Safety WBT	
2.	Fundamental Training	Due Date: 39 weeks
2.01	DOTD STP Math Construction Part 1	
2.02	DOTD STP Standard Specifications	
2.03	DOTD STW Basic Flagging Procedures	
2.04	DOTD STC Surveying Introduction WBT	
2.05	DOTD STC PCC Sampling and Testing	
2.06	DOTD STC PCC Sampling Plastic Concrete WBT	
2.07	DOTD STC PCC Sampling and Testing Performance Evaluation	
2.08	DOTD STC Sampling Soils Aggregates and Mixtures Exam	
2.09	DOTD STC Sampling Soils Aggregates and Mixtures WBT	
2.10	DOTD STC Sampling Soils Aggregates and Mixtures Performance Evaluation	
3.	Engineering Technician 1	Due Date: 52 weeks
3.01	DOTD STP Highway Plan Reading Vol 1	
3.02	DOTD STC Basic Pipe Installation	
4.	Engineering Technician 2	Due Date: 52 weeks
4.01	DOTD STP Math Construction Part 2	
4.02	DOTD STP Highway Plan Reading Vol 2	
4.03	DOTD STC Construction Leveling	
4.04	DOTD ATSSA Traffic Control Technician – expires 4 years	
5.	To Advance above Engineering Technician 2	
5.01	<p>To advance from one title to the next: Training status must be in Compliance, all STP training up to and including the current title must be complete, and anything additional below must be complete.</p> <p>To advance to an Engineering Technician 3 - 1 Full Certification To advance to an Engineering Technician 4 - 2 Full Certifications To advance to an Engineering Technician 5 - 2 Full Certifications and 1 Additional Specialty Area At Engineering Technician 5 - DOTD ATSSA Traffic Control Supervisor To advance to an Engineering Technician 7 - 3 Full Certifications and 1 Additional Specialty Area</p> <p>Click Mark Complete to complete this section.</p>	

DOTD Curriculum STW Flagging Refresher and appropriate ATSSA TCT or TCS Curriculum.



District Laboratory

Employees are assigned to this program if they are an Engineering Technician in organizational units encompassing the Districts and Units 15x and are not designated as an “office” technician.

DOTD Program ET-STP District Lab

1.	Safety Training	Due Date: 13 weeks
1.01	DOTD LP Electrocutation Prevention WBT	
1.02	DOTD LP Heat Stress WBT	
1.03	DOTD LP Poisonous Plant Safety WBT	
1.04	DOTD LP Safe Driving WBT	
1.05	DOTD STW Work Zone TTC Safety WBT	
2.	Fundamental Training	Due Date: 39 weeks
2.01	DOTD STP Standard Specifications	
2.02	DOTD STP Math Construction Part 1	
2.03	DOTD STW Basic Flagging Procedures	
2.04	DOTD STC Sampling Soils Aggregates and Mixtures Exam	
2.05	DOTD STC Sampling Soils Aggregates and Mixtures WBT	
2.06	DOTD STC Sampling Soils Aggregates and Mixtures Performance Evaluation	
2.07	DOTD-AUTH Aggregate Tester	
3.	Engineering Technician 1	Due Date: 52 weeks
3.01	DOTD STP Highway Plan Reading Vol 1	
3.02	DOTD STL PE - Engr Tech 1 : 8 Perf Evals	
4.	Engineering Technician 2	Due Date: 52 weeks
4.01	DOTD STP Math Construction Part 2	
4.02	DOTD STC PCC Sampling Plastic Concrete WBT	
4.03	DOTD STC PCC Sampling and Testing	
4.04	DOTD STC PCC Sampling and Testing Performance Evaluation	
4.05	DOTD STL PE - Engr Tech 2 : 8 Perf Evals	
5.	To advance above Engineering Technician 2	
	Requirements to Advance To advance from one title to the next: Training status must be in Compliance, all STP training up to and including the current title must be complete, and anything additional below must be complete.	
5.01	To advance to an Engineering Technician 3 - 1 Specialty Area At Engineering Technician 3 - DOTD STL PE - Engr Tech 3 : 8 Perf. Evals To advance to an Engineering Technician 4 - 2 Specialty Area At Engineering Technician 4 - DOTD STL PE - Engr Tech 4 : 8 Perf. Evals To advance to an Engineering Technician 5 - 2 Specialty Area and pass District Operations Exam At Engineering Technician 5 - DOTD ATSSA Traffic Control Supervisor To advance to an Engineering Technician 7 - 3 Specialty Areas	

DOTD Curriculum STW Flagging Refresher and appropriate ATSSA TCT or TCS Curriculum.

Requirements for the Asphalt SuperTech

At EngrTech 3 - complete Specialty Area for ACM Plant Technician and the Authorization.

At EngrTech 4 - complete Specialty Area for ACM Plant Inspection and the Certification.

At EngrTech 5 - complete Specialty Area for ACM Paving and the Certification.



DOTD STL PE – Engr Tech # : Perf Evals

= 1, 2, 3, 4 for ET1, ET2, ET3, ET4

PERFORMANCE EVALS FOR LABORATORY				Test	Name of Test - Performance Evaluation
Employee P # _____				1	AASHTO T 19 - Unit Weight of Agg
Name _____				2	AASHTO T 84 - Soec Grav Fine Agg
Dist _____ Unit _____				3	AASHTO T 85 - Spec Grav Coarse Agg
Supervisor _____				4	AASHTO TP 48 - Rotational Visco Bk
INSTRUCTIONS 8 tests from the list at right are required at each Engineering Technician 1-4 job level. Enter Test# , Date Complete, Test approver. When a set of 8 tests are complete, notify Training Office to enter the LMS record.				5	AASHTO TP 48 - Rotational Viscosity
				6	AASHTO T 248 - Flat and Elongated Particles
Job	Test	Date Complete	APPV	7	DOTD TR 106 - Total Free Moisture in Agg
Tech 1				8	DOTD TR 108 - Split-Qtr Samples
				9	DOTD TR 113 - Gradation Sand for Base Crs
				10	DOTD TR 113 - Gradation Sand/Clay/Gravel
				11	DOTD TR 113 - Gradation Stone for Bedding
				12	DOTD TR 119 - Deleterious Mat in Agg
				13	DOTD TR 120 - Soils Sand Equiv
				14	DOTD TR 120 - Soils Sand Web Video
				15	DOTD TR 121 - Fine Aggregate Angularity
Tech 2				16	DOTD TR 202 - Air Content of Concrete
				17	DOTD TR 207 - Slump of Concrete
				18	DOTD TR 226 - Making, Curing, Transporting Conc Cyl
				19	DOTD TR 230 - Capping and Breaking Conc Cyl
				20	DOTD TR 304 - Det Spec Grav and Dens Char of Comp Asph Mix
				21	DOTD TR 306 - Det of % Crushed Particles for Coarse Agg
				22	DOTD TR 309 - Mechanical Analysis of Extracted Agg
				23	DOTD TR 319 - Moist Cont of HMA
Tech 3				24	DOTD TR 322 - Eff Moist HMA
				25	DOTD TR 322 - Eff Moist HMA Book
				26	DOTD TR 322 - Eff Moist HMA Video
				27	DOTD TR 323 - Asp Content by Ignition
				28	DOTD TR 327 - Theo Max Spec Gravity of Asph Conc Mixtures
				29	DOTD TR 331 - Asphalt Volumetric Calculations
				30	DOTD TR 332 - Hamburg Wheel-Track Test
				31	DOTD TR 401 - Det of In Place Density
Tech 4				32	DOTD TR 403B - Moisture Content Oven Dry
				33	DOTD TR 407 - Mechanical Analysis Soils
				34	DOTD TR 411 - Dry Preparation of Soil / Soil Agg
				35	DOTD TR 413 - Percent Organic-Soils
				36	DOTD TR 418A - Moist-Density Relationship
				37	DOTD TR 418F - Stab Soil / Soil Agg MD
				38	DOTD TR 423 - Class of Soil / Soil Agg
				39	DOTD TR 428 - Atterberg Limits
				40	DOTD TR 429 - Resistivity of Soils / Water
				41	DOTD TR 430 - PH Value of Soil / Water
				42	DOTD TR 602 - Thick-Width of Base
				43	DOTD TR 645 - DCP Operation
				44	DOTD TR 645 - DCP Operation Video
				45	DOTD - Dynamic Shear Rheometer
				46	DOTD - Soils Explore - Shallow Borings
				47	DOTD - S101 - Sampling Aggregates



District Office Technicians - Construction Inspection and Lab

Employees are assigned to this program by contacting the DOTD SuccessFactors Administrator.

DOTD Program ET-STP District Construction-Lab Office

1.	Safety Training	Due Date: 13 weeks
1.01	DOTD LP Electrocution Prevention WBT	
1.02	DOTD LP Heat Stress WBT	
1.03	DOTD LP Poisonous Plant Safety WBT	
1.04	DOTD LP Safe Driving WBT	
1.05	DOTD STW Work Zone TTC Safety WBT	
2.	Fundamental Training	Due Date: 39 weeks
2.01	DOTD STP Standard Specifications	
2.02	DOTD STP Math Construction Part 1	
3.	Engineering Technician 1	Due Date: 52 weeks
3.03	DOTD STP English Grammar	
3.04	DOTD STP Highway Plan Reading Vol 1	
4.	Engineering Technician 2	Due Date: 52 weeks
4.01	DOTD STP Highway Plan Reading Vol 2	
4.02	DOTD STP Math Construction Part 2	
5.	To Advance above Engineering Technician 2	
5.01	Requirements to Advance To advance from one title to the next: Training status must be in Compliance, all STP training up to and including the current title must be complete, and anything additional below must be complete. To advance above Engineering Technician 2 - 1 Specialty Area To advance above Engineering Technician 3 - 2 Specialty Areas To advance above Engineering Technician 4 - 3 Specialty Areas	



District Training Technicians

Employees are assigned to this program by contacting the DOTD SuccessFactors Administrator.

DOTD Program ET-STP District Training

1.	Safety Training	Due Date: 13 weeks
1.01	DOTD LP Electrocutation Prevention WBT	
1.02	DOTD LP Heat Stress WBT	
1.03	DOTD LP Poisonous Plant Safety WBT	
1.04	DOTD LP Safe Driving WBT	
1.05	DOTD STW Work Zone TTC Safety WBT	
2.	Fundamental Training	Due Date : 39 weeks
2.01	DOTD STP Standard Specifications	
2.02	DOTD STP Math Construction Part 1	
2.03	DOTD STW Basic Flagging Procedures	
2.04	DOTD STC Surveying Introduction WBT	
2.05	DOTD STC PCC Sampling and Testing	
2.06	DOTD STC PCC Sampling Plastic Concrete WBT	
2.07	DOTD STC PCC Sampling and Testing Performance Evaluation	
2.08	DOTD STC Sampling Soils Aggregates and Mixtures Exam	
2.09	DOTD STC Sampling Soils Aggregates and Mixtures WBT	
2.10	DOTD STC Sampling Soils Aggregates and Mixtures Performance Evaluation	
3.	Engineering Technician 1	Due Date: 52 weeks
3.01	DOTD STP Highway Plan Reading Vol 1	
3.02	DOTD STP English Grammar	
3.03	DOTD STC Basic Pipe Installation	
4.	Engineering Technician 2	Due Date: 52 weeks
4.01	DOTD STP Math Construction Part 2	
4.02	DOTD STP Highway Plan Reading Vol 2	
4.03	DOTD STC Construction Leveling	
4.04	DOTD ATSSA Traffic Control Technician (TCT) Louisiana Specific - Expires 4 years	
4.05	DOTD STC Profiler Operation WBT	
5.	To advance above Engineering Technician 2	
5.01	<p>Requirements to advance To advance from one title to the next: Training Status must be In Compliance, all STP training up to and including the current title must be complete, and anything additional below must be complete.</p> <p>To advance to an Engineering Technician 3 - 1 Full Certification To advance to an Engineering Technician 4 - 2 Full Certifications At an Engineering Technician 4 - Receive approval for DOTD STX Trainer Certification Committee Approval To advance to an Engineering Technician 5 – 2 Full Certifications and 1 Additional Specialty Area At an Engineering Technician 5 - DOTD ATSSA Traffic Control Supervisor To advance to an Engineering Technician 7 - 3 Full Certifications and 1 Additional Specialty Area</p>	



District Construction Inspection, Lab and Training - Specialty Areas

Programs for Specialty Areas are assigned to each person individually.

All programs are set as due in 260 weeks from assignment.

All Specialty Areas have two sections; Section 1 consists of course work, Section 2 is an Exam.

Employees who completed Specialty Area Programs prior to conversion to the current LMS and those who complete them afterwards will be given a “course item history record” as follows:

[DOTD-AREA Embankment and Base Course](#)

[DOTD-AREA ACM Paving](#)

[DOTD-AREA ACM Plant Technician](#)

[DOTD-AREA ACM Plant Inspection](#)

[DOTD-AREA PCC Paving](#)

[DOTD-AREA PCC Plant](#)

[DOTD-AREA Structural Concrete](#)

DOTD Construction Specialty Area Program - Embankment and Base Course

1.	Required Courses
1.01	DOTD STC Embankment and Excavation Inspection
1.02	DOTD STC Base Course Inspection
1.03	DOTD STC Basic Pipe Installation
1.04	DOTD STC Density Testing for Embankment and Base Course WBT
1.05	DOTD STC Density Testing for Embankment and Base Course
1.06	DOTD STC QA Manual for Embankment and Base Course
2.	Specialty Area Exam
2.01	DOTD STX Embankment and Base Course Inspection Specialty Area Exam

Credit is given for [DOTD-AREA Embankment and Base Course](#) on completion of program.

DOTD Construction Specialty Area Program - ACM Paving

1.	Required Courses
1.01	DOTD STC ACM Paving Inspection Vol 1
1.02	DOTD STC ACM Paving Inspection Vol 2
1.03	DOTD STC QA Manual for Asphalt Concrete Mixtures
1.04	DOTD STC Profiler Operation WBT
1.05	DOTD-AUTH Profiler Inspector Authorization
2.	Specialty Area Exam
2.01	DOTD STX ACM Paving Inspection Specialty Area Exam

Credit is given for [DOTD-AREA ACM Paving](#) on completion of program.



DOTD Construction Specialty Area Program - ACM Plant Technician

1.	Required Courses
1.01	DOTD-AUTH Aggregate Tester
1.02	DOTD STC ACM Plant Inspection
1.03	DOTD STC QA Manual for Asphalt Concrete Mixtures
1.04	DOTD STP Math Construction Part 2
1.05	DOTD STC ACM Testing and Analysis 1 WBT
1.06	DOTD STC ACM Testing and Analysis 2 WBT
1.07	DOTD STC ACM Testing and Analysis 1 Exam
1.08	DOTD STC ACM Testing and Analysis 1 Performance Evaluations
2.	Specialty Area Exam
2.01	DOTD STX ACM Plant Technician Specialty Area Exam

Credit is given for [DOTD-AREA ACM Plant Technician](#) on completion of program.

DOTD Construction Specialty Area Program - ACM Plant

1.	Required Courses
1.01	DOTD-AUTH Aggregate Tester
1.02	DOTD-AUTH ACM Plant Technician
1.03	DOTD STC ACM Superpave Mix Design Class
2.	Specialty Area Exam
2.01	DOTD STX ACM Plant Inspection Specialty Area Exam

Credit is given for [DOTD-AREA ACM Plant Inspection](#) on completion of program.

DOTD Construction Specialty Area Program - PCC Paving

1.	Required Courses
1.01	DOTD STC PCC Paving Introduction WBT
1.02	DOTD STC PCC Paving Inspection
1.03	DOTD STC PCC Plant Inspection
1.04	DOTD STC PCC Sampling Plastic Concrete WBT
1.05	DOTD STC PCC Sampling and Testing
1.06	DOTD STC QA Manual for PCC Paving and Structures
1.07	DOTD-AUTH Profiler Inspector
2.	Specialty Area Exam
2.01	DOTD STX PCC Paving Inspection Specialty Area Exam

Credit is given for [DOTD-AREA PCC Paving](#) on completion of program.



DOTD Construction Specialty Area Program - PCC Plant

1.	Required Courses
1.01	DOTD-AUTH PCC Field Tester
1.02	DOTD-AUTH Aggregate Tester
1.03	DOTD STC PCC Plant Inspection
1.04	DOTD STC PCC Sampling Plastic Concrete WBT
1.05	DOTD STC PCC Sampling and Testing
1.06	DOTD STC QA Manual for PCC Paving and Structures
2.	Specialty Area Exam
2.01	DOTD STX PCC Plant Inspection Specialty Area Exam

Credit is given for [DOTD-AREA PCC Plant Inspection](#) on completion of program.

DOTD Construction Specialty Area Program - Structural Concrete

1.	Required Courses
1.01	DOTD STC Structural Concrete Inspection Vol 1
1.02	DOTD STC Structural Concrete Inspection Vol 2
1.03	DOTD STC PCC Plant Inspection
1.04	DOTD STC PCC Sampling Plastic Concrete WBT
1.05	DOTD STC PCC Sampling and Testing
1.06	DOTD STC QA Manual for PCC Paving and Structures
1.07	DOTD STC Pile Driving Inspection
2.	Specialty Area Exam
2.01	DOTD STX Structural Concrete Inspection Specialty Area Exam

Credit is given for [DOTD-AREA Structural Concrete](#) on completion of program.

District Construction Inspection, Lab and Training – Miscellaneous

DOTD Construction Program - Soil and Aggregate Stockpile Sampling

Needed for Embankment Cert and any PCC Cert. Can be assigned as needed.

1.	Course Requirements
1.01	DOTD STC Sampling Soils Aggregates and Mixtures Exam
2.	Performance Evaluation
2.01	DOTD STX Sampling Soils Aggregates and Mixtures Performance Evaluation

DOTD Curriculum BP Ethics for Construction

Curriculum is assigned to ALL personnel in Districts, Units 15x and 2xx.

DOTD BP Ethics for Construction Personnel WBT – Expires 3 years



District Construction Inspection, Lab and Training - Authorizations

Authorizations do not expire.

DOTD Construction Authorization Program – Aggregate Tester

Due Date: 200 weeks

1.	Course Requirements
1.01	DOTD STP Math Construction Part 1
1.02	DOTD STC Sampling Soils Aggregates and Mixtures Exam
1.03	DOTD STC TC3 Aggregate Basics WBT
1.04	DOTD STC TC3 Reducing Aggregate Samples WBT
1.05	DOTD STP Standard Specifications
2.	Authorization Exam Due Date: 100 weeks
2.01	DOTD STX Aggregate Tester Authorization Exam
3.	Performance Evaluation Due Date: 100 weeks
3.01	DOTD STX Aggregate Tester Authorization Performance Evaluation

Credit is given for [DOTD-AUTH Aggregate Tester](#) on completion of program.

DOTD Construction Authorization Program - Nuclear Device Operator

Due Date: 200 weeks

(Needed for Embankment/Base Certification)

1.	Course Requirements
1.01	DOTD NU Radiation Safety Introduction WBT
1.02	DOTD NU Radiation Safety
1.03	DOTD STC Density Testing for Embankment and Base Course
2.	Performance Evaluation
2.01	DOTD STX Nuclear Device Authorization Performance Evaluation

Credit is given for [DOTD-AUTH Nuclear Density](#) on completion of program.

DOTD Construction Authorization Program - ACM Plant Technician

Due Date: 200 weeks

1.	Course Requirements
1.01	DOTD-AUTH Aggregate Tester
1.02	DOTD STC ACM Plant Inspection
1.03	DOTD STC QA Manual for Asphalt Concrete Mixtures
1.04	DOTD STP Math Construction Part 2
1.05	DOTD STC ACM Testing and Analysis 1 WBT
1.06	DOTD STC ACM Testing and Analysis 2 WBT
1.07	DOTD STC ACM Testing and Analysis 1 Exam
1.08	DOTD STC ACM Testing and Analysis 1 Performance Evaluations
2.	Specialty Area Exam Due Date: 100 weeks
2.01	DOTD STX ACM Plant Technician Specialty Area Exam
3.	Performance Evaluation Due Date: 100 weeks
3.01	DOTD STX ACM Plant Technician Authorization Performance Evaluation

Credit is given for [DOTD-AUTH ACM Plant Technician](#) on completion of program.



DOTD Construction Authorization Program - PCC Field Tester

Due Date: 200 weeks

1.	Required Courses
1.01	DOTD STC PCC Sampling and Testing
1.02	DOTD STC PCC Sampling Plastic Concrete WBT
2.	Performance Evaluation
2.01	DOTD STX PCC Sampling and Testing Authorization Performance Evaluation

Credit is given for [DOTD-AUTH PCC Field Tester](#) on completion of program.

DOTD Construction Authorization Program – District Lab Operations

Due Date: 200 weeks

1.	Required Performance Evaluations
1.01	DOTD STL PE - Engr Tech 1 : 8 Perf Evals
1.02	DOTD STL PE - Engr Tech 2 : 8 Perf Evals
1.03	DOTD STL PE - Engr Tech 3 : 8 Perf Evals
1.04	DOTD STL PE - Engr Tech 4 : 8 Perf Evals
2.	Written Exam
2.01	DOTD STX District Laboratory Operations Authorization Exam

Credit is given for [DOTD-AUTH District Lab Operations](#) on completion of program.



District Construction Inspection and Training - Certifications

Certifications are good for 5 years and can be renewed.

At a minimum, employees must maintain the required number of certifications their job title requires.

A Certification can be obtained by completing three steps:

- 1) Complete the Specialty Area Program
- 2) Obtain field experience
- 3) Pass a Performance Evaluation.

Employees who complete Certifications will be given a “course item history record” as follows:

DOTD-CERT Embankment and Base Course - expires 5 years

DOTD-CERT ACM Paving - expires 5 years

DOTD-CERT ACM Plant - expires 5 years

DOTD-CERT PCC Paving - expires 5 years

DOTD-CERT PCC Plant - expires 5 years

DOTD-CERT Structural Concrete - expires 5 years

Certification Curriculums

After obtaining a Certification, the employee is placed in the Certification Curriculum that will require the certification to be renewed every 5 years.

DOTD-CERT Curriculum - Embankment and Base Course

DOTD-CERT Embankment and Base Course - expires 5 years
--

DOTD-CERT Curriculum - ACM Paving

DOTD-CERT ACM Paving - expires 5 years
--

DOTD-CERT Curriculum - ACM Plant

DOTD-CERT ACM Plant - expires 5 years

DOTD-CERT Curriculum - PCC Paving

DOTD-CERT PCC Paving - expires 5 years
--

DOTD-CERT Curriculum - PCC Plant

DOTD-CERT PCC Plant - expires 5 years

DOTD-CERT Curriculum - Structural Concrete

DOTD-CERT Structural Concrete - expires 5 years

Renewing a Certification

To renew a Certification, the employee must take and pass its Recertification Exam. After successful completion of the exam, the Certification is reissued for another 5 year period.

If the employee will no longer maintain the certification, the District Trainer will need to remove the curriculum from the employee.



Structured Training for Maintenance Jobs

Introduction to Maintenance Jobs

PPM 59 Appendix C covers Maintenance Jobs. All are in the WS pay grades unless noted below.

All jobs must complete and maintain the **State and Agency Mandated Training**. Because of the work environment for these jobs, safety training is extremely important. Initial safety training is required within the first 90 days and some safety training must be repeated on a regular basis. Safety Training has been standardized as much as possible as has some of the supervisor training.

It is possible for a job title to be used in multiple types of work settings, where the training needs may differ. The Highway Foreman 2 in particular serves as a supervisor in multiple work settings. In addition to the job title's training requirements, this job will also require the training needed by their subordinates.

The **Equipment Operator Certification Program (EOCP)** was established to ensure safe operating of equipment through the training of employees and the requirement to operate equipment as a trainee until the employee has sufficient experience to operate the equipment without supervision by a certified operator.

An introduction to the Equipment Operator Certification Program (EOCP) with information about record keeping in the LMS and the assignment of employees to complete training can be found in the main part of this document. It is important that employees who operate equipment receive the appropriate training and that certified operators are recertified every 4 years on the equipment they operate. Training is conducted by approved instructors with experience operating the equipment.

Road and Bridge Maintenance Crews

Parish Maintenance crews are located in all districts in Units 5xx except 500.

These crews do not have Mobile Equipment Operator Heavy 2s or Highway Foreman 2s.
Supervisors consist of Highway Foremen 1s and Parish Highway Maintenance Superintendent.

Districtwide Maintenance crews are located in the districts in units 500 and 7xx.

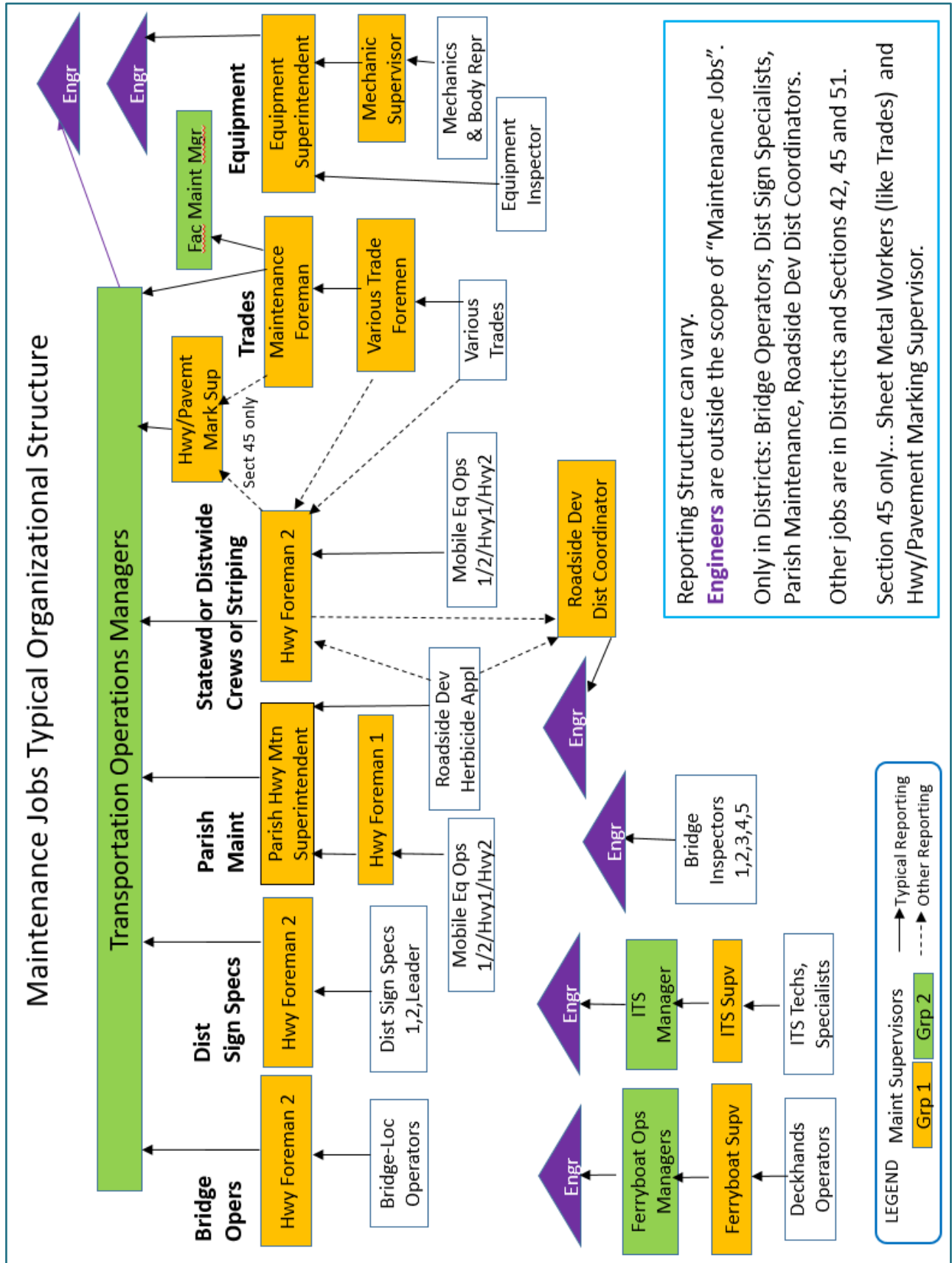
Crews in units 77x are striping crews with slightly different training requirements.
The supervisor is typically a Highway Foreman 2.

Statewide Maintenance crews are located in Section 42-006, Section 45, and Section 51-7xx.

The supervisor is typically a Highway Foreman 2.

Exceptions to Job Categories and Training

- Admin Coordinators in Maintenance Units are covered in the regular Admin Coordinator chapter.
- Jobs not in the WS series but are included in the Maintenance Group...Bridge Inspectors
- Maintenance Jobs without Structured Training
 - Aircraft Pilots, Custodians, Operating Engineers, Printing Operators
 - Facility Maintenance Assistant Manager, Manager A, Manager B





Mobile Equipment Operators

Equipment Operator requirements are assigned on an individual basis. See EOCP Section.

Job Code	Job Title	S U P	Program	Curric Mobile Eq Opers	Program Traffic Cntl
103460	MOB EQUIP OPER 1		By Location	X	
103440	MOB EQUIP OPER 2		By Location	X	
102860	MOB EQUIP OPER HEAVY 1		By Location	X	X
102860	MOB EQUIP OPER HEAVY 2		By Location	X	X

All Mobile Equipment Operators

DOTD Curriculum - Mobile Equipment Operator

DOTD LP Hazardous Materials Annual Refresher - Expires 1 year
DOTD LP Confined Spaces WBT - Expires 3 years
DOTD STW Basic Flagging Refresher WBT - Expires 4 years

All Mobile Equipment Operators Heavy 1 and Heavy 2

DOTD Program - Maintenance Traffic Control

Due Date: 2 years

1.	Traffic Control
1.01	DOTD STW Traffic Control Through Maintenance Work Area

—— LOCATION DEPENDENT ——

MOEQOP All Mobile Equipment Operators EXCEPT STRIPING CREWS and Section 51

DOTD Program - Mobile Equipment Operators - Standard

1.	Safety Training	Due Date: 13 weeks
1.01	DOTD LP Electrocution Prevention WBT	
1.02	DOTD LP Heat Stress WBT	
1.03	DOTD LP Poisonous Plant Safety WBT	
1.04	DOTD LP Safe Driving WBT	
1.05	DOTD STW Work Zone TTC Safety WBT	
1.06	DOTD STW The ABCs of Work Zone Personnel Safety WBT	
1.07	DOTD STW Basic Flagging Procedures	
1.08	DOTD LP Power/Hand Tool Safety WBT	
1.09	DOTD STEq Lowboy Transporting Construction Equipment WBT	



DISTRP All Mobile Equipment Operators in STRIPING CREWS – Districts, Units 77x & Section 45

DOTD Program – Mobile Equipment Operators - Striping

1.	Safety Training	Due Date: 13 weeks
1.01	DOTD LP Electrocution Prevention WBT	
1.02	DOTD LP Heat Stress WBT	
1.03	DOTD LP Poisonous Plant Safety WBT	
1.04	DOTD LP Safe Driving WBT	
1.05	DOTD STW Work Zone TTC Safety WBT	
1.06	DOTD STW The ABCs of Work Zone Personnel Safety WBT	
1.07	DOTD STW Basic Flagging Procedures	
1.08	DOTD LP Power/Hand Tool Safety WBT	
1.09	DOTD STM Handling Hazardous Chemicals WBT	

MEOS51 All Mobile Equipment Operators in Section 51

DOTD Program – Mobile Equipment Operators – Section 51

1.	Safety Training	Due Date: 13 weeks
1.01	DOTD LP Electrocution Prevention WBT	
1.02	DOTD LP Heat Stress WBT	
1.03	DOTD LP Poisonous Plant Safety WBT	
1.04	DOTD LP Safe Driving WBT	
1.05	DOTD STW Work Zone TTC Safety WBT	
1.06	DOTD STW The ABCs of Work Zone Personnel Safety WBT	
1.07	DOTD STW Basic Flagging Procedures	
1.08	DOTD LP Power/Hand Tool Safety WBT	
1.09	DOTD STM Handling Hazardous Chemicals WBT	

DOTD PC Computer Program – Technicians

*is required of Section 51 MEO Heavy 1 and 2 and Highway Foreman 2.
See main section of Catalog.*



Highway Foreman 1 and Parish Highway Maintenance Superintendent

Parish Maintenance Units - Jobs are located in Districts, in Units 5xx except 500.

Equipment Operator requirements are assigned on an individual basis. See EOCP Section.

Job Code	Job Title	S U P	Program Foreman 1 /Par Sup	Curric MOEQOP
128940	HIGHWAY FOREMAN 1	1	X	X
134120	PARISH HWY MAIN SUPT	1	X	X

Assigned to same training as crews which include Mobile Equipment Operators 1, 2 and 1/Heavy.

DOTD Curriculum - Mobile Equipment Operator

DOTD LP Hazardous Materials Annual Refresher - Expires 1 year
DOTD LP Confined Spaces WBT - Expires 3 years
DOTD STW Basic Flagging Refresher WBT - Expires 4 years

DOTD Program - Maintenance Highway Foreman 1 and Parish Superintendent

1.	Safety Training	Due Date: 13 weeks
1.01	DOTD LP Electrocution Prevention WBT	
1.02	DOTD LP Heat Stress WBT	
1.03	DOTD LP Poisonous Plant Safety WBT	
1.04	DOTD LP Safe Driving WBT	
1.05	DOTD STW Work Zone TTC Safety WBT	
1.06	DOTD STW The ABCs of Work Zone Personnel Safety WBT	
1.07	DOTD STW Basic Flagging Procedures	
1.08	DOTD LP Power/Hand Tool Safety WBT	
1.09	DOTD STEq Lowboy Transporting Construction Equipment WBT	
1.10	DOTD STW Traffic Control Through Maintenance Work Area	
2.	Maintenance Highway Worker Supervisors	Due Date: 39 weeks
2.01	DOTD STM Tort Liability for Maintenance WBT	
2.02	DOTD BP Tort Liability: Depositions and Employee as a Witness WBT	
2.03	DOTD STM Handling Hazardous Chemicals WBT	
2.04	DOTD STP English Grammar	
2.05	DOTD STP Math Maintenance	
2.06	DOTD STM Maintenance Activity Guide and Manual Study Guide	
3.	Highway Repair Videos	Due Date: 52 weeks
3.01	DOTD STMR Asphalt Pavement Crack Repair WBT	
3.02	DOTD STMR Ditch Mechanical Clean Unlined WBT	
3.03	DOTD STMR Single/Multi Surface Treatment WBT	
3.04	DOTD STMR Base and Sub-Base Repair WBT	
3.05	DOTD STMR Cleaning Lined Ditches-Culverts and Catch Basins WBT	

DOTD Training Requirements Catalog



3.06	DOTD STMR Pothole Repair - Asphalt Concrete Pavement WBT
3.07	DOTD STMR Pothole Repair - Asphalt Surface Treatment WBT
3.08	DOTD STMR Repair Depressions/Rutting/Corrugations WBT
3.09	DOTD STMR Shoulder Earth/Gravel Replenish WBT
3.10	DOTD STMR Shoulder Earth/Gravel Reshape WBT
3.11	DOTD STMR Unpaved Road Patching WBT
3.12	DOTD STMR Unpaved Road Regraveling WBT
3.13	DOTD STMR Unpaved Road Smooth/Reshape WBT

Additional STRM courses may be taken if needed.

DOTD STMR Cleaning/Clearing of Bridges WBT

DOTD STMR Concrete Bridge Deck Repair WBT

DOTD STMR Structural Repair: Concrete Cracks Injection-Epoxy

DOTD STMR Asphalt Surface Maintenance



Roadside Development

RDSDD First 3 jobs below are located in all districts. Reporting structure varies by district.

Equipment Operator requirements are assigned on an individual basis. See EOCP Section.

Herbicide Applicator should be qualified to operate Herbicide Spray System at a minimum.

Job Code	Job Title	Job Cat	S U P	Leadership Program	Program Roadside	Curriculum Herbicide
155460	ROADSIDE DEV HERB APP	WS			X	X
152580	ROADSIDE DEV DIST COOR TR	WS		P1	X	
108620	ROADSIDE DEV DIST COORD	WS	1	P2	X	
108610	ROADSIDE DEV MANAGER	WS	1	P3	Job in Section 51 only	

DOTD Program - Maintenance Roadside Development

Due Date: 104 weeks

1.	Safety Training	Due Date: 13 weeks
1.01	DOTD LP Electrocution Prevention WBT	
1.02	DOTD LP Heat Stress WBT	
1.03	DOTD LP Poisonous Plant Safety WBT	
1.04	DOTD LP Safe Driving WBT	
1.05	DOTD STW Work Zone TTC Safety WBT	
1.06	DOTD STW The ABCs of Work Zone Personnel Safety WBT	
1.07	DOTD STW Basic Flagging Procedures	
1.08	DOTD LP Power/Hand Tool Safety WBT	
1.09	DOTD STM Handling Hazardous Chemicals WBT	
2.	Required Courses	Due Date: 52 weeks
2.01	DOTD STP Math Maintenance	
3.	Traffic Control	
3.01	DOTD STW Traffic Control Through Maintenance Work Area	

DOTD Curriculum - Roadside Development Herbicide Applicator

DOTD LP Hazardous Materials Annual Refresher - Expires 1 year
DOTD LP Confined Spaces WBT - Expires 3 years
DOTD STW Basic Flagging Refresher WBT - Expires 4 years
DOTD-CRED Herbicide Applicator Card - Expires 2 years

Only applies to Herbicide Applicator job title.



District Sign Specialists

Equipment Operator requirements are assigned on an individual basis. See EOCP Section.

Job Code	Job Title	S U P	Program Job SIGNSP	Curriculum Dist Sign Specialist	Curriculum ATSSA TCT or TCS	Curriculum ATSSA Sign Tech
151980	DISTRICT SIGN SPEC 1		1	X		
151990	DISTRICT SIGN SPEC 2		2	X	TCT	Level 1
173370	DISTRICT SIGN SPEC LEADER		3	X	TCS	Level 2
128950	HIGHWAY FOREMAN 2	1	3	X	TCS	Level 2

Jobs are located in the Districts, Units 750 and 751.

DOTD Program - District Sign Specialist 1

1.	Safety Training	Due Date: 13 weeks
1.01	DOTD LP Electrocutation Prevention WBT	
1.02	DOTD LP Heat Stress WBT	
1.03	DOTD LP Poisonous Plant Safety WBT	
1.04	DOTD LP Safe Driving WBT	
1.05	DOTD LP Power/Hand Tool Safety WBT	
1.06	DOTD STW The ABCs of Work Zone Personnel Safety WBT	
1.07	DOTD STW Work Zone TTC Safety WBT	
1.08	DOTD STW Basic Flagging Procedures	
2.	District Sign Specialist 1	Due Date: 39 weeks
2.01	DOTD STM Small Traffic Sign Maintenance	

DOTD Program - District Sign Specialist 2

1.	Safety Training	Due Date: 13 weeks
1.01	DOTD LP Electrocutation Prevention WBT	
1.02	DOTD LP Heat Stress WBT	
1.03	DOTD LP Poisonous Plant Safety WBT	
1.04	DOTD LP Safe Driving WBT	
1.05	DOTD LP Power/Hand Tool Safety WBT	
1.06	DOTD STW The ABCs of Work Zone Personnel Safety WBT	
1.07	DOTD STW Work Zone TTC Safety WBT	
1.08	DOTD STW Basic Flagging Procedures	
2.	District Sign Specialist 1	Due Date: 39 weeks
2.01	DOTD STM Small Traffic Sign Maintenance	
3.	District Sign Specialist 2	Due Date: 52 weeks
3.01	DOTD STP Math Maintenance	
3.02	DOTD STM Tort Liability for Maintenance WBT	
3.03	DOTD BP Tort Liability: Depositions and Employee as a Witness WBT	
3.04	DOTD ATSSA Traffic Control Technician (TCT) Louisiana Specific - Expires 4 years	
3.05	DOTD ATSSA Traffic Sign Technician I (TST I) Louisiana Specific - Expires 4 years	



DOTD Program - District Sign Specialist Leader (Sign Hwy Foreman 2 also in this program)

1.	Safety Training	Due Date: 13 weeks
1.01	DOTD LP Electrocution Prevention WBT	
1.02	DOTD LP Heat Stress WBT	
1.03	DOTD LP Poisonous Plant Safety WBT	
1.04	DOTD LP Safe Driving WBT	
1.05	DOTD LP Power/Hand Tool Safety WBT	
1.06	DOTD STW The ABCs of Work Zone Personnel Safety WBT	
1.07	DOTD STW Work Zone TTC Safety WBT	
1.08	DOTD STW Basic Flagging Procedures	
2.	District Sign Specialist 1	Due Date: 39 weeks
2.01	DOTD STM Small Traffic Sign Maintenance	
3.	District Sign Specialist 2	Due Date: 52 weeks
3.01	DOTD STP Math Maintenance	
3.02	DOTD STM Tort Liability for Maintenance WBT	
3.03	DOTD BP Tort Liability: Depositions and Employee as a Witness WBT	
3.04	DOTD ATSSA Traffic Control Technician (TCT) Louisiana Specific - Expires 4 years	
3.05	DOTD ATSSA Traffic Sign Technician I (TST I) Louisiana Specific - Expires 4 years	
4.	District Sign Specialist Leader	Due Date: 52 weeks
4.01	DOTD ATSSA Traffic Sign Technician II (TST II) Louisiana Specific- Expires 4 years	
4.02	DOTD ATSSA Traffic Control Supervisor (TCS) Louisiana Specific	

DOTD Curriculum - District Sign Specialist

DOTD STW Basic Flagging Refresher WBT - Expires 4 years
DOTD LP Hazardous Materials Annual Refresher - Expires 1 year

ATSSA TCT or TCS? See chart above.

DOTD Curriculum ATSSA Traffic Control Technician

Has not completed TCS.

DOTD ATSSA Traffic Control Technician (TCT) Louisiana Specific- - Expires 4 years

OR

DOTD Curriculum ATSSA Traffic Control Supervisor Refresher

Has completed TCS.

DOTD ATSSA Traffic Control Supervisor Refresher (TCSR) Louisiana Specific - Expires 4 years

ATSSA Traffic Sign Technician level? See chart above.

DOTD Curriculum ATSSA Traffic Sign Technician 1

Completed TST I but not TST II

DOTD ATSSA Traffic Sign Technician I (TST I) Louisiana Specific - Expires 4 years

OR

DOTD Curriculum ATSSA Traffic Sign Technician 2

Completed TST II

DOTD ATSSA Traffic Sign Technician II (TST II) Louisiana Specific - Expires 4 years



Bridge Operators and Navigational Lock Operators

Bridge Operators are located in Districts in Units 9xx.

Org Units- Not Navigational Lock Operators.

Navigational Lock Operators are in District 02-Unit 912 only.

Org Units: 50021295, 50021310, 50021311, 50021312

Job Code	Job Title	S U P	Program Mtn Hwy Safety	Curriculum BRIDOP	Curriculum NAVLOC	Program Mtn Hwy Supers
Bridge Operators						
128760	BRIDGE-LOCK OPERATOR 1		X	X		
128680	BRIDGE-LOCK OPERATOR 2		X	X		
128950	HIGHWAY FOREMAN 2	1	X	X		X
Navigational Lock Operators (02-912)						
128760	BRIDGE-LOCK OPERATOR 1		X		X	
128680	BRIDGE-LOCK OPERATOR 2		X		X	
128950	HIGHWAY FOREMAN 2	1	X		X	X

DOTD Program - Maintenance Highway Worker Safety Due Date: 90 days

1.	Safety Training
1.01	DOTD LP Electrocution Prevention WBT
1.02	DOTD LP Heat Stress WBT
1.03	DOTD LP Poisonous Plant Safety WBT
1.04	DOTD LP Safe Driving WBT
1.05	DOTD STW Work Zone TTC Safety WBT
1.06	DOTD STW The ABCs of Work Zone Personnel Safety WBT
1.07	DOTD STW Basic Flagging Procedures
1.08	DOTD LP Power/Hand Tool Safety WBT

———— LOCATION DEPENDENT ————

DOTD Curriculum - Bridge Operators

DOTD STM Movable Bridges - Persons Duties - Expires 5 years
DOTD STW Basic Flagging Refresher WBT - Expires 4 years
DOTD LP Confined Spaces WBT - Expires 3 years
DOTD LP Lockout/Tagout WBT - Expires 1 year

DOTD Curriculum - Navigational Lock Operators

DOTD LP Confined Spaces WBT - Expires 3 years
DOTD LP Lockout/Tagout WBT - Expires 1 year
DOTD LP Power/Hand Tool Safety WBT
DOTD STM Electrical Maintenance Book 201: Basic Electricity



Highway Foreman 2

Highway Foreman 2 is a supervisor in diverse areas, so also see requirements by job location.

Equipment Operator requirements are assigned on an individual basis. See EOCP Section.

Job Code	Job Title	S U P	Program Hwy Foreman 2	Location Specific Curriculum	Location Specific Program
128950	HIGHWAY FOREMAN 2	1	X	X	X

DOTD Program – Highway Foreman 2

1.	Required Courses
1.01	DOTD STM Tort Liability for Maintenance WBT
1.02	DOTD BP Tort Liability: Depositions and Employee as a Witness WBT
1.03	DOTD STM Handling Hazardous Chemicals WBT
1.04	DOTD STP English Grammar
1.05	DOTD STP Math Maintenance
1.06	DOTD STM Maintenance Activity Guide and Manual Study Guide

JOB LOCATION SPECIFIC TRAINING (See Job Location for additional requirements.)

A. District Sign Specialists (SIGNSP)

Jobs occur in D02/G751, D02/G750, D03/G750, D04/G750, D05/G750, D07/G750, D08/G750, D58/G750, D61/G750, D62/G750. Same requirements as District Sign Specialist Leader.

B. Bridge-Lock Operator (BRIDOP or NAVLOC)

Jobs occur in D02/G9*, D03/G9*, D07/G9*, D61/G9*, D62/G9*.

Same requirements as Bridge-Lock Operator, Bridge Operator or Nav Lock Operator.

C. Striping Crews (DISTRP)

Jobs occur in Districts, Units 77x and Section 45.

Same requirements as Mobile Equipment Operator Heavy 2 in Striping.

D. Districtwide or Statewide Crews, not Striping (MOEQOP)

Job in any location not included above follow requirements of Mobile Equipment Operators.

Same requirements as Mobile Equipment Operator Heavy 2, not Striping.

E. Section 51 Crews

Same requirements as Mobile Equipment Operator Heavy 2 in Section 51.



Highway Sign/Pavement Marking Supervisor

Jobs are located in Section 45 only.

See training required of Transportation Operations Manager in Section 45.

DOTD Program - Transportation Ops Manager – Section 45

DOTD Curriculum – Section 45



Transportation Operations Manager

Jobs are located in two different areas in all Districts and in Sections 45 and 51.

Job Code	Job Title	S U P	Program Location Dependent	Curriculum Location Dependent
160680	TRANSPORTATION OPS MGR	2	X	X

LOCATION DEPENDENT

TOMDTU	District Traffic Units	All districts, units 002 - Based on Organizational Units
TOMDPM	District Parish Maintenance	All districts and not Traffic
TOMS45	Section 45	All in section 45
TOMS51	Section 51	All in section 51 – follow Bridge Inspector program

TOMDTU - District Traffic Units supervising T-TRAF

Org Units: Districts in Units 002 and 003

See District Traffic Engineering (T-TRAF).

DOTD Program ET-STP District Traffic Engineering

DOTD Curriculum STW Flagging Refresher

ATSSA TCT and TCS:

Will be in appropriate curriculum:

DOTD Curriculum ATSSA Traffic Control Technician

OR *DOTD Curriculum ATSSA Traffic Control Supervisor Refresher*

TOMDPM - Districts EXCEPT for those in District Traffic Units

Org Units: Not Section 45 and Not Section 51 and Not District Traffic

May be able to specify org units in districts where these occur .

DOTD Program - Transportation Ops Manager - District Parish Maintenance

1.	Safety Training	Due Date: 13 weeks
1.01	DOTD LP Electrocution Prevention WBT	
1.02	DOTD LP Heat Stress WBT	
1.03	DOTD LP Poisonous Plant Safety WBT	
1.04	DOTD LP Safe Driving WBT	

DOTD Training Requirements Catalog



1.05	DOTD STW Work Zone TTC Safety WBT
1.06	DOTD STW The ABCs of Work Zone Personnel Safety WBT
1.07	DOTD STW Basic Flagging Procedures
1.08	DOTD LP Power/Hand Tool Safety WBT
1.09	DOTD STM Handling Hazardous Chemicals WBT
1.10	DOTD LP Asbestos Awareness WBT
2.	District Parish Maintenance Courses Due Date: 39 weeks
2.01	DOTD STP Standard Specifications
2.02	DOTD STP Highway Plan Reading Vol 1
2.03	DOTD STP Highway Plan Reading Vol 2
2.04	DOTD STP English Grammar
2.05	DOTD STP Math Maintenance
2.06	DOTD STM Tort Liability for Maintenance WBT
2.07	DOTD STM Maintenance Activity Guide and Manual Study Guide
2.08	DOTD BP Tort Liability: Depositions and Employee as a Witness WBT
3.	Additional Parish Transportation Ops Courses Due Date: 104 weeks
3.01	DOTD STC Basic Pipe Installation
3.02	DOTD STC Surveying Introduction WBT
3.03	DOTD STC Base Course Inspection
3.04	DOTD STC Embankment and Excavation Inspection
3.05	DOTD STC ACM Paving Inspection Vol 1
3.06	DOTD STC ACM Paving Inspection Vol 2
3.07	DOTD STMR Asphalt Pavement Crack Repair
3.08	DOTD STM Basic Maintenance Leveling
3.09	DOTD STW Traffic Control Through Maintenance Work Area
3.10	DOTD ATSSA Traffic Control Technician (TCT) Louisiana Specific - Expires 4 years
3.11	DOTD ATSSA Traffic Control Supervisor (TCS) Louisiana Specific

DOTD Curriculum - Transportation Ops Manager - District Parish Maintenance

DOTD STW Basic Flagging Refresher WBT - Expires 4 years
DOTD LP Hazardous Materials Annual Refresher - Expires 1 year
DOTD LP Confined Spaces WBT - Expires 3 years
DOTD ATSSA Traffic Control Supervisor Refresher (TCSR) Louisiana Specific - Expires 4 years

TOMS45 - Section 45 – in various units

People in Section 45 in the title – were in programs 45/SGN, 45/SIG, 45/SIS, 45/SST

Section 45 org units: 50374045, 50399401, 50400085, 50400087, 50020486, 50496304, 50496305, 50399403, 50400118, 50400119, 50400120, 50673155, 50399455, 50399455, 50020493, 50020493, 50399456, 50020494, 50399457, 50399458, 50020490, 50400091, 50399459, 50399460, 50399461, 50399462, 50399463, 50399464, 50399465, 50399466



DOTD Program - Transportation Ops Manager – Section 45

1.	Safety Training	Due Date: 90 days
1.01	DOTD LP Electrocution Prevention WBT	
1.02	DOTD LP Heat Stress WBT	
1.03	DOTD LP Poisonous Plant Safety WBT	
1.04	DOTD LP Safe Driving WBT	
1.05	DOTD STW Work Zone TTC Safety WBT	
1.06	DOTD STW The ABCs of Work Zone Personnel Safety WBT	
1.07	DOTD STW Basic Flagging Procedures	
1.08	DOTD LP Power/Hand Tool Safety WBT	
1.09	DOTD STM Handling Hazardous Chemicals WBT	
2.	Manager Training	Due Date: 52 weeks
2.01	DOTD STM Tort Liability for Maintenance WBT	
2.02	DOTD BP Tort Liability: Depositions and Employee as a Witness WBT	
2.03	DOTD STP English Grammar	
2.04	DOTD STP Math Maintenance	
2.05	DOTD STM Maintenance Activity Guide and Manual Study Guide	
2.06	DOTD STW Traffic Control Through Maintenance Work Area	

DOTD Curriculum – Section 45

DOTD LP Lockout/Tagout WBT - Expires 1 year
DOTD LP Hazardous Materials Annual Refresher - Expires 1 year
DOTD LP Confined Spaces WBT - Expires 3 years
DOTD STW Basic Flagging Refresher WBT - Expires 4 years

DOTD PC Computer Program – Technicians

See main section of Catalog.

TOMS51 - Section 51 - Same training as Bridge Inspectors

Section 51 org units: 50018566, 50400092, 50400097, 50450967, 50459152, 50029131, 50029132, 50029133, 50029442, 50029134, 50590607, 50029135

See training required of Bridge Inspectors.

DOTD PC Computer Program – Technicians

DOTD Curriculum – Bridge Inspectors

DOTD Program - Bridge Inspector 4 and up



Maintenance Trades

Jobs are located in all districts and may be in Sections 42-45-51.

Equipment Operator requirements are assigned on an individual basis. See EOCP Section.

Job Code	Job Title	S U P	Program Trades Safety	Curric Trades By Loc	Program Maint Math	Program Maint Electr	Program Trades Super	Program Welder Certs
128700	CARPENTER		X	X	X			
128740	CARPENTER MASTER		X	X	X			
128710	CARPENTER FOREMAN	1	X	X	X		X	
128770	ELECTRICIAN		X	X	X	X		
155150	ELECTRICIAN SPECIALIST		X	X	X	X		
155140	ELECTRICIAN SPEC LEADER		X	X	X	X		
155130	ELECTRICIAN SPEC FOREMAN	1	X	X	X	X	X	
132990	ELECTRONIC TECH TRAINEE		X	X	X	X		
131740	ELECTRONIC TECH		X	X	X	X		
156750	ELECTRONIC TECH ADV		X	X	X	X		
131750	ELECTRONIC TECH SUPV	1	X	X	X	X	X	
131930	GUARD		X	X				
128650	MAINTENANCE REPAIRER 1		X	X	X			
128640	MAINTENANCE REPAIRER 2		X	X	X			
128630	MAINTENANCE REP MASTER		X	X	X			
129230	MAINTENANCE FOREMAN	1	X	X	X		X	
172300	MAINTENANCE SUPERINTEND	1	X	X	X		X	
130200	PAINTER		X	X				
130210	PAINTER MASTER		X	X	X			
129450	PAINTER FOREMAN	1	X	X	X		X	
129500	PLUMBER/PIPEFITTER		X	X	X			
146330	PLUMBER/PIPEFIT MASTER		X	X	X			
129830	WELDER		X	X	X			X
129850	WELDER MASTER		X	X	X			X
129840	WELDER FOREMAN	1	X	X	X		X	X
129810	TRADE APPRENTICE		X	X				

DOTD Program - Maintenance Trades Safety

Due Date: 90 days

1.	Safety Training
1.01	DOTD LP Electrocution Prevention WBT
1.02	DOTD LP Heat Stress WBT
1.03	DOTD LP Poisonous Plant Safety WBT
1.04	DOTD LP Safe Driving WBT
1.05	DOTD LP Asbestos Awareness WBT
1.06	DOTD LP Power/Hand Tool Safety WBT



Maintenance Trades (continued) Programs and Curricula

DOTD Program - Maintenance Math

Due Date: 2 years

1.	Required Courses
1.01	DOTD STP Math Maintenance

DOTD Program - Maintenance Electricity

Due Date: 2 years

1.	Required Courses
1.01	DOTD STM Electrical 201 - Basic Electricity
1.02	DOTD STM Electrical 205 - Electrical Safety and Protection

DOTD Program - Maintenance Trades Supervisors

Due Date: 1 year

1.	Required Courses
1.01	DOTD STM Maintenance Activity Guide and Manual Study Guide
1.02	DOTD STM Tort Liability for Maintenance
1.03	DOTD BP Tort Liability: Depositions and Employee as a Witness WBT
1.04	DOTD STP English Grammar

DOTD Program - Welder Certifications

Due Date: 2 years

1.	Welding Certifications
1.01	DOTD-CRED Welding Certificate 1G
1.02	DOTD-CRED Welding Certificate 2G
1.03	DOTD-CRED Welding Certificate 3G
1.04	DOTD-CRED Welding Certificate 4G

—— LOCATION DEPENDENT ——

DOTD Curriculum – Trades

(all except those in Section 45 below)

DOTD LP Hazardous Materials Annual Refresher - Expires 1 year
DOTD LP Lockout/Tagout WBT - Expires 1 year
DOTD LP Confined Spaces WBT - Expires 3 years

DOTD Curriculum - Trades - Section 45

Section 45, Units 7xx – 50399455, 50020493, 50020493, 50399456, 50020494, 50399457, 50399458, 50020490, 50400091, 50399459, 50399460, 50399461, 50399462, 50399463, 50399464, 50399465, 50399466

DOTD STW Basic Flagging
DOTD STW Traffic Control Through Maintenance Work Area
DOTD STM Handling Hazardous Chemicals WBT
DOTD LP Lockout/Tagout WBT - Expires 1 year
DOTD LP Confined Spaces WBT - Expires 3 years
DOTD STW Basic Flagging Refresher WBT - Expires 4 years



Sheet Metal Workers

Jobs are located in Section 45.

Job Code	Job Title	S U P	Program Sheet Metal Safety	Program Sheet Metal Workers
129740	SHEET METAL WORKER		X	X
146840	SHEET METAL MASTER		X	X
129730	SHEET METAL FOREMAN	1	X	X

DOTD Program - Sheet Metal Workers

1.	Safety Training	Due Date: 13 weeks
1.01	DOTD LP Electrocutation Prevention WBT	
1.02	DOTD LP Heat Stress WBT	
1.03	DOTD STS Safe Driving WBT	
1.04	DOTD STS Power/Hand Tool Safety WBT	
1.05	DOTD STW The ABCs of Work Zone Personnel Safety WBT	
1.06	DOTD STW Work Zone TTC Safety WBT	
2.	Required Courses	Due Date: 91 weeks
2.01	DOTD STP Math Maintenance	
2.02	DOTD STP English Grammar	
2.03	DOTD STM Tort Liability for Maintenance WBT	
2.04	DOTD BP Tort Liability: Depositions and Employee as a Witness WBT	

Assign EOCP requirements if workers operate a Fork Lift.



Equipment Inspectors and Superintendents

EQUIPM Jobs are located in all Districts and in Section 42.

Equipment Operator requirements are assigned on an individual basis. See EOCP Section.

Job Code	Job Title	S U P	Program Eq Insp	Curriculum Job EQUIPM
128800	EQUIPMENT INSPECTOR		X	X
128810	EQUIP SUPERINTENDENT	2	X	X

DOTD Program - Equipment Inspector and Superintendent

1.	Safety Training	Due Date: 13 weeks
1.01	DOTD STS Electrocution Prevention WBT	
1.02	DOTD STS Heat Stress WBT	
1.03	DOTD STS Poisonous Plant Safety WBT	
1.04	DOTD STS Safe Driving WBT	
1.05	DOTD STS Power/Hand Tool Safety WBT	
1.06	DOTD STW The ABCs of Work Zone Personnel Safety WBT	
1.07	DOTD STW Work Zone TTC Safety WBT	
1.08	DOTD STW Basic Flagging Procedures	
2.	Required Courses	Due Date: 91 weeks
2.01	DOTD STP Math Maintenance	

DOTD Curriculum – Equipment Inspectors and Superintendent

DOTD LP Hazardous Materials Annual Refresher - Expires 1 year
DOTD LP Lockout/Tagout WBT - Expires 1 year
DOTD LP Confined Spaces WBT - Expires 3 years



Mechanics

MECHAN Jobs are located in all districts and in Section 42. (071 units)

Equipment Operator requirements are assigned on an individual basis. See EOCP Section.

Job Code	Job Title	S U P	Program Mechanic Safety	Curriculum Job MECHAN
103360	MECHANIC 1		X	X
103390	MECHANIC 2		X	X
103370	MECHANIC 3		X	X
103380	MECHANIC 4		X	X
103400	MECHANIC SUPERVISOR A	1	X	X
103410	MECHANIC SUPERVISOR B	1	X	X
103420	MECHANIC-BODY REPAIRER 1		X	X
103430	MECHANIC-BODY REPAIRER 2		X	X

Mechanics on Ferries, 42-072, follow the programs and curricula for Ferryboat

DOTD Program - Mechanics

Due Date: 90 days

1.	Safety Training
1.01	DOTD LP Electrocution Prevention WBT
1.02	DOTD LP Heat Stress WBT
1.03	DOTD LP Safe Driving WBT
1.04	DOTD LP Asbestos Awareness WBT
1.05	DOTD LP Power/Hand Tool Safety WBT
1.06	DOTD STW The ABCs of Work Zone Personnel Safety WBT
1.07	DOTD STW Work Zone TTC Safety WBT

DOTD Curriculum - Mechanics

DOTD LP Lockout/Tagout WBT - Expires 1 year
DOTD LP Hazardous Materials Annual Refresher - Expires 1 year



Bridge Inspectors

Bridge Inspector jobs are located in the Districts in units 051 and in Section 51, unit 002. Section 51 Engineering Technicians and Transportation Ops Managers are in these programs too.

Equipment Operator requirements are assigned on an individual basis. See EOCP Section. Manually assign to Aerial Lift, Bucket Truck and Bridge Inspection Truck.

Job Code	Job Title	S U P	DOTD PC Program	Curriculum Bridge Insp	Program BRINSP Job
173760	BRIDGE INSPECTOR 1 and Section 51 ENGR TECH 1		X	X	1
173770	BRIDGE INSPECTOR 2 and Section 51 ENGR TECH 2		X	X	2
173780	BRIDGE INSPECTOR 3 and Section 51 ENGR TECH 3		X	X	3
173790	BRIDGE INSPECTOR 4 and Section 51 ENGR TECH 4		X	X	4
173800	BRIDGE INSPECTOR 5		X	X	4
	Section 51 TRANS OPS MGR	2	X	X	4

DOTD PC Computer Program – Technicians is assigned. Outlook Level 1 is recommended.

The following course is recommended when available: DOTD RS 13 Inspection of Local Bridges

DOTD Curriculum – Bridge Inspectors

DOTD LP Confined Spaces WBT - Expires 3 years
DOTD LP Lockout/Tagout WBT - Expires 1 year
DOTD STW Basic Flagging Refresher WBT - Expires 4 years
DOTD LP Boating Safety Refresher - Expires 3 years
DOTD NHI 130053 Bridge Inspection Refresher Training - Expires 5 years

DOTD Program - Bridge Inspector 1

1.	Safety Training	Due Date: 13 weeks
1.01	DOTD LP Electrocution Prevention WBT	
1.02	DOTD LP Heat Stress WBT	
1.03	DOTD LP Poisonous Plant Safety WBT	
1.04	DOTD LP Scaffolding Safety WBT	
1.05	DOTD LP Power/Hand Tool Safety WBT	
1.06	DOTD STW The ABCs of Work Zone Personnel Safety WBT	
1.07	DOTD STW Work Zone TTC Safety WBT	
1.08	DOTD STW Basic Flagging Procedures	
1.09	DOTD LP Safe Driving WBT	

DOTD Training Requirements Catalog



2.	Fundamental Training	Due Date: 39 weeks
2.01	DOTD LP Boating Safety Course WBT-External	
2.02	DOTD STP Standard Specifications	
2.03	DOTD STP Math Construction Part 1	
2.04	DOTD STEq Aerial Lift Safety WBT	
2.05	DOTD STEq Bucket Truck Safety WBT	
3.	Bridge Inspector 1	Due Date: 52 weeks
3.01	DOTD STP Highway Plan Reading Vol 1	
3.02	DOTD STP Highway Plan Reading Vol 2	
3.03	DOTD STP Math Construction Part 2	

DOTD Program - Bridge Inspector 2

1.	Safety Training	Due Date: 13 weeks
1.01	DOTD LP Electrocution Prevention WBT	
1.02	DOTD LP Heat Stress WBT	
1.03	DOTD LP Poisonous Plant Safety WBT	
1.04	DOTD LP Scaffolding Safety WBT	
1.05	DOTD LP Power/Hand Tool Safety WBT	
1.06	DOTD STW The ABCs of Work Zone Personnel Safety WBT	
1.07	DOTD STW Work Zone TTC Safety WBT	
1.08	DOTD STW Basic Flagging Procedures	
1.09	DOTD LP Safe Driving WBT	
2.	Fundamental Training	Due Date: 39 weeks
2.01	DOTD LP Boating Safety Course WBT-External	
2.02	DOTD STP Standard Specifications	
2.03	DOTD STP Math Construction Part 1	
2.04	DOTD STEq Aerial Lift Safety WBT	
2.05	DOTD STEq Bucket Truck Safety WBT	
3.	Bridge Inspector 1	Due Date: 52 weeks
3.01	DOTD STP Highway Plan Reading Vol 1	
3.02	DOTD STP Highway Plan Reading Vol 2	
3.03	DOTD STP Math Construction Part 2	
4.	Bridge Inspector 2	Due Date: 52 weeks
4.01	DOTD STMR Cleaning/Clearing of Bridges WBT	
4.02	DOTD STM Movable Bridges - Persons Duties - Expires 5 years	
4.03	DOTD NHI 130054 - Engineering Concepts for Bridge Inspectors	
4.04	DOTD NHI 130055 Safety Inspection of In-Service Bridges	
4.05	DOTD STW Traffic Control Through Maintenance Work Area	



DOTD Program - Bridge Inspector 3

1.	Safety Training	Due Date: 13 weeks
1.01	DOTD LP Electrocutation Prevention WBT	
1.02	DOTD LP Heat Stress WBT	
1.03	DOTD LP Poisonous Plant Safety WBT	
1.04	DOTD LP Scaffolding Safety WBT	
1.05	DOTD LP Power/Hand Tool Safety WBT	
1.06	DOTD STW The ABCs of Work Zone Personnel Safety WBT	
1.07	DOTD STW Work Zone TTC Safety WBT	
1.08	DOTD STW Basic Flagging Procedures	
1.09	DOTD LP Safe Driving WBT	
2.	Fundamental Training	Due Date: 39 weeks
2.01	DOTD LP Boating Safety Course WBT-External	
2.02	DOTD STP Standard Specifications	
2.03	DOTD STP Math Construction Part 1	
2.04	DOTD STEq Aerial Lift Safety WBT	
2.05	DOTD STEq Bucket Truck Safety WBT	
3.	Bridge Inspector 1	Due Date: 52 weeks
3.01	DOTD STP Highway Plan Reading Vol 1	
3.02	DOTD STP Highway Plan Reading Vol 2	
3.03	DOTD STP Math Construction Part 2	
4.	Bridge Inspector 2	Due Date: 52 weeks
4.01	DOTD STMR Cleaning/Clearing of Bridges WBT	
4.02	DOTD STM Movable Bridges - Persons Duties - Expires 5 years	
4.03	DOTD NHI 130054 - Engineering Concepts for Bridge Inspectors	
4.04	DOTD NHI 130055 Safety Inspection of In-Service Bridges	
4.05	DOTD STW Traffic Control Through Maintenance Work Area	
5.	Bridge Inspector 3	Due Date: 52 weeks
5.01	DOTD STMR Concrete Bridge Deck Repair WBT	
5.02	DOTD NHI 130078 - Fracture Critical Inspection Techniques for Steel Bridges	
5.03	DOTD STP English Grammar/Writing 1	



DOTD Program - Bridge Inspector 4 and up

1.	Safety Training	Due Date: 13 weeks
1.01	DOTD LP Electrocutation Prevention WBT	
1.02	DOTD LP Heat Stress WBT	
1.03	DOTD LP Poisonous Plant Safety WBT	
1.04	DOTD LP Scaffolding Safety WBT	
1.05	DOTD LP Power/Hand Tool Safety WBT	
1.06	DOTD STW The ABCs of Work Zone Personnel Safety WBT	
1.07	DOTD STW Work Zone TTC Safety WBT	
1.08	DOTD STW Basic Flagging Procedures	
1.09	DOTD LP Safe Driving WBT	
2.	Fundamental Training	Due Date: 39 weeks
2.01	DOTD LP Boating Safety Course WBT-External	
2.02	DOTD STP Standard Specifications	
2.03	DOTD STP Math Construction Part 1	
2.04	DOTD STEq Aerial Lift Safety WBT	
2.05	DOTD STEq Bucket Truck Safety WBT	
3.	Bridge Inspector 1	Due Date: 52 weeks
3.01	DOTD STP Highway Plan Reading Vol 1	
3.02	DOTD STP Highway Plan Reading Vol 2	
3.03	DOTD STP Math Construction Part 2	
4.	Bridge Inspector 2	Due Date: 52 weeks
4.01	DOTD STMR Cleaning/Clearing of Bridges WBT	
4.02	DOTD STM Movable Bridges - Persons Duties - Expires 5 years	
4.03	DOTD NHI 130054 - Engineering Concepts for Bridge Inspectors	
4.04	DOTD NHI 130055 Safety Inspection of In-Service Bridges	
4.05	DOTD STW Traffic Control Through Maintenance Work Area	
5.	Bridge Inspector 3	Due Date: 52 weeks
5.01	DOTD STMR Concrete Bridge Deck Repair WBT	
5.02	DOTD NHI 130078 - Fracture Critical Inspection Techniques for Steel Bridges	
5.03	DOTD STP English Grammar	
5.	Bridge Inspector 4	Due Date: 52 weeks
5.01	DOTD STM Tort Liability for Maintenance	
5.02	DOTD BP Tort Liability: Depositions and Employee as a Witness WBT	
5.03	DOTD STM Maintenance Activity Guide and Manual Study Guide	
5.04	DOTD STM Electrical 201 - Basic Electricity	
5.05	DOTD STM Electrical 205 - Electrical Safety and Protection	



Ferryboat Jobs and Personnel at Plaquemine Fleet Landing

Ferryboat Jobs

Job Code	Job Title	S U P	Program Ferryboat Safety	Program Ferryboat Manager	Curriculum Ferryboat Safety	Curriculum USCG Licensure
174200	FERRYBOAT DECKHAND 1		X		X	
174210	FERRYBOAT DECKHAND 2		X		X	
174220	FERRYBOAT DECKHAND 3		X		X	
174230	FERRYBOAT OPERATOR 1		X			X
174240	FERRYBOAT OPERATOR 2		X			X
174250	FERRYBOAT OPERATOR 3		X			X
174260	FERRYBOAT OPERATOR SENIOR		X			X
174270	FERRYBOAT OPERATION SUPER	1	X			X
174280	FERRYBOAT OPERATION MGR A	2	X	X	X	
174290	FERRYBOAT OPERATION MGR B	2	X	X	X	
Unit 42-072, any job title except Admin Coordinators			X		X	

DOTD Program - Ferryboat Job Safety

Due Date: 90 days

1.	Safety Training
1.01	DOTD LP Electrocution Prevention WBT
1.02	DOTD LP Power/Hand Tool Safety WBT
1.03	DOTD STM Ferries-Personnel Duties
1.04	DOTD LP Boating Safety Course WBT-External

DOTD Program - Ferryboat Managers A and B

Due Date: 2 years

1.	Required Courses
1.01	DOTD STP Math Maintenance
1.02	DOTD STM Tort Liability for Maintenance
1.03	DOTD BP Tort Liability: Depositions and Employee as a Witness WBT
1.04	DOTD STP English Grammar

Curricula – Courses Must Be Repeated When They Expire

DOTD Curriculum - Ferryboat Safety

DOTD Curriculum - Ferryboat USCG Licensure

DOTD LP Lockout/Tagout WBT - Expires 1 year	DOTD LP Lockout/Tagout WBT - Expires 1 year
DOTD LP Confined Spaces WBT - Expires 3 years	DOTD LP Confined Spaces WBT - Expires 3 years
DOTD LP Hazardous Materials Annual Refresher - Expires 1 year	DOTD LP Hazardous Materials Annual Refresher - Expires 1 year
DOTD LP Boating Safety Refresher - Expires 3 years	DOTD-CRED USCG Merchant Mariner Credential - Expires 5 years

For Job titles not requiring Merchant Mariner Credential, but where an employee has the credential, the employee may be manually subscribed to that curriculum instead.



ITS Technicians

Most jobs are located in Section 56. Jobs may also be located in other Operations Sections.

Equipment Operator requirements are assigned on an individual basis. See EOCP Section.

Job Code	Job Title	S U P	Program ITS Tech Safety	Program ITS Tech	Curriculum ITS Tech
173680	ITS TECHNICIAN 1		X	X	X
173690	ITS TECHNICIAN 2		X	X	X
173700	ITS TECHNICIAN 3		X	X	X
173710	ITS TECHNICIAN SPECIALIST		X	X	X
173720	ITS TECHNICIAN SUPERVISOR	1	X	X	X
173730	ITS TECHNICIAN MANAGER	2	X	X	

DOTD Program - ITS Technicians

1.	Safety Training	Due Date: 13 weeks
1.01	DOTD LP Electrocution Prevention WBT	
1.02	DOTD LP Heat Stress WBT	
1.03	DOTD STM Handling Hazardous Chemicals WBT	
1.04	DOTD LP Safe Driving WBT	
1.05	DOTD LP Power/Hand Tool Safety WBT	
1.06	DOTD STW The ABCs of Work Zone Personnel Safety WBT	
1.07	DOTD STW Work Zone TTC Safety WBT	
1.08	DOTD STW Basic Flagging Procedures	
2.	Required Courses	Due Date: 91 weeks
2.01	DOTD STW Traffic Control Through Maintenance Work Area	
2.02	DOTD STP English Grammar	
2.03	DOTD STP Math Maintenance	
2.04	DOTD STM Tort Liability for Maintenance	
2.05	DOTD BP Tort Liability: Depositions and Employee as a Witness WBT	

DOTD Curriculum – ITS Technicians

DOTD LP Lockout/Tagout WBT - Expires 1 year
DOTD STW Basic Flagging Refresher WBT - Expires 4 years

ITS Tech in 51-008 is not required to have the curriculum above.



End

Of

DOTD Training Requirements Catalog